

Charleston Crafted

TRADITIONAL BOOKSHELF WITH MODERN LEGS



PLANS CREATED BY CHARLESTON CRAFTED

FOR MORE INFORMATION ON THIS PLAN VISIT:

WWW.CHARLESTONCRAFTED.COM

INTRODUCTION

Looking to build a simple DIY bookshelf but want to give it a modern twist! This bookshelf is a pretty standard body construction but the legs give it that special element.

The plans are easy to follow, but please contact Sean@CharlestonCrafted.com if you have any questions! If you'd like to see our version live in action, check out our blog post at www.charlestoncrafted.com

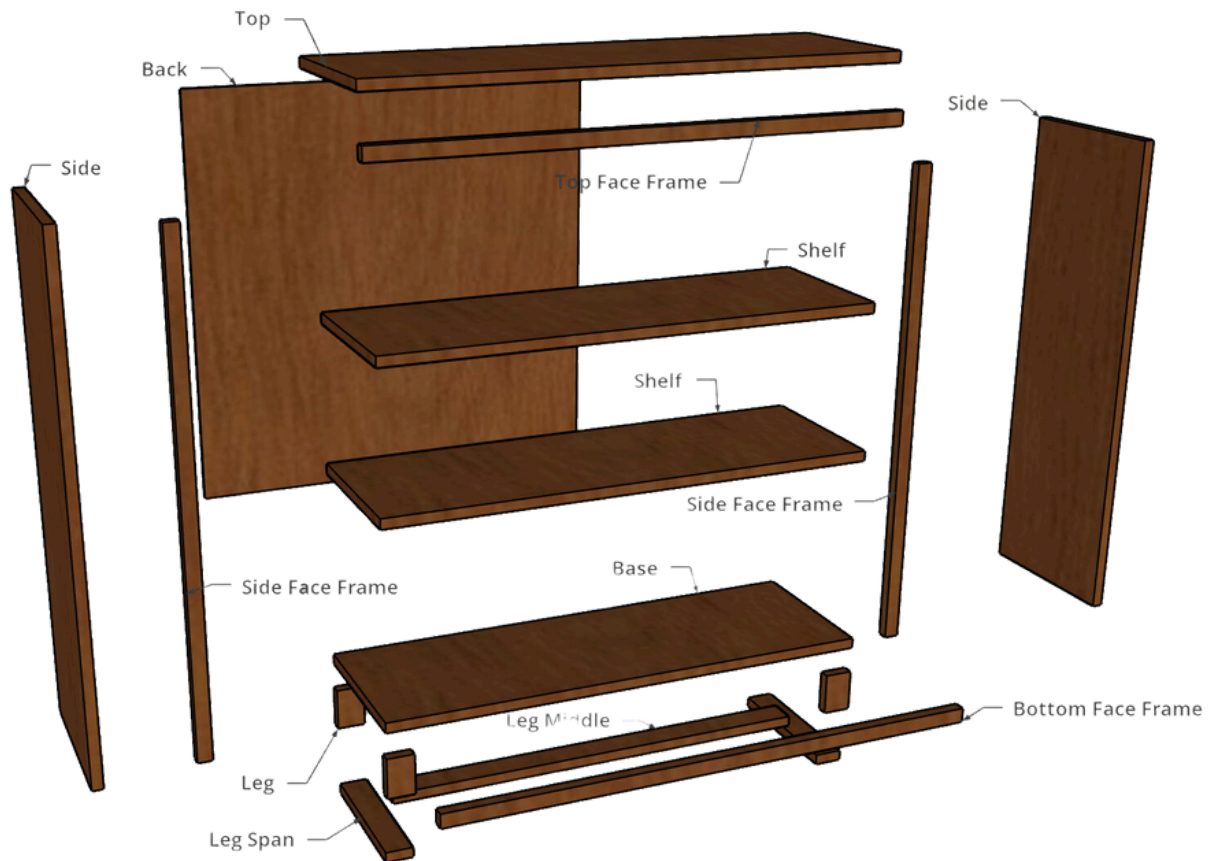
SUPPLY LIST

- (1) 4' x 8' x 3/4" plywood
- (1) 4' x 8' x 1/4" plywood
- (1) 3/4" x 3 1/2" x 8' (common 1x4s)
- 1 1/4" Kreg pocket hole screws
- Wood glue
- Stain or paint
- 5mm Shelf Pins

CUT LIST

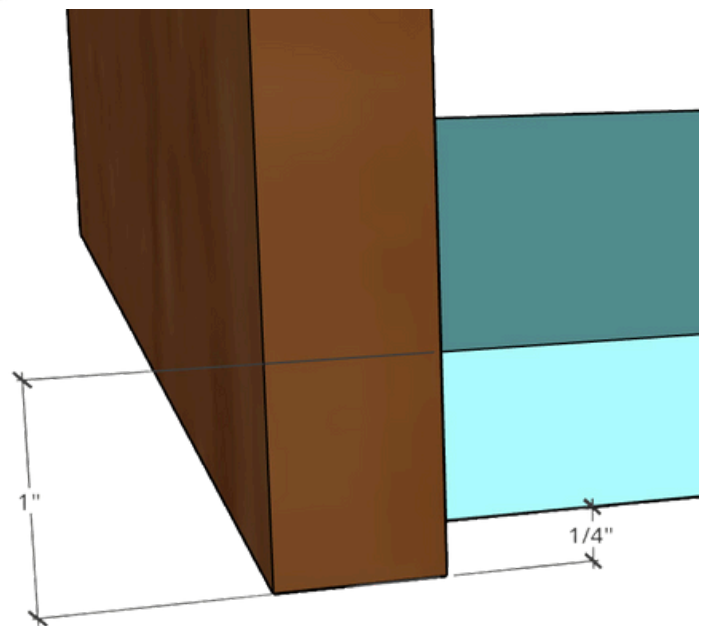
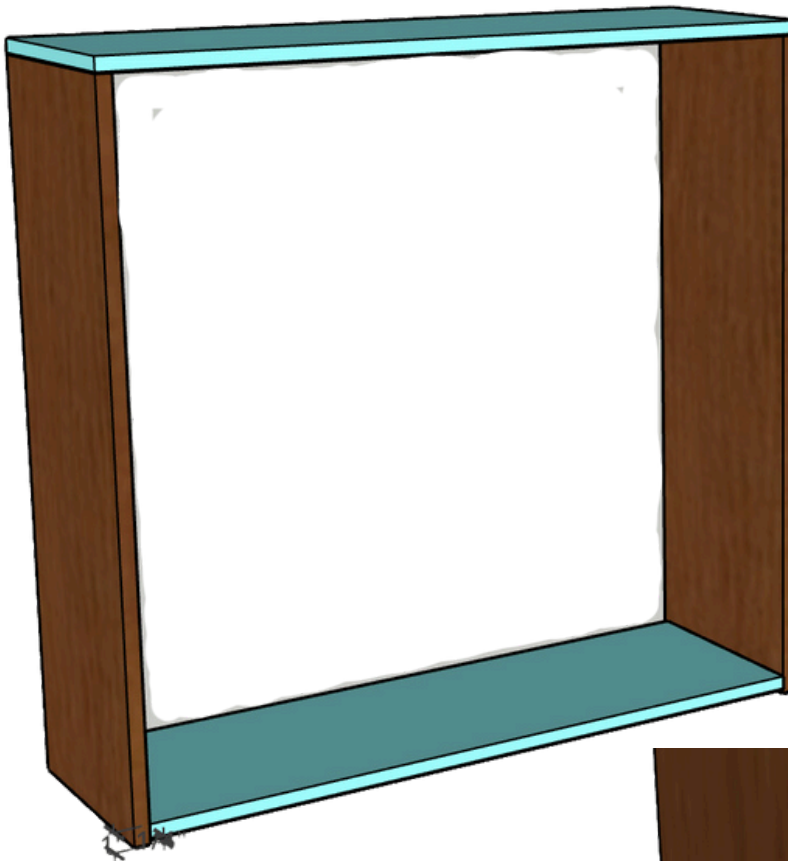
- Plywood
 - (1) Top- 37 1/2" x 12" x 3/4"
 - (1) Base- 36" x 11 3/4" x 3/4"
 - (2) Shelves- 36" x 11 3/4" x 3/4"
 - (2) Sides- 36" x 12" x 3/4"
 - (4) Legs- 3" x 2" x 3/4"
 - (2) Leg Spans- 10 1/2" x 2" x 3/4"
 - (1) Leg Middle- 32" x 2" x 3/4"
 - (1) Back- 36 3/8" x 36" x 1/4"
- Board
 - (2) Top/Bottom Face- 37 1/2" x 1" x 3/4"
 - (2) Side Face- 34 3/4" x 1" x 3/4"

EXPLODED VIEW



STEP ONE- BUILD FRAME

- Drill three pocket holes on one end of each Side.
- Drill three pocket holes on both ends of the Base.
- Using wood glue and pocket hole screws, attach the two Sides into the bottom of the Top on the ends.
- Using wood glue and pocket hole screws, attach the Base between the two sides so that it is 1/4" up from the bottom.



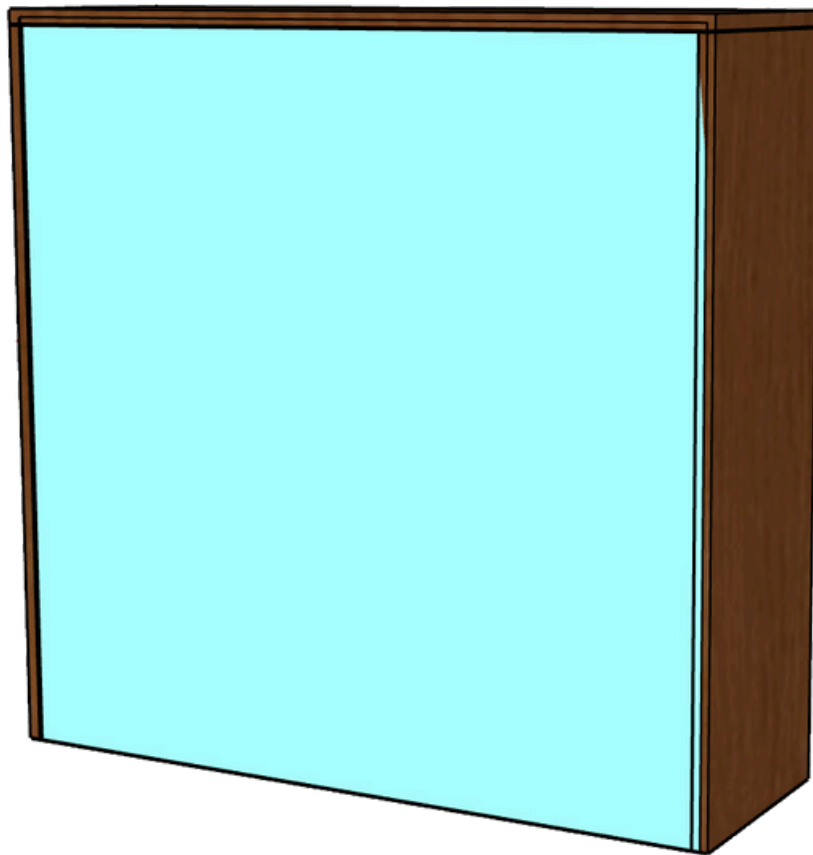
STEP TWO- DRILL SHELF PIN HOLES

- Using a shelf pin jig, drill shelf pin holes up and down the front and back of both of the Sides.



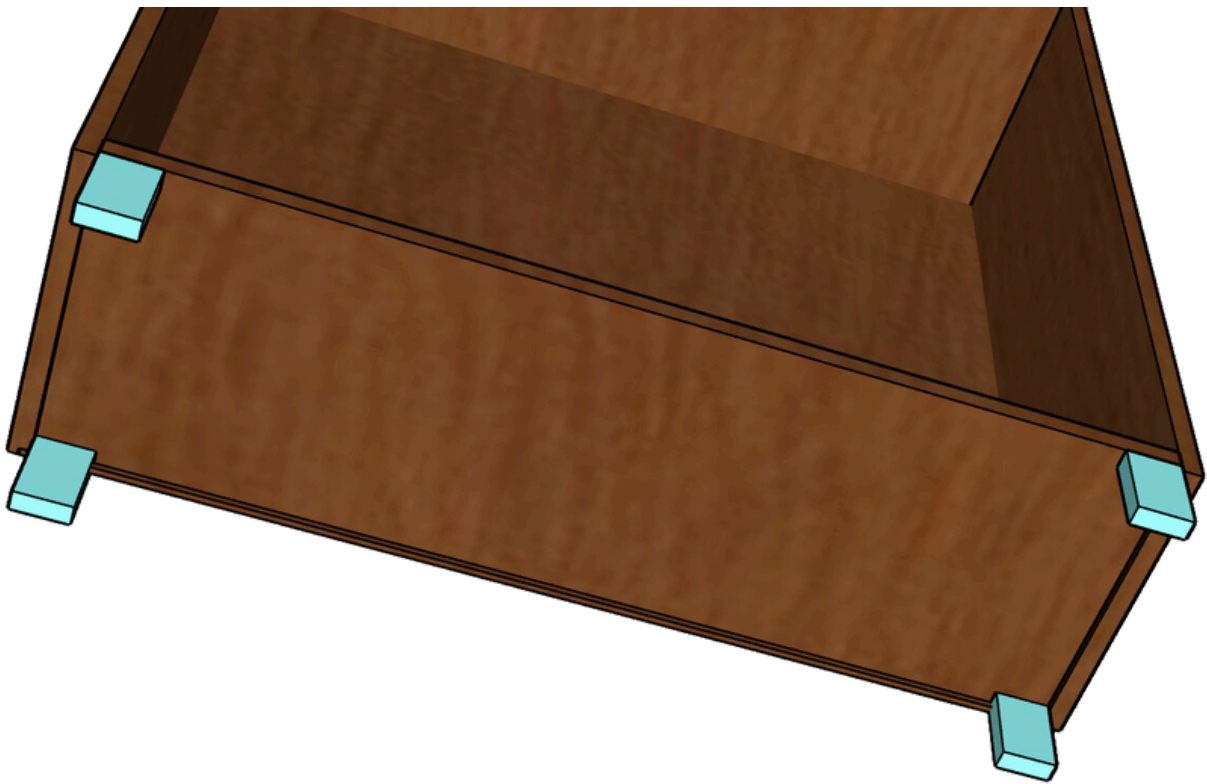
STEP THREE- ATTACH BACK

- If you want the Back to be inset and not visible from the sides and top, use a router to carve out a 1/4" deep groove around the inner back side of the frame.
 - If you don't have a router or don't care if the Back is visible, you can skip this.
- Using wood glue and 1" nails, attach the Back into the frame.



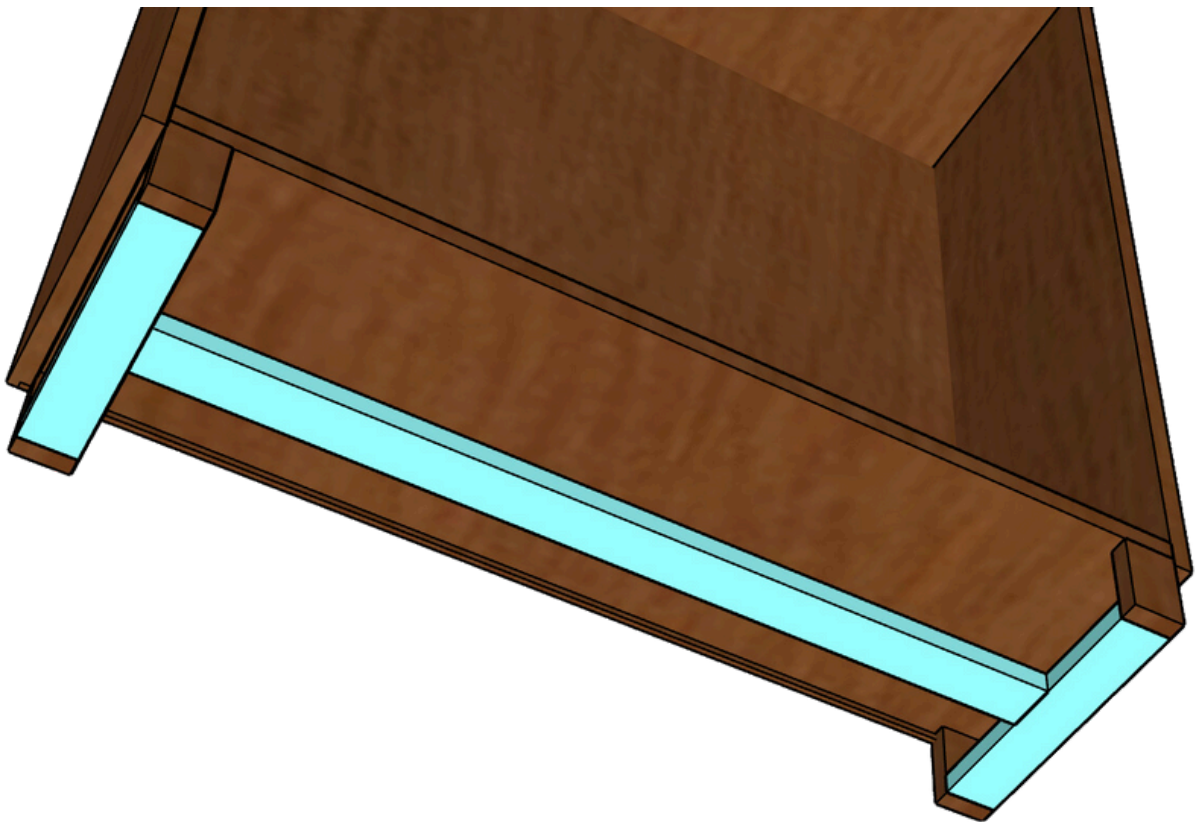
STEP FOUR- ATTACH LEGS

- Drill two pocket holes in one end of each Leg.
- Using wood glue and pocket hole screws, attach the Legs into each corner of the Base, making sure the pocket holes face the back.



STEP FIVE- ADD LEG SUPPORTS

- Drill two pocket holes in each end of the Leg Spans and the Leg Middle.
- Using wood glue and pocket hole screws, attach the Leg Spans between the front and back Legs on each side, flush against the bottom of the Legs.
- Using wood glue and pocket hole screws, attach the Leg Middle centered between the two Leg Spans.



STEP SIX- ATTACH FACE FRAME

- Using wood glue and nails, attach the Top Face flush along the front edge of the Top and Sides.
- Using wood glue and nails, attach the Side Faces flush along the outside edge of the Sides. There will be a little overhang into the bookshelf.
- Using wood glue and nails, attach the Bottom Face flush along the front edge of the Bottom and Sides.



STEP SEVEN- STAIN OR PAINT

- Add whatever stain or paint you want for your aesthetic. Apply to the body and the shelves that haven't been installed.
- Add a coat of polyurethane to help protect the shelves from wear and tear.

STEP EIGHT- INSTALL SHELVES

- Select your desired height for your shelves and insert four shelf pins at level height in each corner.
- Inserting at a slight angle, slide each Shelf into place on top of the shelf pins.



FINAL STEP- ENJOY!

- Enjoy your handiwork and tag @CharlestonCrafted on Instagram with a picture!

Charleston
Crafted

These plans are for personal use only and are meant to serve as a guide to build. Sean and Morgan McBride and The Charleston Crafted Blog LLC do not assume any responsibility or liability arising from the misuse of these plans or injuries that occur during the construction or use of your product.