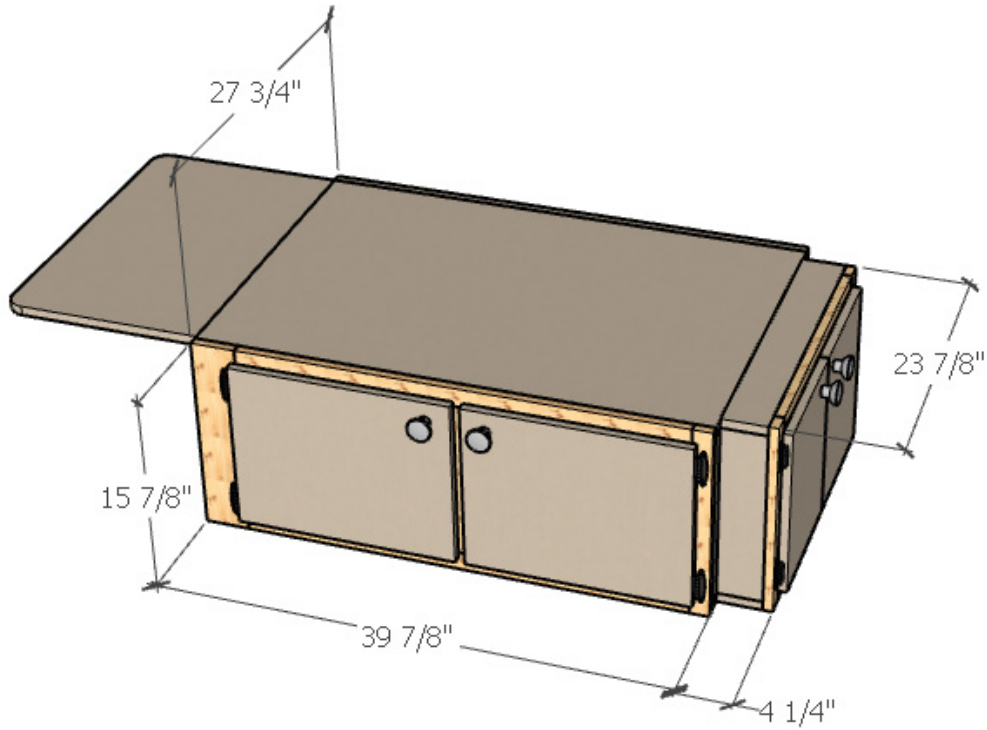




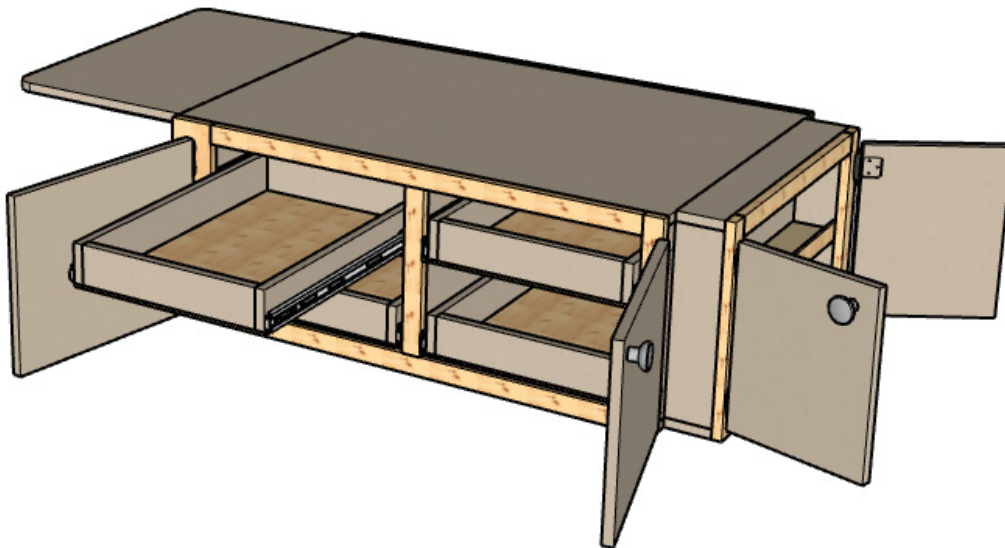
## ADD STORAGE TO YOUR KREG WORKBENCH

By **George Vondriska**

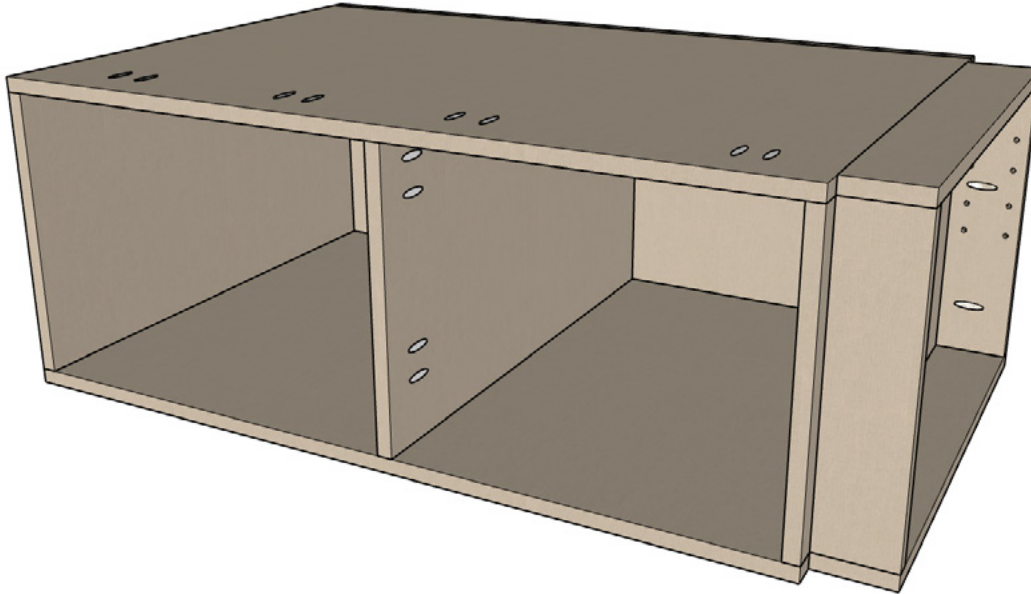
Steel-framed workbenches, like this Universal Bench from Kreg, are great, versatile additions to a shop. The empty space under the bench screams for the addition of a storage cabinet. Here's how you can add a cabinet to your bench.



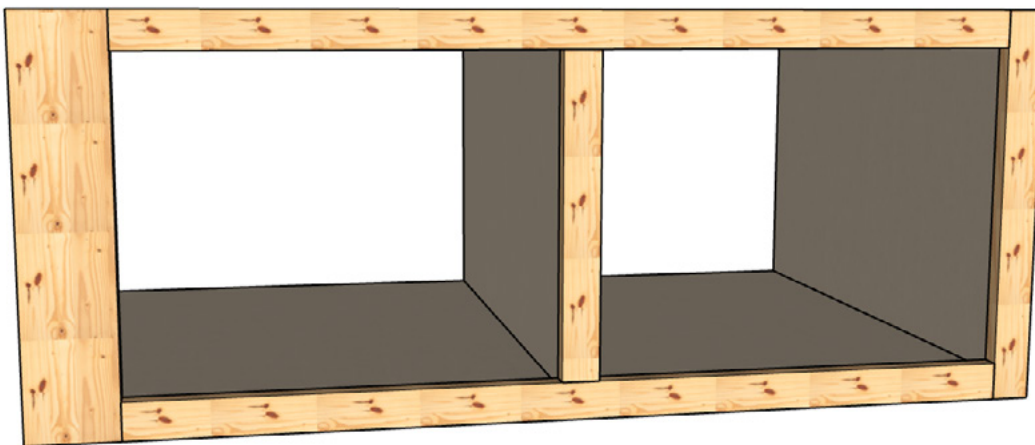
This cabinet was specifically designed for Kreg's 32" x 48" Universal Bench. Check and adapt the dimensions if you're using these plans for a different workbench.



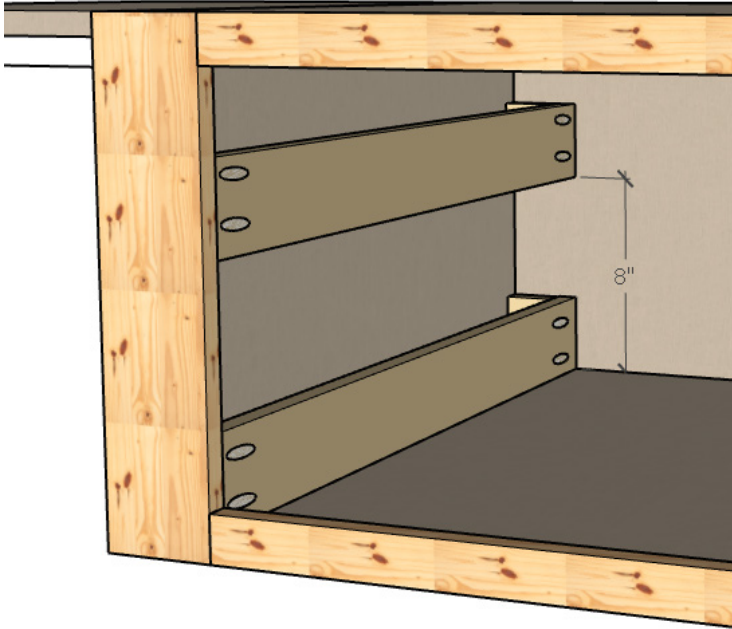
The cabinet case is made from 3/4" MDF and can be built from two 4' x 8' sheets. The face frames are pine. The trays travel on 24" full extension drawer slides. Overlay doors protect the inside of the cabinet from dust, and a flip up shelf gives you extra real estate for working on your projects.



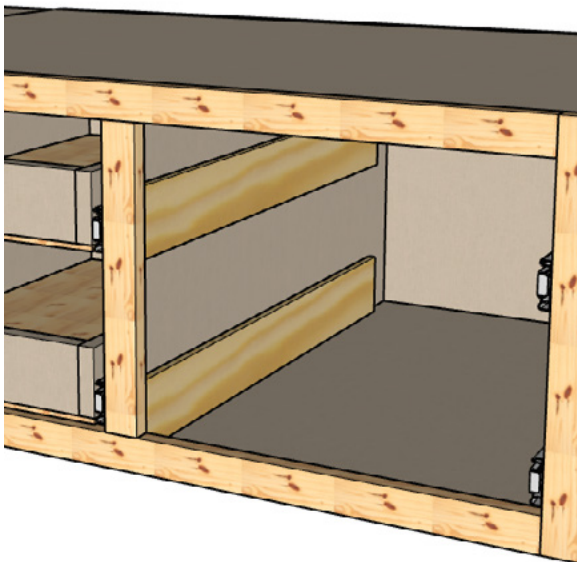
The MDF case is held together with simple butt joints. Glue, brad and screw the joints together using #8 x 1-1/2" wood screws. Predrill before driving the screws. Note the pocket holes used to attach the face frame and attach the end cabinet to the main cabinet. There's another set of double pocket holes on the bottom face of the cabinet bottom.



Note the width difference between the left and right face frame stiles. A portion of the left stile "hides" behind the leg of the workbench after the cabinet is installed. The stile is oversized so the stiles you can see left and right look the same after installation.

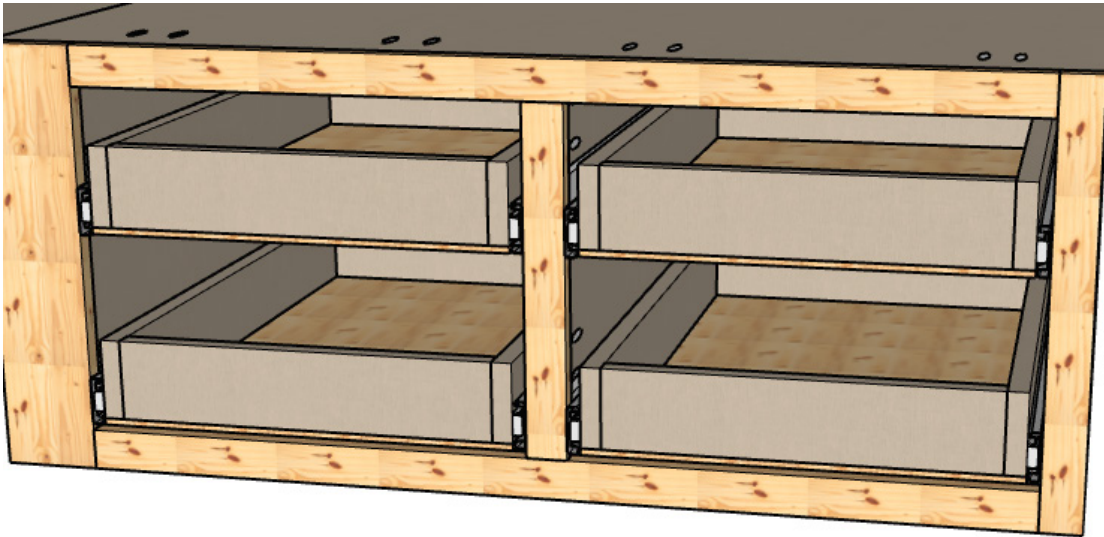


Use pocket holes, screws and glue to fasten the Drawer Slide Rails and their spacers to the back and the face frame.

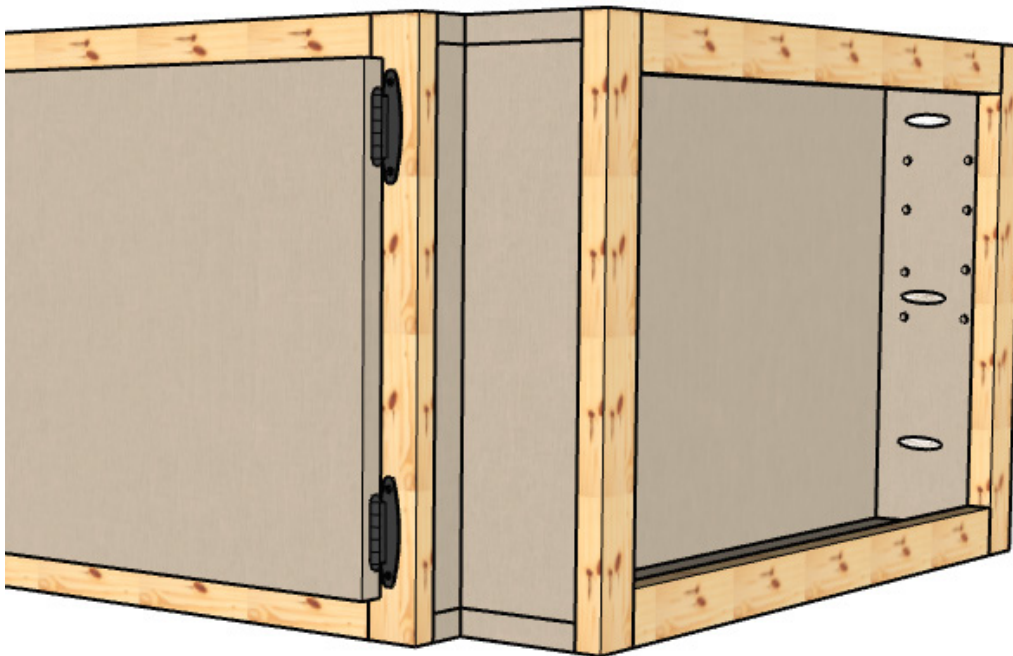


Plane the Drawer Slide Spacers to fit, matching the distance from the edge of the stile to the face of the midwall or side.





Carefully dimension the tray fronts and backs to make sure the trays will fit. Side mount slides typically require 1" of space. It's OK for the trays to be slightly (1/16") undersize, but they won't work if they're too big. The formula to calculate the fronts and backs is  $\text{Width of opening} - \text{Width of two drawer slides} - \text{Thickness of two tray sides} - 1/16"$ . Measure carefully.

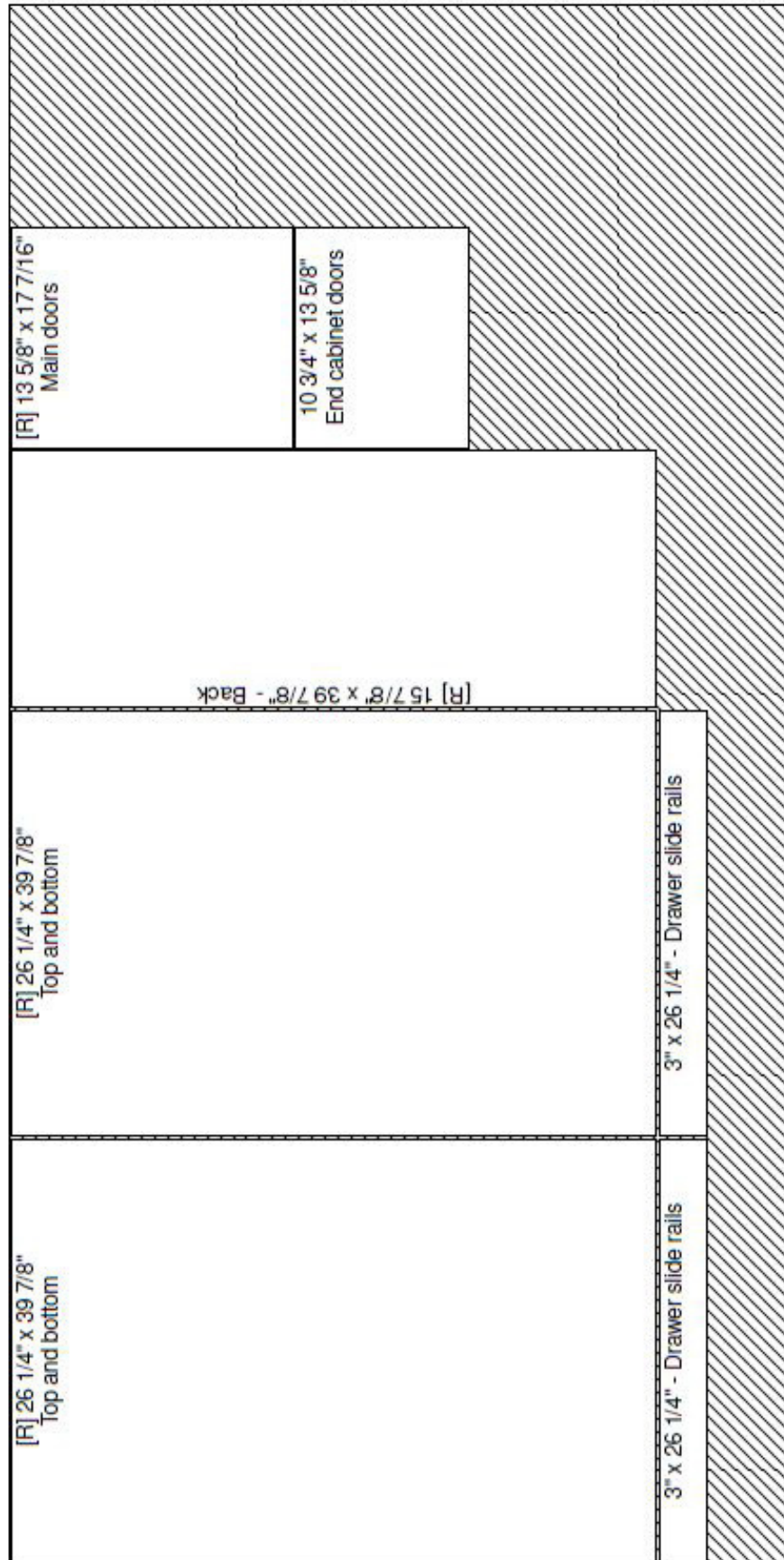


Use pocket holes and 1-1/4" screws to fasten the end cabinet to the main cabinet.

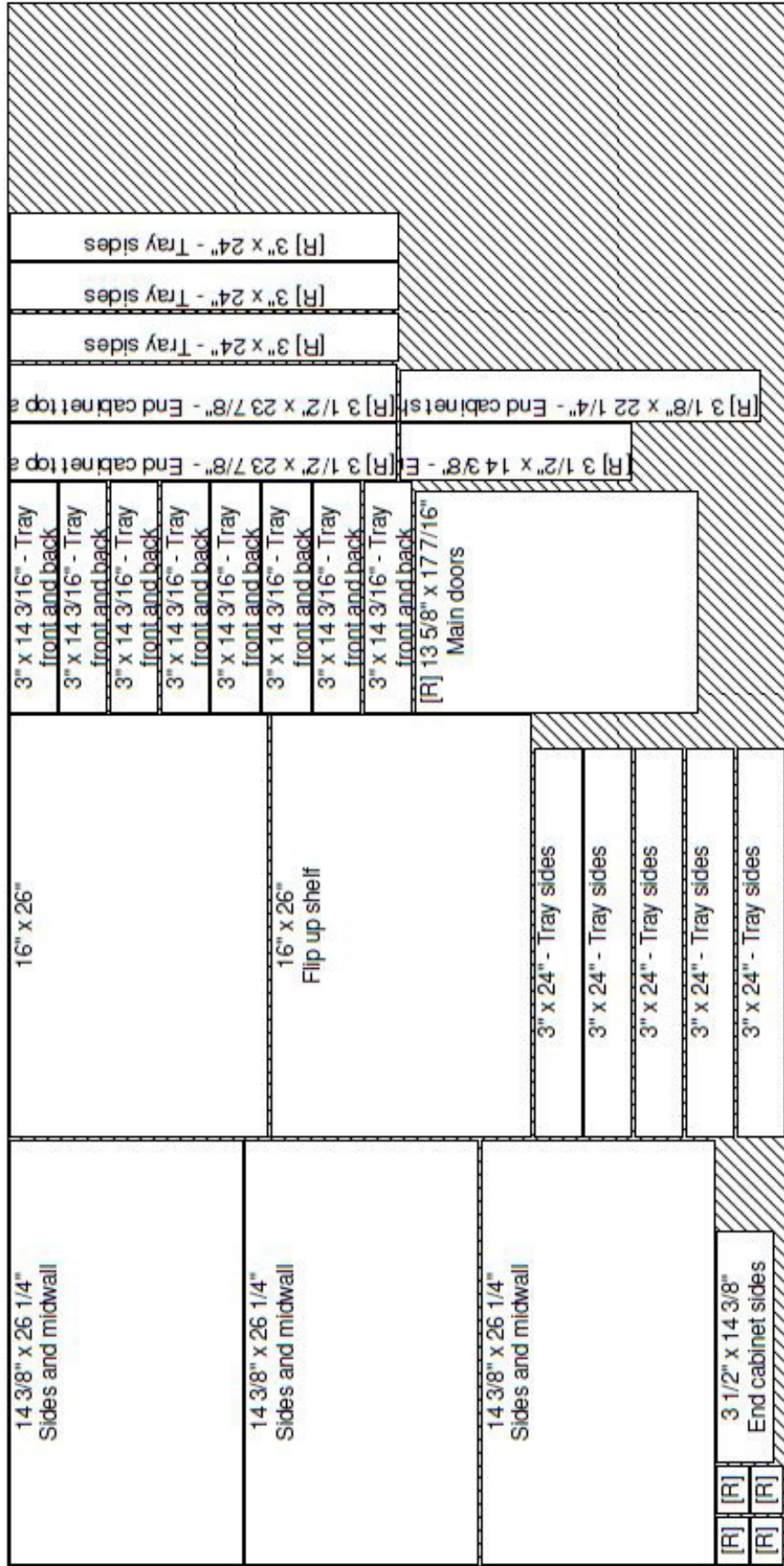
## Kreg Workbench Cabinet Cutlist

Note: Confirm all part sizes before cutting to make sure they work with your workbench.

Quant	Part	Size	Material	Notes
3	Sides and midwall	¾" x 14-3/8" x 26-1/4"	MDF	Midwall gets pocket holes for face frame
2	Top and bottom	¾" x 26-1/4" x 39-7/8"	MDF	Pocket holes for face frame
1	Back	¾" x 15-7/8" x 39-7/8"	MDF	
2	FF rails	¾" x 1-1/2" x 34-7/8"	Pine	Pocket holes in both ends
1	FF stile	¾" x 1-1/2" x 15-7/8"	Pine	
1	FF stile	¾" x 3-1/2" x 15-7/8"	Pine	
1	FF center stile	¾" x 1-1/2" x 12-7/8"	Pine	Pocket holes both ends
2	Drawer slide rails-wide stile	¾" x 3" x 26-1/4"	MDF	Pocket holes both end
4	Slide rail spacers	¾" x 3" x 2"	MDF	
4	Drawer slide spacers-midwall	3/8" x 3" x 24"	Pine	Plane to fit
2	Drawer slide spacers-narrow stile	¾" x 3" x 24"	Pine	Plane to fit
2	Main doors	¾" x 13-5/8" x 17-7/16"	MDF	Cut to fit for 3/8" overlay. ¼" roundover 4 edges
8	Tray front and back	¾" x 3" x 14-3/16"	MDF	Cut to fit
8	Tray sides	¾" x 3" x 14"	MDF	
4	Tray bottoms	¼" x 15-11/16" x 24"	Plywood	Cut to fit
2	End cabinet sides	¾" x 3-1/2" x 14-3/8"	MDF	Adjustable shelf holes and pocket holes
2	End cabinet top and bottom	¾" x 3-1/2" x 23-7/8"	MDF	
2	End cabinet FF stiles	¾" x 1-1/2" x 15-7/8"	Pine	
2	End cabinet FF rails	¾" x 1-1/2" x 22-3/8"	Pine	Pocket holes both ends
2	End cabinet doors	¾" x 10-3/4" x 13-5/8"	MDF	3/8" overlay on three edges, 3/32" gap between the doors. ¼" roundover 4 edges
1	End cabinet shelf	¾" x 3-1/8" x 22-1/4"	MDF	
1	End cabinet shelf nose	¼" x 1-1/2" x 22-1/4"		
1	Flip up shelf	¾" x 16" x 26"	MDF	¼" round over 3 edges
4	Full extension drawer slides	24"		
4	Pairs hinges			
1	Pair flip up shelf hardware			









# SOURCES

[Kreg Universal Workbench](#)

[Kreg Adaptive Cutting System](#)

[Kreg Track Saw](#)

[Pocket Hole Jig](#)

[Kreg Drawer Slide Installation Jig](#)

[Kreg Adjustable Shelf Jig](#)

[Clamp to attach face frame to case](#)

[Drawer Slides](#)

[Hinges](#)

[Flip Up Shelf Hardware](#)

[Drill/countersink for screws](#)

[Part holder to aid in assembly](#)

[Glue scraper](#)

# NOTES

All the pine required for this project will come from two 1x6x8' boards.

The pencil and brush holders are made from PVC pipe with an outside diameter of 1-1/2".

