



Firewood Storage Rack

Prepared by: Viktor Sarudi
The Stump Shop



Cut List

- 1- ¾" plywood cut to 4' x 18" (bottom Shelf)
- 1- ¾" plywood cut to 4' x 22" (roof)
- 4- 2x4's cut to 3" (legs)
- 2- 2x4's cut at 40" . One end of each piece cut at a 7-degree angle (rear posts)
- 2- 2x4's cut at 38 ¼". One end of each piece cut at a 7-degree angle (front posts)
- 4- 2x4's cut at 11" (side support braces)
- 2- 2x4's cut at 45" (rear support braces)

Supplies List

Roofing Material (enough for approx. 10sq ft.)

- either roofing shingles or other roofing substitute like roofing panels, metal roofing, etc.)
- roofing nails
- roofing underlayment (enough for approx. 10sq ft.)

Outdoor Wood Glue

Outdoor Kreg Pocket Hole Screws

Sandpaper (150 grit)

Optional: Outdoor weatherproof spray finish or stain (Depends on wood used and environment)

Step One

Using the Kreg Adaptive Cutting System Plunge-Cut Track Saw Cut your plywood into

One 4' x 18' piece and

One 4' x 22" piece

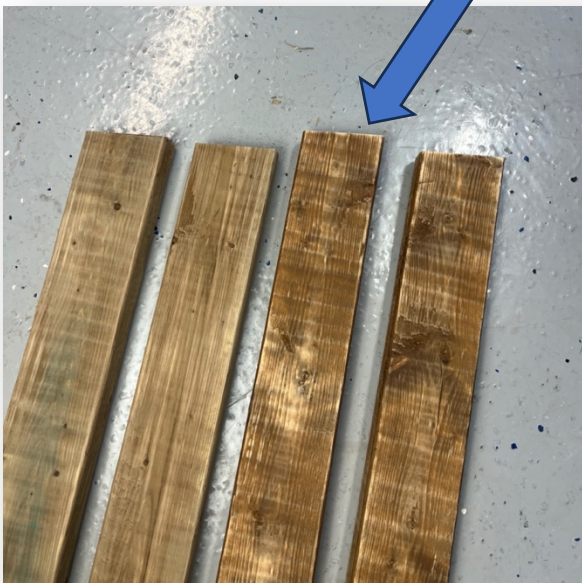


*These are the bottom and the roof sheets. The larger one is the roof to provide an overhang for water to drip away from the wood pile.

Step Two

- Cut two 2x4's into 40" pieces. One end must be cut at 7-degrees angle.
- Cut two 2x4's into 38 1/4" pieces. One end must be cut at a 7-degrees angle.

One end of each piece cut at a 7-degree angle to allow for roof slant.



Step Three

Cut five 2x4's at 3" lengths for feet and attach to the four corners and one in the middle. Use wood glue and screws.



OPTIONAL for airflow & drainage

Screw $\frac{1}{4}$ " holes on floor piece at 5" intervals to allow for air flow and drainage should water get into wood pile.

Step Four

Following the directions on the Kreg Pocket-hole Jig 720PRO (Or other Kreg Pocket-hole jigs), drill pocket holes for screws on the ends of each 2x4 post.

Attach to base with the longer pieces as rear posts and the 7-degree angled pieces forward.



Step Five

Using pocket hole screws, attach the roof with the overhang to the front.



Using pocket hole screws, insert support 2x4's in the sides and at the rear.
Install at 3" height and at 15" height.

Step Six

Optional prior to adding roof:

-Spray/stain or paint structure depending on outdoor climates in your area.

Attach roofing material of your choice according to the instructions. I used roofing shingles to ensure that water drips away from the wood.



Project Complete

Fill with wood and enjoy.



By Viktor Sarudi
Exclusively for www.kregtool.com