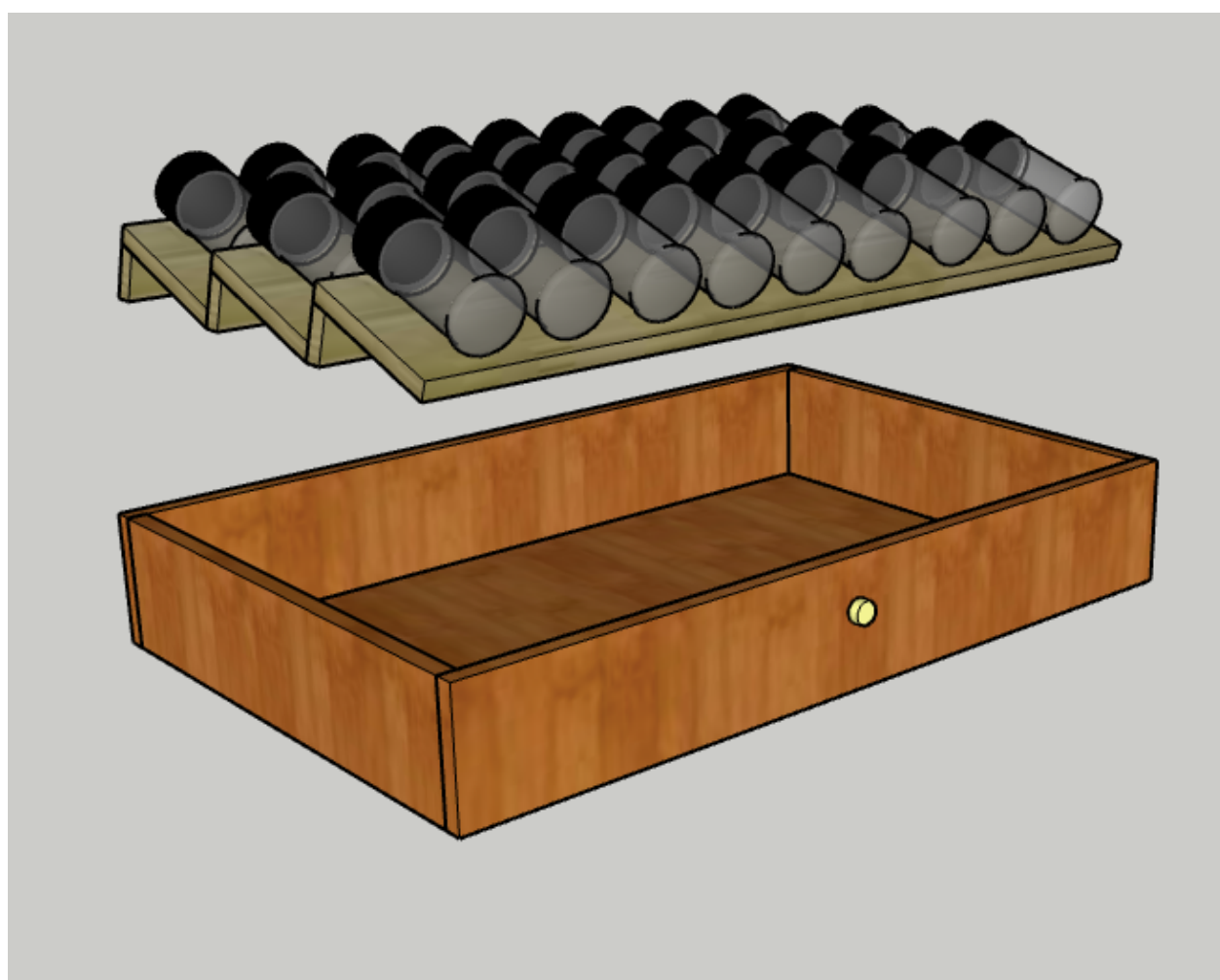


# Charleston Crafted

## DIY SPICE DRAWER ORGANIZER



---

**PLANS CREATED BY CHARLESTON CRAFTED**

FOR MORE INFORMATION ON THIS PLAN VISIT:  
[WWW.CHARLESTONCRAFTED.COM](http://WWW.CHARLESTONCRAFTED.COM)

## INTRODUCTION

Do you have an absolutely dreadful looking spice drawer in your kitchen? Build this simple and extremely functional spice drawer organizer that will keep your spices organized and looking great!

The plans are easy to follow, but please contact [Sean@CharlestonCrafted.com](mailto:Sean@CharlestonCrafted.com) if you have any questions! If you'd like to see our version live in action, check out our blog post at [www.charlestoncrafted.com](http://www.charlestoncrafted.com)

## SUPPLY LIST

- (1) 2' x 4' x 1/2" plywood
- [Wood glue](#)
- [1" pocket hole screws](#)
- [Glass spice jars](#)

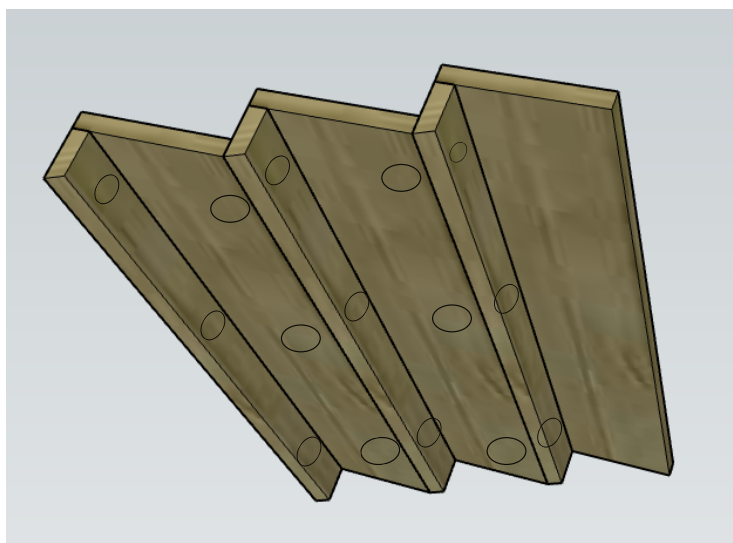
## CUT LIST

- (3) Shelf Backs- 21 3/4" x 4 1/4" x 1/2"
- (3) Shelf Risers- 21 3/4" x 1 1/2" x 1/2"
  - Cut the Shelf Risers with a 19.5 degree bevel on one long edge

\*\*note- these measurements fit our drawer. Measure the inside of your drawer and change the 21 3/4" length to fit your drawer exactly. Also, this is based on a 3 1/2" tall drawer. If your drawer interior differs in height, you may need to adjust the height of your Shelf Risers.

## POCKET HOLE PLACEMENT:

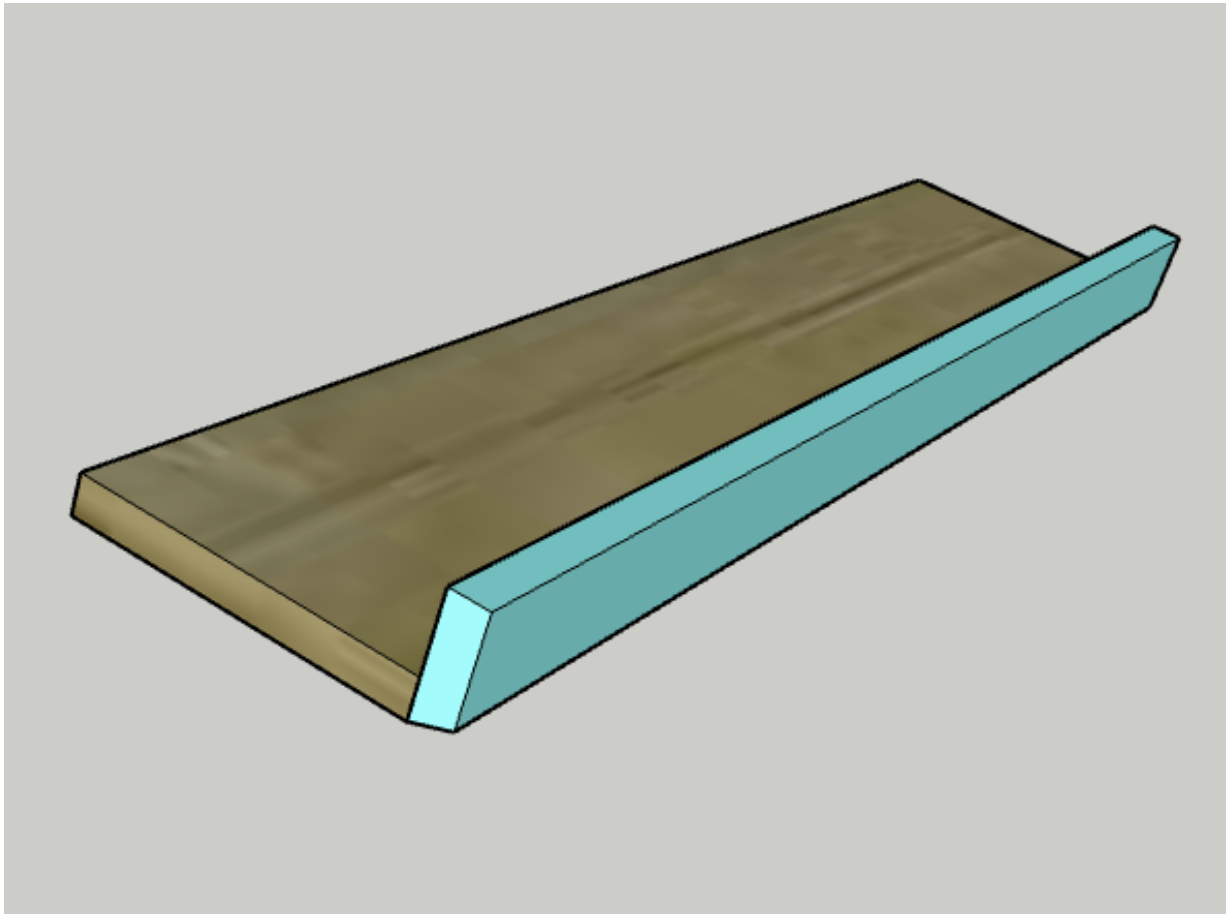
Use these marks as a guide to go along with the instructions. These are seen from the underside of the finished organizer.



---

# STEP ONE- BUILD FIRST TWO TIERS

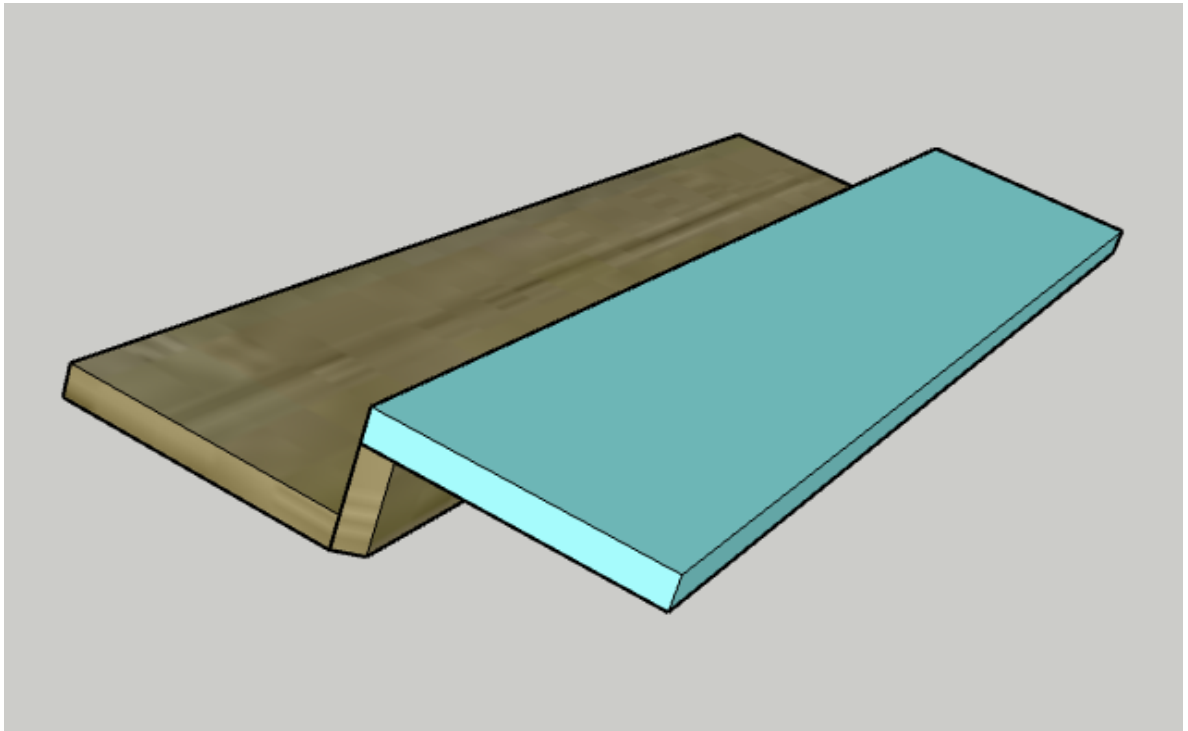
- Drill three pocket holes in two of the Shelf Backs.
- Drill three pocket holes in all three Shelf Risers on the long straight edge.
- Using pocket screws, attach a Shelf Back to a Shelf Riser with the angled edge of the Shelf Riser angled away from the Back.
- Repeat for a second Shelf Back and Riser.



---

## STEP TWO- ATTACH FIRST LEVEL

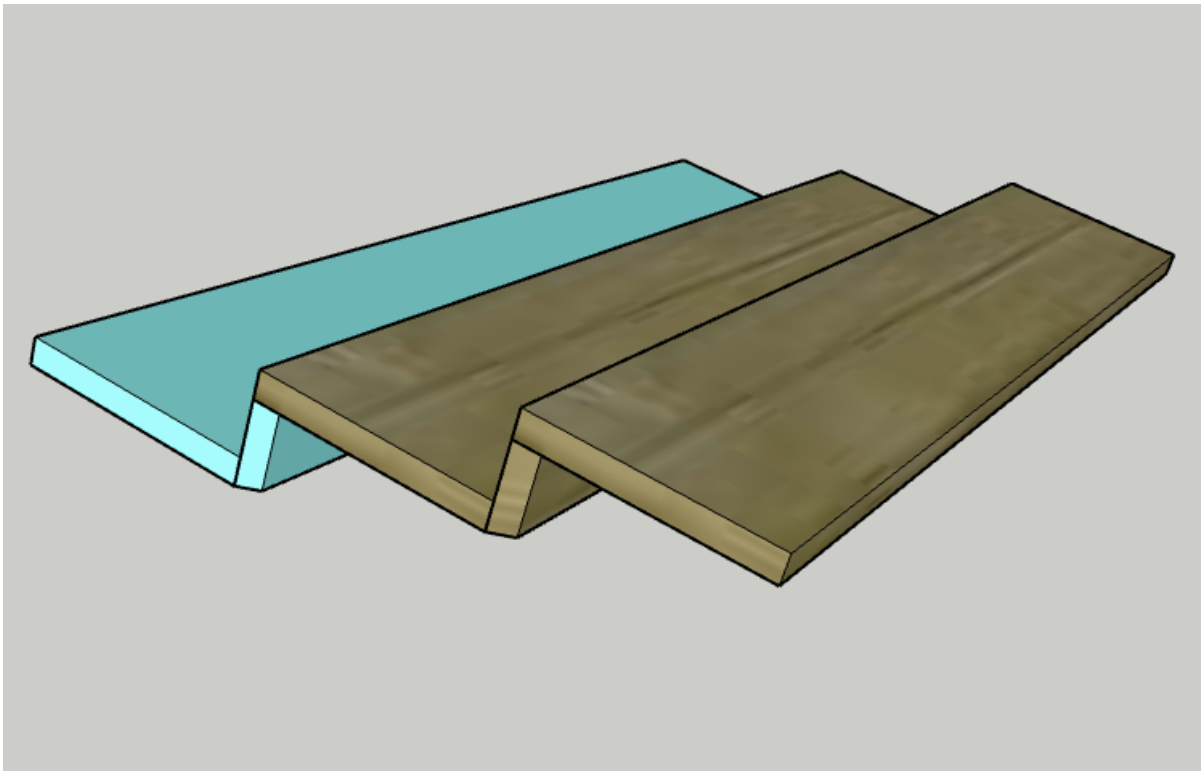
- Using pocket screws, attach the Shelf Back with no pocket holes to one of the tiers you created in step one.
- Attach flush on the edges.



---

## STEP THREE- ATTACH BACK TIER

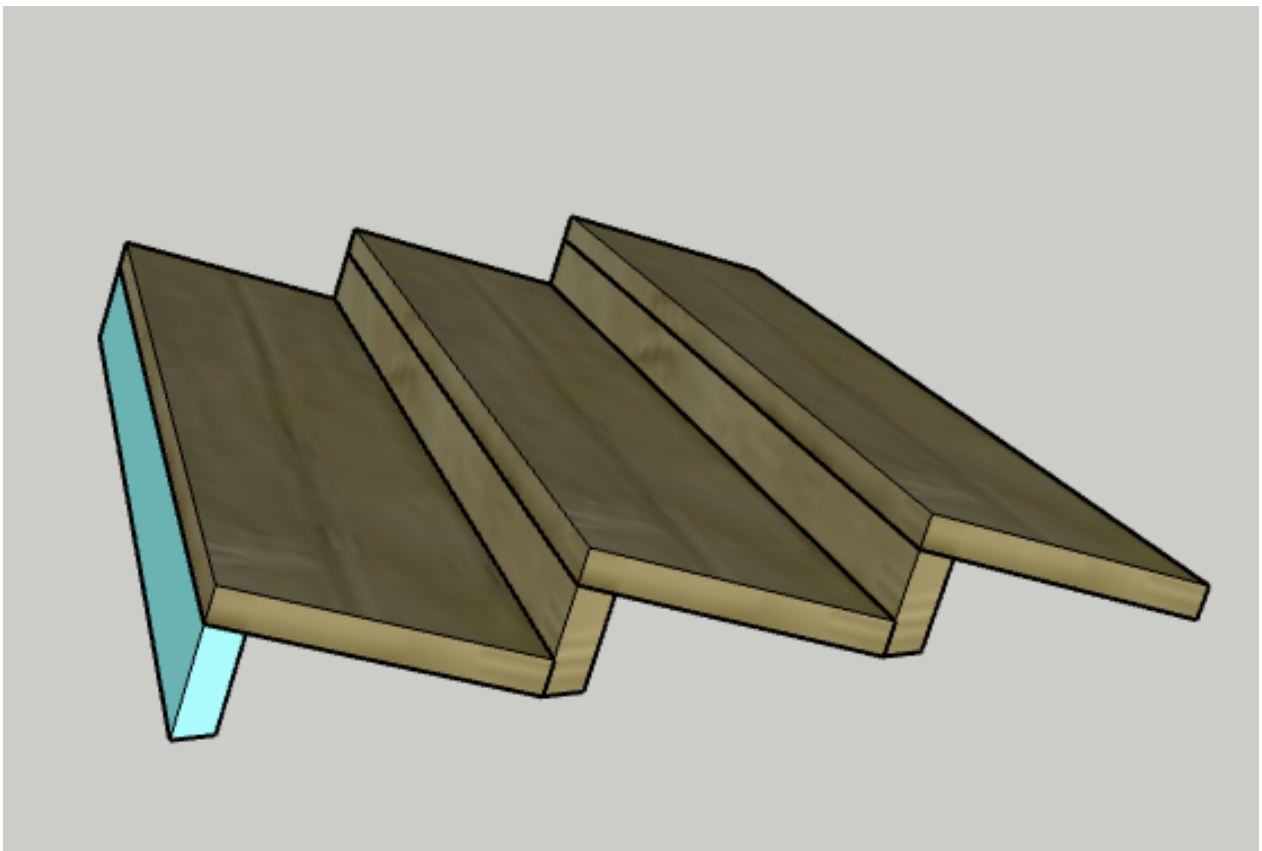
- Using pocket screws on the riser of the other tier created in step one, attach the tier to the Shelf Back on the first tier.



---

## STEP FOUR- ADD BACK RISER

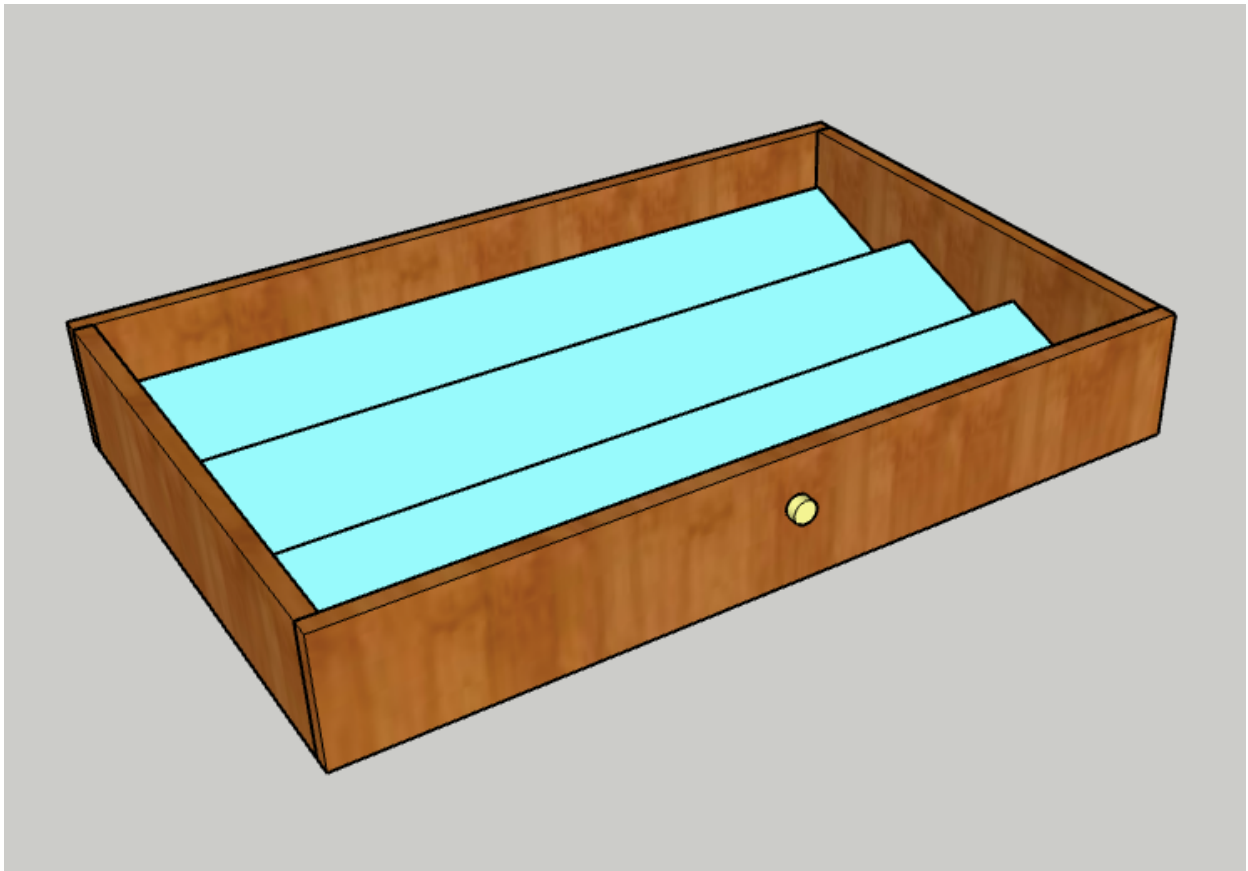
- Using pocket screws, attach the final Shelf Riser to the edge of the back Shelf Back.



---

## STEP FIVE- STAIN AND INSERT

- Add stain and finish to suit your decor style if you desire. Plywood is roughly the same color as the inside of most drawers, so you can leave natural to blend.
- Insert the organizer into your drawer. It should fit snugly, but you can add a bracket to the back Shelf Riser if it is sliding around.



---

# STEP SIX- SWAP SPICES

- Transfer all your spices to the glass spice jars and add labels.
- Sort by alphabetical order.





---

# FINAL STEP- ENJOY!

- Enjoy your handiwork and tag @CharlestonCrafted on Instagram with a picture!

Charleston  
Crafted