

TABLE OF CONTENTS	
SHT NO.	DESCRIPTION
1	COVER PAGE
2	OVERALL DIMENSIONS
3	WALL CABINET ASSEMBLY
4	BASE CABINET ASSEMBLY
5	BASE CABINET ASSEMBLY CONT.
6	CABINET CARCASS PARTS
7	CABINET CARCASS PARTS CONT.
8	FACE FRAME ASSEMBLIES
9	FACE FRAME PARTS
10	DRAWER BOX ASSEMBLY
11	DRAWER PARTS
12	DRAWER PARTS CONT.
13	RAISED PANEL DOOR ASSEMBLY
14	GLASS INSERT DOOR ASSEMBLY
15	RAISED PANEL DOOR PARTS
16	SHEET LAYOUT 1
17	SHEET LAYOUT 2

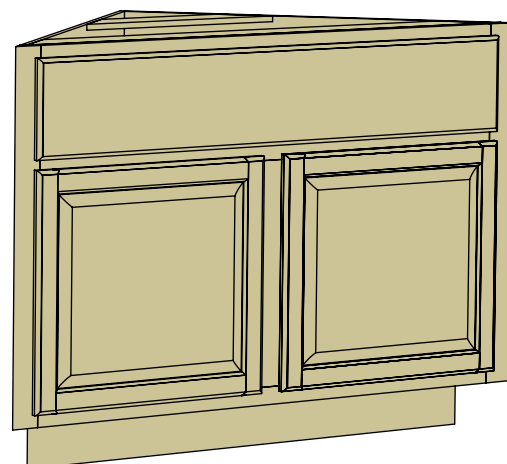
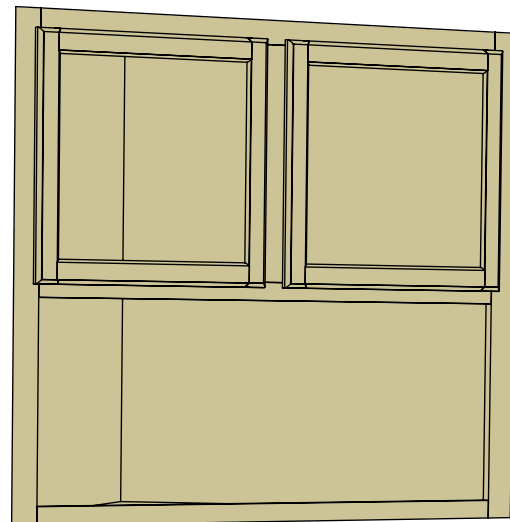


www.woodshopmike.com
mike@woodshopmike.com

www.woodshopmike.com
mike@woodshopmike.com

CORNER CABINET SET AND RAISED PANEL DOORS

WATCH THE BUILD VIDEO!



MATERIALS (per door)	
ITEM	QTY
1/2" PLYWOOD 4'X8'	3 SHEETS
1/4 PLYWOOD 4'X8'	1/4 SHEET
4/4 HARDWOOD OF CHOICE	27 BF
GLUE	32 oz
1-1/2" BRAD NAILS	~25
1-1/4" POCKET HOLE SCREWS	~50
3/4" POCKET HOLE SCREWS	~100
EURO HINGE	8
ACCURIDE ECLIPSE DRAWER SLIDE 14"	1 SET
GLASS RETAINER CLIPS	24
FINISH OF CHOICE	1 QUART

PROJECT NAME: CORNER CABINET SET AND RAISED PANEL DOORS
DRAWING NAME: COVER SHEET

REV	DATE	BY	DESCRIPTION
00	9-30-2021	MP	INITIAL RELEASE

Woodshop Mike, LLC and it's affiliates are not responsible for any damages that may come to persons or properties involved during the creation or use of this project or plans. The use of these plans and construction of this projects is acknowledgement that you as the fabricator assume all liability for proper construction and safe use of the project through all stages.

SHT. NO:

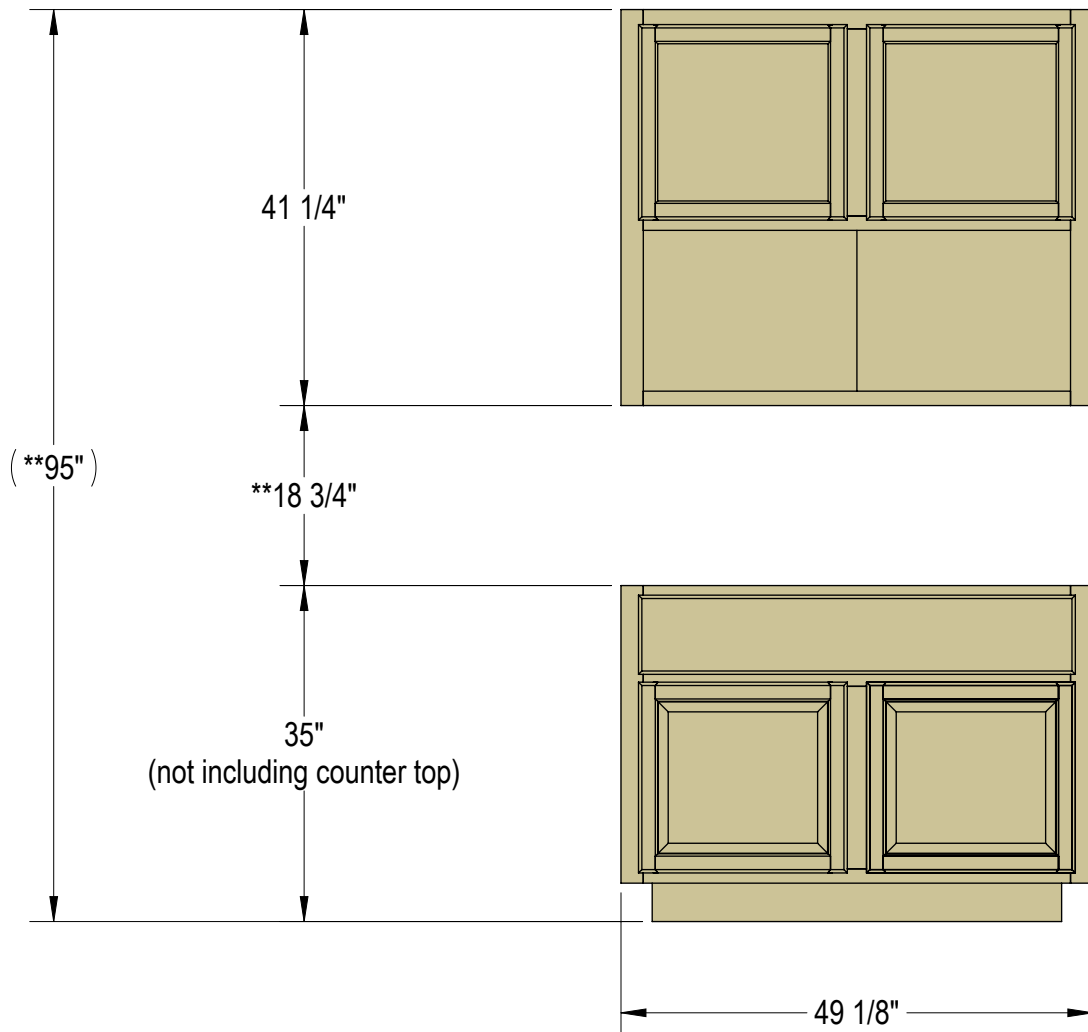
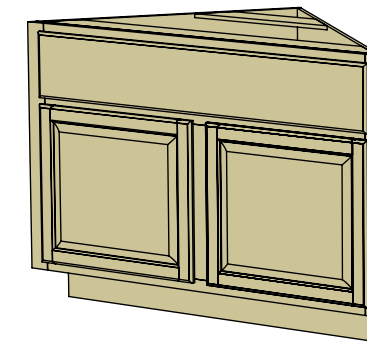
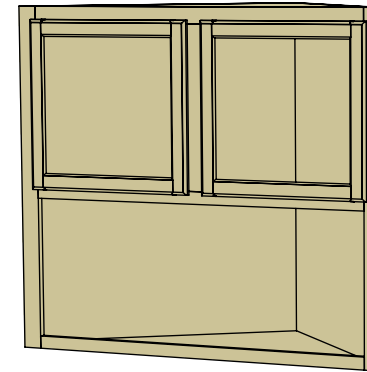
1

ACCURIDE ECLIPSE UNDERMOUNT SOFT CLOSE
HARDWARE FOR CENTER DRAWER.

SOFT CLOSE EURO STYLE HINGES TO BE USED.

** SPACING WILL VARY DEPENDING ON CEILING HEIGHT.

OPTIONAL
DOORS TO HAVE
GLASS CENTER PANEL



www.woodshopmike.com
mike@woodshopmike.com

PROJECT NAME: CORNER CABINET SET AND RAISED
PANEL DOORS
DRAWING NAME: OVERALL DIMENSIONS

REV	DATE	BY	DESCRIPTION
00	9-30-2021	MP	INITIAL RELEASE

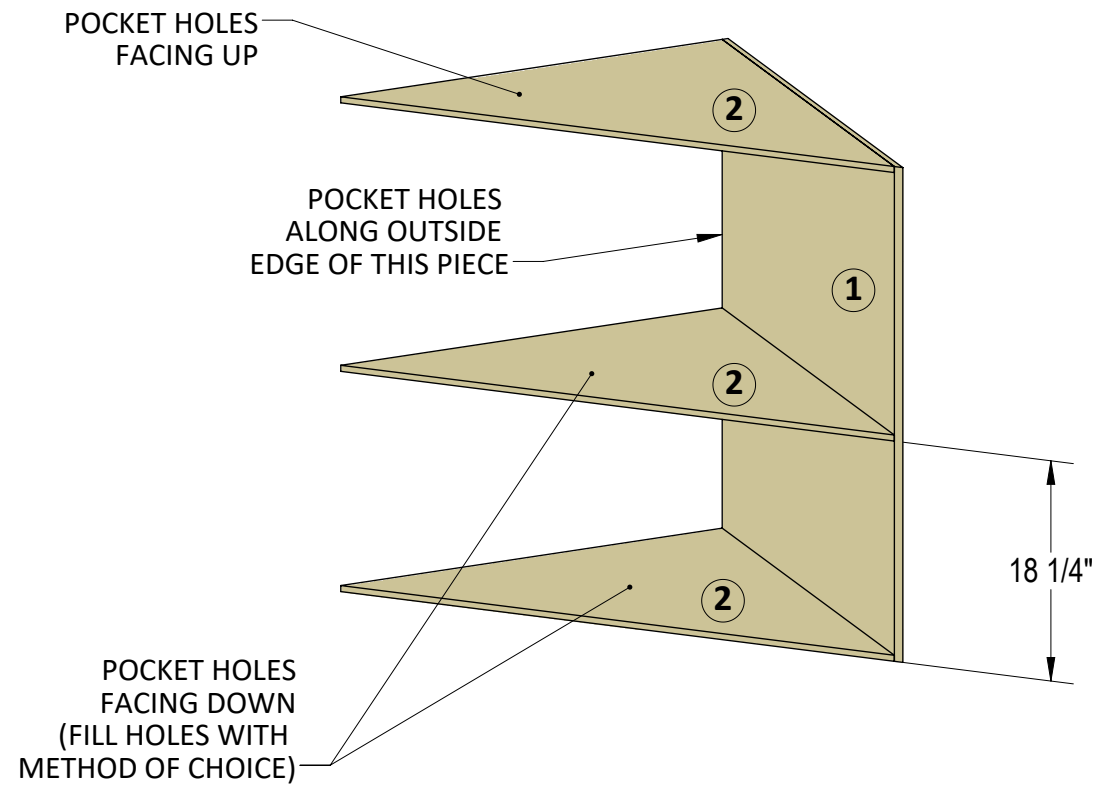
Woodshop Mike, LLC and it's affiliates are not responsible for any damages that may come to persons or properties involved during the creation or use of this project or plans. The use of these plans and construction of this projects is acknowledgement that you as the fabricator assume all liability for proper construction and safe use of the project through all stages.

SHT. NO:

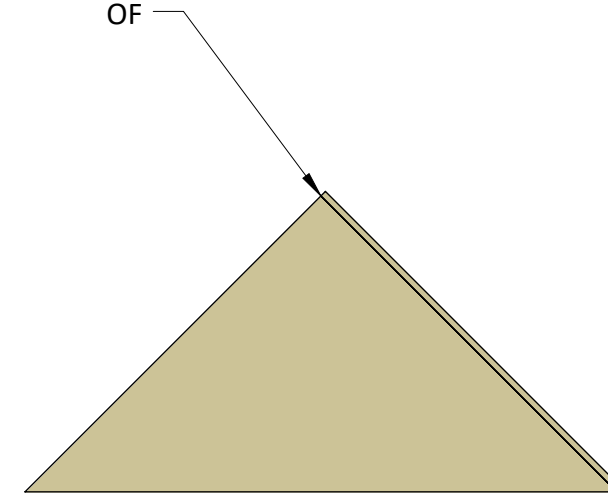
2

STEP 1

SCREW THREE OF PART 2 TO PART 1 AS SHOWN USING 3/4" POCKET HOLE SCREWS.

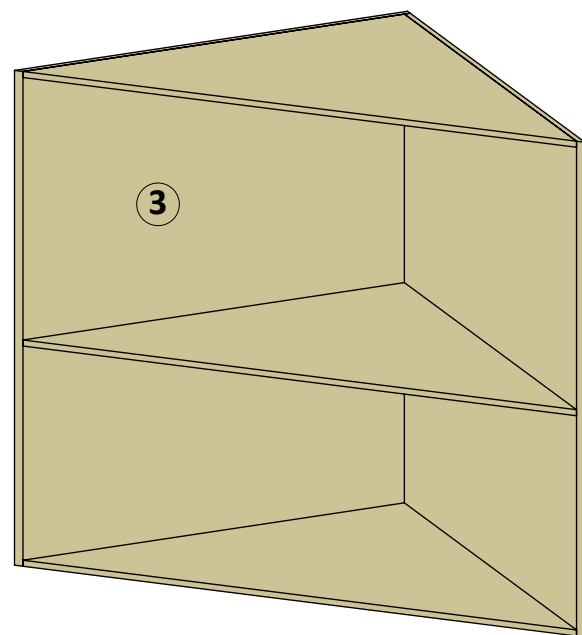


CABINET RIGHT SIDE FLUSH WITH CORNER OF



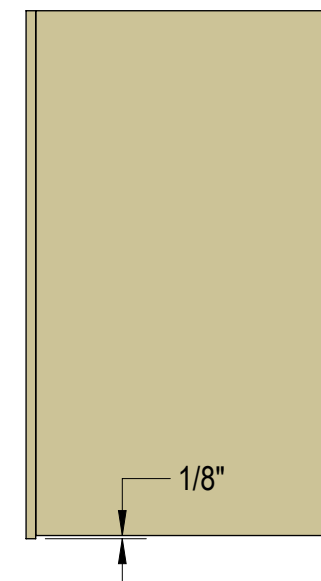
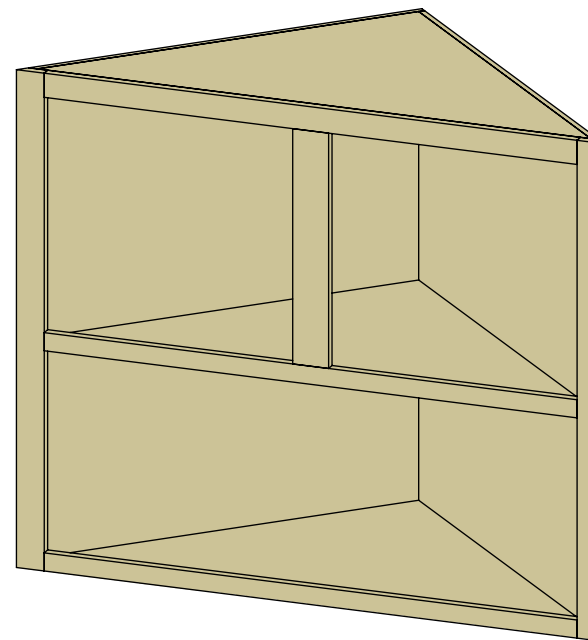
STEP 2

SCREW PARTS 1, 2, AND 3 TOGETHER AS SHOWN USING 3/4" POCKET HOLE SCREWS.



STEP 3

SCREW WALL CABINET FACE FRAME (see pg 5-6) TO CABINET AS SHOWN USING 3/4" POCKET HOLE SCREWS.



www.woodshopmike.com
mike@woodshopmike.com

PROJECT NAME: CORNER CABINET SET AND RAISED PANEL DOORS
DRAWING NAME: WALL CABINET ASSEMBLY

REV	DATE	BY	DESCRIPTION
00	9-30-2021	MP	INITIAL RELEASE

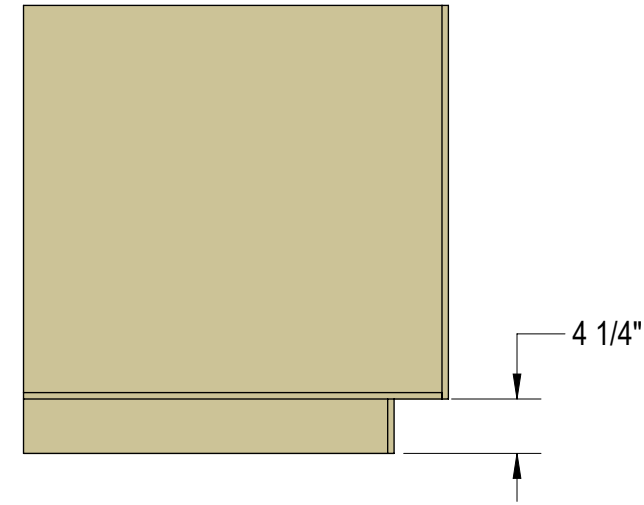
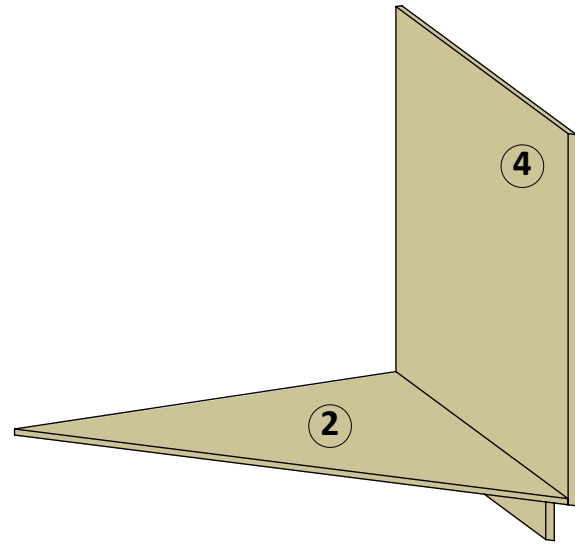
Woodshop Mike, LLC and it's affiliates are not responsible for any damages that may come to persons or properties involved during the creation or use of this project or plans. The use of these plans and construction of this projects is acknowledgement that you as the fabricator assume all liability for proper construction and safe use of the project through all stages.

SHT. NO:

3

STEP 1

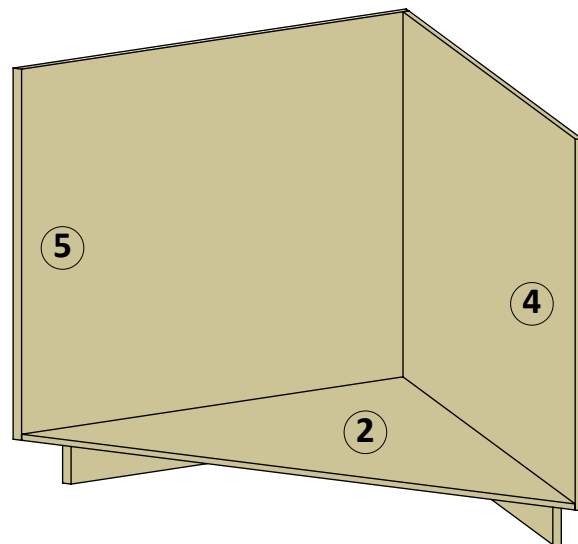
SCREW ONE OF PART 2 TO PART 4 AS SHOWN USING 3/4" POCKET HOLE SCREWS.



www.woodshopmike.com
mike@woodshopmike.com

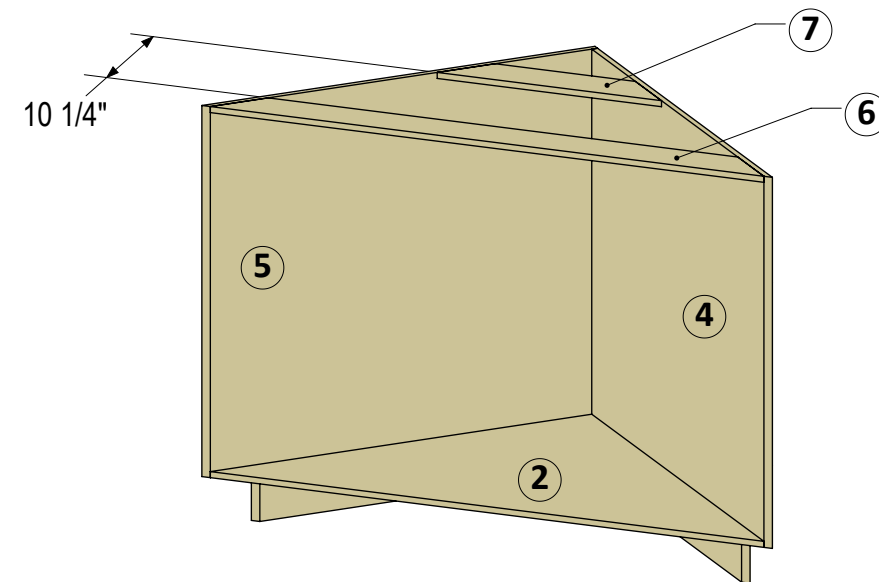
STEP 2

SCREW PARTS 2, 4, AND 5 TOGETHER AS SHOWN USING 3/4" POCKET HOLE SCREWS.



STEP 3

SCREW PARTS 6 AND 7 TO PARTS 4 AND 5 AS SHOWN USING 3/4" POCKET HOLE SCREWS.



PROJECT NAME: CORNER CABINET SET AND RAISED PANEL DOORS
DRAWING NAME: BASE CABINET ASSEMBLY

REV	DATE	BY	DESCRIPTION
00	9-30-2021	MP	INITIAL RELEASE

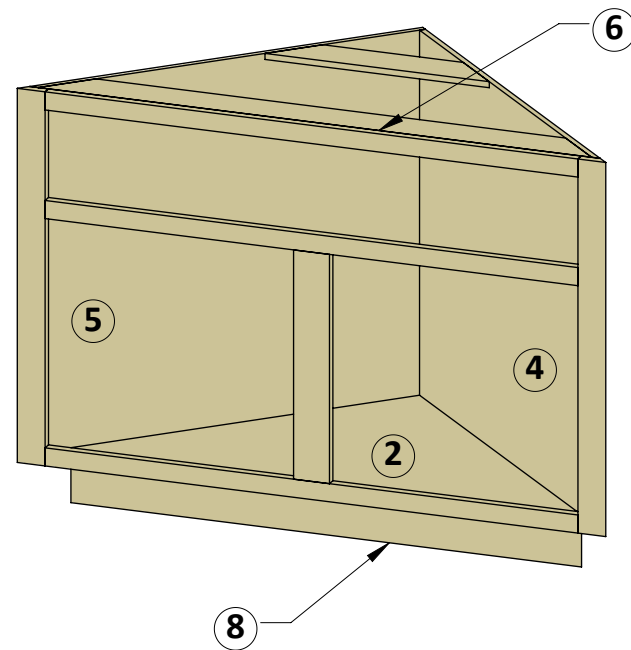
Woodshop Mike, LLC and its affiliates are not responsible for any damages that may come to persons or properties involved during the creation or use of this project or plans. The use of these plans and construction of this projects is acknowledgement that you as the fabricator assume all liability for proper construction and safe use of the project through all stages.

SHT. NO: 4

STEP 4

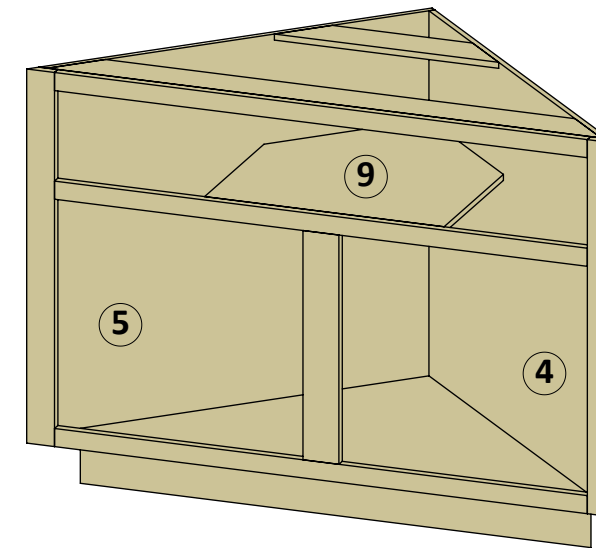
SCREW BASE CABINET FACE FRAME (see pg 5-6)
TO PARTS 4, 5, AND 6 AS SHOWN USING
3/4" POCKET HOLE SCREWS.

SCREW PART 8 TO PART 2
AS SHOWN USING
3/4" POCKET HOLE SCREWS.



STEP 5

SCREW PART 9
TO PARTS 4, 5, AND FACE FRAME
AS SHOWN USING 3/4" POCKET HOLE SCREWS.



www.woodshopmike.com
mike@woodshopmike.com

PROJECT NAME: CORNER CABINET SET AND RAISED
PANEL DOORS
DRAWING NAME: BASE CABINET ASSEMBLY CONT.

REV	DATE	BY	DESCRIPTION
00	9-30-2021	MP	INITIAL RELEASE

Woodshop Mike, LLC and it's affiliates are not responsible for any damages that may come to persons or properties involved during the creation or use of this project or plans. The use of these plans and construction of this projects is acknowledgement that you as the fabricator assume all liability for proper construction and safe use of the project through all stages.

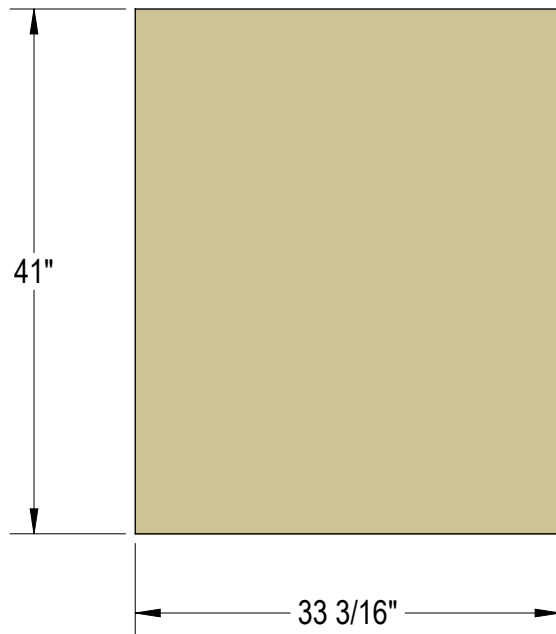
SHT. NO:

5



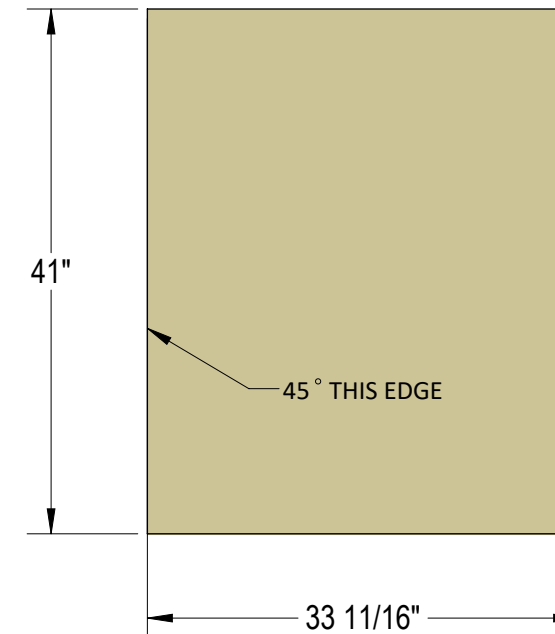
www.woodshopmike.com
mike@woodshopmike.com

CUT EDGE AT 45°

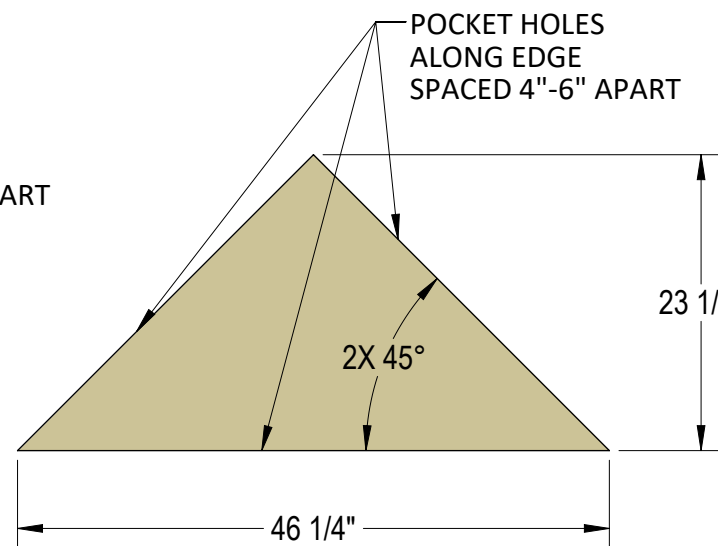


PART: 1
MTR'L: 1/2" PLYWOOD
QTY: 1

CUT EDGE AT 45°

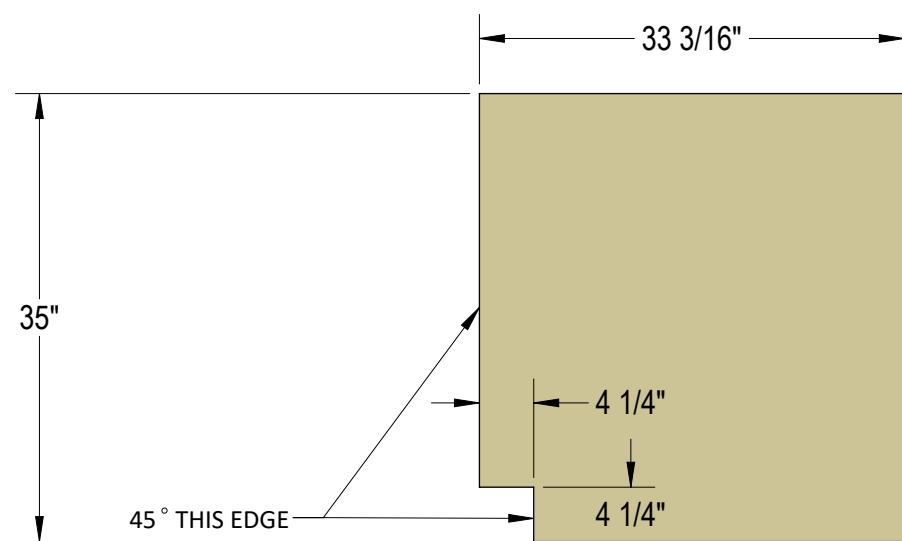


PART: 3
MTR'L: 1/2" PLYWOOD
QTY: 1



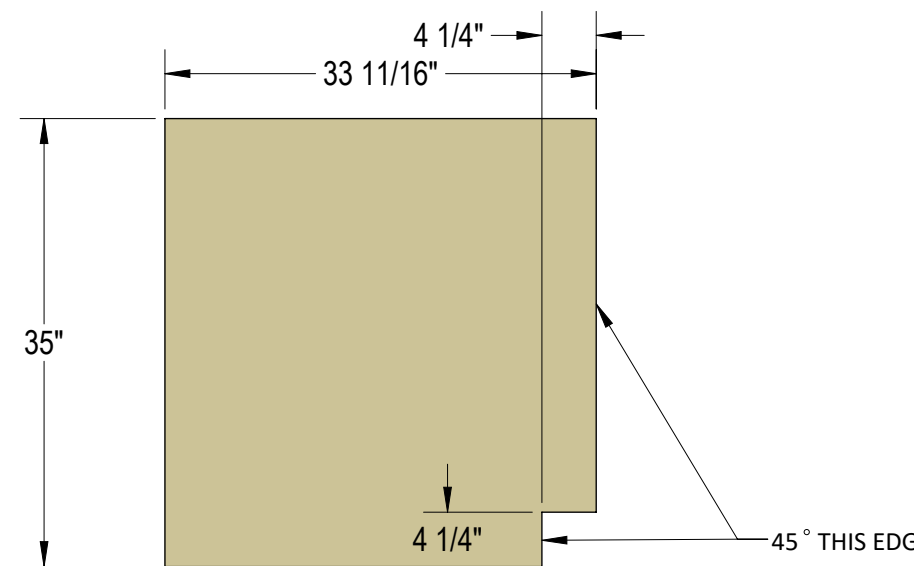
PART: 2
MTR'L: 1/2" PLYWOOD
QTY: 4

CUT EDGE AT 45°



PART: 4
MTR'L: 1/2" PLYWOOD
QTY: 1

CUT EDGE AT 45°



PART: 5
MTR'L: 1/2" PLYWOOD
QTY: 1

PROJECT NAME: CORNER CABINET SET AND RAISED
PANEL DOORS

DRAWING NAME: CABINET CARCASS PARTS

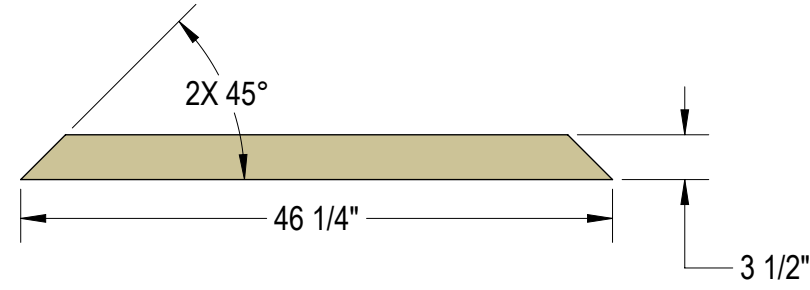
REV	DATE	BY	DESCRIPTION
00	9-30-2021	MP	INITIAL RELEASE

Woodshop Mike, LLC and its affiliates are not responsible for any damages that may come to persons or properties involved during the creation or use of this project or plans. The use of these plans and construction of this projects is acknowledgement that you as the fabricator assume all liability for proper construction and safe use of the project through all stages.

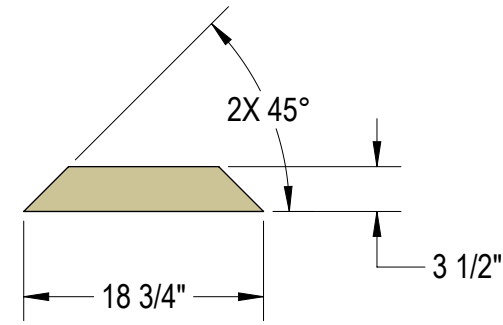
SHT. NO:

6

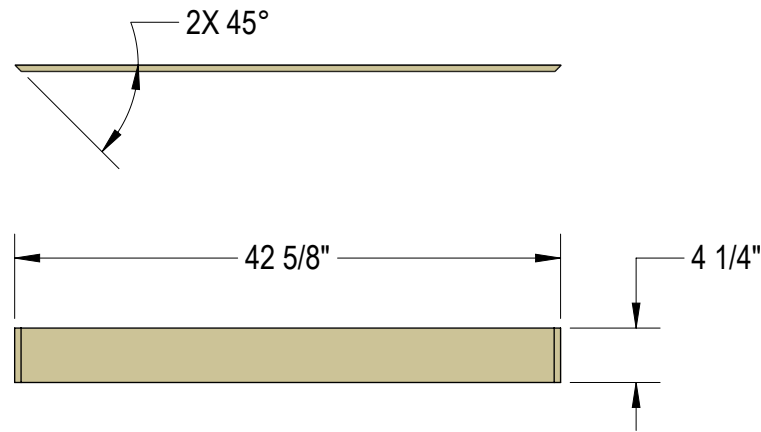
NOTE: DRILL 2-3 MICRO POCKET HOLES FOR 3/4" LONG MICRO POCKET HOLE SCREWS AT BOTH ENDS OF EACH PIECE.



PART: 6
MTR'L: 1/2" PLYWOOD
QTY: 1



PART: 7
MTR'L: 1/2" PLYWOOD
QTY: 1



PART: 8
MTR'L: 1/2" PLYWOOD
QTY: 1



www.woodshopmike.com
mike@woodshopmike.com

PROJECT NAME: CORNER CABINET SET AND RAISED
PANEL DOORS
DRAWING NAME: CABINET CARCASS PARTS CONT.

REV	DATE	BY	DESCRIPTION
00	9-30-2021	MP	INITIAL RELEASE

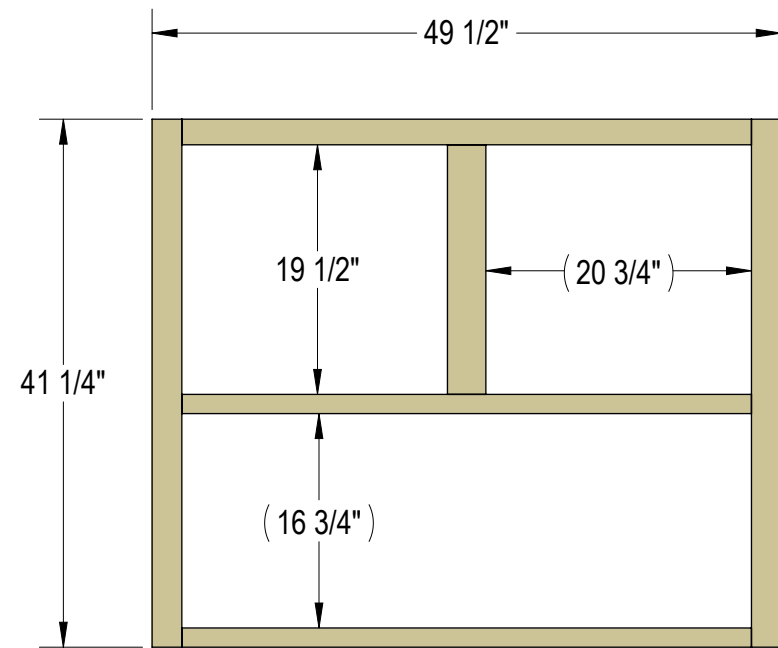
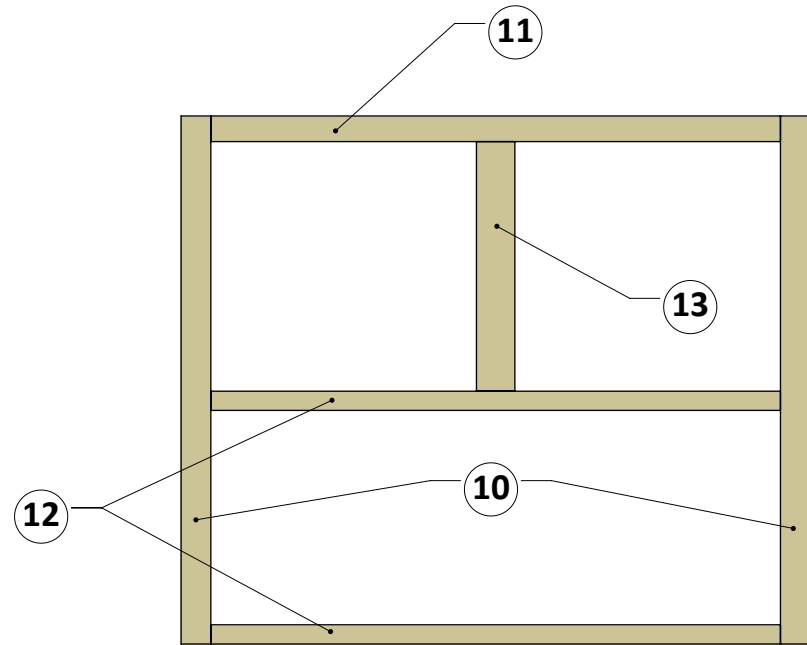
Woodshop Mike, LLC and it's affiliates are not responsible for any damages that may come to persons or properties involved during the creation or use of this project or plans. The use of these plans and construction of this projects is acknowledgement that you as the fabricator assume all liability for proper construction and safe use of the project through all stages.

SHT. NO: 7

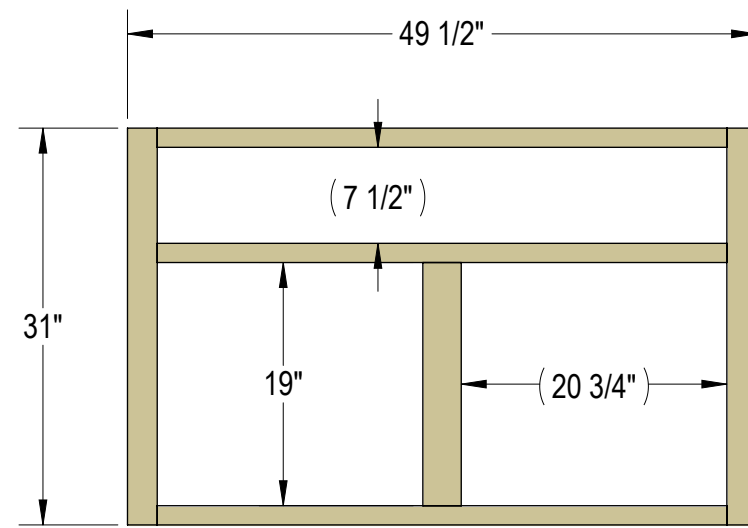
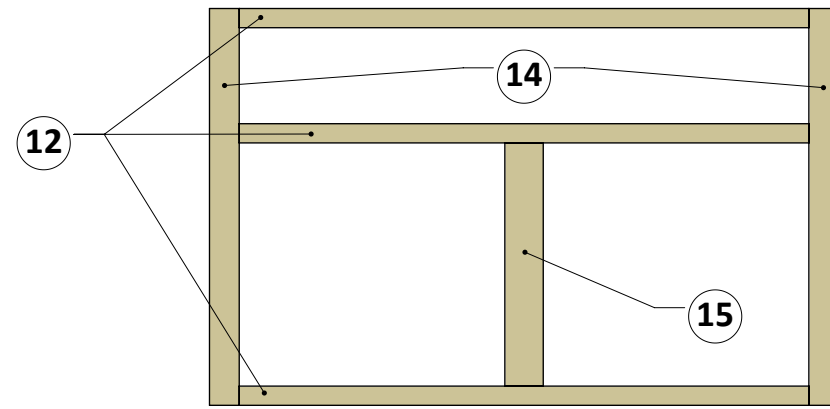
Reproduction of this document without the written authorization of Woodshop Mike, LLC is strictly prohibited Copyright 2021, Woodshop Mike, LLC

NOTE: CUT BACK SIDE OF FACE FRAMES
AT 45° TO BE FLUSH WITH CABINET SIDES.

ASSEMBLE FACE FRAME WITH 1-1/4" POCKET HOLE SCREWS



WALL CABINET FACE FRAME ASSEMBLY
MTR'L: 3/4" THICK HARDWOOD
QTY: 1



BASE CABINET FACE FRAME ASSEMBLY
MTR'L: 3/4" THICK HARDWOOD
QTY: 1



www.woodshopmike.com
mike@woodshopmike.com

PROJECT NAME: CORNER CABINET SET AND RAISED
PANEL DOORS
DRAWING NAME: FACE FRAME ASSEMBLIES

REV	DATE	BY	DESCRIPTION
00	9-30-2021	MP	INITIAL RELEASE

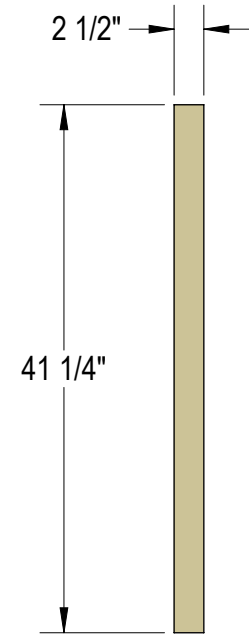
Woodshop Mike, LLC and its affiliates are not responsible for any damages that may come to persons or properties involved during the creation or use of this project or plans. The use of these plans and construction of this projects is acknowledgement that you as the fabricator assume all liability for proper construction and safe use of the project through all stages.

SHT. NO:

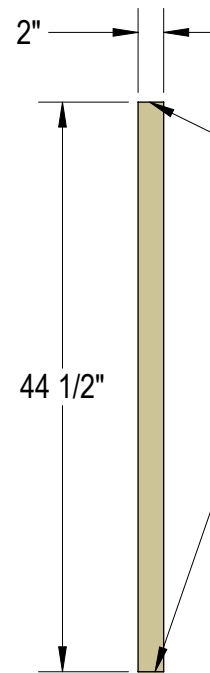
8



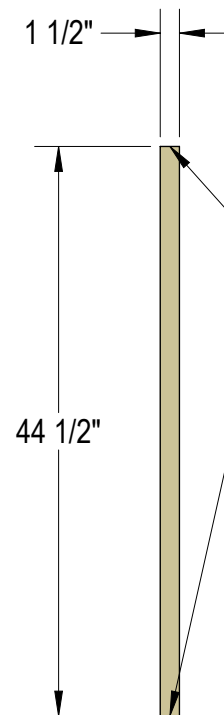
www.woodshopmike.com
mike@woodshopmike.com



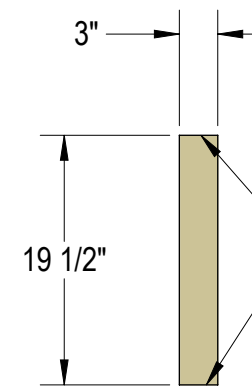
PART: 10
MTR'L: 3/4" THICK HARDWOOD
QTY: 2



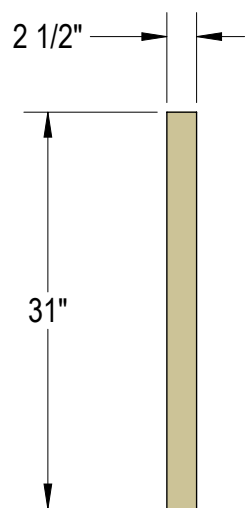
PART: 11
MTR'L: 3/4" THICK HARDWOOD
QTY: 1



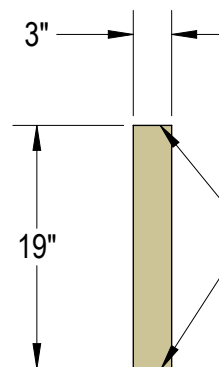
PART: 12
MTR'L: 3/4" THICK HARDWOOD
QTY: 5



PART: 13
MTR'L: 3/4" THICK HARDWOOD
QTY: 1



PART: 14
MTR'L: 3/4" THICK HARDWOOD
QTY: 2



PART: 15
MTR'L: 3/4" THICK HARDWOOD
QTY: 1

PROJECT NAME: CORNER CABINET SET AND RAISED
PANEL DOORS
DRAWING NAME: FACE FRAME PARTS

REV	DATE	BY	DESCRIPTION
00	9-30-2021	MP	INITIAL RELEASE

Woodshop Mike, LLC and it's affiliates are not responsible for any damages that may come to persons or properties involved during the creation or use of this project or plans. The use of these plans and construction of this projects is acknowledgement that you as the fabricator assume all liability for proper construction and safe use of the project through all stages.

SHT. NO:

9

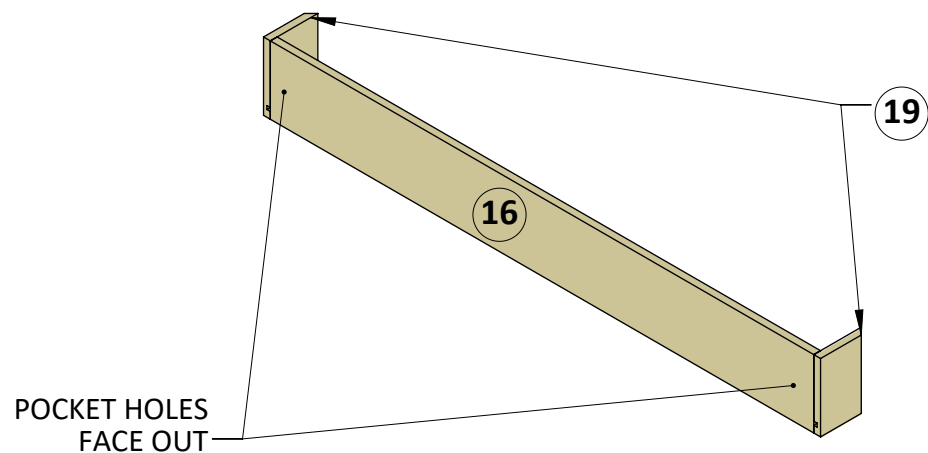
Reproduction of this document without the written authorization of Woodshop Mike, LLC is strictly prohibited Copyright 2021, Woodshop Mike, LLC



www.woodshopmike.com
mike@woodshopmike.com

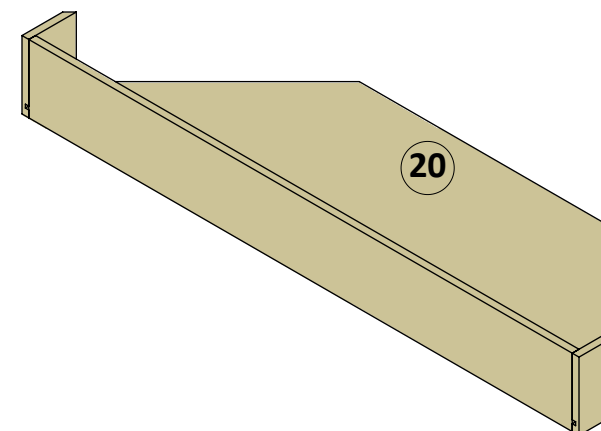
STEP 1

SCREW TWO OF PART 19 TO PARTS 16 AS SHOWN USING 3/4" POCKET HOLE SCREWS.



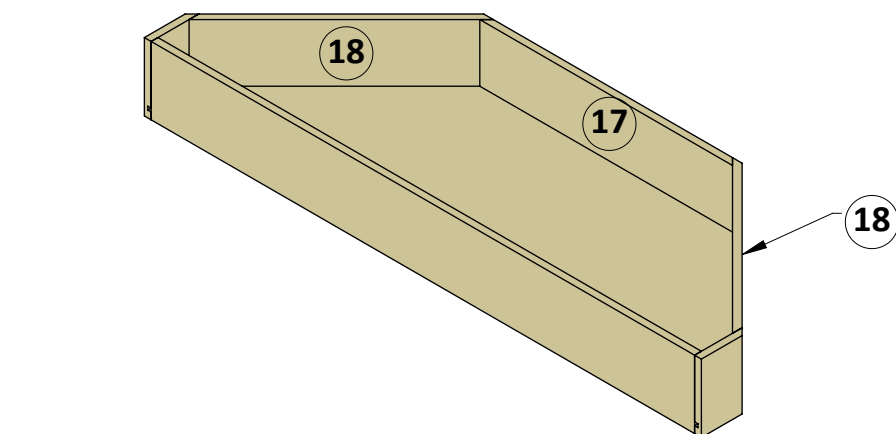
STEP 2

SLIDE PART 20 INTO GROOVE IN PARTS 16 AND 19



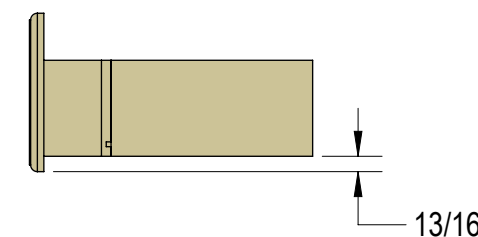
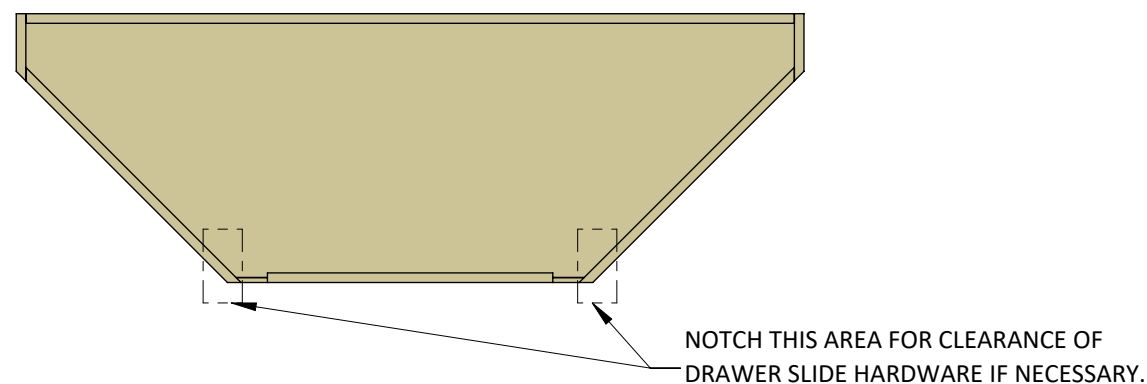
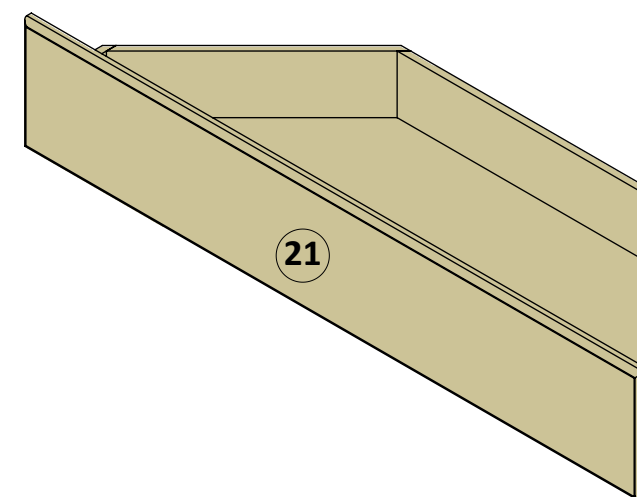
STEP 3

GLUE AND BRAD NAIL PARTS 17 AND 18 TO PART 19 AS SHOWN.



STEP 4

ATTACH DRAWER FRONT (PART 21) CENTERED ON DRAWER BOX AND OFFSET FROM THE BOTTOM OF THE DRAWER BOX AS SHOWN. (see build video for drawer slide modification and install)

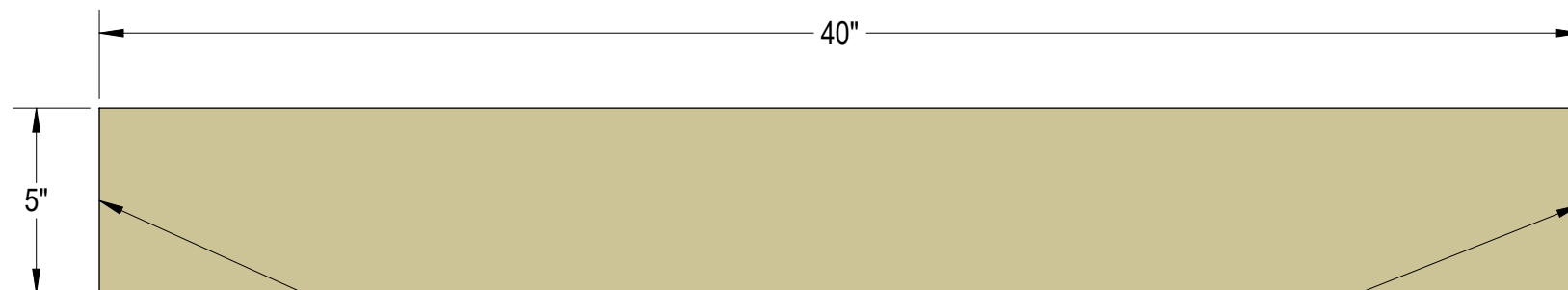


PROJECT NAME: CORNER CABINET SET AND RAISED PANEL DOORS
DRAWING NAME: DRAWER BOX ASSEMBLY

REV	DATE	BY	DESCRIPTION
00	9-30-2021	MP	INITIAL RELEASE

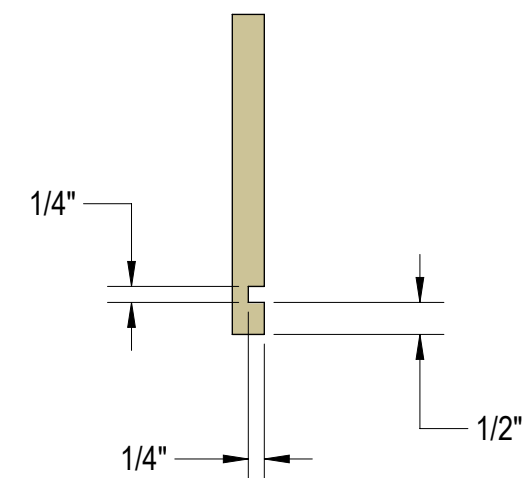
Woodshop Mike, LLC and it's affiliates are not responsible for any damages that may come to persons or properties involved during the creation or use of this project or plans. The use of these plans and construction of this projects is acknowledgement that you as the fabricator assume all liability for proper construction and safe use of the project through all stages.

SHT. NO: 10

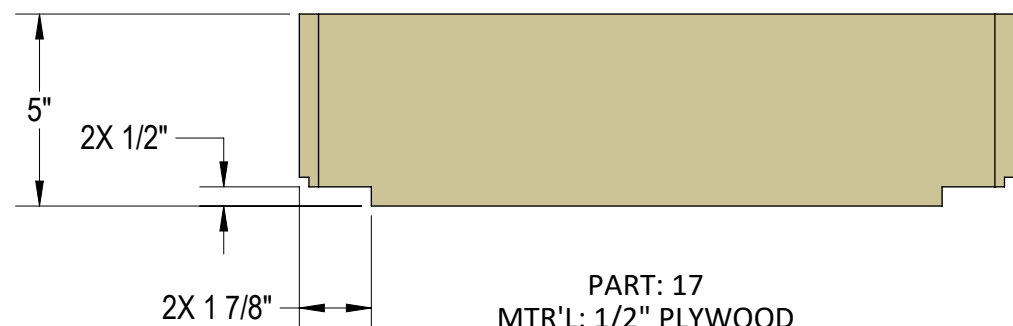
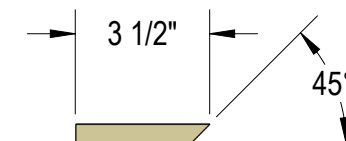
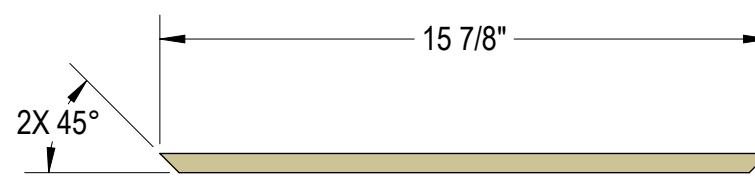
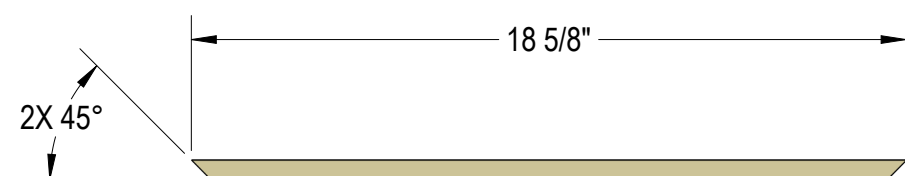


POCKET HOLES THIS EDGE
DRILL ABOVE GROOVE FOR BOTTOM

PART: 16
MTR'L: 1/2" PLYWOOD
QTY: 1



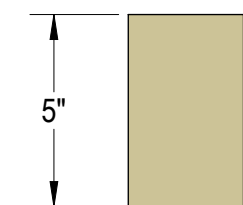
STANDARD GROOVE FOR
DRAWER BOTTOM



PART: 17
MTR'L: 1/2" PLYWOOD
QTY: 1



PART: 18
MTR'L: 1/2" PLYWOOD
QTY: 2



PART: 19
MTR'L: 1/2" PLYWOOD
QTY: 2

PROJECT NAME: CORNER CABINET SET AND RAISED
PANEL DOORS
DRAWING NAME: DRAWER PARTS

REV	DATE	BY	DESCRIPTION
00	9-30-2021	MP	INITIAL RELEASE

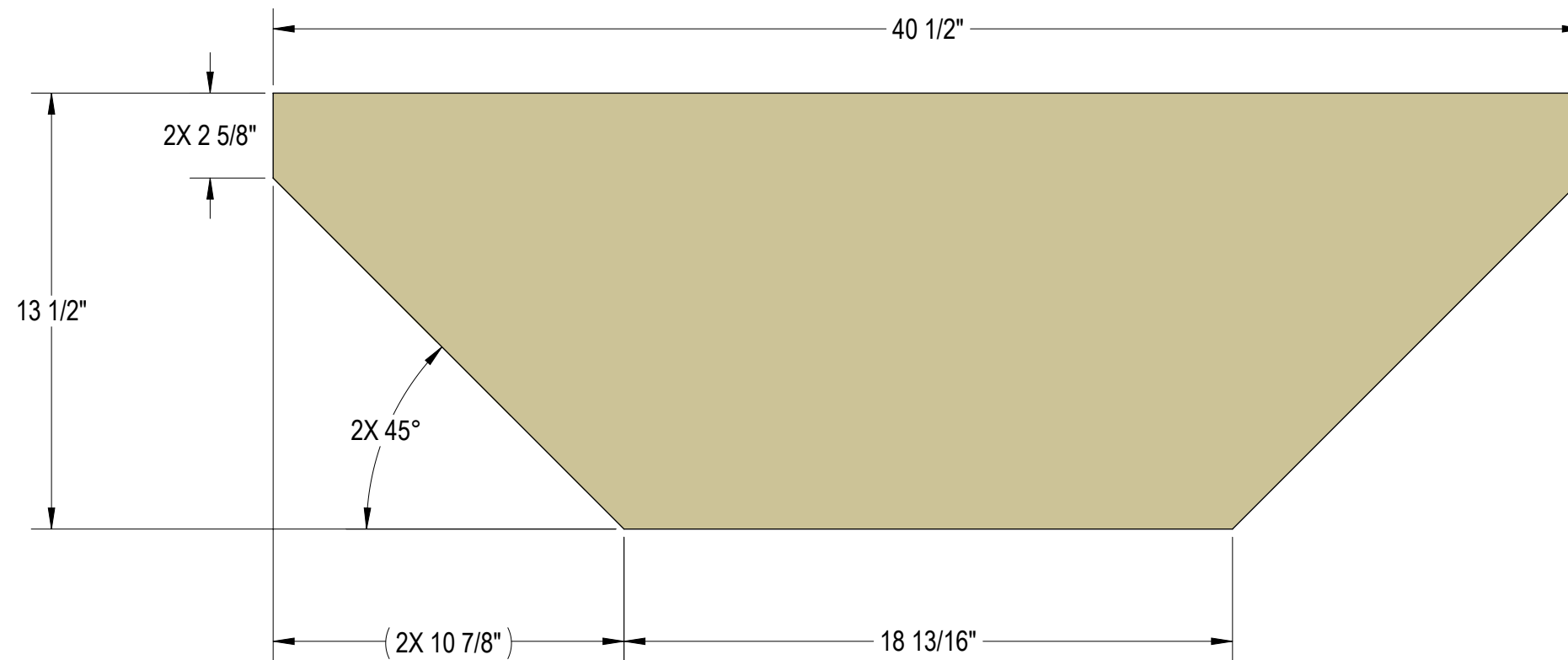
Woodshop Mike, LLC and its affiliates are not responsible for any damages that may come to persons or properties involved during the creation or use of this project or plans. The use of these plans and construction of this projects is acknowledgement that you as the fabricator assume all liability for proper construction and safe use of the project through all stages.

SHT. NO:

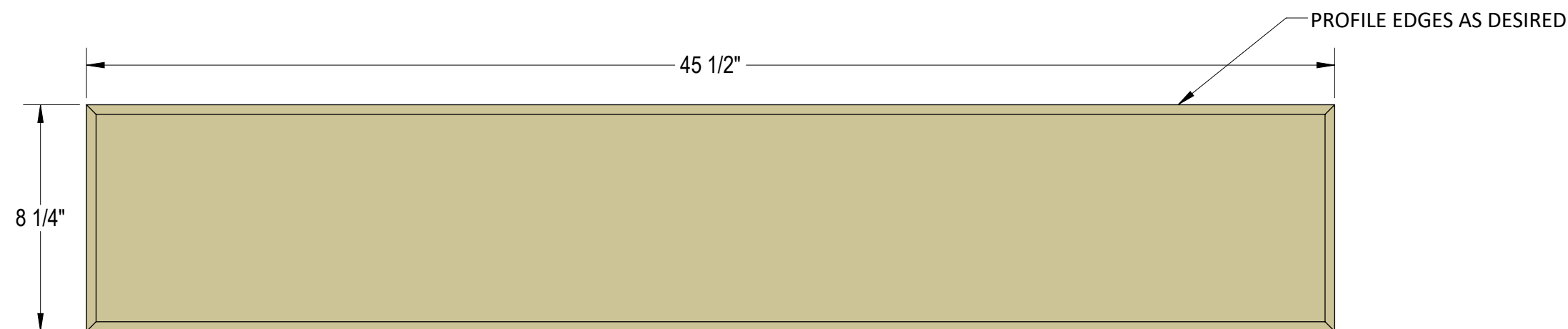
11



www.woodshopmike.com
mike@woodshopmike.com



PART: 20
MTR'L: 1/4" PLYWOOD
QTY: 1



PART: 21
MTR'L: 3/4" HARDWOOD
QTY: 1

PROJECT NAME: CORNER CABINET SET AND RAISED
PANEL DOORS
DRAWING NAME: DRAWER PARTS CONT.

REV	DATE	BY	DESCRIPTION
00	9-30-2021	MP	INITIAL RELEASE

Woodshop Mike, LLC and it's affiliates are not responsible for any damages that may come to persons or properties involved during the creation or use of this project or plans. The use of these plans and construction of this projects is acknowledgement that you as the fabricator assume all liability for proper construction and safe use of the project through all stages.

SHT. NO:

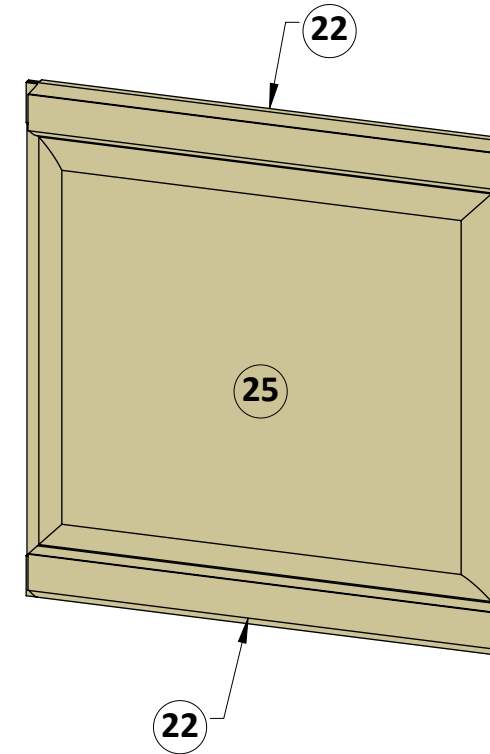
12

Reproduction of this document without the written authorization of Woodshop Mike, LLC is strictly prohibited Copyright 2021, Woodshop Mike, LLC

NOTE: PROFILE AROUND EDGE OF EACH DOOR TO BE CUT AFTER DOORS ARE ASSEMBLED.

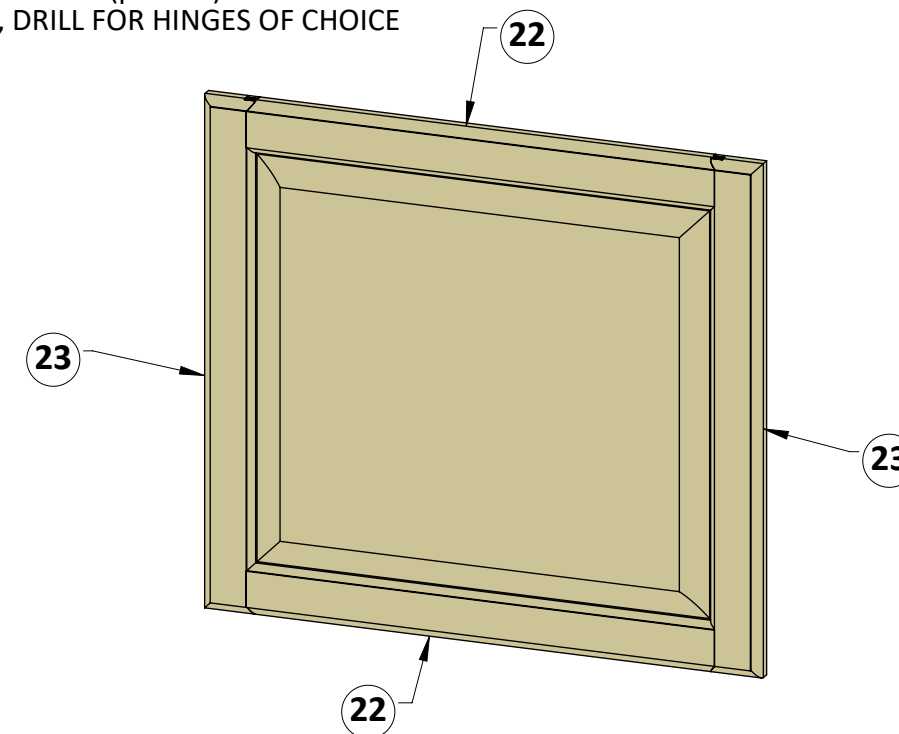
STEP 1

CENTER RAISED PANEL (part 25) INTO GROOVES OF RAIL (part 22).
DO NOT GLUE PARTS TOGETHER.



STEP 2

APPLY A SPARING AMOUNT OF GLUE TO BOTH ENDS OF EACH RAIL (part 22) AND FINISH ASSEMBLY AS SHOWN. CLAMP DOOR TOGETHER WITH ONE CLAMP PARALLEL TO EACH (part 22). ONCE GLUE HAS CURED, DRILL FOR HINGES OF CHOICE



www.woodshopmike.com
mike@woodshopmike.com

PROJECT NAME: CORNER CABINET SET AND RAISED PANEL DOORS
DRAWING NAME: RAISED PANEL DOOR ASSEMBLY

REV	DATE	BY	DESCRIPTION
00	9-30-2021	MP	INITIAL RELEASE

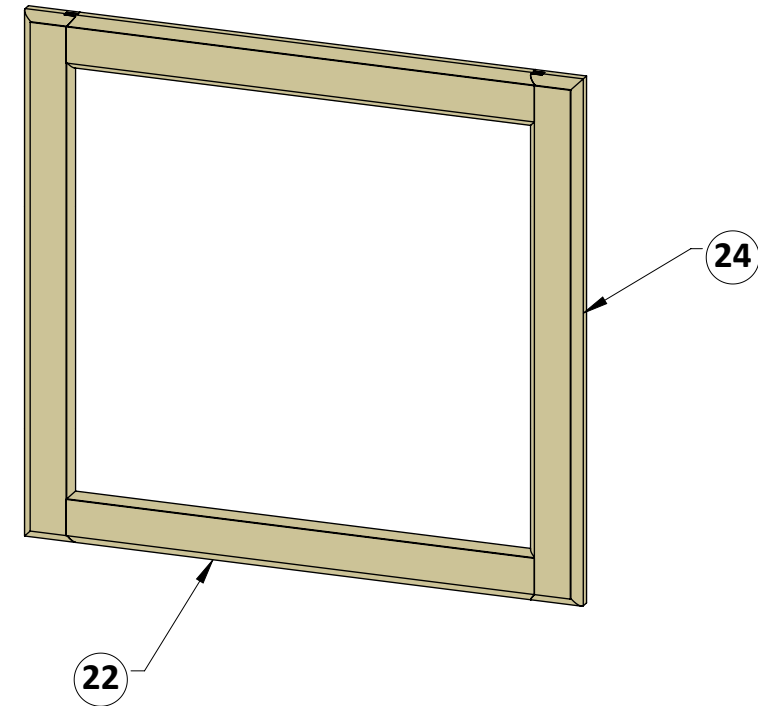
Woodshop Mike, LLC and it's affiliates are not responsible for any damages that may come to persons or properties involved during the creation or use of this project or plans. The use of these plans and construction of this projects is acknowledgement that you as the fabricator assume all liability for proper construction and safe use of the project through all stages.

SHT. NO:
13

NOTE: PROFILE AROUND EDGE OF EACH DOOR TO BE CUT AFTER DOORS ARE ASSEMBLED.

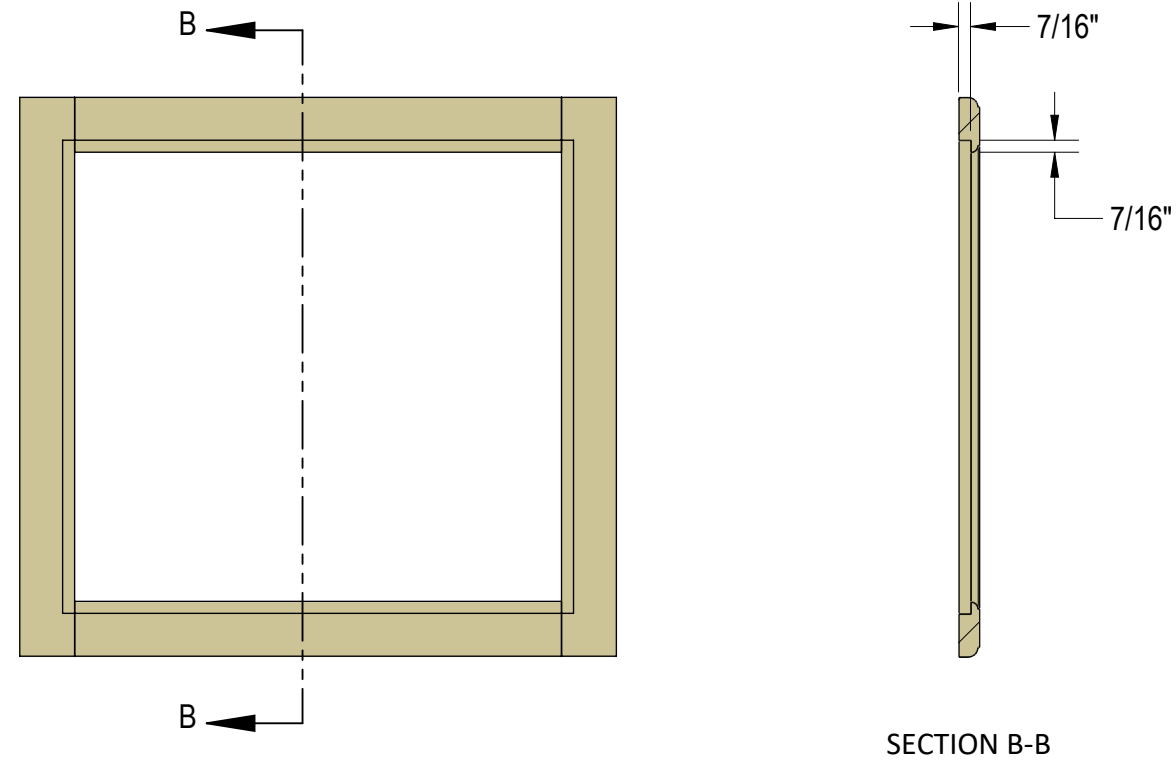
STEP 1

ASSEMBLE DOOR FRAME AS SHOWN WITH A SPARING AMOUNT OF GLUE TO THE END OF EACH RAIL (part 22). CLAMP DOOR TOGETHER WITH ONE CLAMP PARALLEL TO EACH (part 22).



STEP 2

RABBET CAN BE CUT BEFORE OR AFTER ASSEMBLY. IF RABBET IS CUT BEFORE ASSEMBLY (like in build video) FILLER PIECES WILL NEED TO BE ADDED. IF RABBET IS CUT AFTER ASSEMBLY THE CORNERS WILL NEED TO BE CHISELED OUT. ONCE GLUE HAS CURED, DRILL FOR GLASS HOLD DOWN CLAMPS AND HINGES OF CHOICE PER MFG GUIDELINES.



www.woodshopmike.com
mike@woodshopmike.com

PROJECT NAME: CORNER CABINET SET AND RAISED PANEL DOORS
DRAWING NAME: GLASS INSERT DOOR ASSEMBLY

REV	DATE	BY	DESCRIPTION
00	9-30-2021	MP	INITIAL RELEASE

Woodshop Mike, LLC and it's affiliates are not responsible for any damages that may come to persons or properties involved during the creation or use of this project or plans. The use of these plans and construction of this projects is acknowledgement that you as the fabricator assume all liability for proper construction and safe use of the project through all stages.

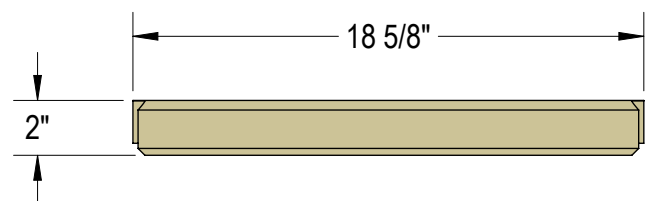
SHT. NO: 14

Reproduction of this document without the written authorization of Woodshop Mike, LLC is strictly prohibited Copyright 2021, Woodshop Mike, LLC



www.woodshopmike.com
mike@woodshopmike.com

NOTE: TONGUE AND GROOVE PROFILES WILL BE LARGELY DETERMINED BY ROUTER BITS USED.

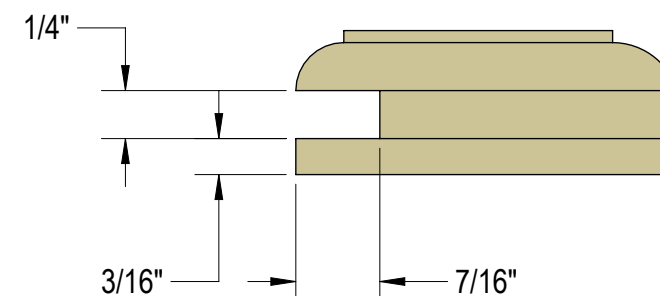


PART: 22
MTR'L: 3/4" THICK HARDWOOD
QTY: 8

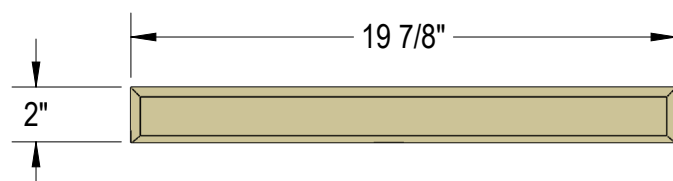
TONGUE PROFILE



GROOVE PROFILE

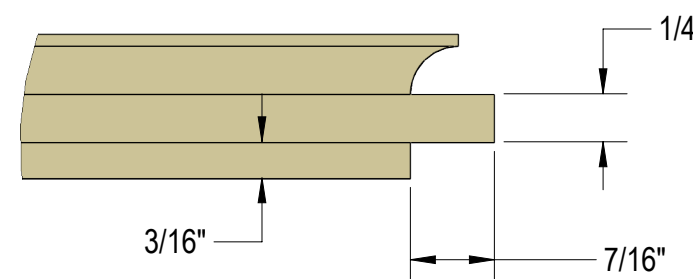


GROOVE PROFILE

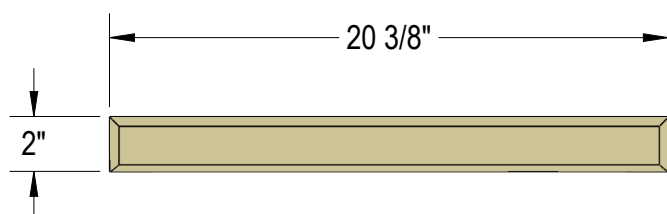


PART: 23
MTR'L: 3/4" THICK HARDWOOD
QTY: 4

GROOVE PROFILE

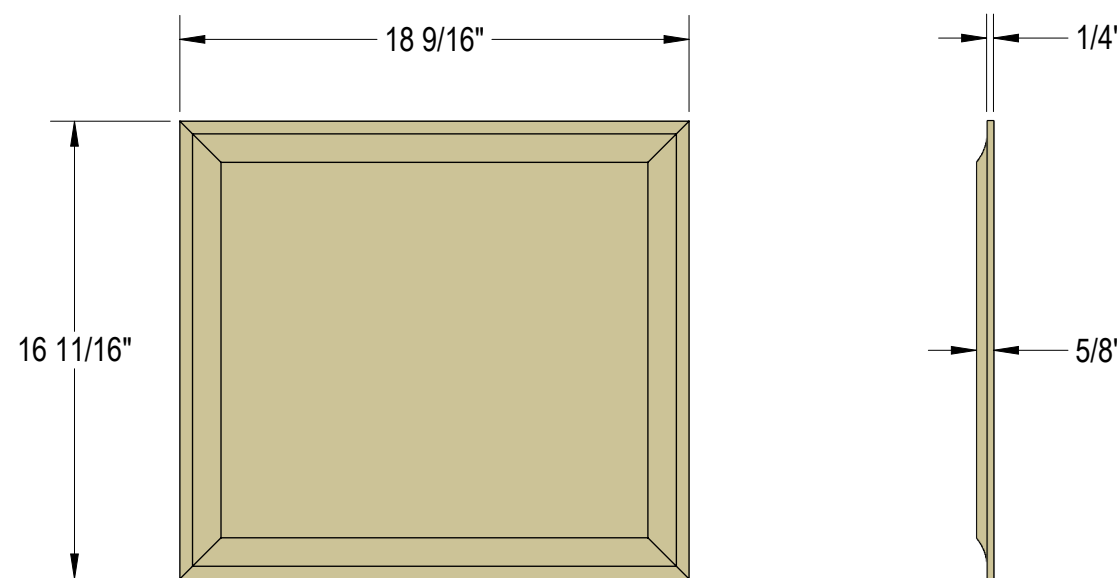


TONGUE PROFILE



PART: 24
MTR'L: 3/4" THICK HARDWOOD
QTY: 4

GROOVE PROFILE



PART: 25
MTR'L: 5/8" THICK HARDWOOD
QTY: 2

PROJECT NAME: CORNER CABINET SET AND RAISED PANEL DOORS
DRAWING NAME: RAISED PANEL DOOR PARTS

REV	DATE	BY	DESCRIPTION
00	9-30-2021	MP	INITIAL RELEASE

Woodshop Mike, LLC and it's affiliates are not responsible for any damages that may come to persons or properties involved during the creation or use of this project or plans. The use of these plans and construction of this projects is acknowledgement that you as the fabricator assume all liability for proper construction and safe use of the project through all stages.

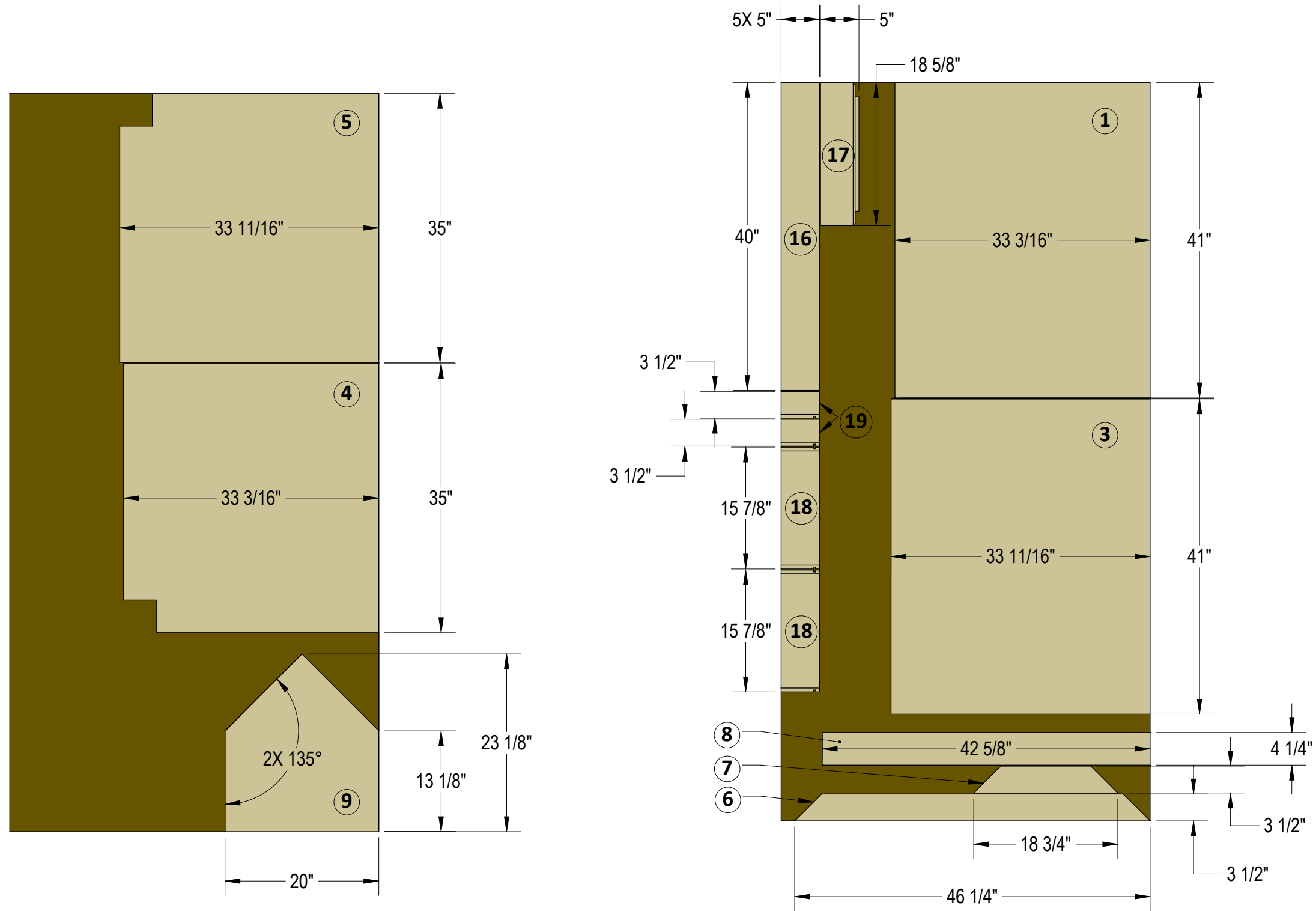
SHT. NO: 15

Reproduction of this document without the written authorization of Woodshop Mike, LLC is strictly prohibited Copyright 2021, Woodshop Mike, LLC

MTR'L: 1/2" PLYWOOD



www.woodshopmike.com
mike@woodshopmike.com



PROJECT NAME: CORNER CABINET SET AND RAISED
PANEL DOORS
DRAWING NAME: SHEET LAYOUT 1

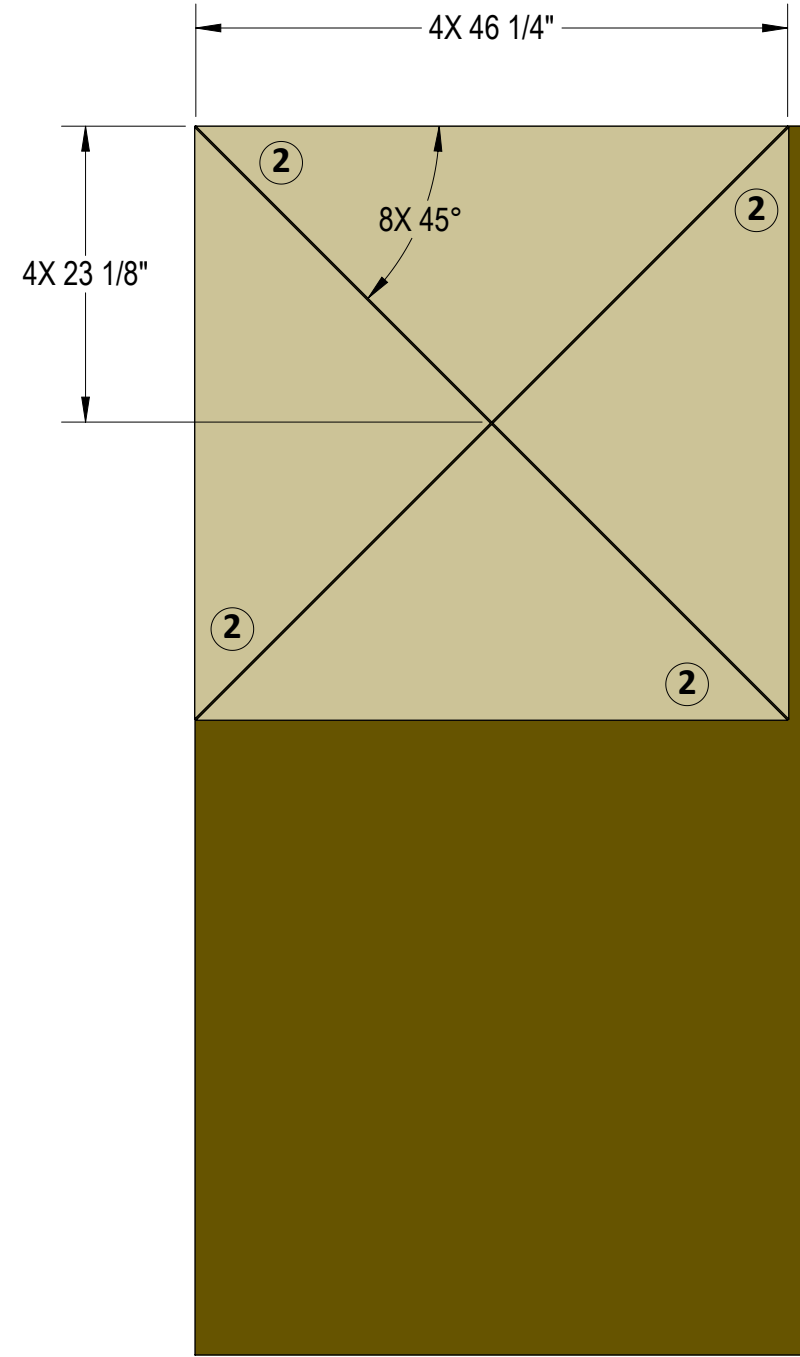
REV	DATE	BY	DESCRIPTION
00	9-30-2021	MP	INITIAL RELEASE

Woodshop Mike, LLC and it's affiliates are not responsible for any damages that may come to persons or properties involved during the creation or use of this project or plans. The use of these plans and construction of this projects is acknowledgement that you as the fabricator assume all liability for proper construction and safe use of the project through all stages.

SHT. NO:
16

Reproduction of this document without the written authorization of Woodshop Mike, LLC is strictly prohibited Copyright 2021, Woodshop Mike, LLC

MTR'L: 1/2" PLYWOOD



www.woodshopmike.com
mike@woodshopmike.com

PROJECT NAME: CORNER CABINET SET AND RAISED
PANEL DOORS
DRAWING NAME: SHEET LAYOUT 2

REV	DATE	BY	DESCRIPTION
00	9-30-2021	MP	INITIAL RELEASE

Woodshop Mike, LLC and it's affiliates are not responsible for any damages that may come to persons or properties involved during the creation or use of this project or plans. The use of these plans and construction of this projects is acknowledgement that you as the fabricator assume all liability for proper construction and safe use of the project through all stages.

SHT. NO:
17

Reproduction of this document without the written authorization of Woodshop Mike, LLC is strictly prohibited Copyright 2021, Woodshop Mike, LLC