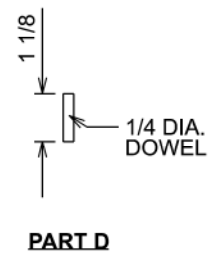
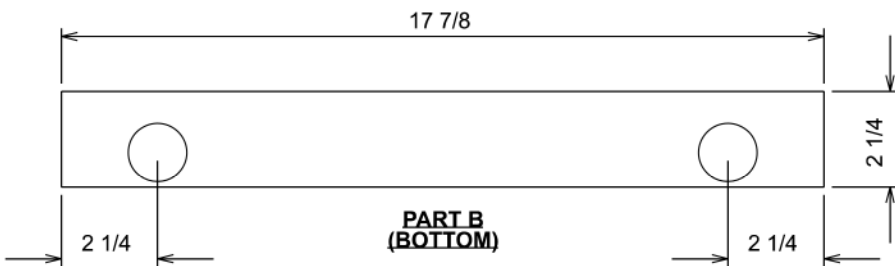
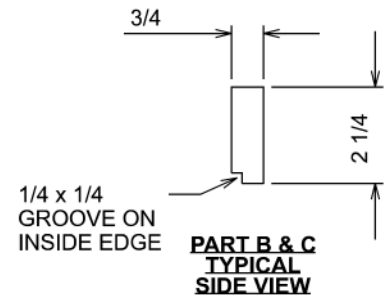
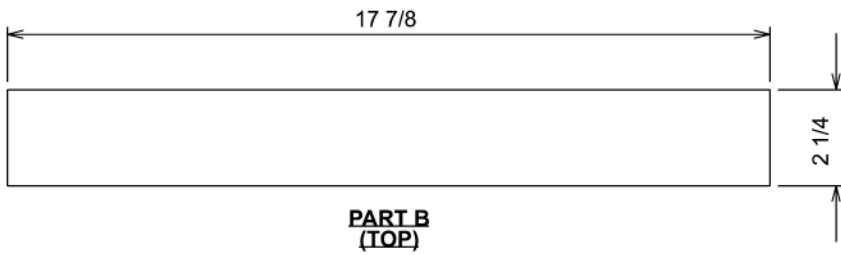
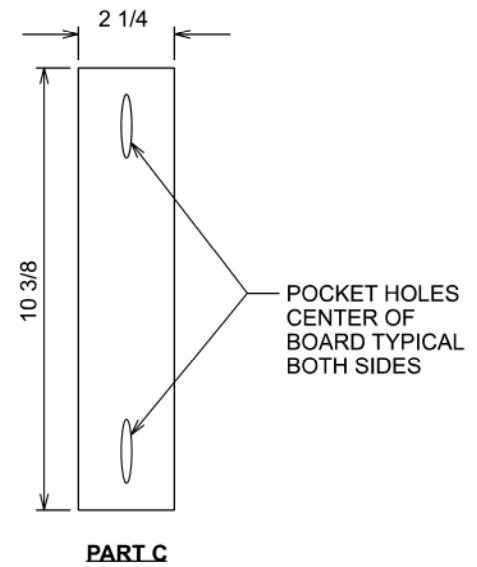
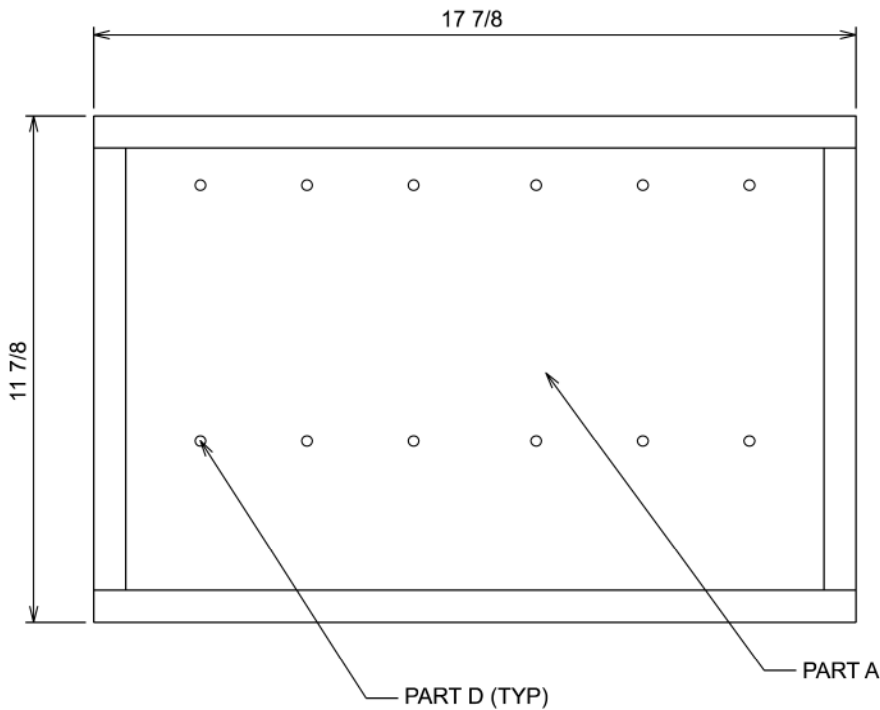
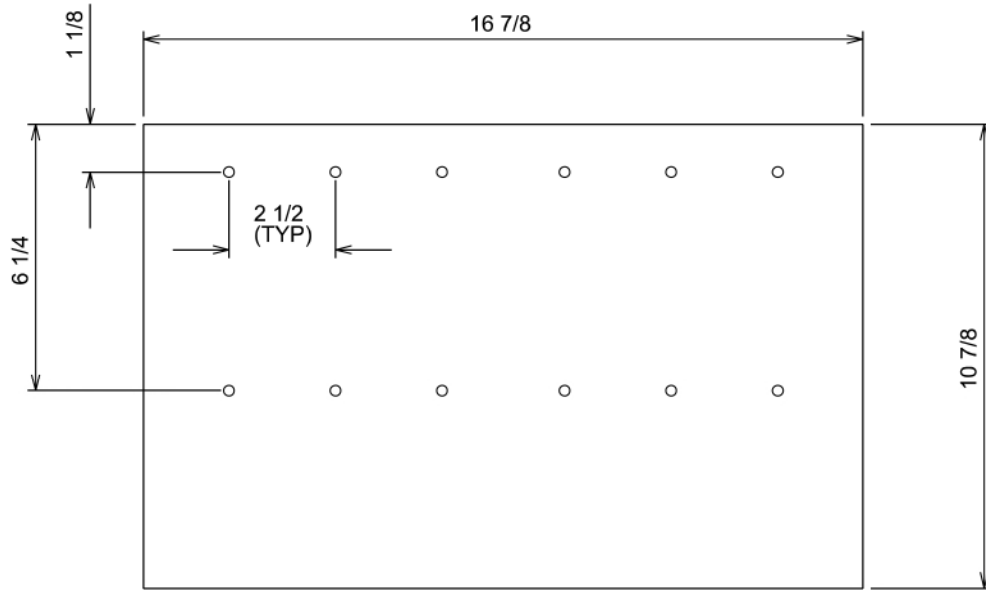
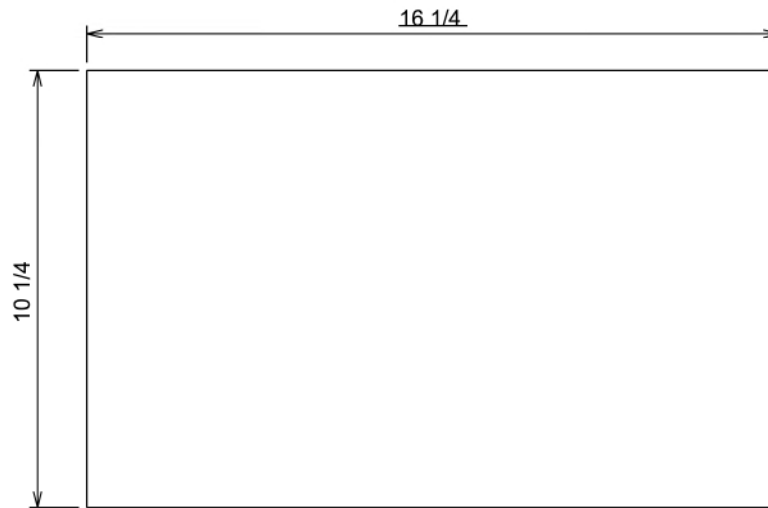


HIDDEN KEY HOLDER





PART A



PART E



Part	Description	Quantity	Material	Detail
A	Back board	1	1/4" Maple Veneer Plywood	Page 2
B	Top and Bottom Boards	2	3/4" Thick Maple	Page 1
C	Side Boards	2	3/4" Thick Maple	Page 1
C	Dowels	12	Wooden Dowels	Page 2
E	Front Board	1	5/8" MDF	Page 2

Quantity	Materials	Notes
2	Concealed Hinges	we used left over Ikea hinges, but any concealed hinge will work *you should confirm jig offset based on hinge type*
1	1x6 Maple Board x 31" long	used for Parts B and C
1	1/4 Thick Maple Veneer Plywood	used for Part A
1	16" of 1/4" Dia. Wooden Dowel	used for Part D
1	17" x 11" 5/8" MDF	used for Part E
1	Sign	We had a sign from: https://www.giftsforyounow.com/personalize-my-garage-man-cave-metal-sign-676364.aspx however any sign could be used and you can adjust the box size based on chosen sign
-	Wood Glue	
-	Primer Paint	we used Zinsser® Bulls Eye 1-2-3® Water-Base Primer
-	White paint	we used Zinsser® Bulls Eye 1-2-3® Water-Base Primer
-	Stain	we used Rust-Oleum® Wood Care Ultimate Wood Stain Ebony
-	Varnish	we used Varathane Professional Clear Finish Satin