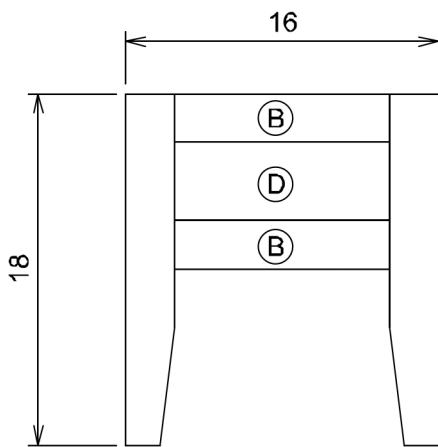
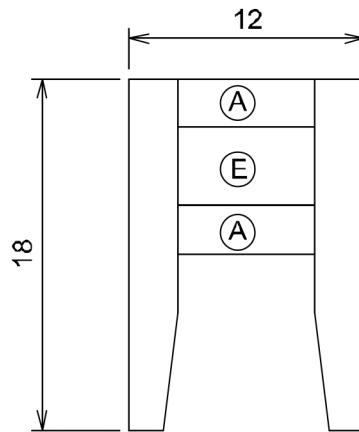


BATHROOM STOOL

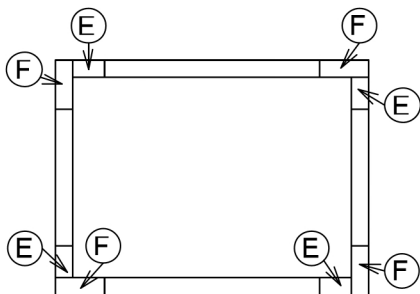
BUILD PLANS



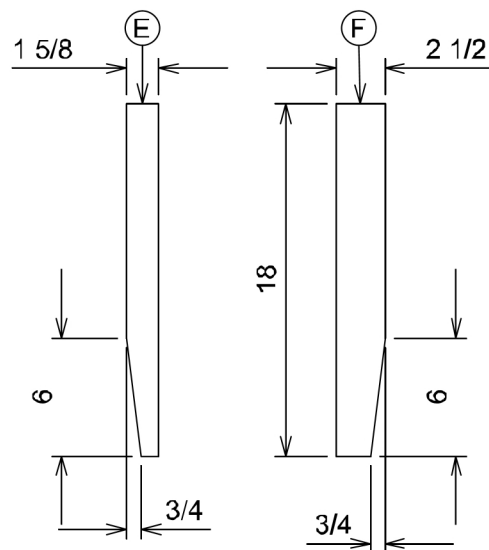
BENCH FRONT VIEW



BENCH SIDE VIEW



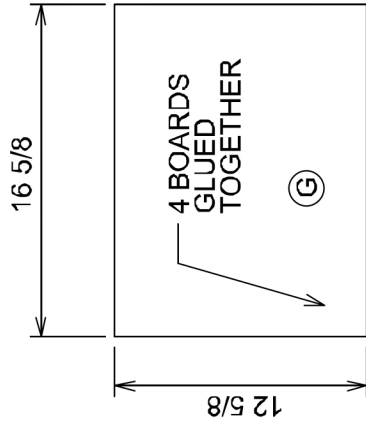
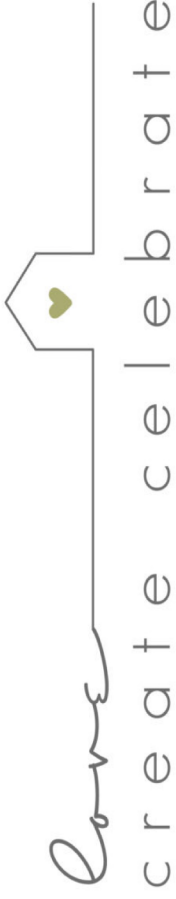
LEG LAYOUT / GLUING
DETAIL



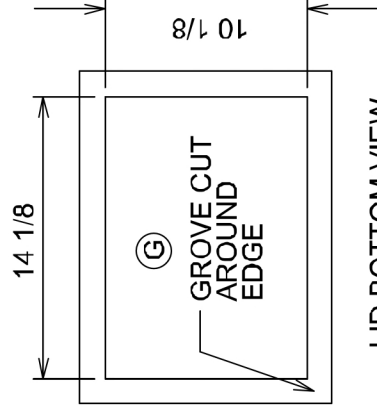
LEG DETAIL

BATHROOM STOOL

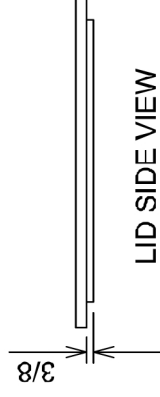
LID, PANEL, AND SLAT DETAILS



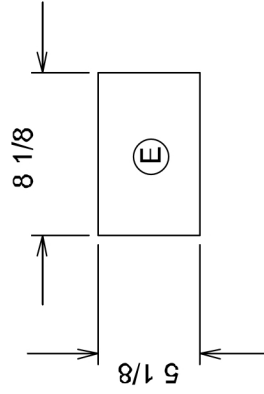
LID TOP VIEW
PART "G"



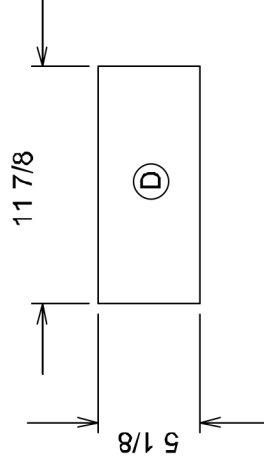
LID BOTTOM VIEW
PART "G"



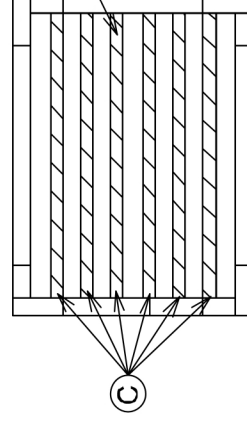
LID SIDE VIEW



PART "E" DETAILS



PART "D" DETAILS

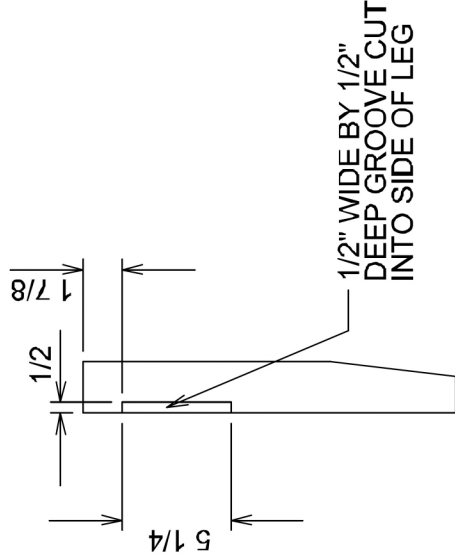


BOTTOM SHELF SLATS DETAIL
(LOOKING FROM ABOVE)

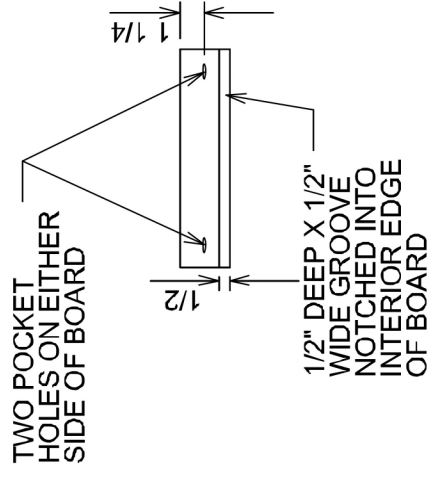
SIX 7/8" THICK X 5/8"
WIDE X 14 1/4" LONG
WITH 1/8" DIA. RADIUS
ALONG EDGES EVENLY
SPACED IN OPENING
(APPROX 7/8 - 1" GAP
BETWEEN SLATS)
GLUED IN PLACE

BATHROOM STOOL

GROOVE DETAILS



TYPICAL LEG GROOVE DETAIL FOR "E" AND "F"



TYPICAL "A" AND "B" DETAIL

Component	Quantity	Description	Material	Dimensions	*Notes*
A	4	Side Rails	1" rough stock teak	7/8" thick X 2 1/2" wide X 7" long	
B	4	Side Rails	1" rough stock teak	7/8" thick X 2 1/2" wide X 11" long	
C	6	Bottom shelf slats	1" rough stock teak	7/8" thick X 5/8" wide X 14 1/2" long	* Cut down to exact size prior to being installed. All four 14 1/2" long edges have 1/8" dia. Radius using router.
D	2	Front panel	1" rough stock teak	3/8" thick X 11 7/8" long X 5 1/8" tall	one piece of 1" thick rough stock teak cut in half to 3/8" (makes 2 pieces)
E	2	Side Panel	1" rough stock teak	3/8" thick X 8 1/8" long X 5 1/8" tall	one piece of 1" thick rough stock teak cut in half to 3/8" (makes 2 pieces)
F	4	Leg - full	1" rough stock teak	7/8" thick x 18" long x 2 1/2" wide	
G	4	Leg - part	1" rough stock teak	7/8" thick x 18" long x 1 5/8" wide	
H	4	Top Boards	1" rough stock teak	7/8" thick x 16.5" long x 3 1/8" wide	* cut down to 16 1/2" once all 4 boards glued together and sanded smooth