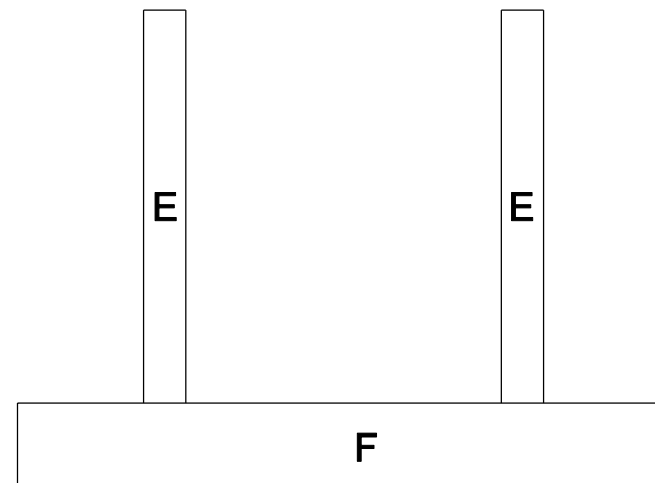
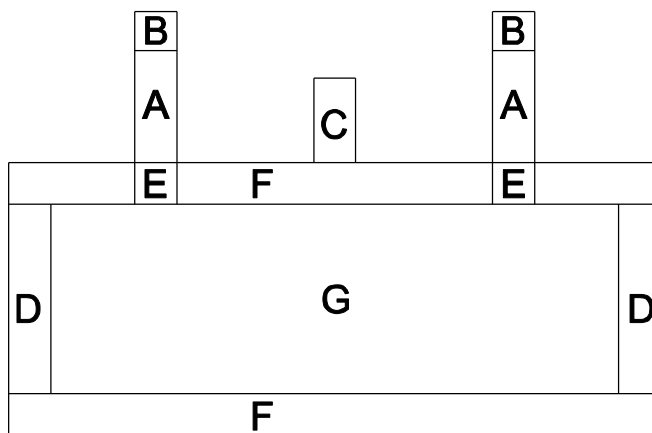
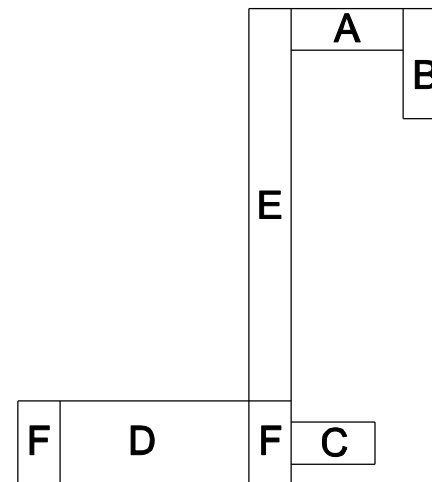
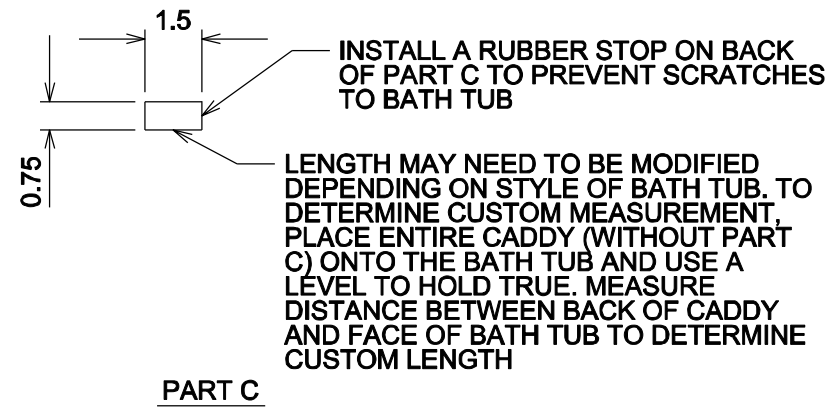
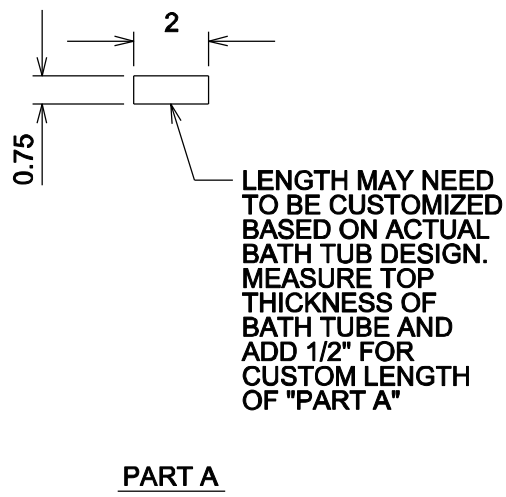
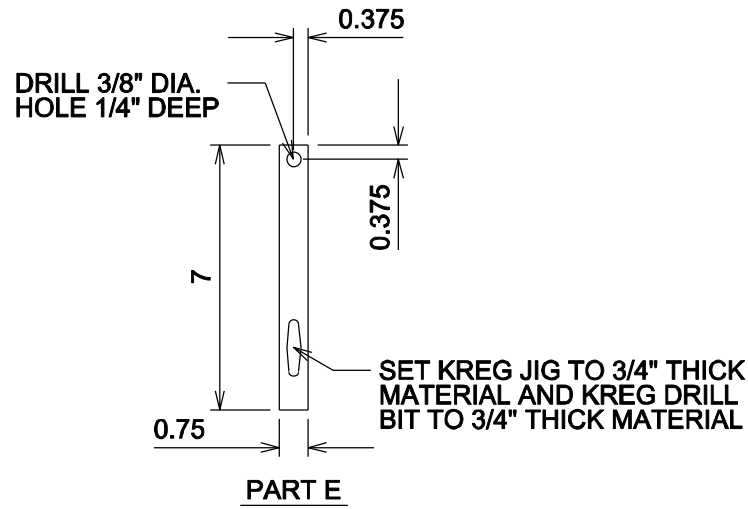
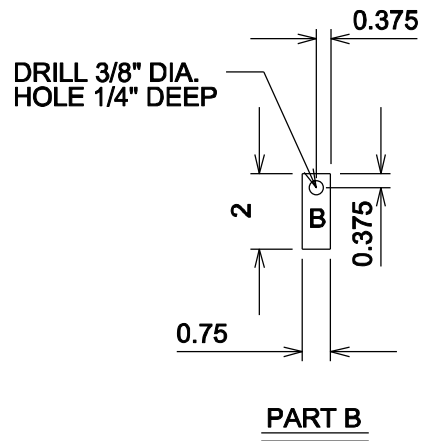


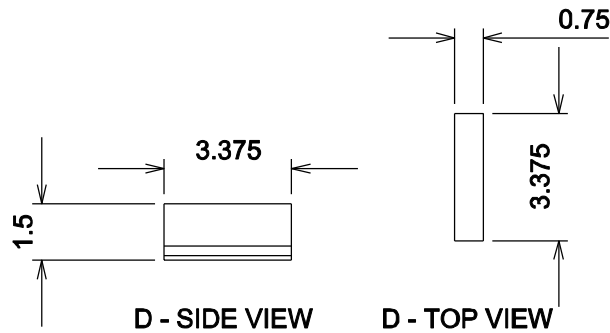
# BATH CADDY



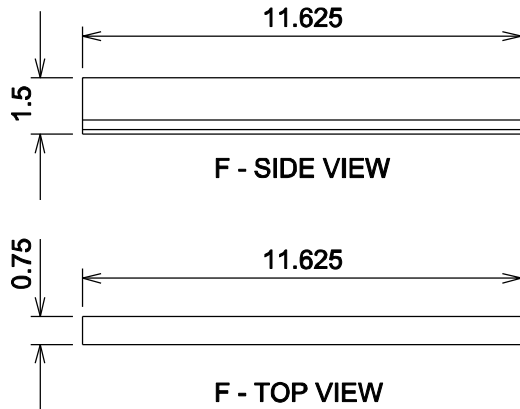
<https://lovecreatecelebrate.com/>







PART D



PART F

1/4" THICK x 1/4" DEEP  
GROVE CUT INTO INSIDE  
EDGE OF PART(S) F + D.  
GROOVE 1/8" OFF THE  
BOTTOM OF PART

PART F + D  
END VIEW

NTS

#### CUT LIST

Part	Quantity	Length (inch)	width (inch)	height (inch)	Description
A	2	2	0.75	0.75	horizontal part of "hook" (length may need to be customized based on tub design)
B	2	2	0.75	0.75	vertical part of "hook"
C	1	1.5	0.75	0.75	leveler (length may need to be customized based on tub design)
D	2	3.375	0.75	1.5	side of caddy
E	2	7	0.75	0.75	hook arm
F	2	11.625	0.75	1.5	face of caddy
G	1	12	3.75	0.1875	caddy floor

#### TOOLS

table saw  
compound mitre saw  
sander  
router table  
measure tape  
clamps  
mixing cups  
popsicle sticks  
hammer  
Kreg K5 jig (or similar)  
Kreg stepped bit  
drill

#### MISC HARDWARE / SUPPLIES

1/4" flush cut router bit  
wood glue  
sand paper  
stain  
varnish  
finishing nails  
6 screws  
4" 3/8 dowel  
2 Kreg wood (pine) plugs  
resin \*optional based on use of tile  
PL Premium \*optional based on use of tile

#### MATERIAL LIST

Quantity	Description
26 inches	3/4" x 3/4" board
34 inches	1.5" x 3/4" board
1	12" x3.75" x 3/16 thick plywood
10	black hexagon tiles (approx. 2 1/4" x 1 7/8") *optional