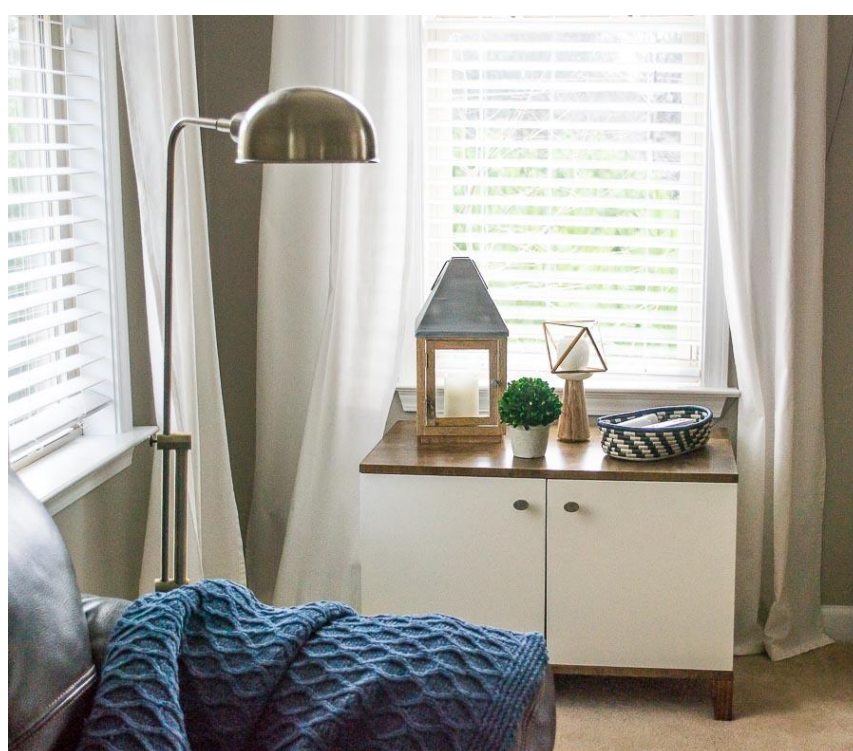


West Elm Knock Off Media Cabinet

Difficulty
Moderate

Make a media cabinet to fit perfectly underneath your family room windows. It is a really easy build and the two tone look gives it the high end look.



Tools

Kreg Tools



Other Tools

Miter Saw

Square

Table Saw

Tape Measure

Clamps

Drill (corded)

Sander

Materials

Wood Products

1 Plywood , 3/4" Thick , 96"

1 Board , 2x4 , 24"

1 Plywood , 1/4" Thick , 36"

Hardware & Supplies

4 Euro Hinges

2 Knobs

Cut List & Parts

- 2 Top & Bottom , 3/4" X 31" X 19"
- 2 Sides , 3/4" X 16" X 18"
- 1 Shelf , 3/4" X 29 1/2" X 18"
- 2 Doors , 3/4" X 16" X 15 7/16"
- 1 Back , 1/4" X 31" X 16"
- 4 Legs (Cut At A 10 Degree Angle) , 2" X 4" X 4"

Directions

1

Pocketholes

1. Drill pocketholes into the sides on the 16" side both at the top and bottom. Repeat for the other side.



2

Pocketholes in the Shelf

2. Drill pocketholes into the shelf on the 18" side on both the left and right side of the piece of wood.

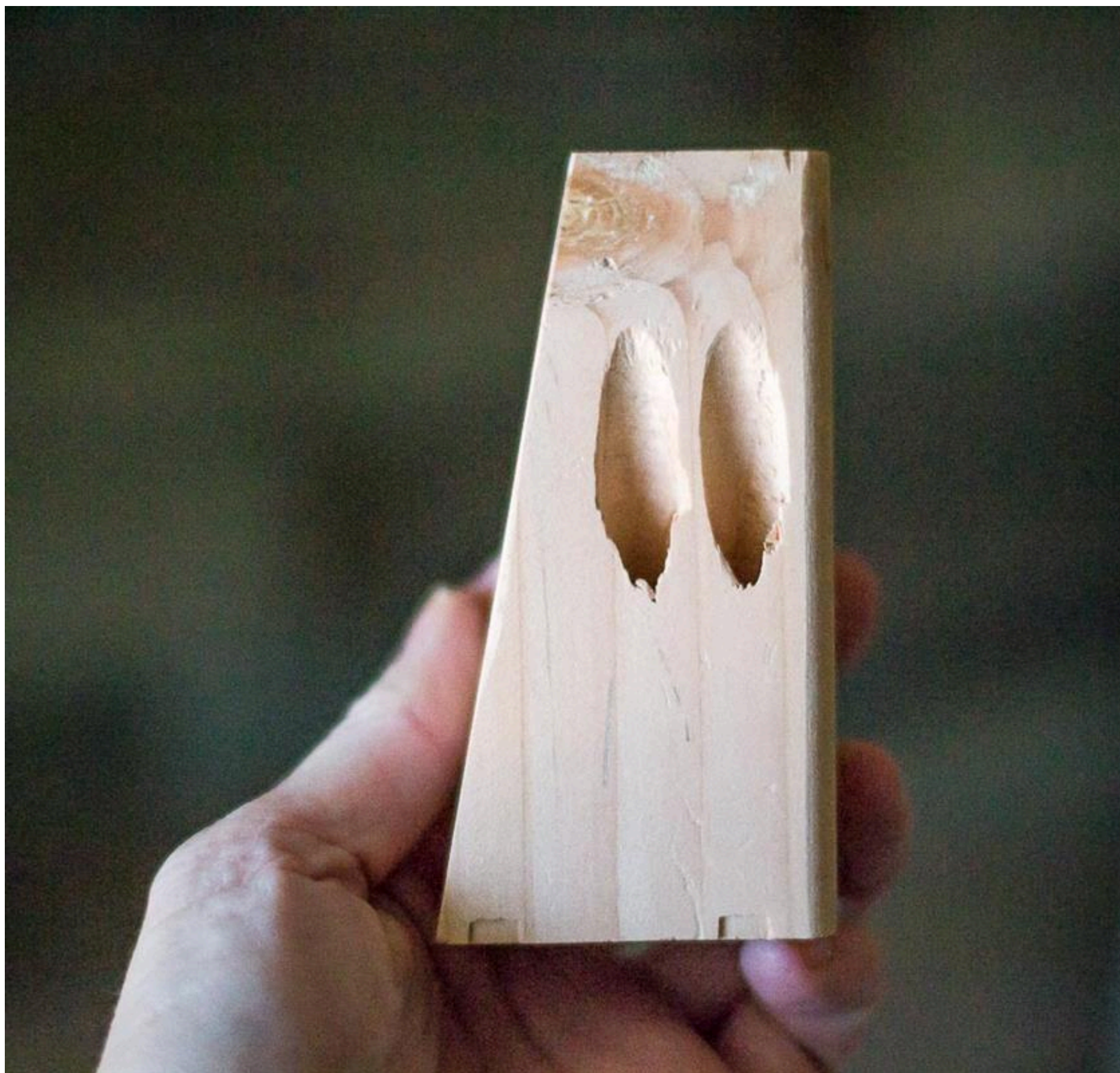
3**Legs**

3. To cut the legs take a 2 x 4 scrap and cut a 10 degree angle. Then cut a 4" leg. Repeat that three more times.



4**Leg Pocketholes**

4. Drill 2 pocketholes into the legs going from the shorter edge into the longer edge.



5**Veneer Edging**

5. Add veneer edging to all of the plywood edges that will be shown using an iron. Use a veneer trimmer to clean up the edges.

**6****Shelf Placement**

6. Drill your shelf into the height that you want it.

7**Euro Hinges**

7. Drill your holes for your euro hinges using a euro hinge jig.

8**Assembling Cabinet**

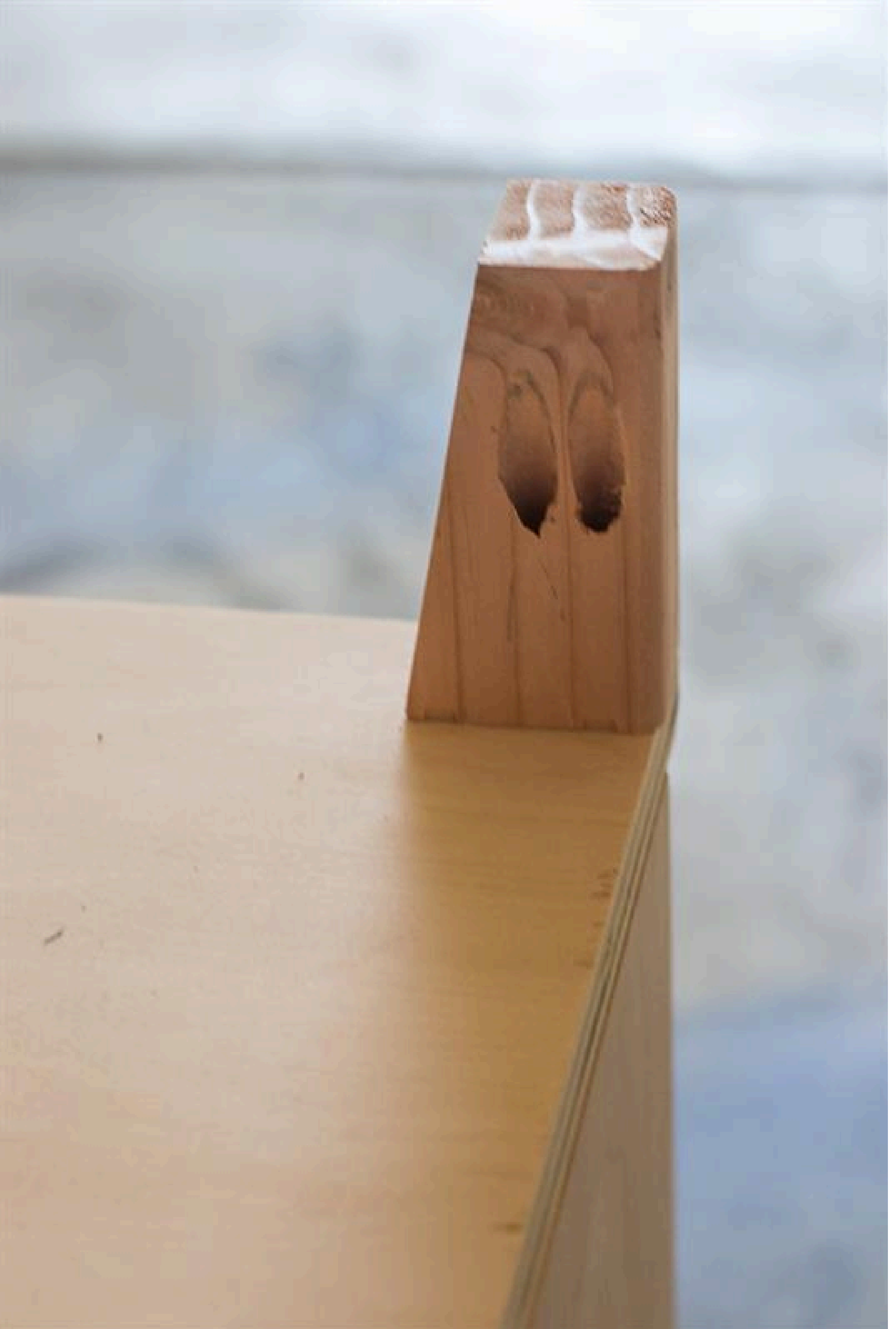
8. To assemble the cabinet drill the sides into the top and bottom inseting them in 1/4" from the back and 3/4" from the front.



9

Adding Feet

9. Flip your cabinet over and add your feet to the bottom making sure the pocketholes are facing the back.



10**Doors**

10. Add your doors. Drill your holes for your knobs.

