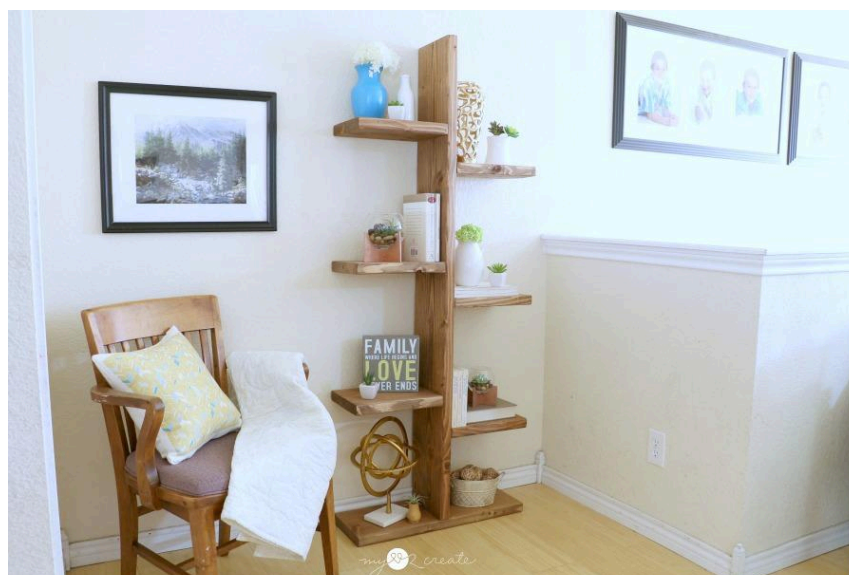
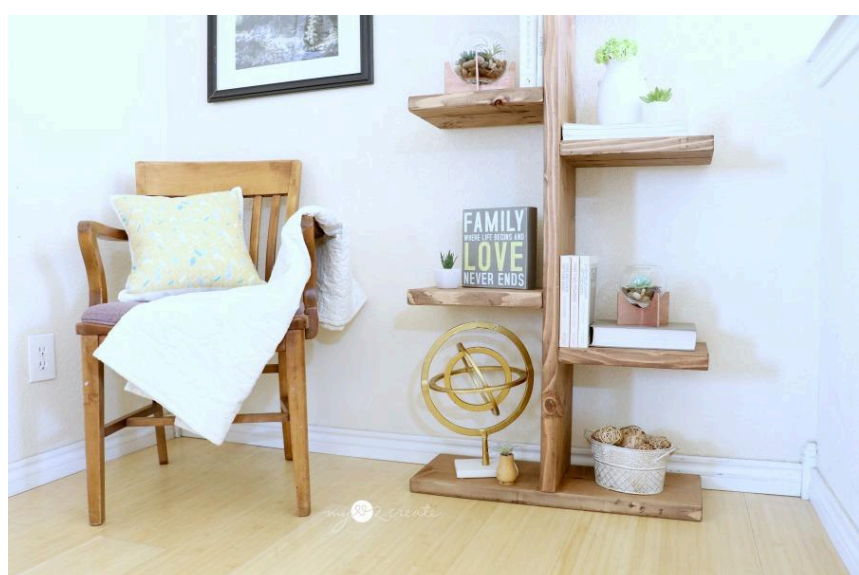
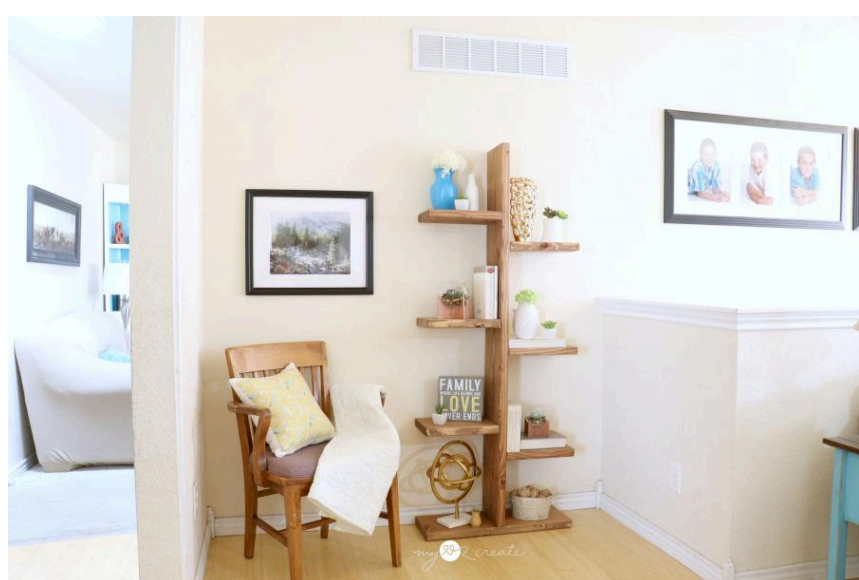


Open Shelf

Difficulty
Easy

Add the perfect decorative accent to your home with this unique open shelf, great for displaying books, plants, or your favorite home decor. This fast and easy beginner DIY build will look great in any space!



Tools

Kreg Tools

 [Wood Project Clamp - 6"](#)

 [Kreg® Pocket-Hole Jig 720](#)

Other Tools

Miter Saw

Square

Tape Measure

Drill (cordless)

Impact Driver

Sander

Materials

Wood Products

2 Board , 2x10 , 96"

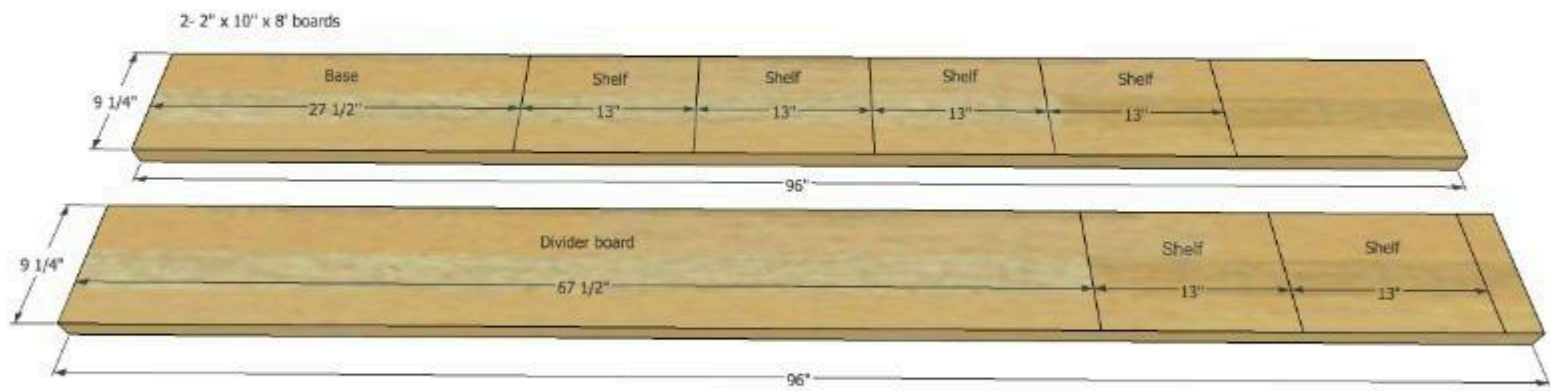
Hardware & Supplies

28 2 1/2" Pocket Hole Screws

1 Paint Or Stain Of Choice

Cut List & Parts

- 1 Base , 1 1/2" X 9 1/4" X 27 1/2"
- 1 Divider Board , 1 1/2" X 9 1/4" X 67 1/2"
- 6 Shelves , 1 1/2" X 9 1/4" X 13"

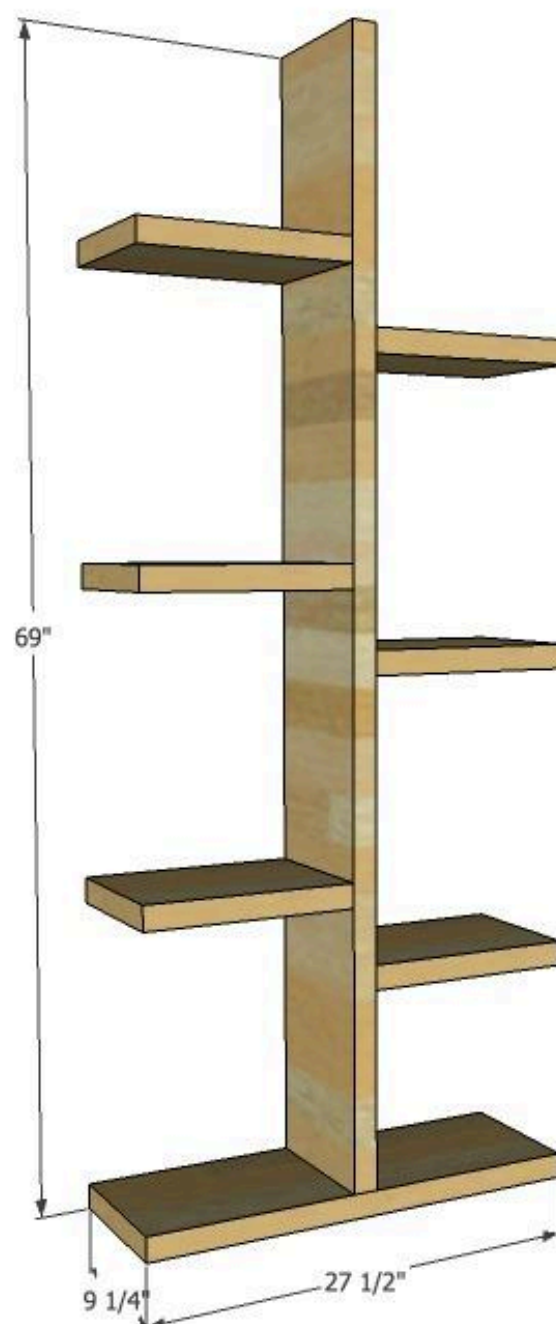


Directions

1**Cut Wood**

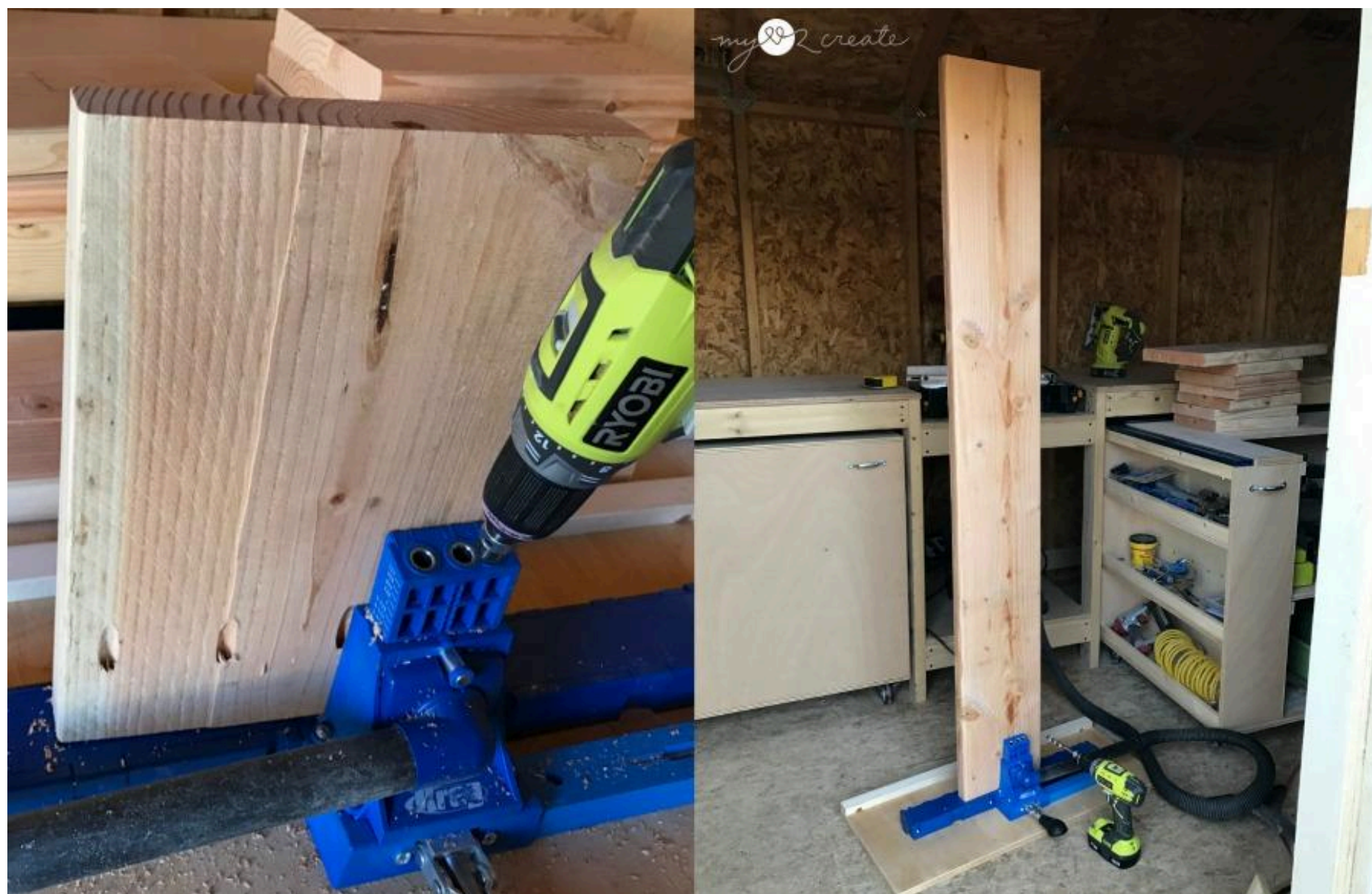
Using a miter saw cut your wood to the specified sizes.

OPEN SHELF DIMENSIONS

my create

2**Drill pocket holes**

Drill 2 1/2" pocket holes. Each shelf board will need 4 pocket holes on ONE side. The divider board will need 4 pocket holes alternating two on each side.



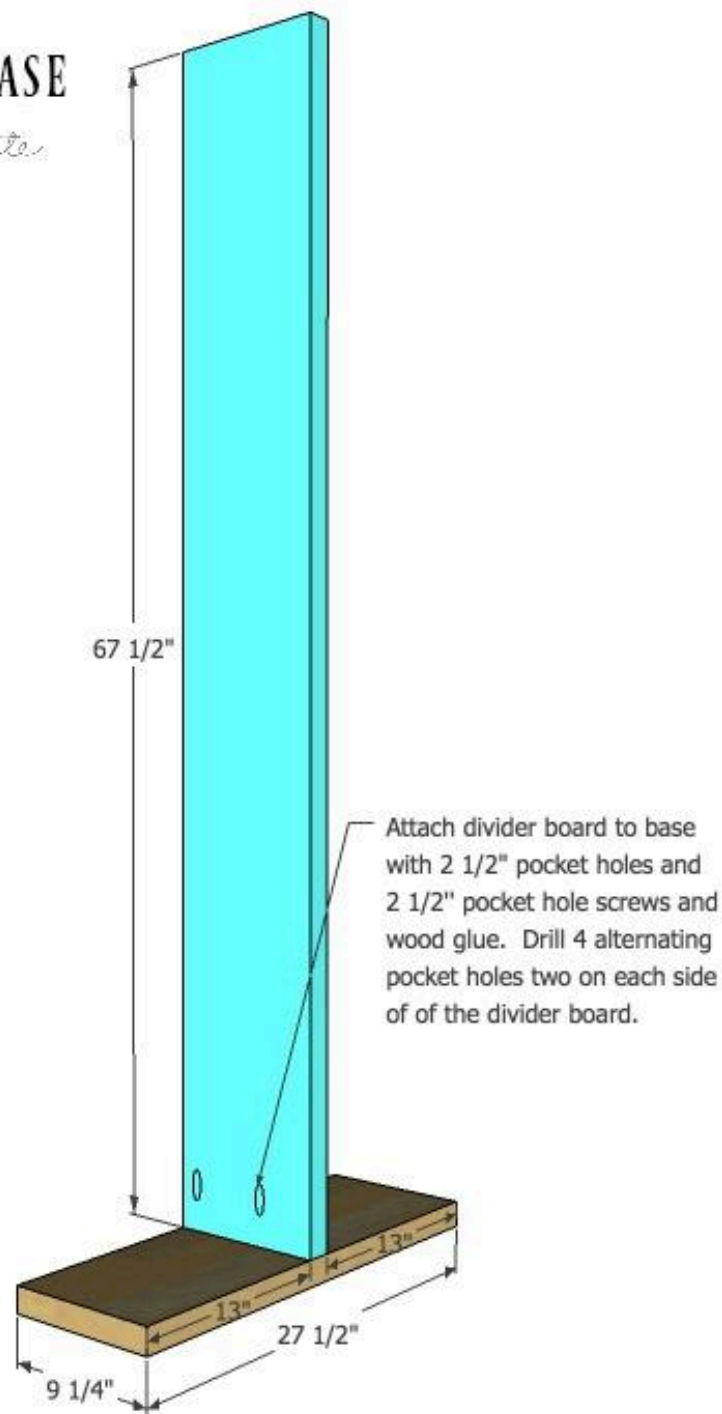
3

Attach divider board to base

Using 2 1/2" pocket hole screws and wood glue attach the divider board to the center of the base.

ATTACH DIVIDER BOARD TO BASE

my2create



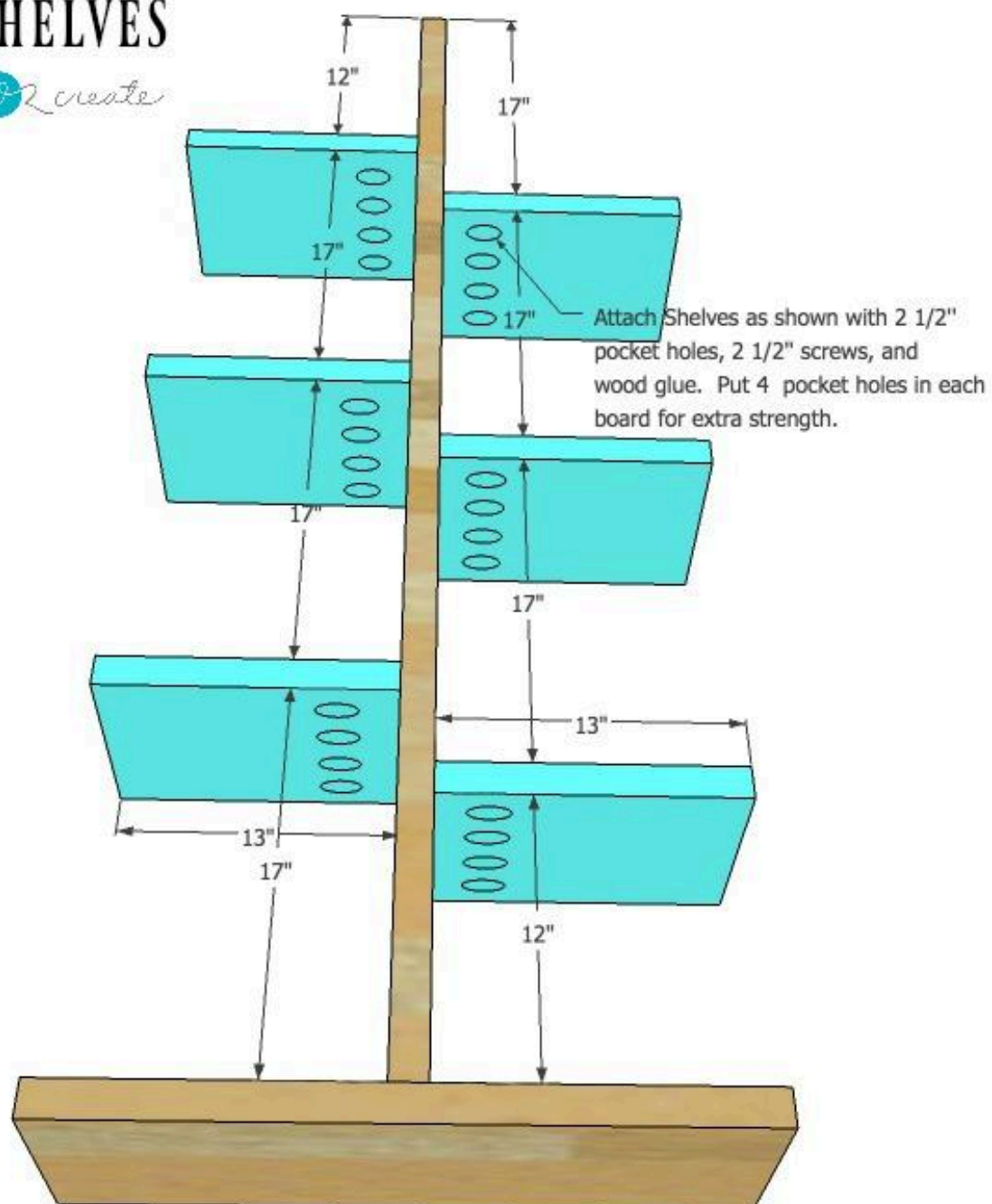
4

Attach shelves to divider board

Using 2 1/2" pocket hole screws and wood glue attach the shelves to the divider board as shown. For easy placement use scrap spacer boards, one cut at 12" and one at 17". Use a right angle clamp or a bar clamp to hold the shelf in place while drilling in the screws.

ATTACH SHELVES

my 2 create



5

Finish

Fill desired pocket holes with wood filler or pocket hole plugs, then sand smooth and clean off the dust. Apply the paint or stain of your choice. Then enjoy!

*Recommend: No more than 20 lbs per shelf. If you are worried about stability you can add an L bracket underneath a shelf at the back and attach it to the wall for safety. I have not had any issues with my shelf feeling unstable, but it would be an easy fix if you are concerned.

