

# Modern Bike Rack

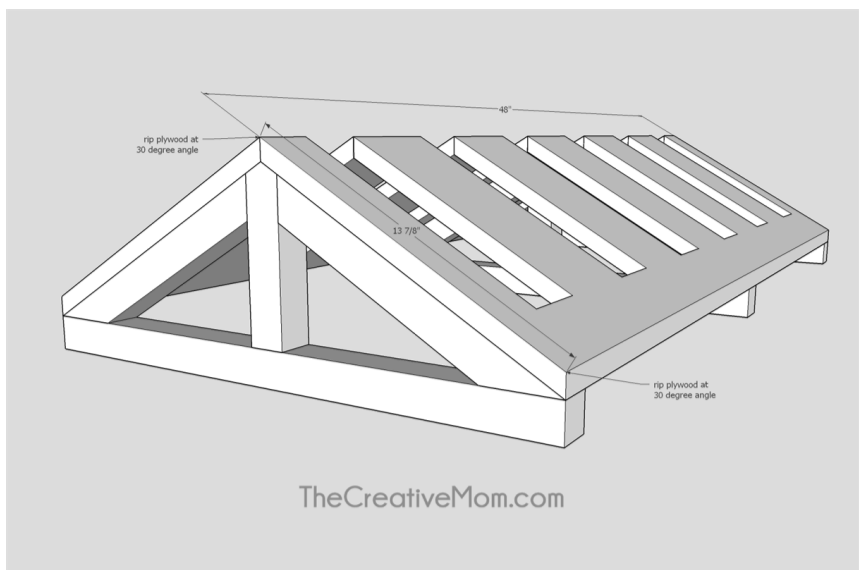
By **The Creative Mom**

Difficulty

Easy

This minimalist bike rack is a modern solution for parking and storing bikes. This is a really quick and simple build. It only takes a couple of hours, basic tools, and about \$30 in materials to build.





## Tools

### Kreg Tools



[Accu-Cut™](#)



[Kreg® Pocket-Hole Jig 720](#)

### Other Tools

Circular Saw (cordless)

Jigsaw

Tape Measure

Impact Driver

Nail Gun

## Materials

### Wood Products

**2** Board , 2x2 , 96"

**1** Plywood , 1/2" Thick , Half Sheet

### Hardware & Supplies

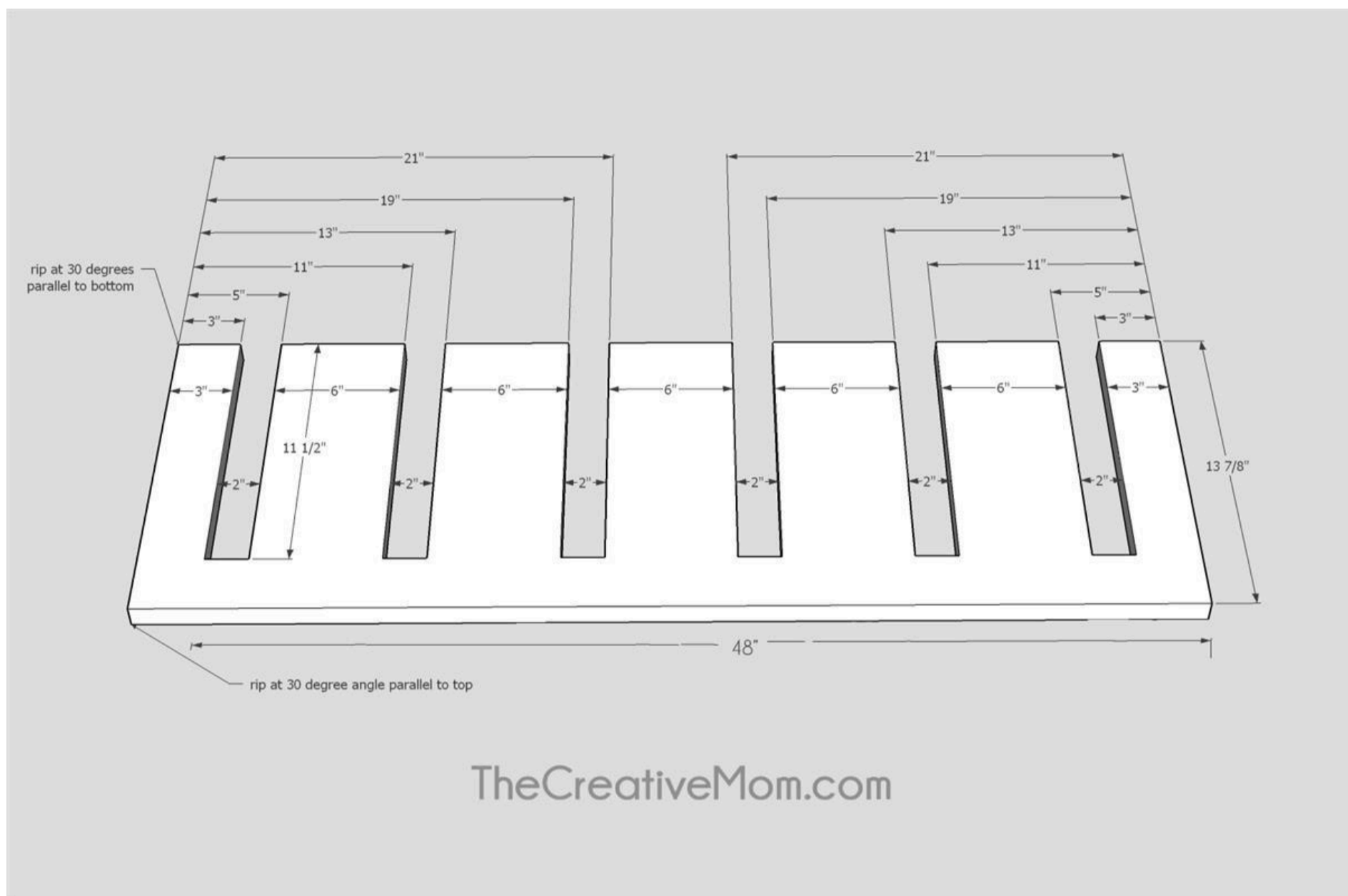
**30** 1 1/4" Pocket Hole Screws

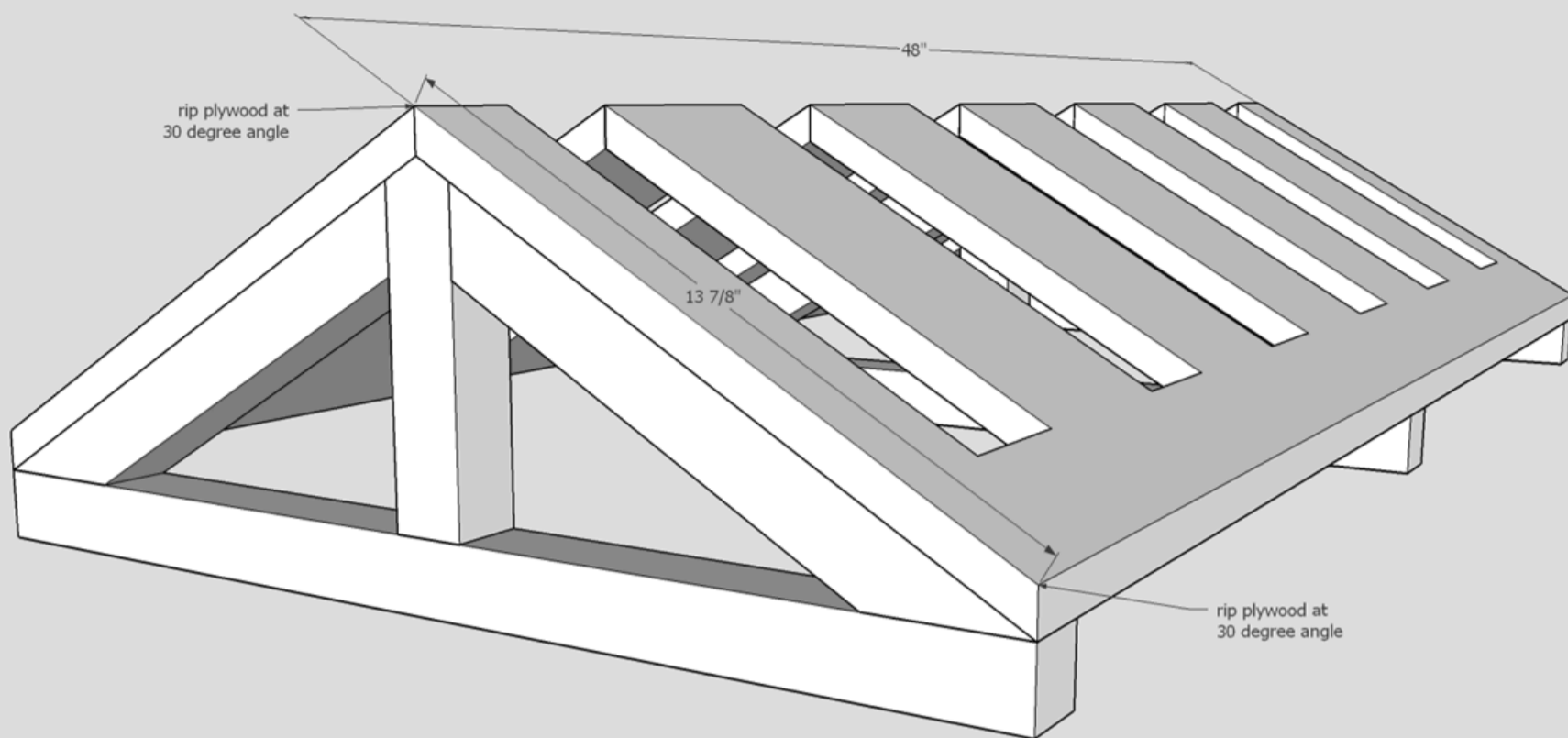
**30** 1" Brad Nails

**1** Wood Glue

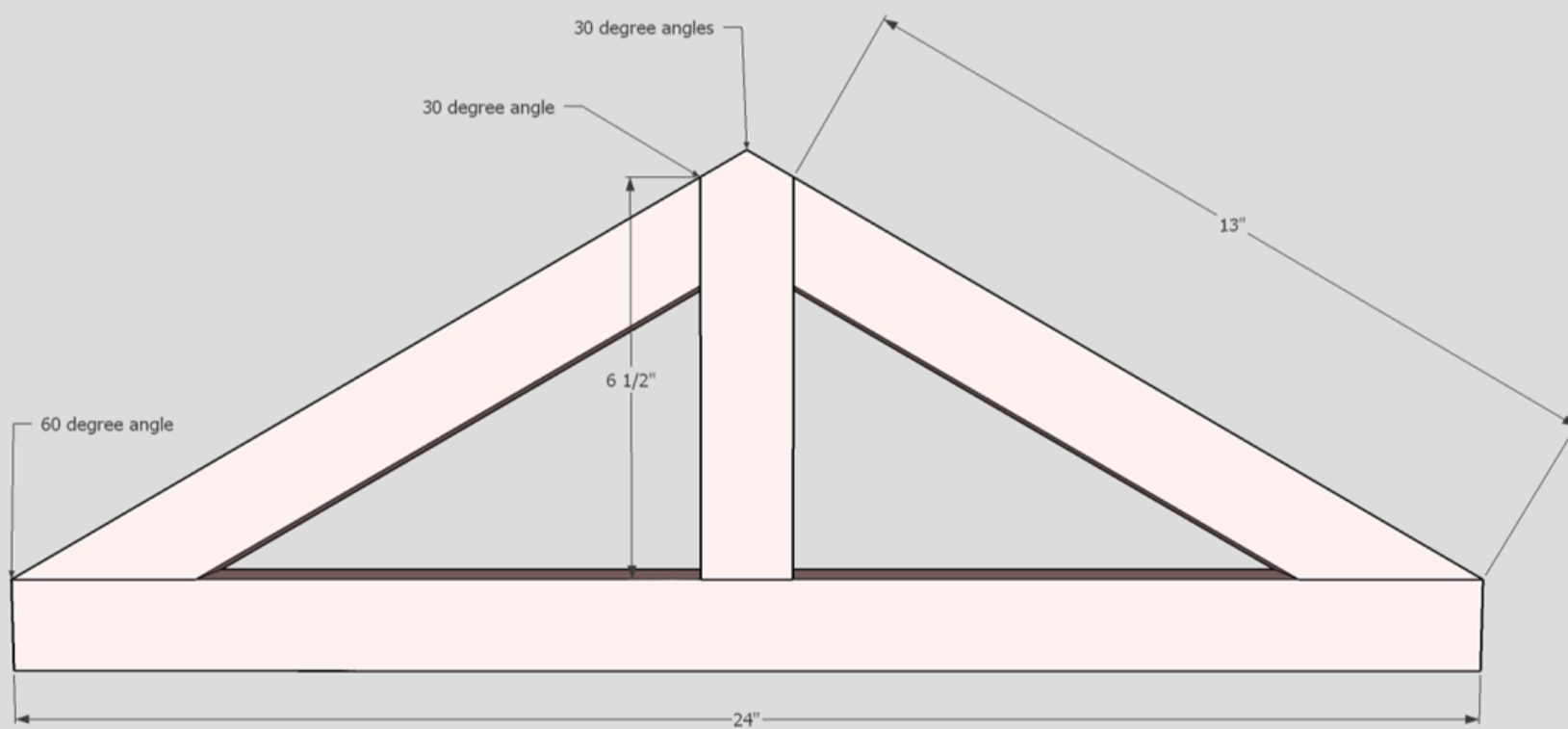
# Cut List & Parts

- 3 Vertical Supports , 7" 2x2's Cut At 30 Degree Point On One End
- 3 Horizontal Supports , 24" 2x2's
- 6 Diagonal Supports , 13" 2x2's Cut At 30 Degrees On One End And 60 Degrees On The Other End
- 2 Plywood Sheets , 1/2" Thick, 13 7/8 X 48" Ripped At 30 Degrees





TheCreativeMom.com



TheCreativeMom.com

# Directions

**1**

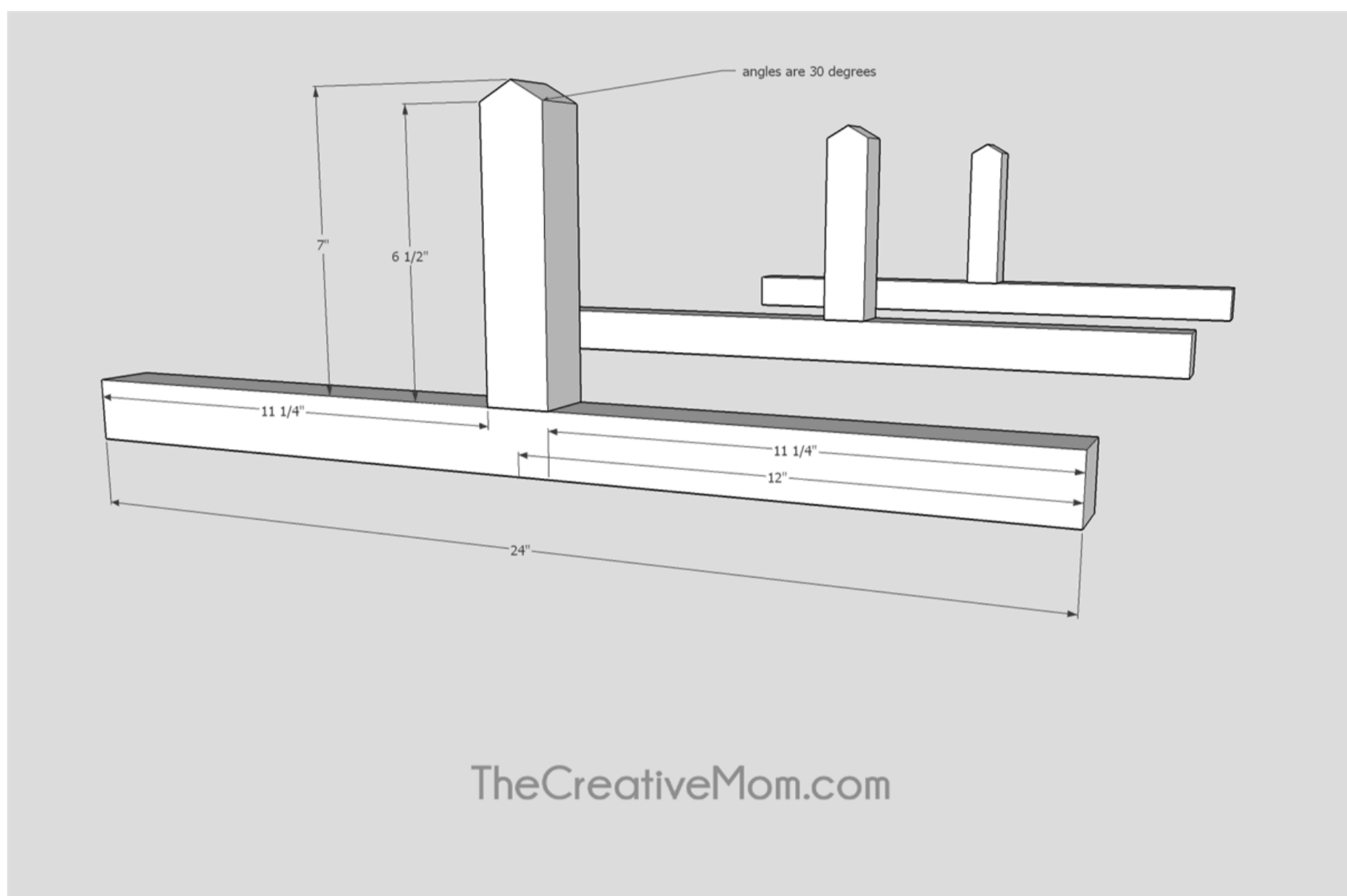
## Assemble Supports

Cut 3- 24" 2x2's and 3- 7" 2x2's.

The 7" 2x2's will be cut to a point at one end, using 30 degree angles. (see plans).

Use the Kreg Jig to drill pocket holes on the square end of your 7" board. Using wood glue and 1 1/4" pocket hole screws, attach the 7" board to the center of the 24" board.

You will need three of these supports.

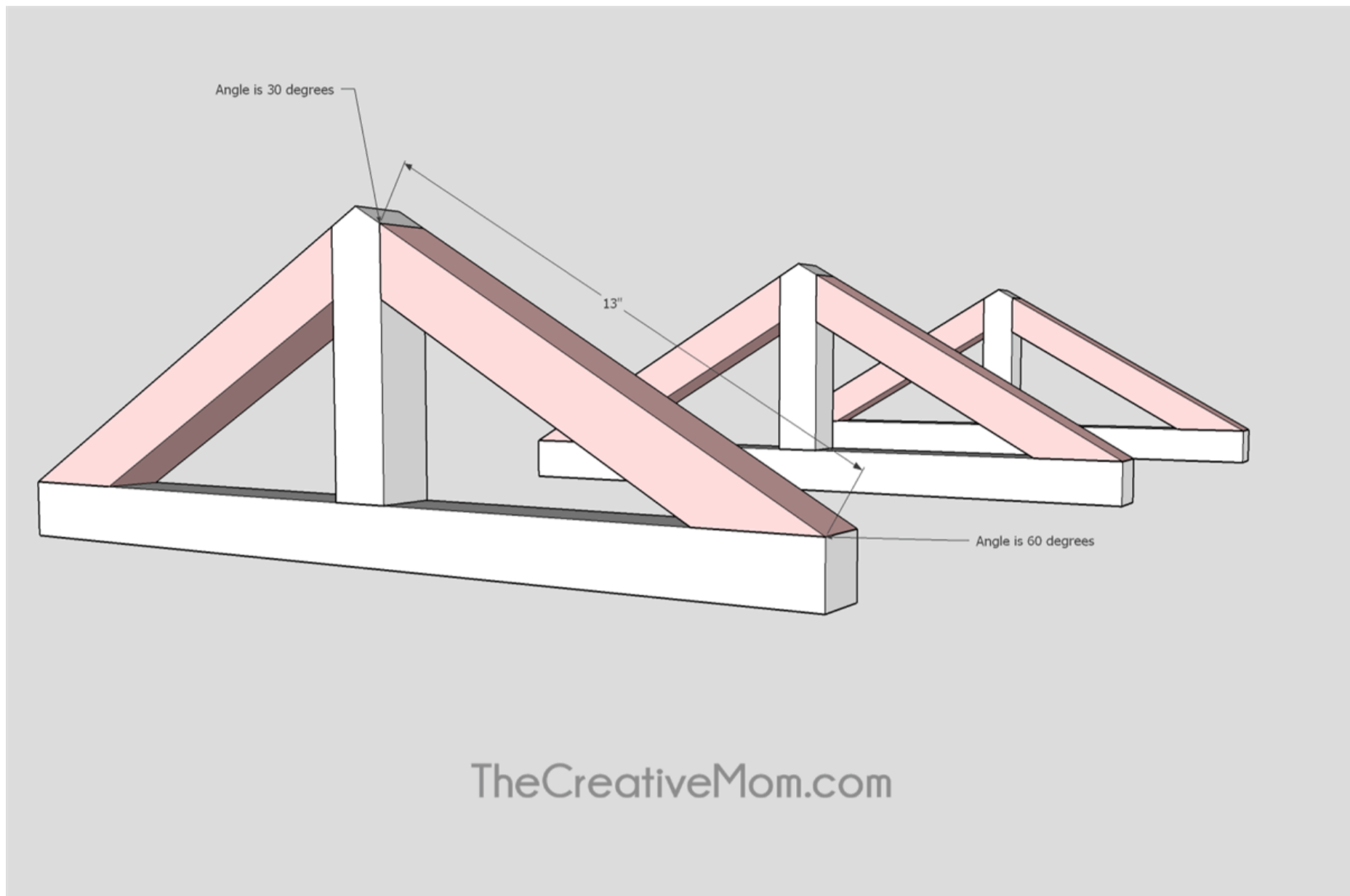


## 2

### Add Diagonal Supports

Cut 6- 13" 2x2's. The boards will be cut at 30 degrees on one end and 60 degrees on the other end. (see plans)

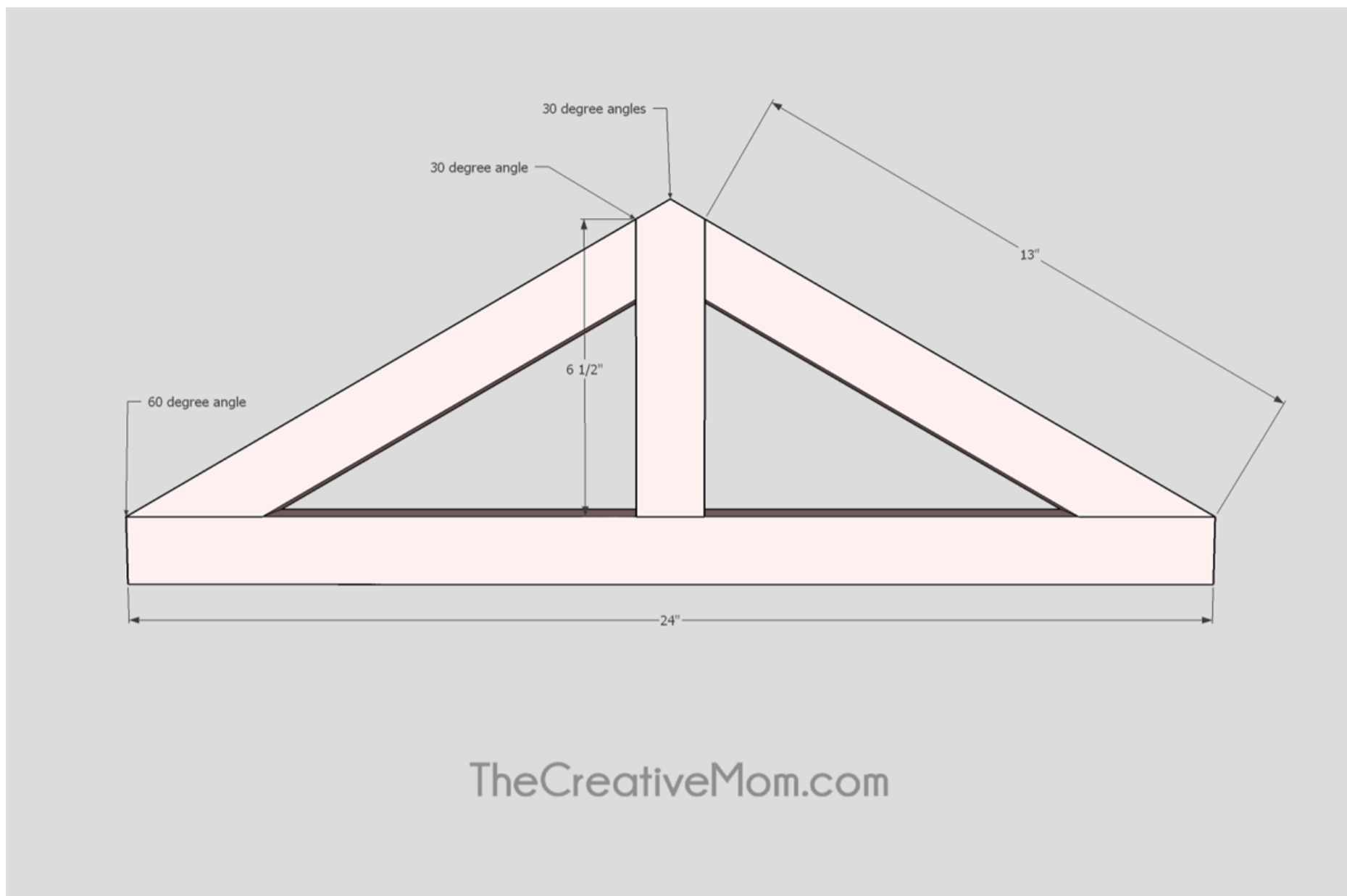
Using wood glue and 1 1/4" pocket hole screws, attach these boards to the supports you built in step 1.



### 3

### Finished supports

This image shows what the supports should look like.





**4**

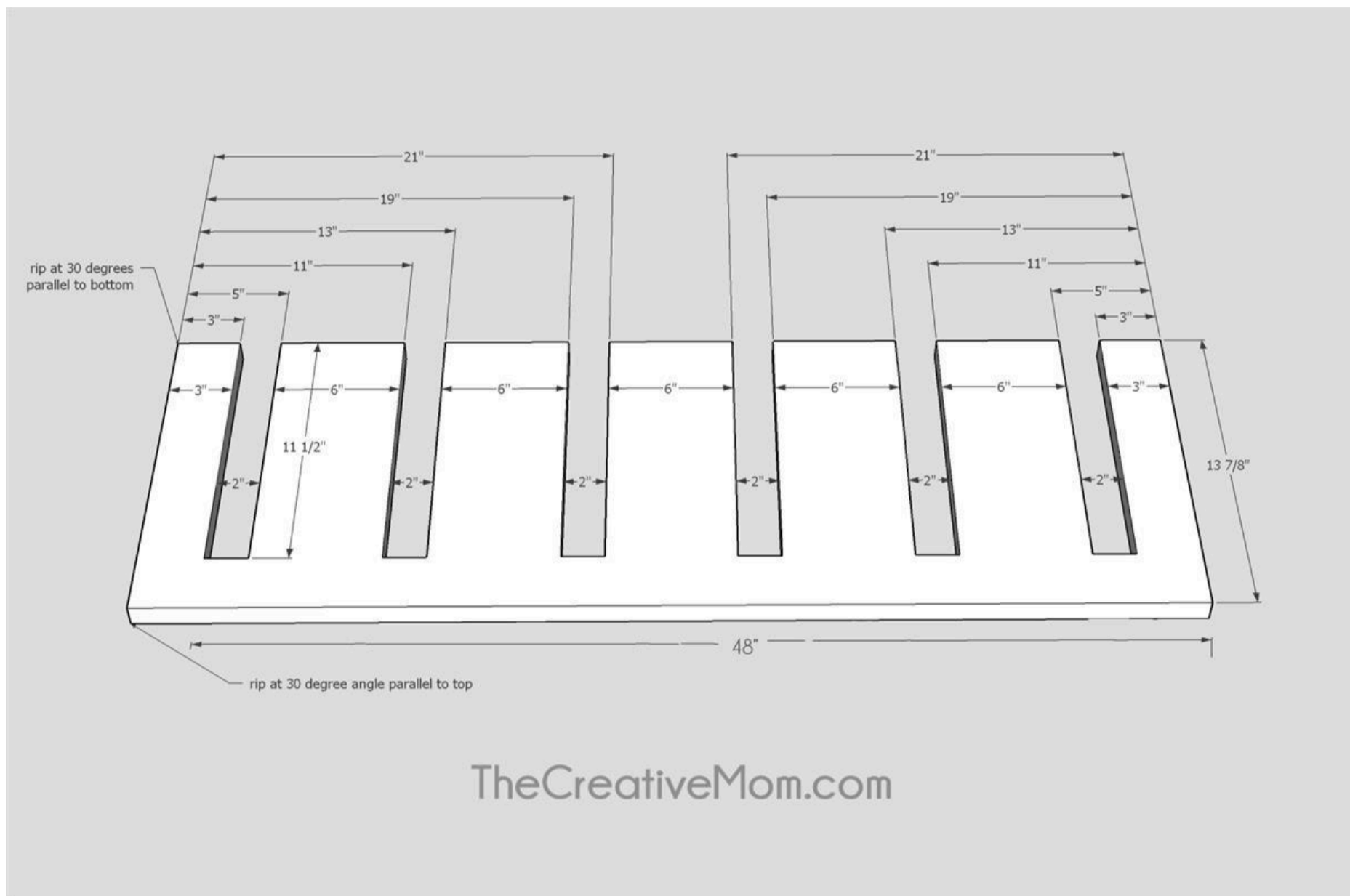
**Cut Plywood**

Use 1/2" thicker plywood. Using the Kreg Rip Cut, rip the plywood at 30 degrees. You will need two sheets- 13 7/8" x 48".

Then, using a jig saw, cut 2" slots into the plywood.

You will cut the slots in 3 inches, and then every 6 inches.

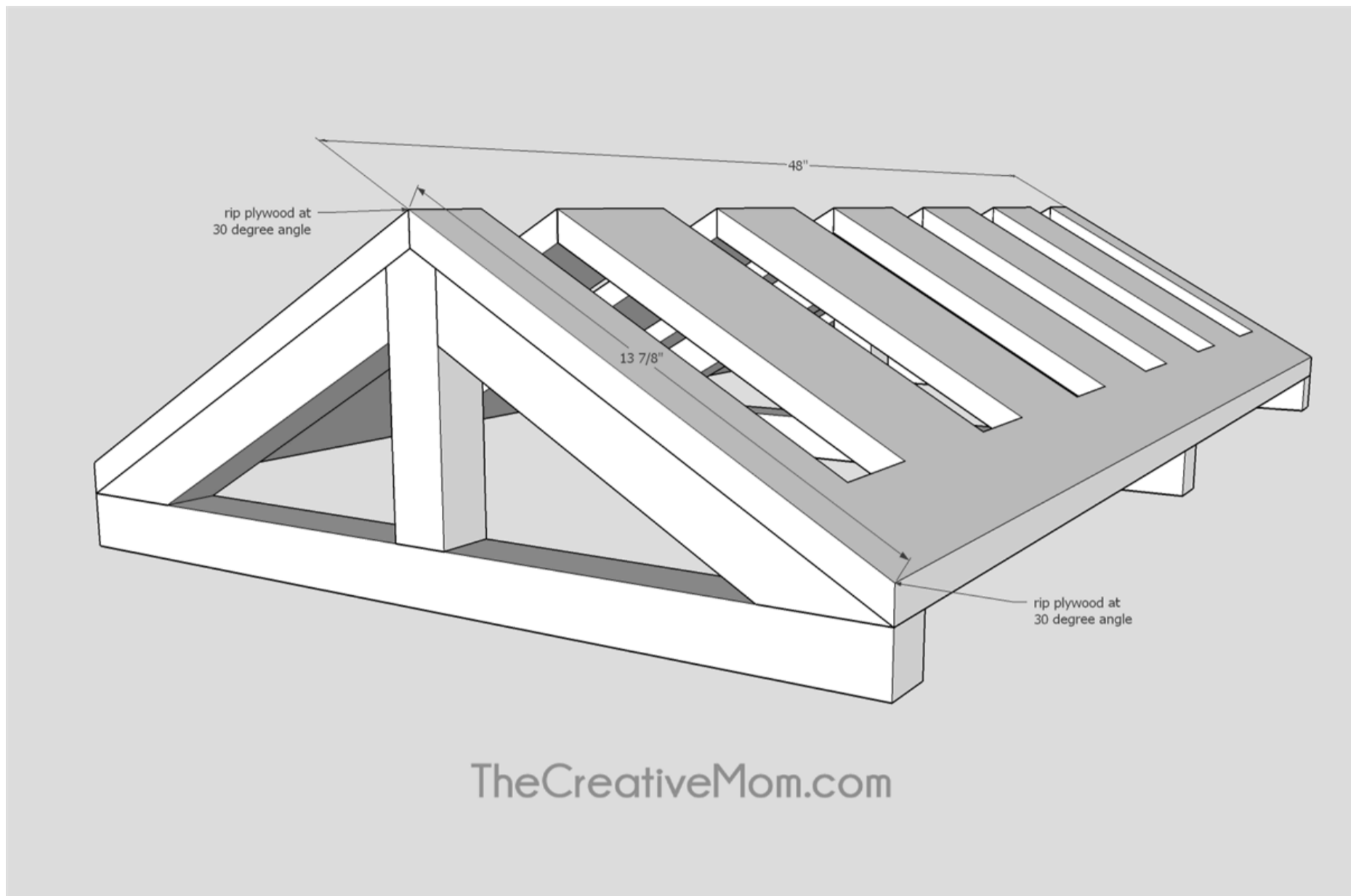
See the cut diagram in the plans for the measurements.



5

**Attach Plywood**

Using wood glue and brad nails, attach the plywood to the supports- one support on each end and one in the middle. Make sure the plywood sheets fit up against each other snug at the peak.



6

### Finish Wood

You can leave the bike rack as it is, or you can go ahead and sand the rack, then stain, paint, or polyurethane to finish.

