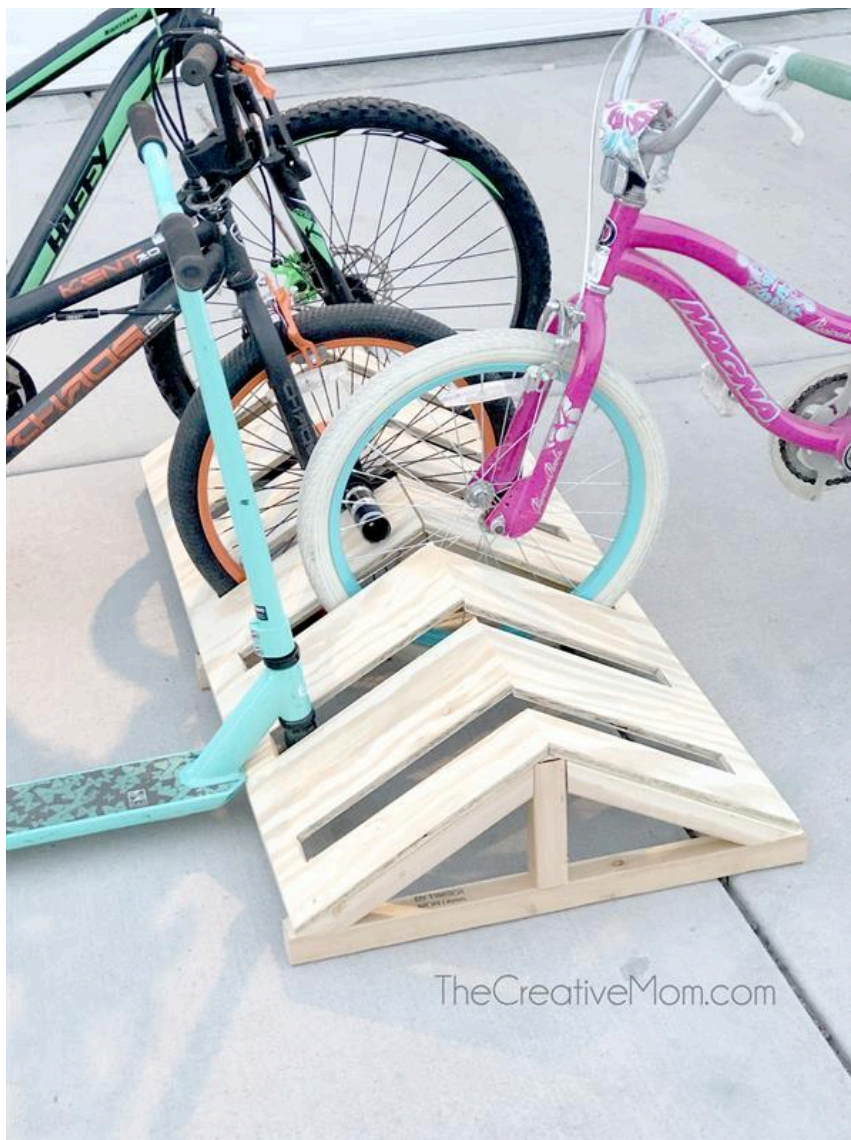


# Modern Bike Rack

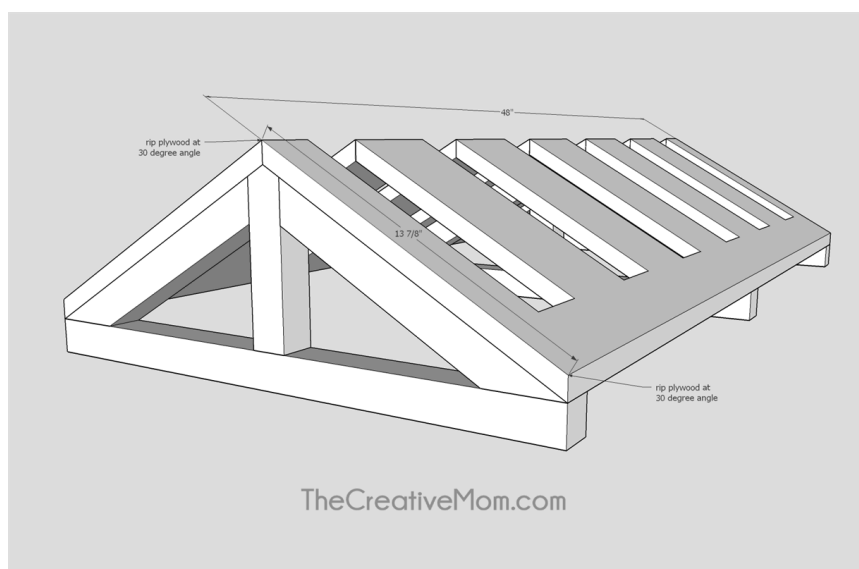
Difficulty

Easy

This minimalist bike rack is a modern solution for parking and storing bikes. This is a really quick and simple build. It only takes a couple of hours, basic tools, and about \$30 in materials to build.







# Tools

## Kreg Tools

Accu-Cut™ [Accu-Cut™](#)

Kreg® Pocket-Hole Jig 720 [Kreg® Pocket-Hole Jig 720](#)

## Other Tools

Circular Saw (cordless)

Jigsaw

Tape Measure

Impact Driver

Nail Gun

# Materials

## Wood Products

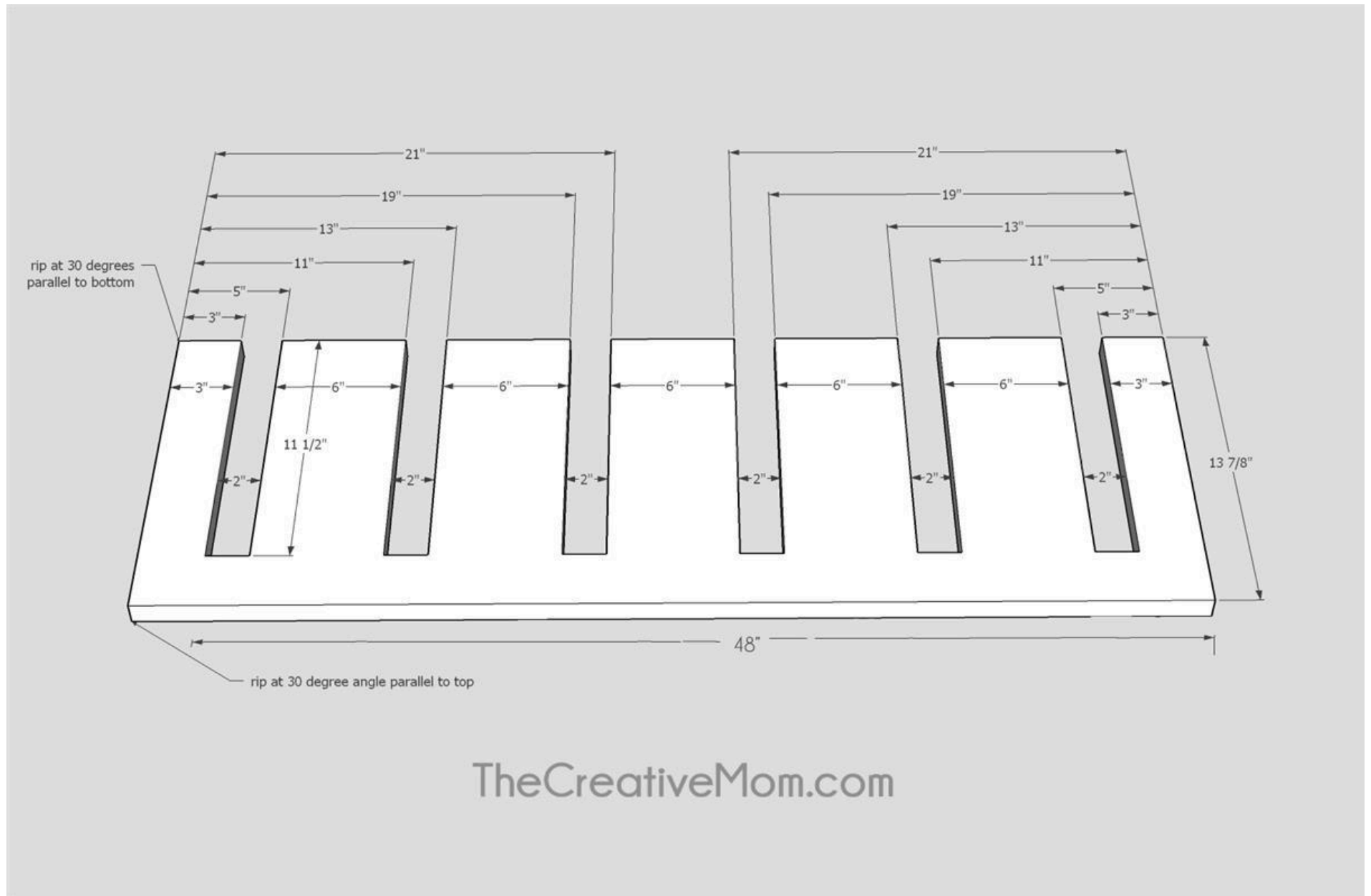
- 2 Board , 2x2 , 96"
- 1 Plywood , 1/2" Thick , Half Sheet

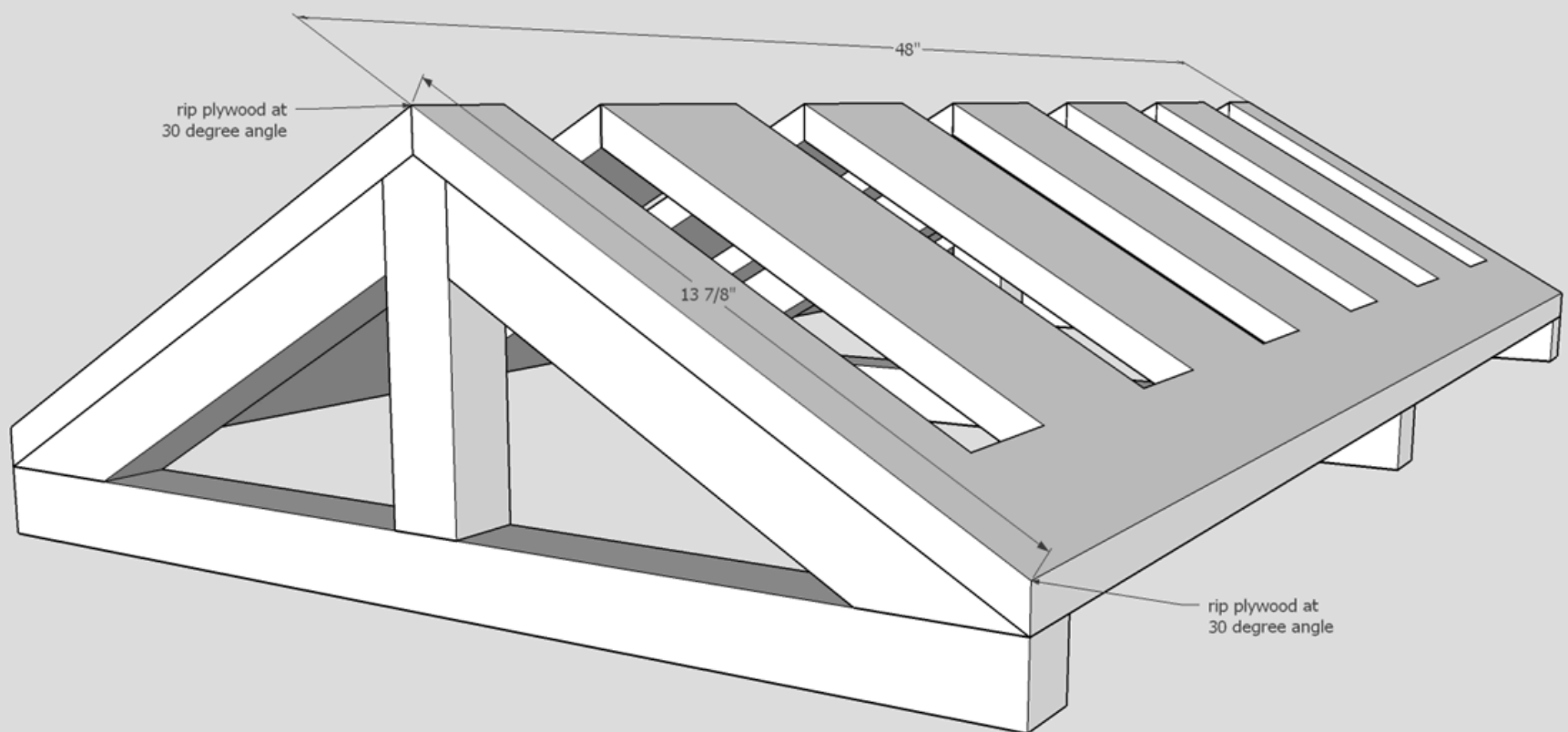
## Hardware & Supplies

- 30 1 1/4" Pocket Hole Screws
- 30 1" Brad Nails
- 1 Wood Glue

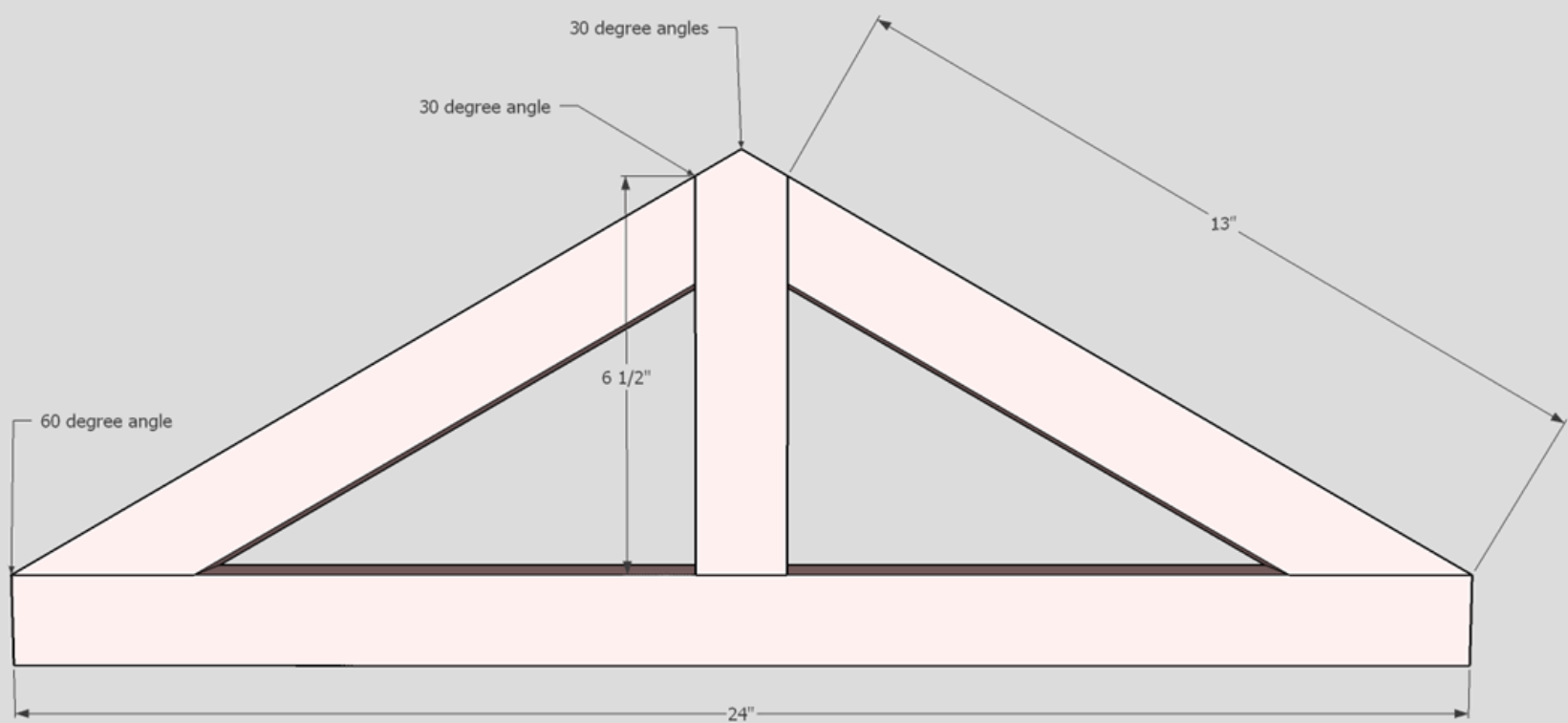
# Cut List & Parts

- 3** Vertical Supports , 7" 2x2's Cut At 30 Degree Point On One End
- 3** Horizontal Supports , 24" 2x2's
- 6** Diagonal Supports , 13" 2x2's Cut At 30 Degrees On One End And 60 Degrees On The Other End
- 2** Plywood Sheets , 1/2" Thick, 13 7/8 X 48" Ripped At 30 Degrees





TheCreativeMom.com



TheCreativeMom.com

# Directions

**1**

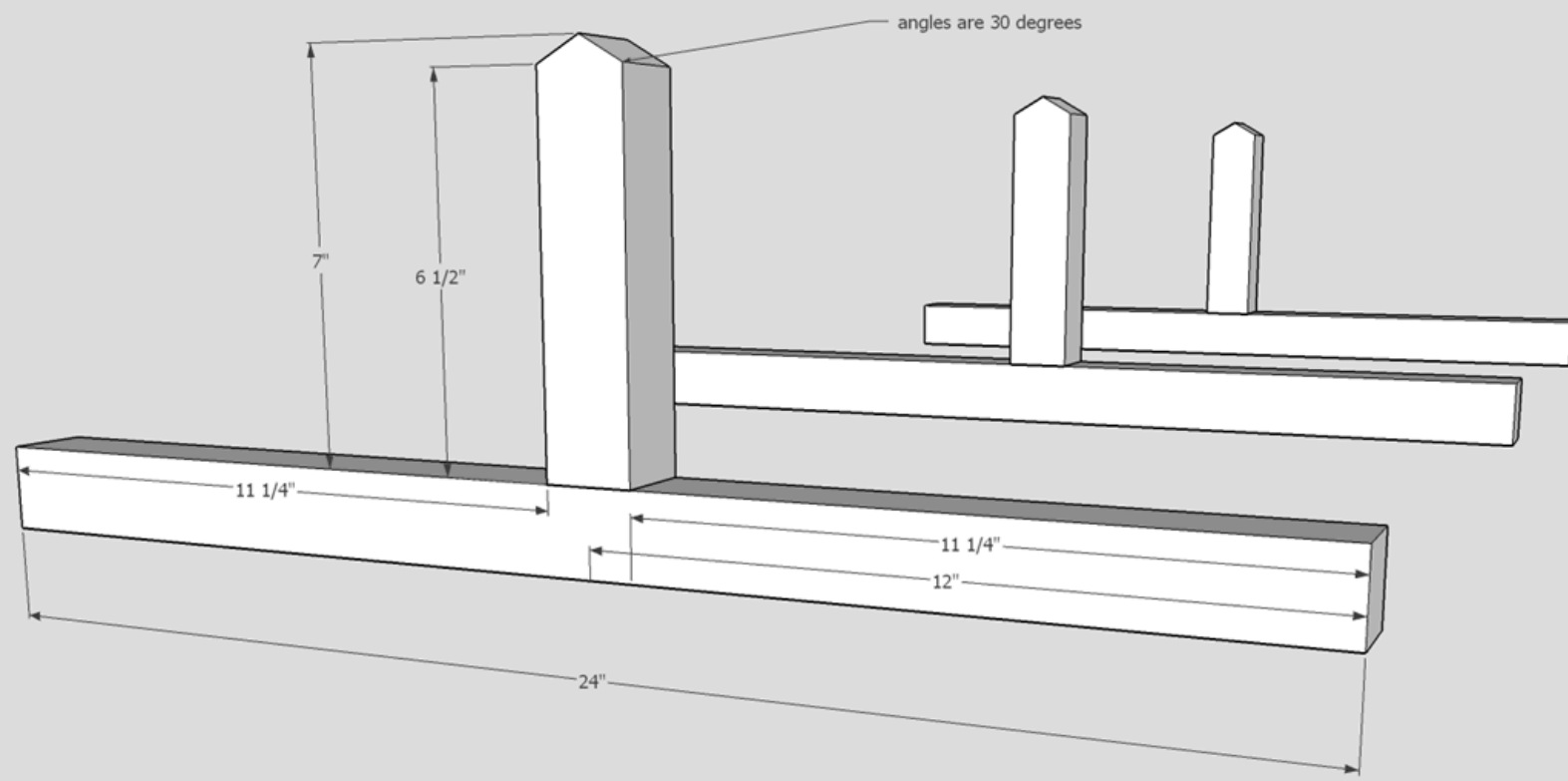
## Assemble Supports

Cut 3- 24" 2x2's and 3- 7" 2x2's.

The 7" 2x2's will be cut to a point at one end, using 30 degree angles. (see plans).

Use the Kreg Jig to drill pocket holes on the square end of your 7" board. Using wood glue and 1 1/4" pocket hole screws, attach the 7" board to the center of the 24" board.

You will need three of these supports.



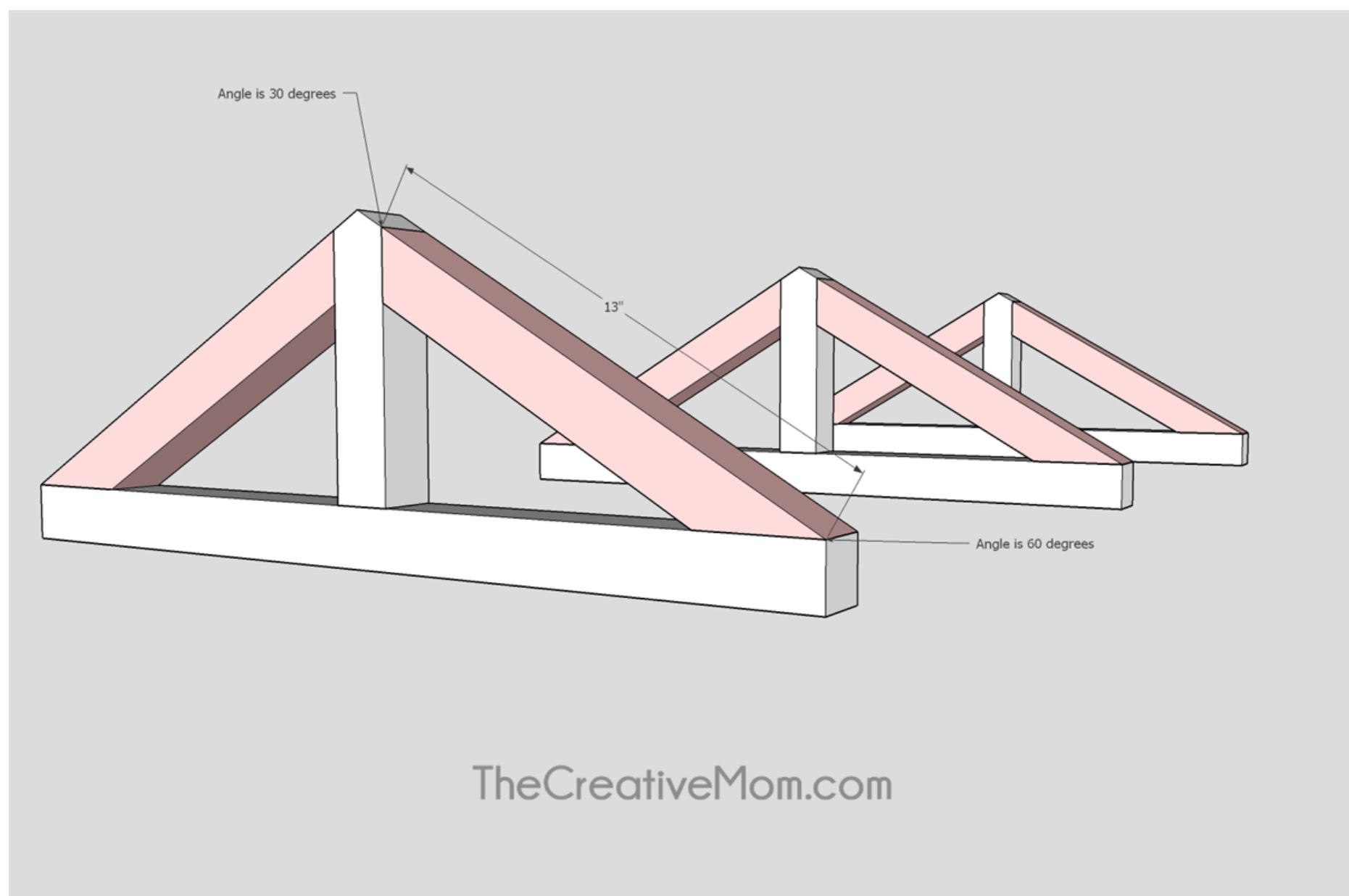
TheCreativeMom.com

## 2

**Add Diagonal Supports**

Cut 6- 13" 2x2's. The boards will be cut at 30 degrees on one end and 60 degrees on the other end. (see plans)

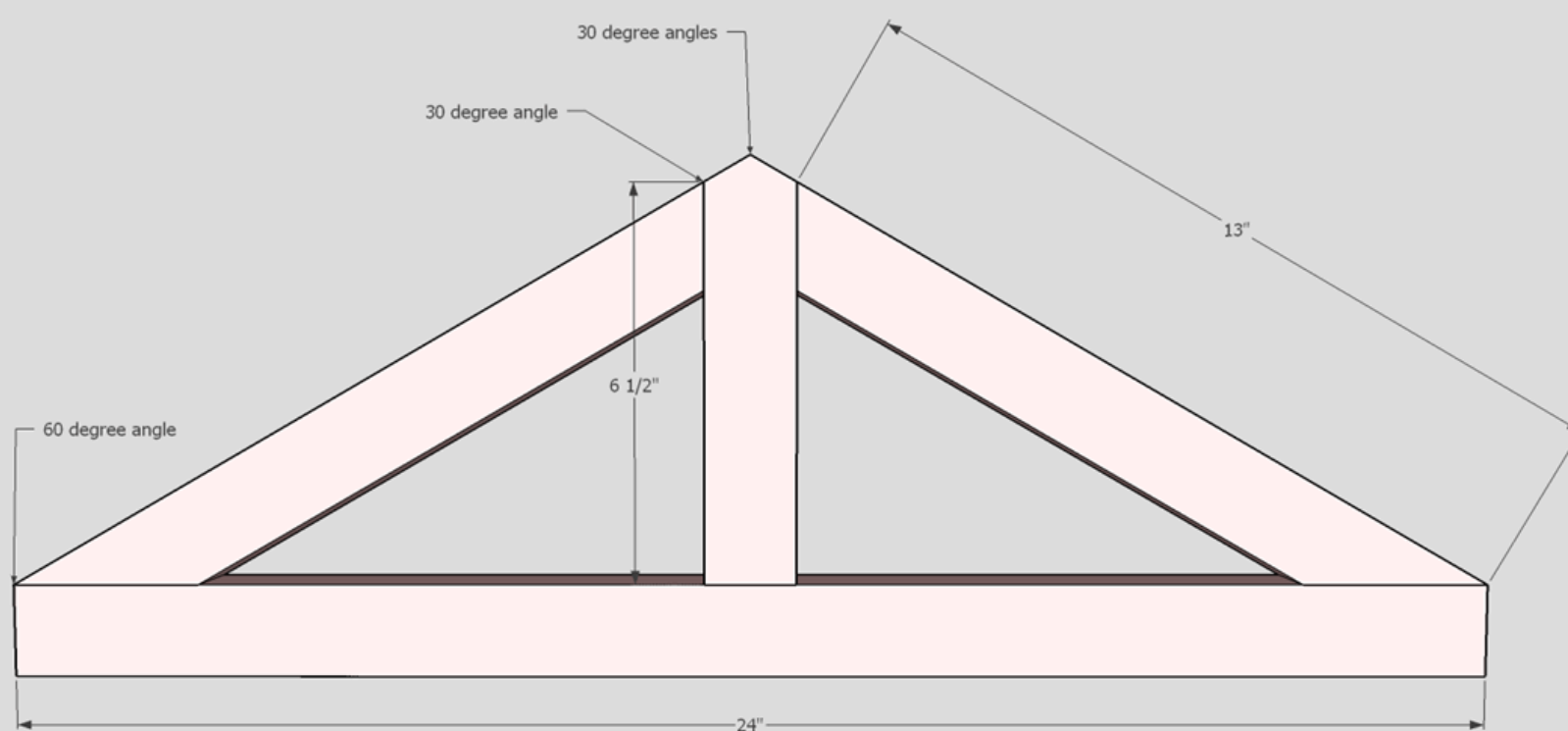
Using wood glue and 1 1/4" pocket hole screws, attach these boards to the supports you built in step 1.



## 3

**Finished supports**

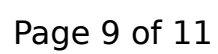
This image shows what the supports should look like.



TheCreativeMom.com



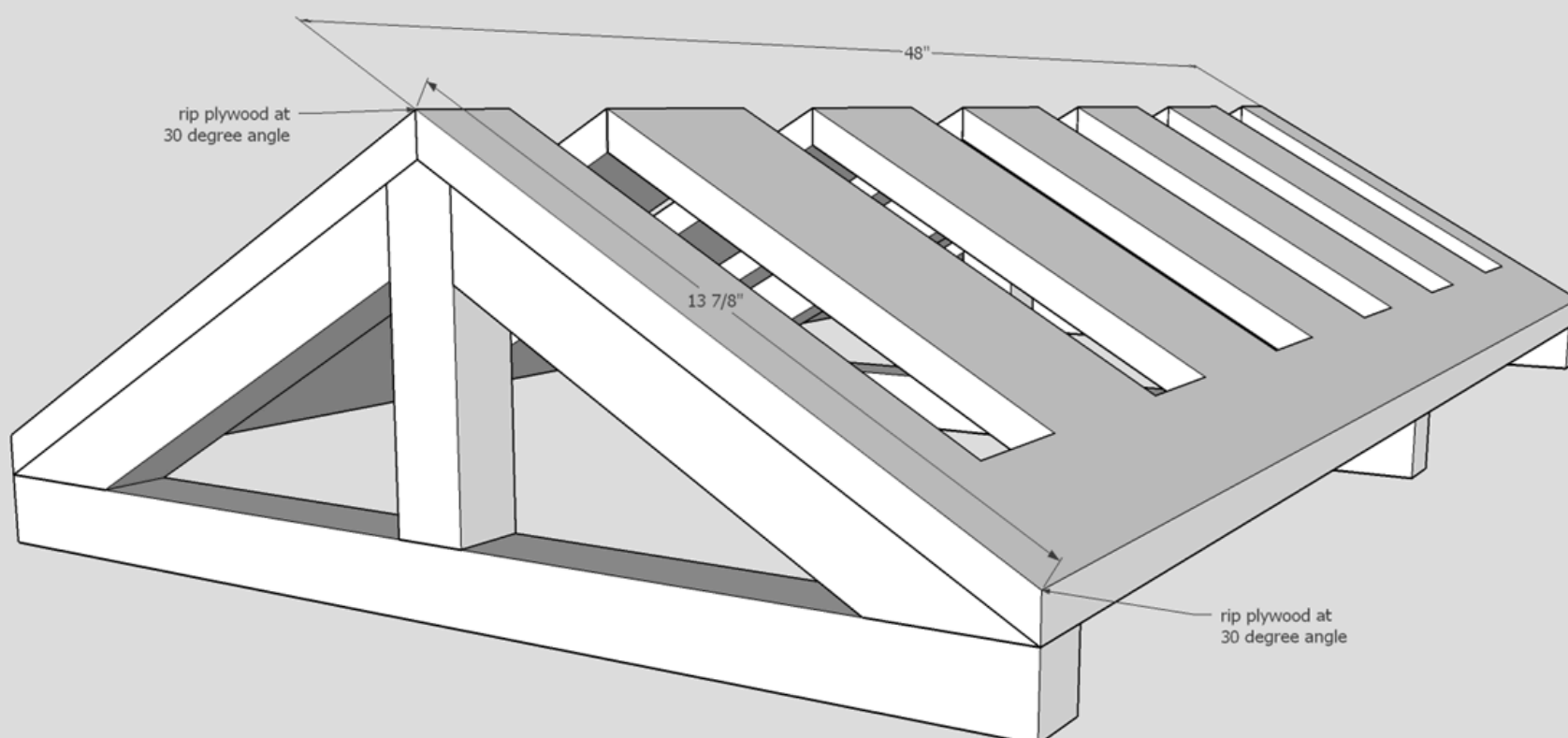
Use 1/2" thicker plywood. Using the Kreg Rip Cut, rip the plywood at 30 degrees. You will need two sheets- 13 7/8" x 48". Then, using a jig saw, cut 2" slots into the plywood. You will cut the slots in 3 inches, and then every 6 inches. See the cut diagram in the plans for the measurements.



## 5

**Attach Plywood**

Using wood glue and brad nails, attach the plywood to the supports- one support on each end and one in the middle. Make sure the plywood sheets fit up against each other snug at the peak.



TheCreativeMom.com

**6****Finish Wood**

You can leave the bike rack as it is, or you can go ahead and sand the rack, then stain, paint, or polyurethane to finish.

