

Modern Bench

Difficulty

Easy

Add a classic look to any space with this simple and elegant modern bench. Create a beautiful wood top or upholster it for a softer seating option. Whether using it in your entryway, mudroom, bedroom, or living room, you can't go wrong with this easy to build design!



Tools

Kreg Tools



Other Tools

Miter Saw

Drill (cordless)

Impact Driver

Stapler

Sander

Materials

Wood Products

1 Board , 1x8 , 96"

4 Board , 2x2 , 96"

Hardware & Supplies

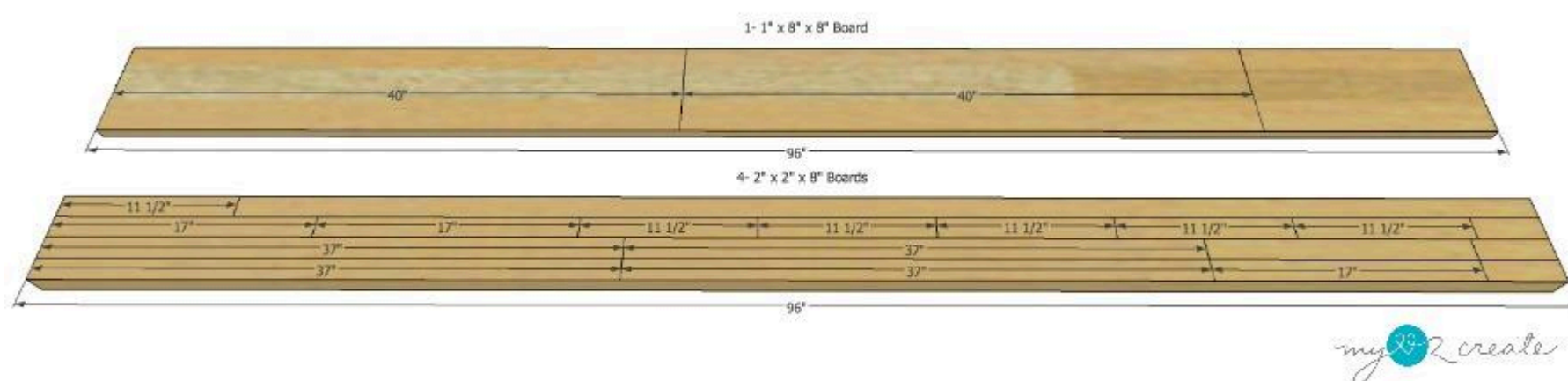
40 2 1/2" Pocket Hole Screws

10 2" Screws For Attaching Bench Seat To Bench Frame

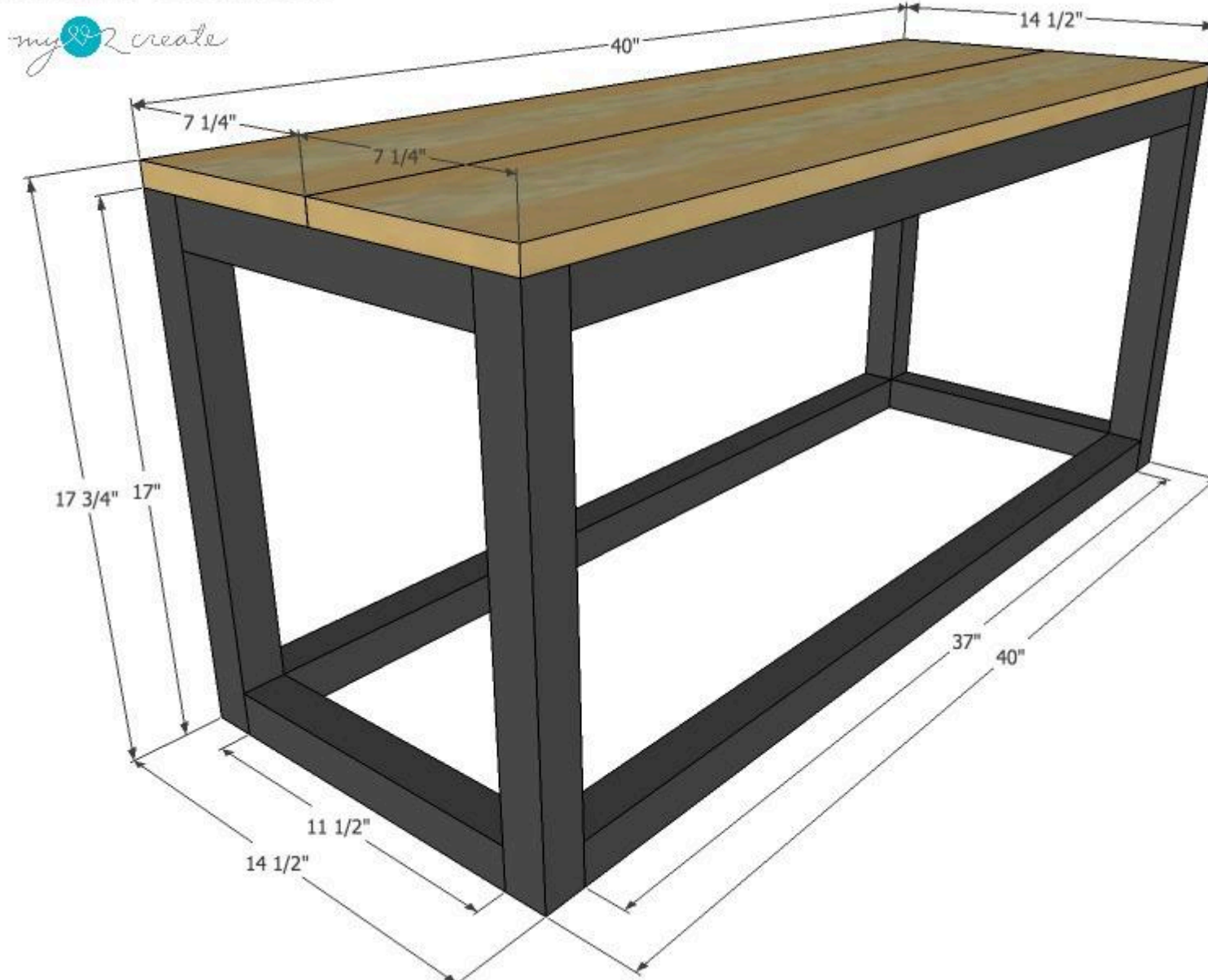
100 Staples (If Upholstering The Seat)

Cut List & Parts

- 4 Long Rails , 1 1/2" X 1 1/2" X 37"
- 4 Stiles , 1 1/2" X 1 1/2" X 17"
- 6 4 End Rails And 2 Seat Supports , 1 1/2" X 1 1/2" X 11 1/2"
- 2 Seat Boards , 3/4" X 7 1/4" X 40"
- 1 Foam Or Batting , 14 1/2" X 40"
- 1 Upholstery Fabric , 20 12" X 46"



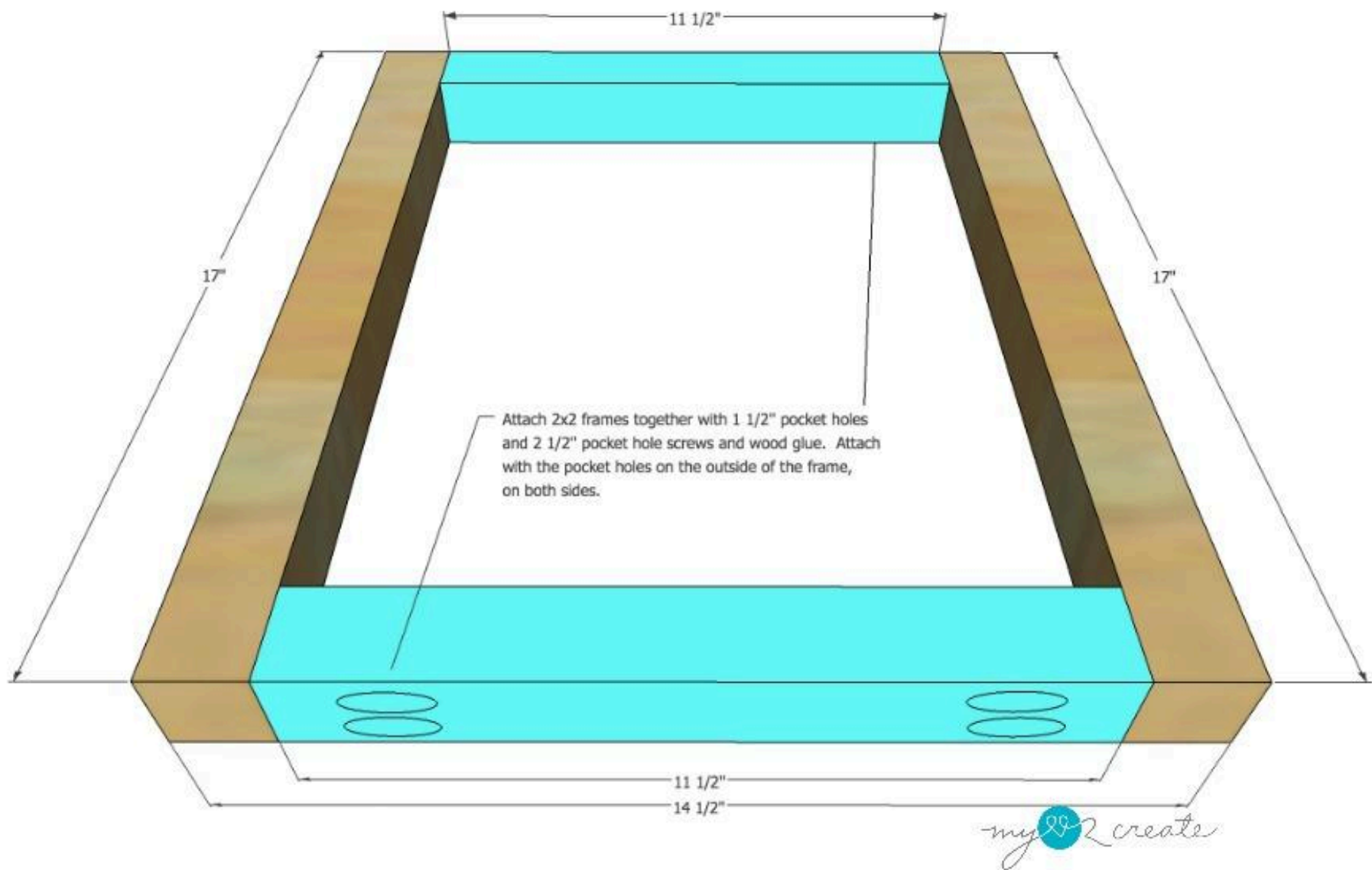
Modern Bench



Directions

1**Build side frames**

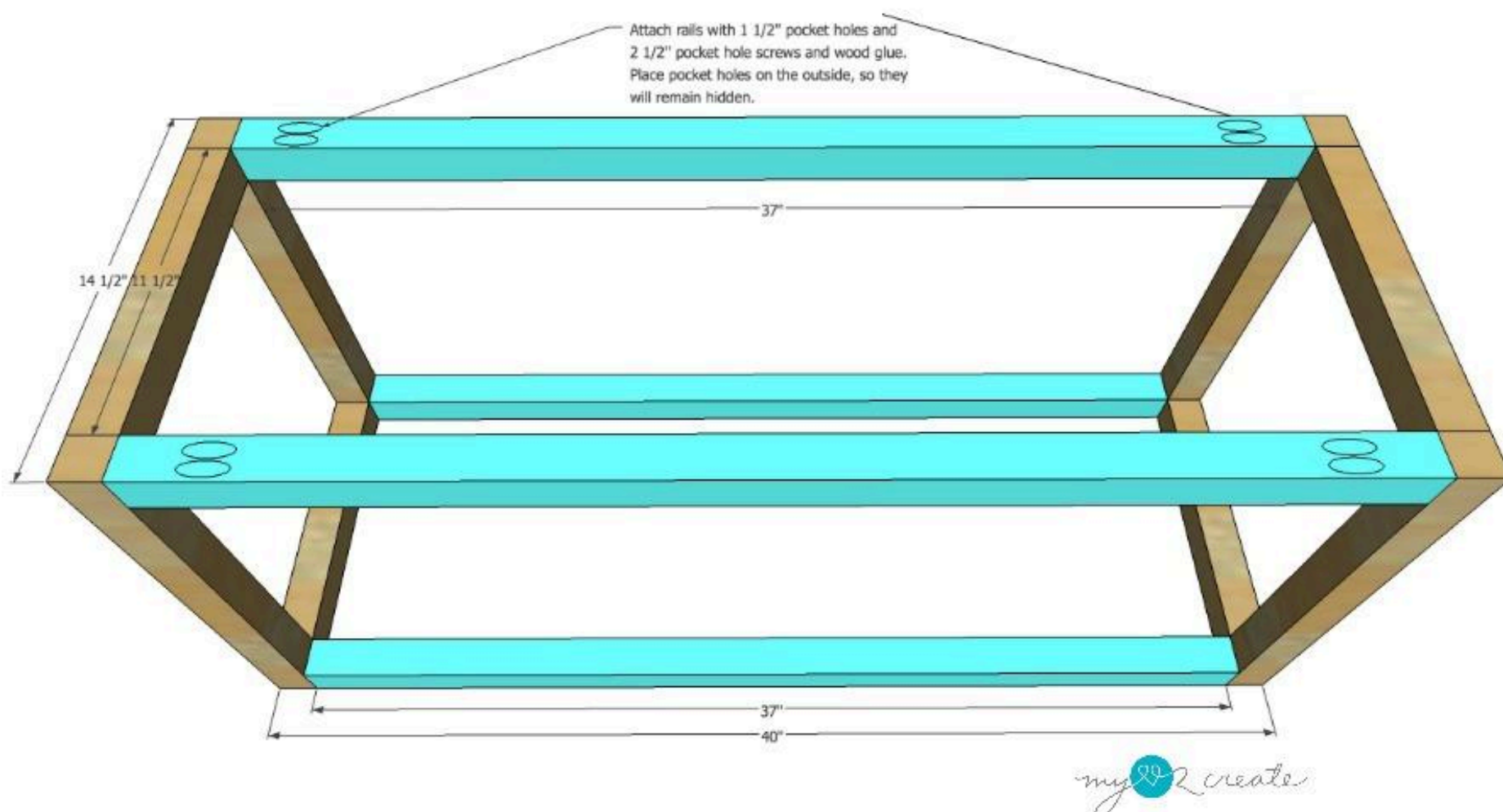
Build two side frames for your bench. Attach the 2x2 rails to the stiles with 1 1/2" pocket holes and 2 1/2" pocket hole screws and wood glue. Attach the pocket holes on the outside of the frame as shown.



2

Attach long rails to side frames

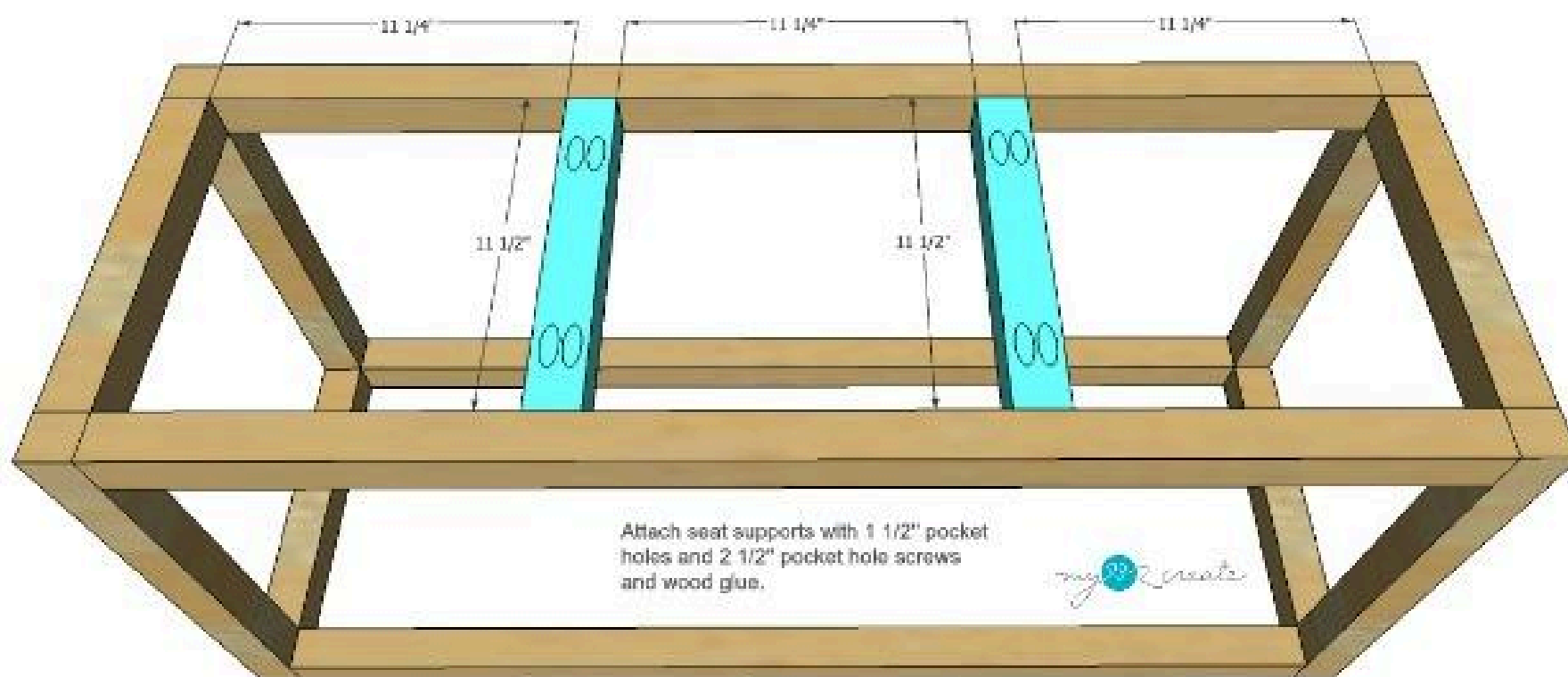
Attach the long rails to the side frames using 1 1/2" pocket holes and 2 1/2" pocket hole screws and wood glue. Make sure to attach the pocket holes on the outside of the frame. This will ensure they will be facing the bottom and top of the bench, and therefore not seen.



3

Add seat supports

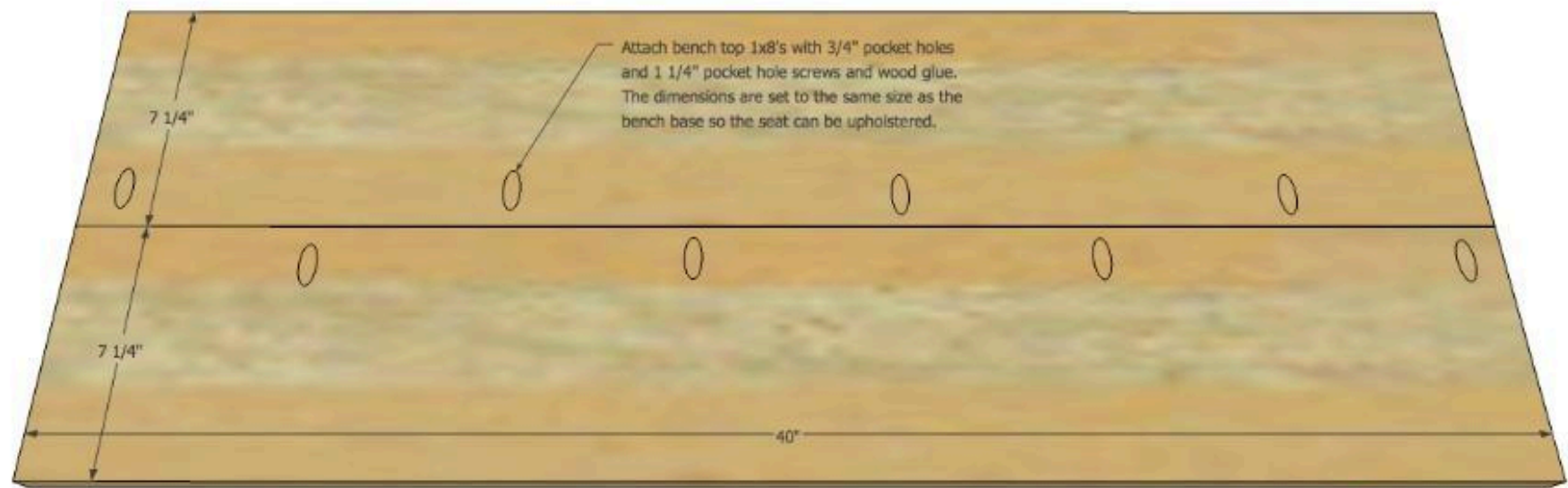
Attach the two seat supports with 1 1/2" pocket holes and 2 1/2" pocket hole screws and wood glue to the top of the bench as shown. Be aware that if you plan to modify the bench and make it longer, which would be cool, you will need to add more seat support boards to the top.



4

Build seat

Attach the two seat boards together with $\frac{3}{4}$ " pocket holes and $1\frac{1}{4}$ " pocket hole screws and wood glue.

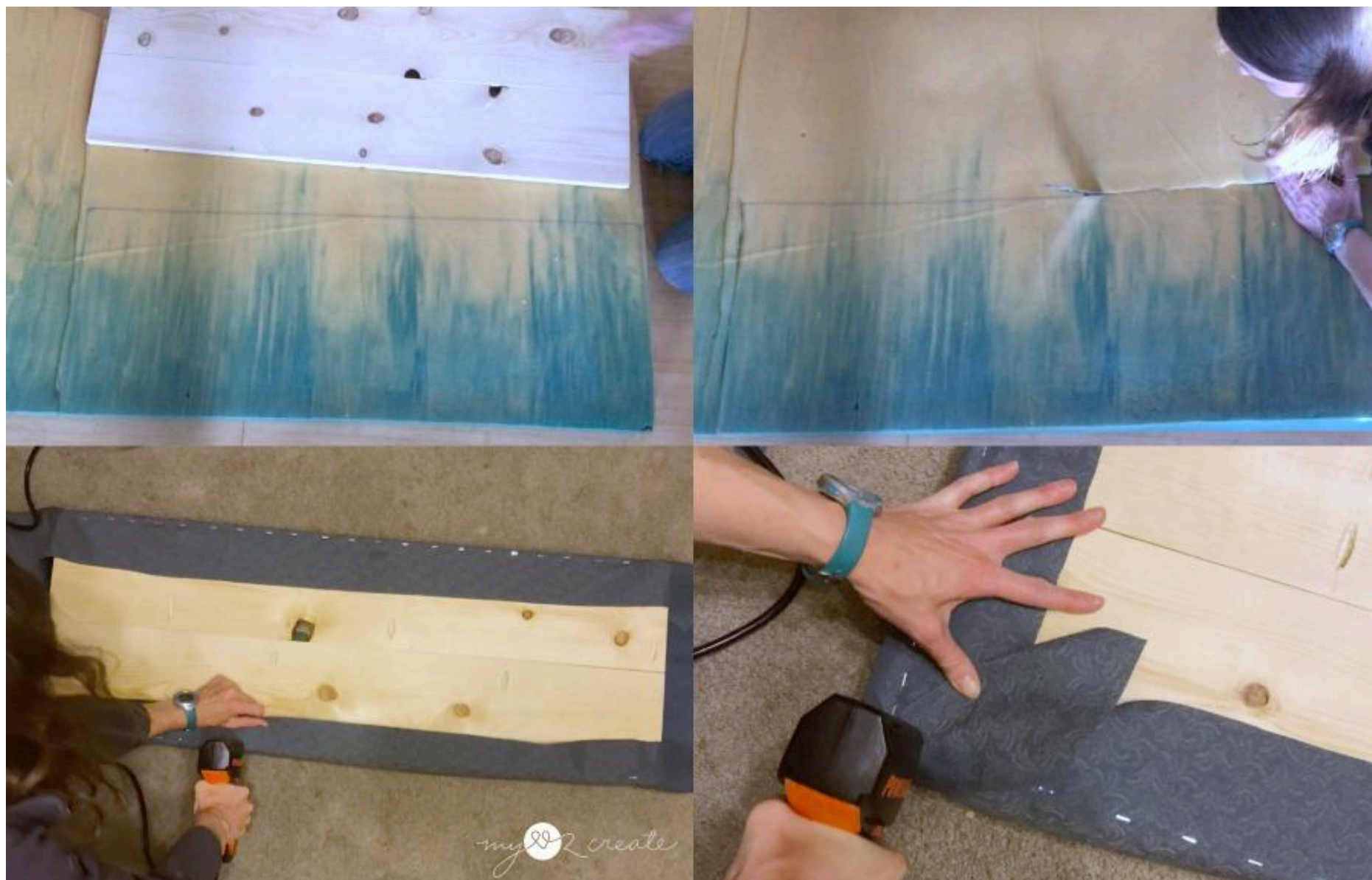
*my2create*

5

Upholster Bench Seat

This step is optional. Cut your foam or seat batting to fit the seat of the bench. Use spray adhesive to attach the foam to the top of the wood seat. Choose your fabric and cut it approximately 6 inches bigger than your seat. (this may vary depending on the thickness of the seat batting/foam, please adjust fabric as necessary)

Place your fabric up side down and center your foam covered seat board upside down on the fabric. Pull all the sides tightly to the bottom of the board and staple fabric in place. Finish with the corners by folding and pulling them to make a nice neat edge, and staple them onto the back of the seat board. Trim off any excess fabric as necessary.



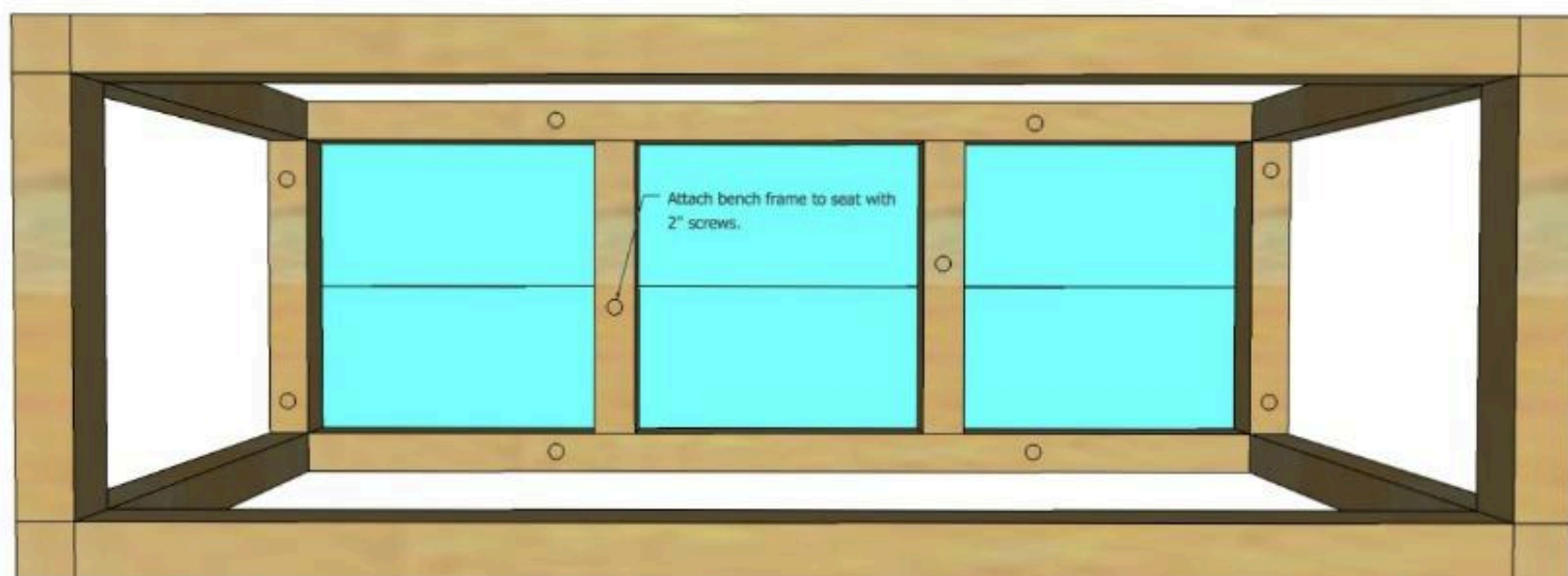
6

Stain or paint bench frame

Sand bench frame and then stain or paint to your desired look.

7**Attach seat top to bench frame**

Place the seat upside down to attach the bench frame. Screw through the top of the bench frame into the seat with 2" screws. I used Kreg pocket hole screws which are self tapping and I didn't have to pre-drill. If you use regular wood screws, make sure you pre-drill holes to avoid splitting the wood.

*my create*