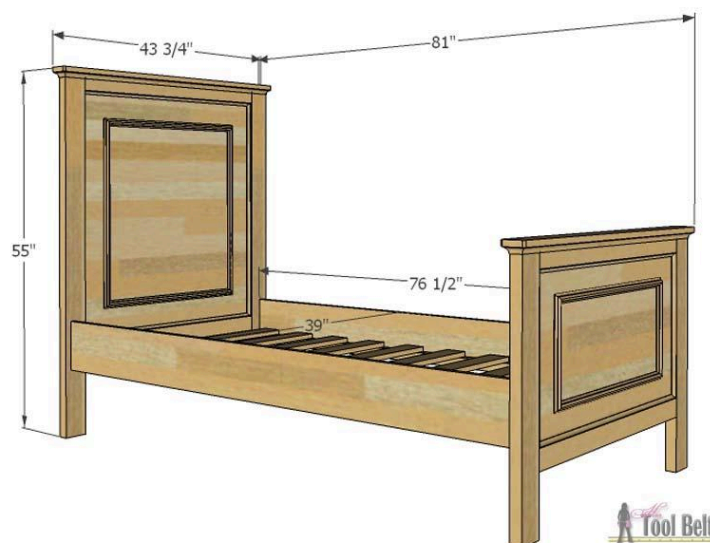


Faux Raised Panel Twin Bed

Difficulty

Advanced

This easy to build twin bed is perfect for any girl or boy bedroom. The added molding on the headboard and foot board create the look of beautiful raised panel. Add as much or little molding as you like. This bed is inspired by the Pottery Barn Kids Fillmore bed. See the extra section for trundle.



Tools

Kreg Tools



Other Tools

Miter Saw

Table Saw

Tape Measure

Drill (cordless)

Impact Driver

Nail Gun

Router

Sander

Materials

Wood Products

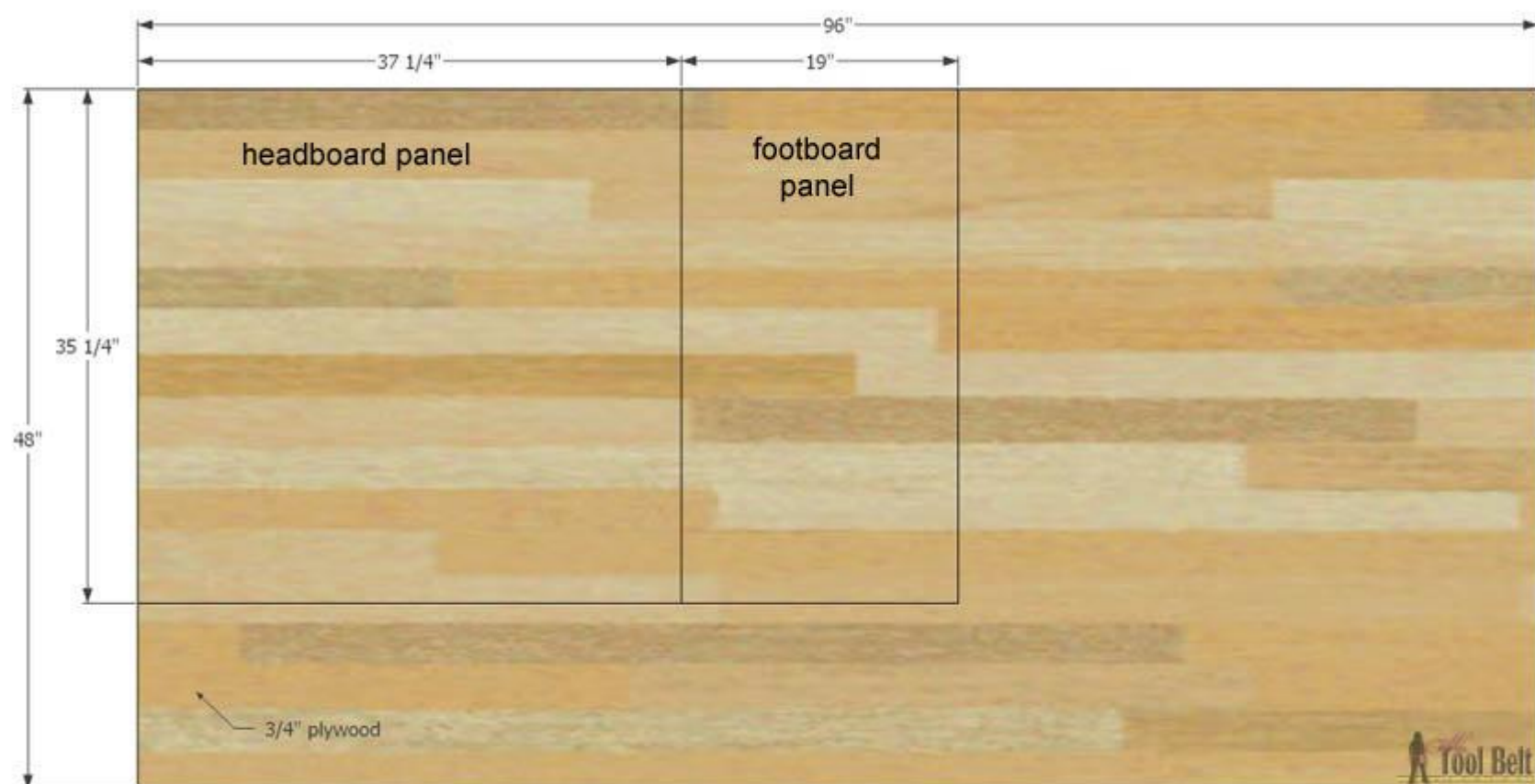
- 1** Plywood , 3/4" Thick , Full Sheet
- 2** Board , 2x4 , 96"
- 2** Board , 2x3 , 96"
- 6** Board , 1x4 , 96"
- 2** Board , 1x8 , 96"
- 2** Board , 2x2 , 96"
- 2** Panel Cap Molding , 1/2 In. X 1-1/6 In. , 96"
- 3** 1/2" Cove Molding Optional , 1/2" Thick , 96"
- 2** 3/4" Cove Molding Optional , 3/4" Thick , 96"

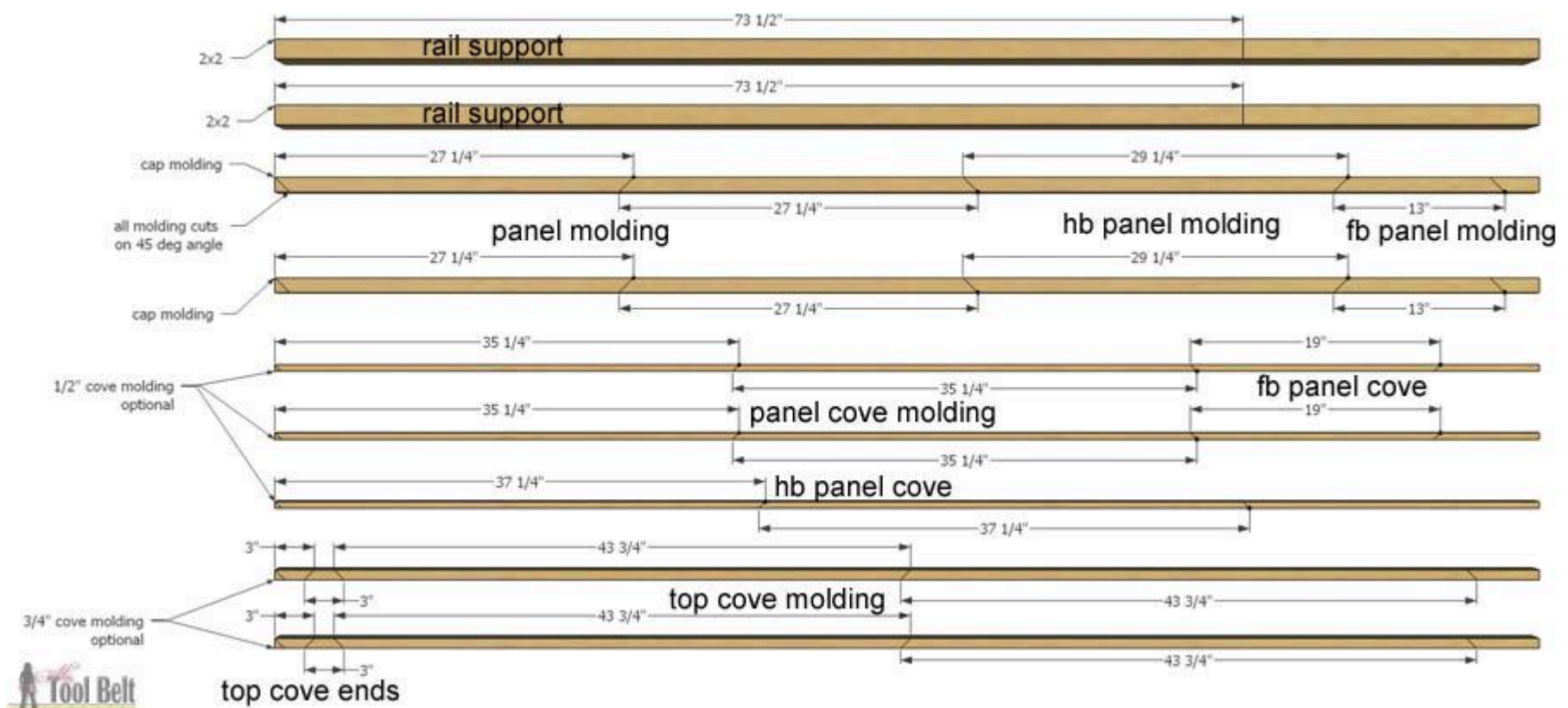
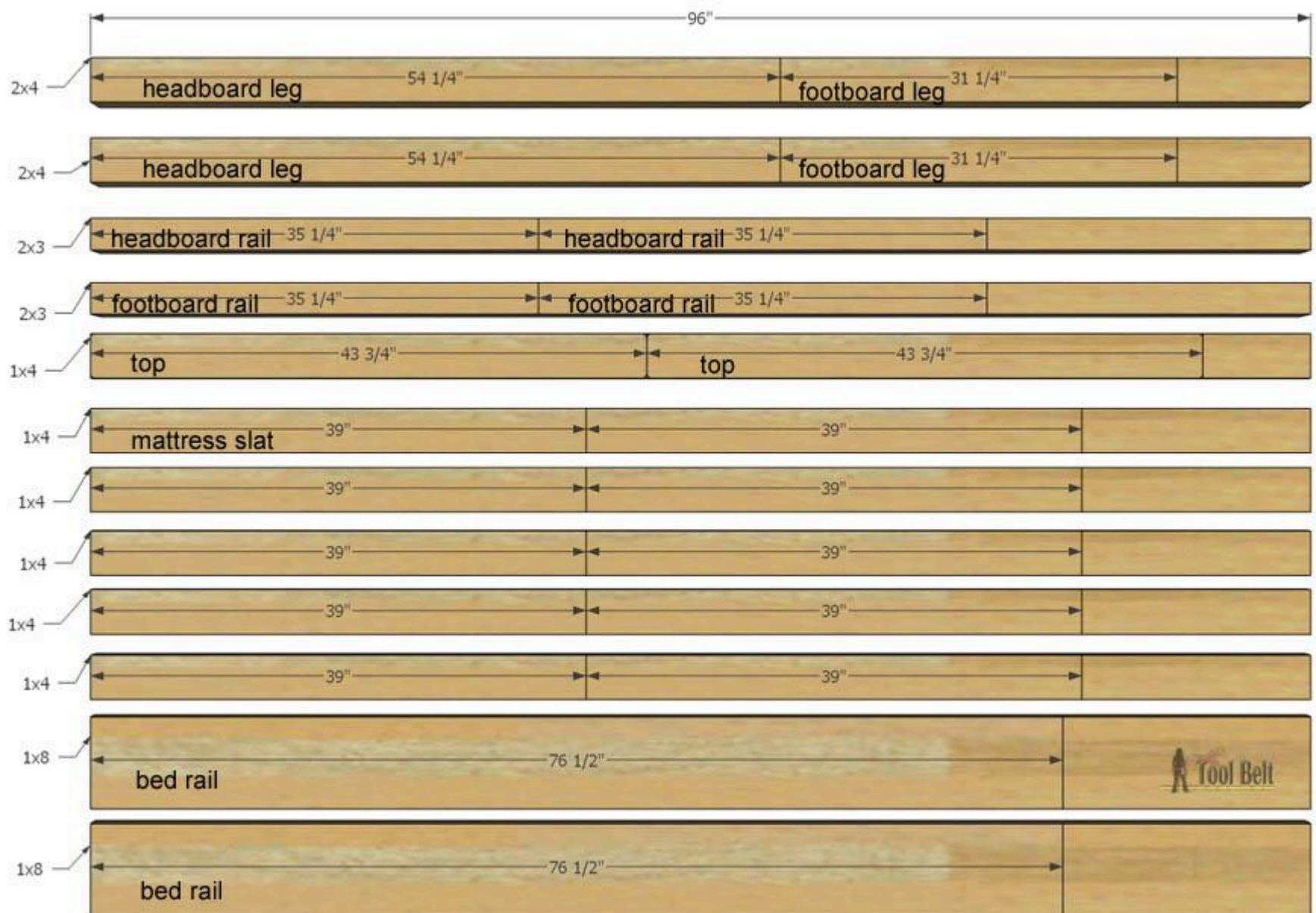
Hardware & Supplies

- 16** 2 1/2" Kreg Pocket Hole Screws
- 70** 1 1/4" Kreg Pocket Hole Screws
- 70** 1" Brad Nails
- 6** 2" Brad Nails
- 20** 2" Wood Screws
- 40** 1 1/4" Brad Nails
- 1** Wood Glue
- 1** Sandpaper
- 1** Paint Primer
- 1** Paint
- 1** Wood Filler
- 4** Bed Rail Fasteners

Cut List & Parts

- 1** Headboard Panel , 3/4" X 35 1/4" X 37 1/4"
- 1** Footboard Panel , 3/4" X 35 1/4" X 19"
- 2** Headboard Leg , 1 1/2" X 3 1/2" X 54 1/4"
- 2** Footboard Leg , 1 1/2" X 3 1/2" X 31 1/4"
- 2** Headboard Rail , 1 1/2" X 2 1/2" X 35 1/4"
- 2** Footboard Rail , 1 1/2" X 2 1/2" X 35 1/4"
- 2** Top , 3/4" X 3 1/4" X 43 3/4"
- 10** Mattress Slat , 3/4" X 3 1/2" X 39"
- 2** Bed Rail , 3/4" X 7 1/4" X 76 1/2"
- 2** Rail Support , 1 1/2" X 1 1/2" X 73 1/2"
- 4** Panel Molding , 1/2" X 1 1/16" X 27 1/4"
- 2** Hb Panel Molding , 1/2" X 1 1/16" X 29 1/4"
- 2** Fb Panel Molding , 1/2" X 1 1/16" X 13"
- 4** Panel Cove Molding , 1/2" X 1/2" X 35 1/4"
- 2** Hb Panel Cove , 1/2" X 1/2" X 37 1/4"
- 2** Fb Panel Cove , 1/2" X 1/2" X 19"
- 4** Top Cove Ends , 3/4" X 3/4" X 3"
- 2** Top Cove Molding , 3/4" X 3/4" X 43 3/4"





Directions

1

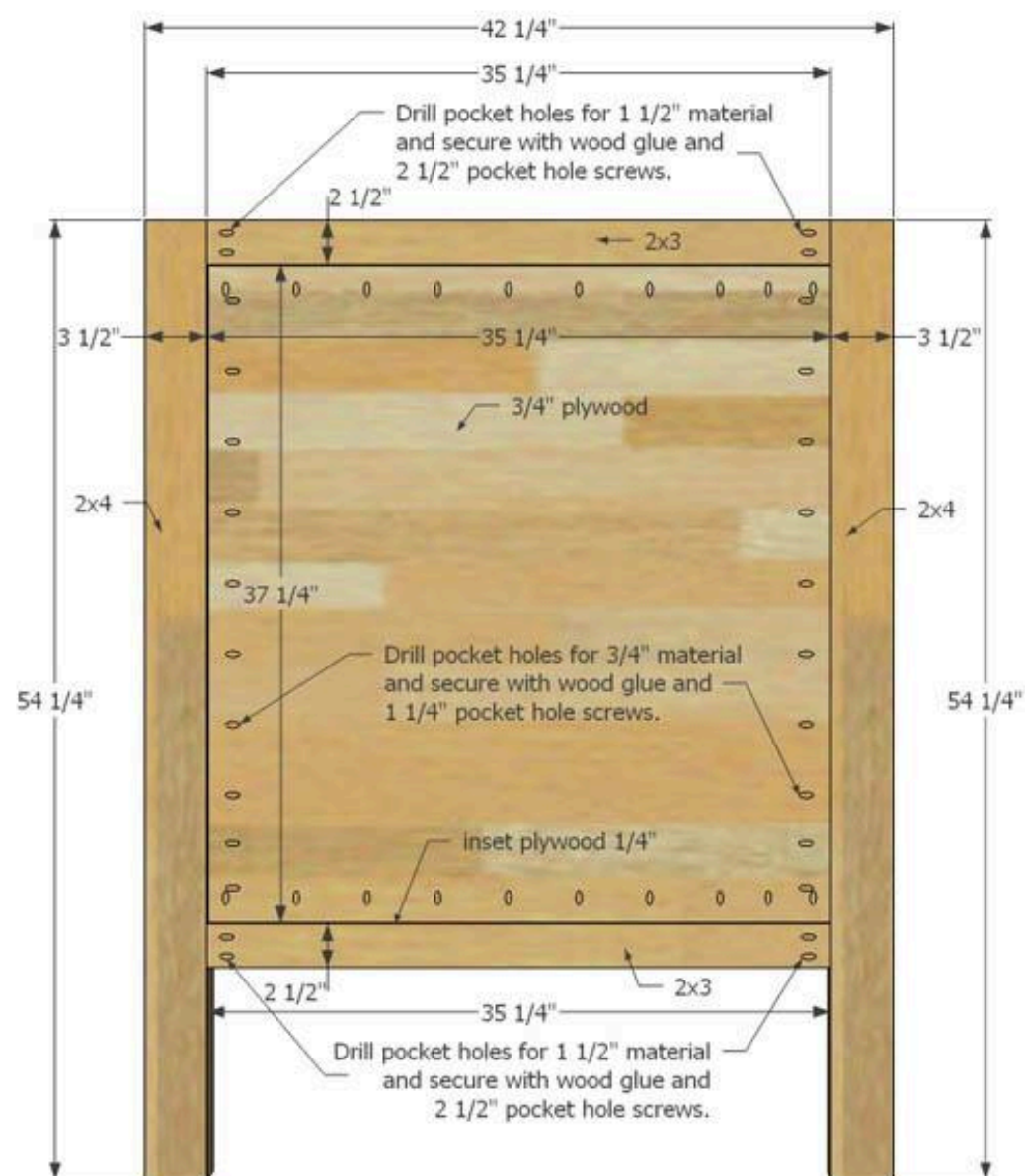
Cut out bed parts

Follow the cut diagram and cut list, cut the parts for the bed. Wait to cut the molding until the headboard and foot board are assembled.

2

Assemble Headboard

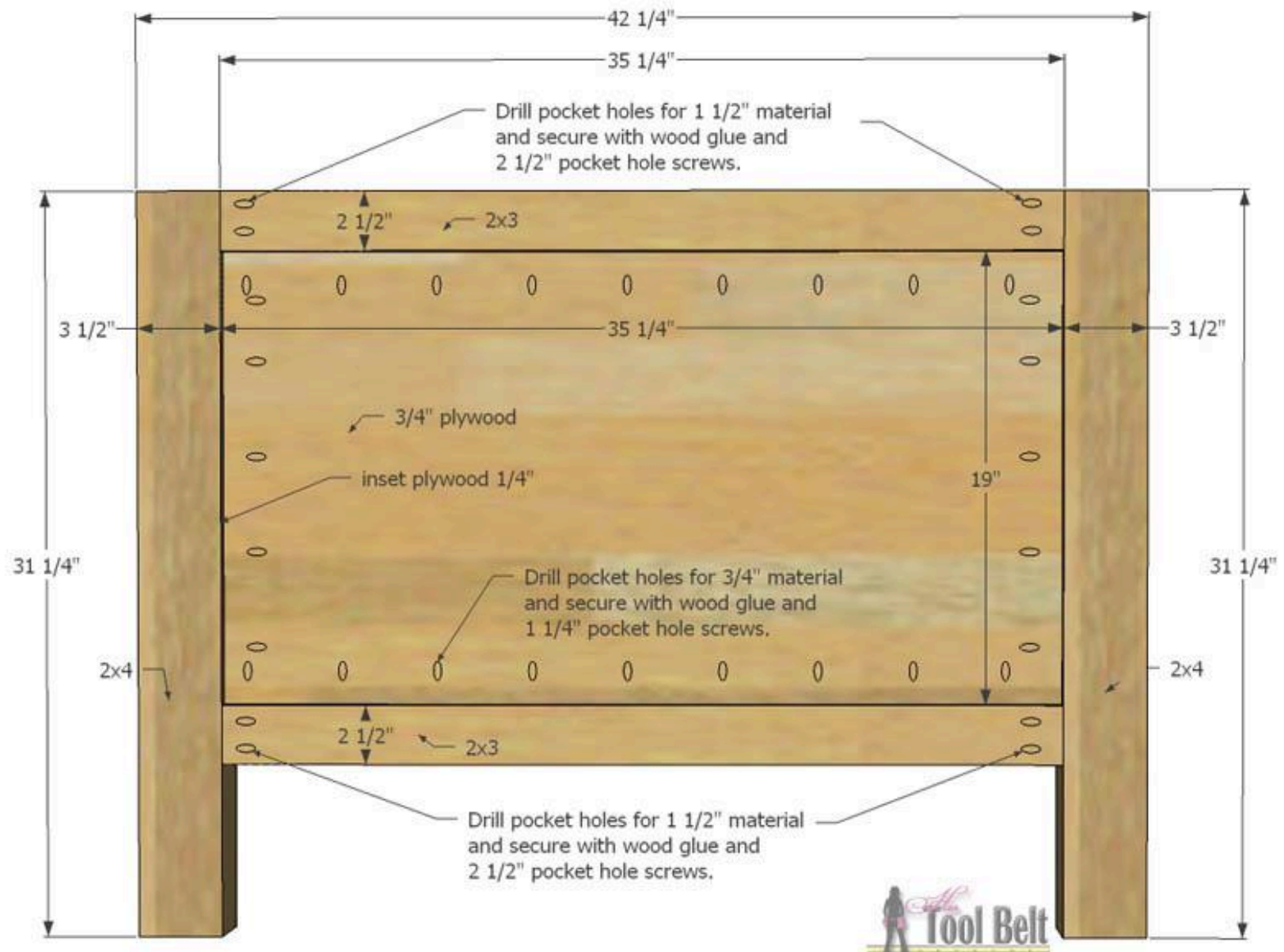
Drill pocket holes for 1 1/2" material in both ends of the headboard rails. Drill pocket holes for 3/4" material in the backside of headboard panel. Secure the headboard panel to the headboard rails with wood glue and 1 1/4" pocket hole screws, inset the panel 1/8"-1/4". Secure the headboard rails to the headboard legs with wood glue and 2 1/2" pocket hole screws. Secure the headboard panel to the headboard legs with wood glue and 1 1/4" pocket hole screws, inset the panel 1/8"-1/4".



3

Assemble Foot Board

Drill pocket holes for 1 1/2" material in both ends of the footboard rails. Drill pocket holes for 3/4" material in the backside of footboard panel. Secure the footboard panel to the footboard rails with wood glue and 1 1/4" pocket hole screws, inset the panel 1/8"-1/4". Secure the footboard rails to the footboard legs with wood glue and 2 1/2" pocket hole screws. Secure the footboard panel to the footboard legs with wood glue and 1 1/4" pocket hole screws, inset the panel 1/8"-1/4".

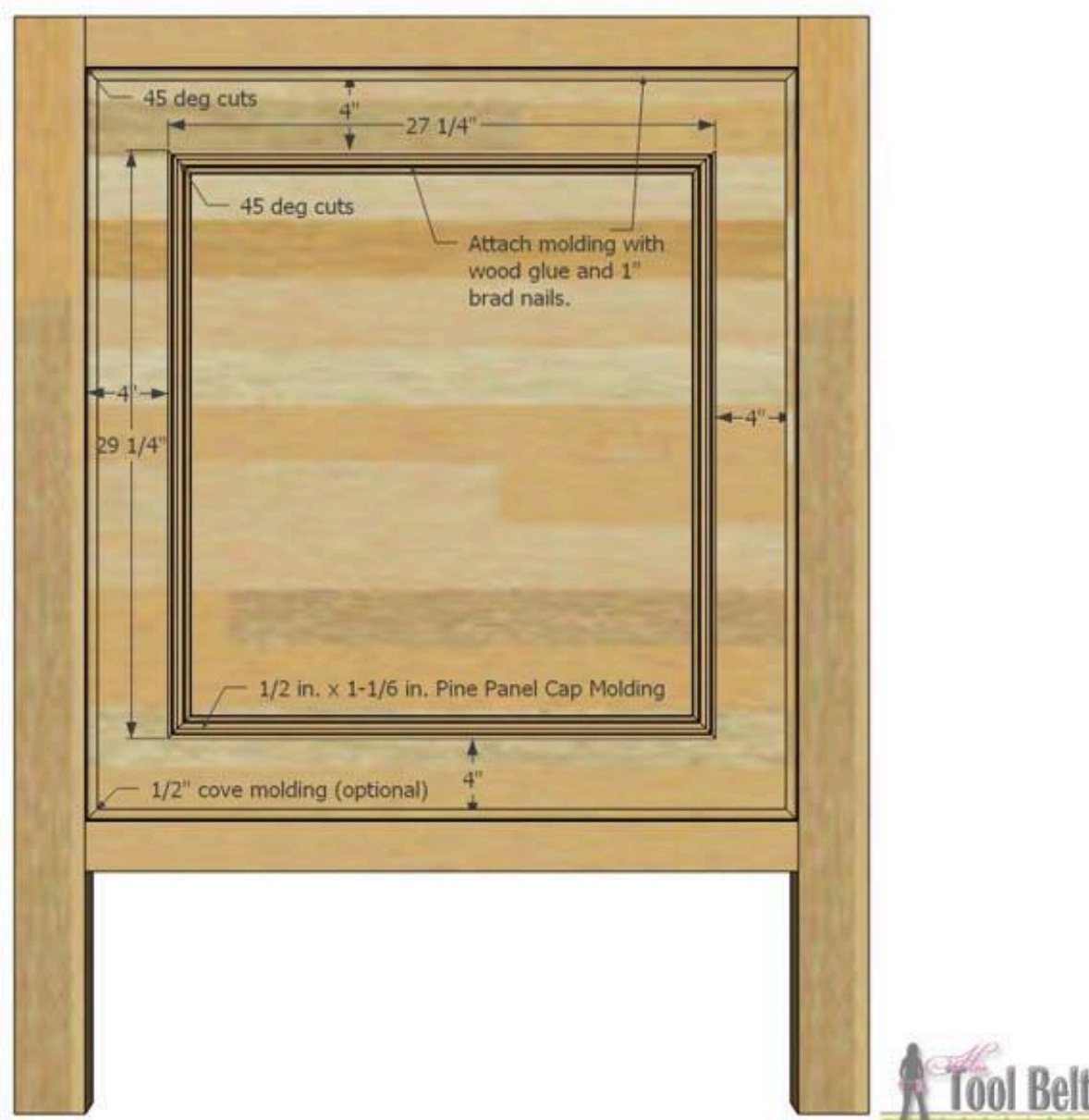


4

Headboard Panel Molding

Cut the panel molding, hb panel molding and fb panel molding (all molding cuts are on a 45 deg angle). Measure/mark in 4" from each side of the headboard panel. Use wood glue and 1" brad nails to secure the molding to the panel.

Optional cove panel molding - cut to fit 1/2" cove molding to the outside perimeter of the headboard panel. Use wood glue and 1" brad nails to secure the molding to the frame/panel. Cove molding is easy to DIY with a router table and cove router bit.

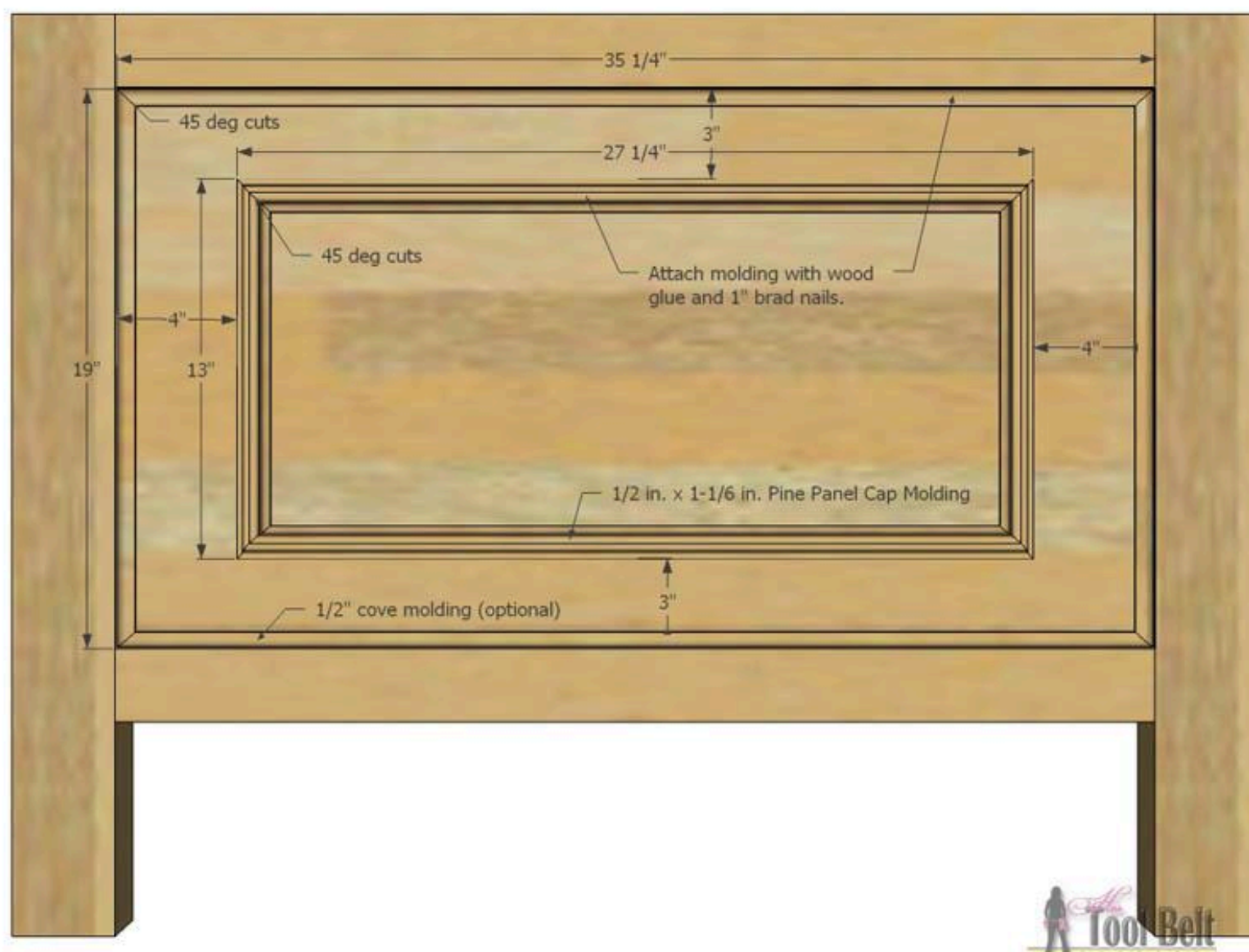


5

Foot Board Panel Molding

Measure/mark in 4" from each side of the footboard panel and 3" from the top/bottom. Use wood glue and 1" brad nails to secure the molding to the panel.

Optional cove panel molding - cut to fit 1/2" cove molding to the outside perimeter of the footboard panel. Use wood glue and 1" brad nails to secure the molding to the frame/panel.

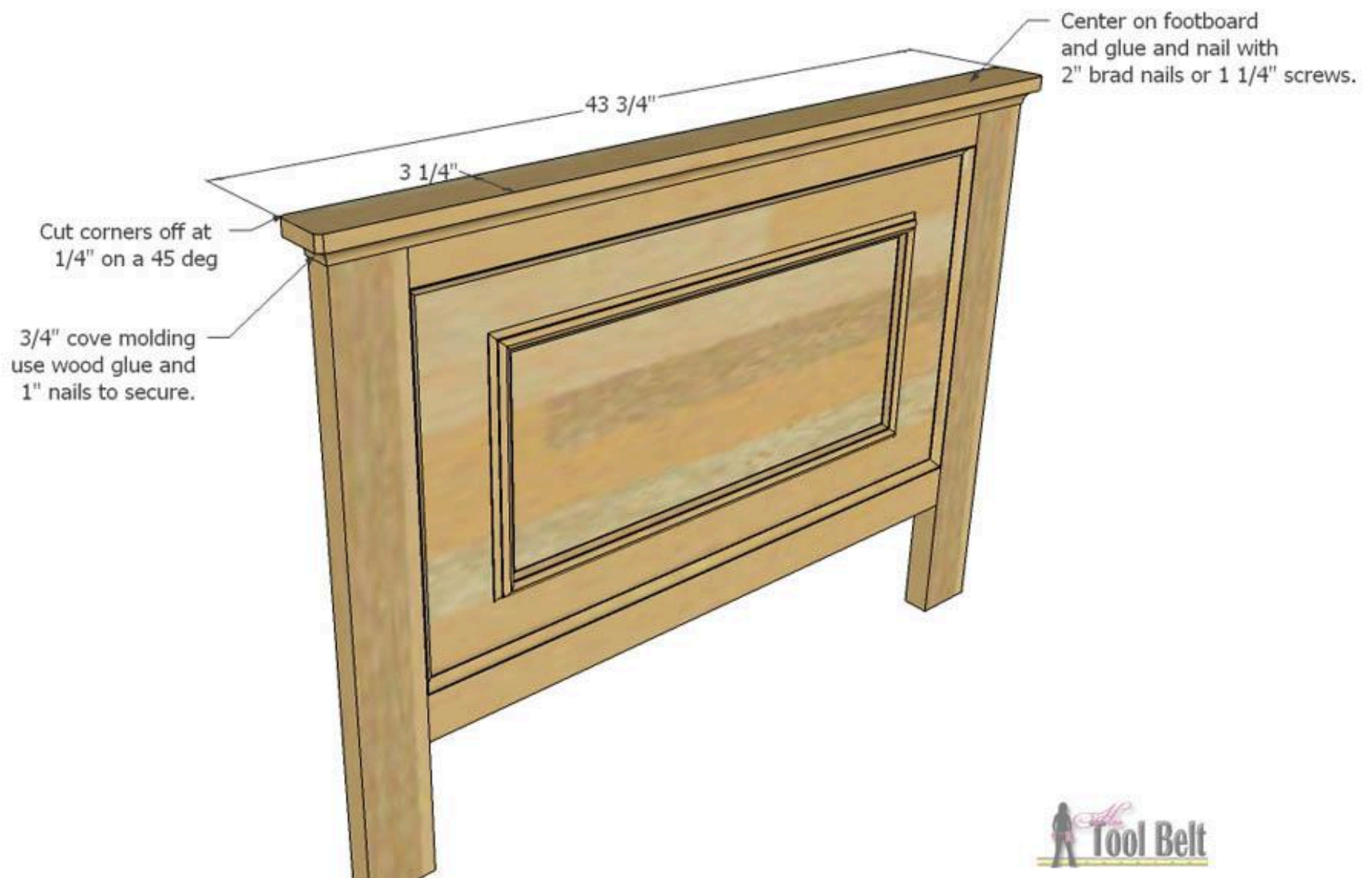


6

Attach Tops

To add a little style, trim $\frac{1}{4}$ " on a 45 deg off of the top board corners. Center the top board on the headboard or foot board then glue and secure with 2" brad nails or $1\frac{1}{4}$ " screws.

Optional top cove molding - cut to fit $\frac{3}{4}$ " cove molding under the top board around the perimeter of the headboard/foot board. Use wood glue and 1" brad nails to secure the molding in place. Cove molding is easy to DIY with a router table and cove router bit.



7**Bed Rail Trim - Optional**

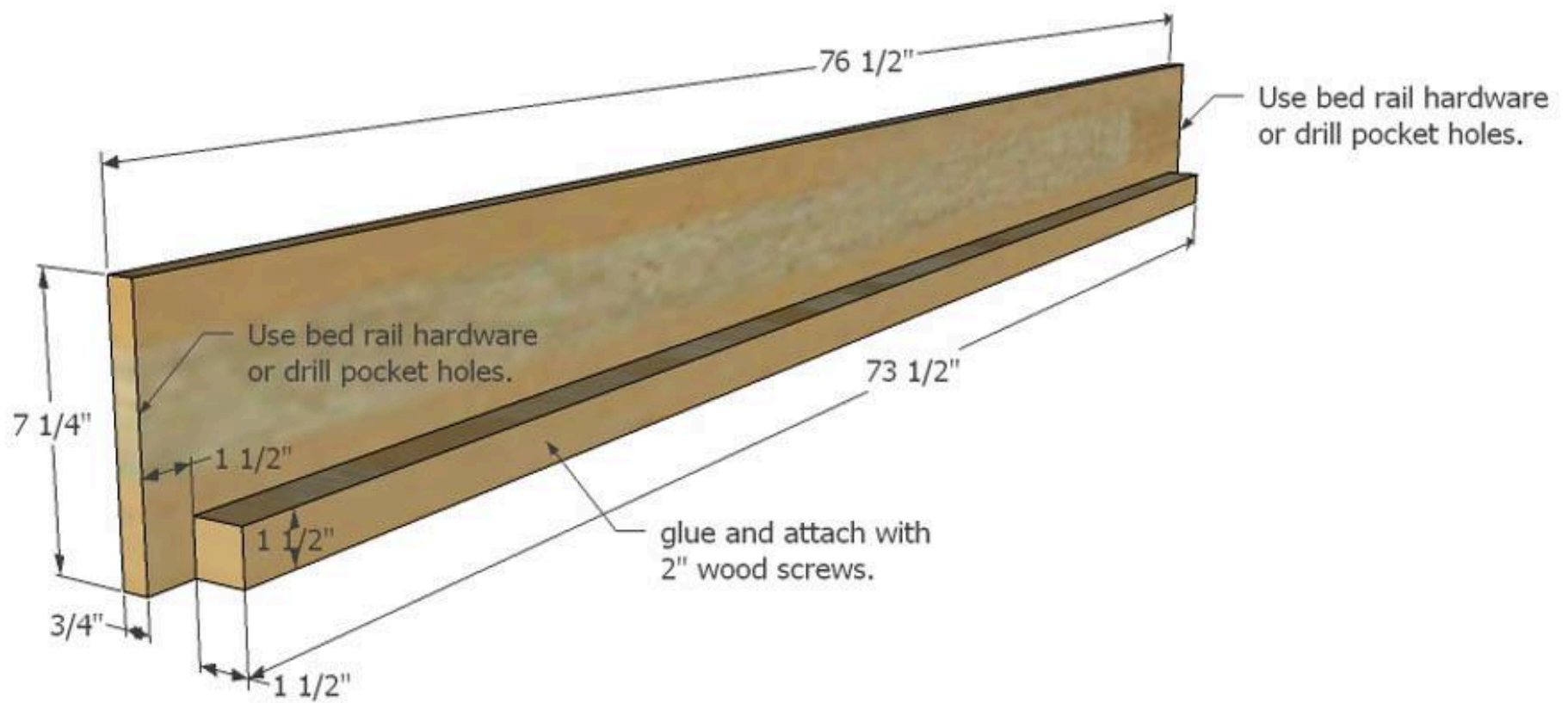
I added some detail to the bed rail by routing a shape on the top and bottom of the bed rail boards. Another idea to add detail would be adding trim/molding to the top and bottom of the bed rail. The bed rail can also be left plain.



8

Bed Rail Assembly

Pre-drill holes in the rail support. If using bed rail hardware, offset the rail support from the bed rail end approximately 1 1/2". Use wood glue and 2" screws to attach the rail support to the bed rail. If using bed rail hardware, attach it to the bed rail, or drill pocket holes in the ends of the bed rails.



9**Bed Assembly**

On the headboard and foot board, measure/mark 10" up from the bottom of the legs and 3/4" in from the outside leg edge. Attach the bed rail hardware to the legs, or secure bed rails with pocket hole screws. (Adjust the bed height to your needs). Evenly spread out the mattress slats across the rail support, if needed, temporarily secure the mattress slats to the rail support with 1 1/4" brad nails. Place a twin mattress on the mattress slats and enjoy!

**10****Apply Finish**

Use wood filler to fill any cracks, nail holes, pocket holes or blemishes and allow to dry. Sand the bed until smooth, finishing with 120-150 grit sandpaper. Paint or stain the bed as desired.