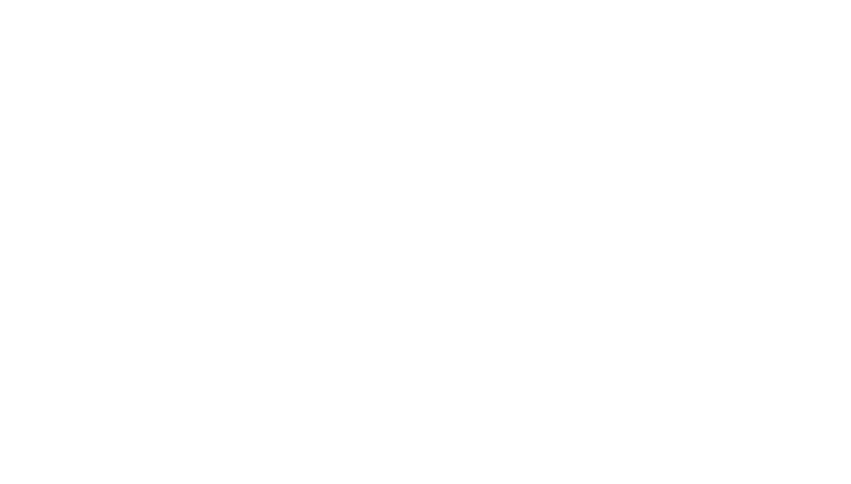
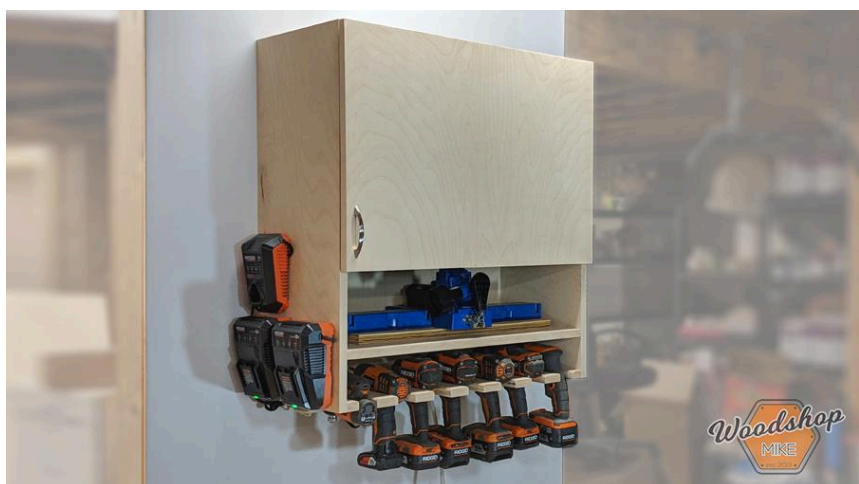
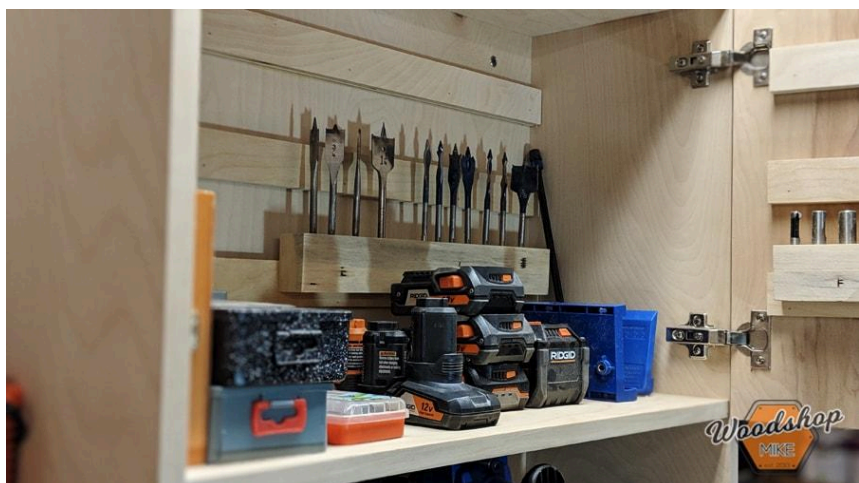
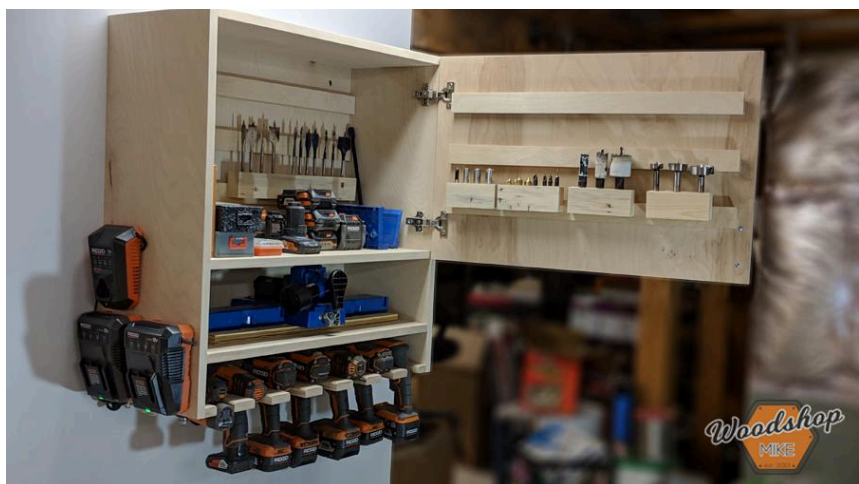


# DIY Drill Storage Cabinet

Difficulty  
Moderate

I've been chasing my drills, bits, and drivers around the shop for far too long. This storage cabinet gives each drill a home and stores all of my batteries and chargers within easy reach. Inside of the cabinet I store all of my bits and drivers with purpose built tool holders.



# Tools

## Kreg Tools

Wood  
Project    [Wood Project Clamp - 6"](#)  
Clamp -  
6

Kreg®  
Pocket-    [Kreg® Pocket-Hole Jig 720](#)  
Hole Jig  
720

Concealed  
Hinge    [Concealed Hinge Jig](#)  
Jig

## Other Tools

Miter Saw

Square

Table Saw

Tape Measure

Bandsaw

Drill (cordless)

Drill Press

Impact Driver

Bar Clamp

Router

Sander

Air Compressor

Shop Vacuum

Workbench

# Materials

## Wood Products

**1**    Plywood , 3/4" Thick , Full Sheet

## Hardware & Supplies

**2**    Euro Style Hinge

**40** 1-1/4" Coarse Pocket Hole Screws

**1**    Handle

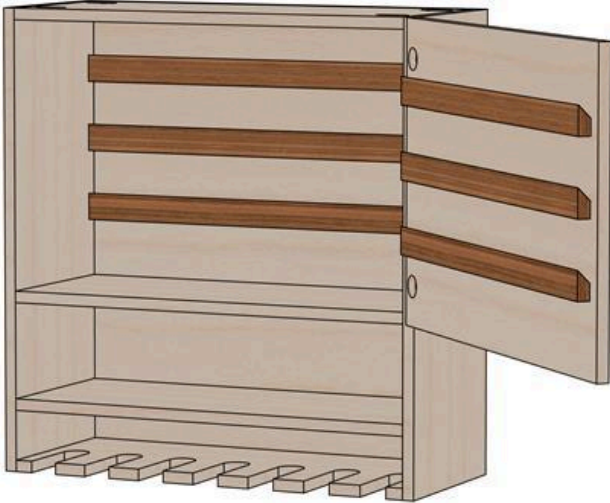
**2**    220 Grit Disc (Optional)

**1**    Edge Banding 26' (Optional)

# Cut List & Parts


- 1 Back , 3/4" X 27-1/4" X 30"
- 3 Top/Shelves , 3/4" X 11" X 27-1/4"
- 2 Sides , 3/4" X 11-3/4" X 30"
- 1 Bottom , 3/4" X 11" X 27-1/4"
- 6 French Cleat , 3/4" X 1-3/4" X 27-1/4"
- 1 Door , 3/4" X 19" X 28-3/4"

TABLE OF CONTENTS	
SHT NO.	DESCRIPTION
1	COVER PAGE
2	CABINET ASSEMBLY
3	PLYWOOD LAYOUT
4	ITEMS 1-3
5	ITEMS 4-6



**DIRECTIONS:**


1. REVIEW ENTIRE PLANS
2. CUT ALL PARTS AS SHOWN ON PAGE 3
3. DRILL POCKET HOLES AND HINGE HOLES AS SHOWN
4. ATTACH TOP TO SIDES
5. ATTACH SHELVES; INSTALL UPPER SHELF FIRST
6. ATTACH BOTTOM
7. INSTALL BACK PANEL; ENSURE CASE IS SQUARE AT THIS TIME
8. INSTALL HINGES AND MOUNT DOOR
9. ADD FRENCH CLEAT AS DESIRED
10. FINISH AS DESIRED
11. HANG ON WALL WITH PREFERED METHOD



JASPER, Ga  
www.woodshopmike.com  
mike@woodshopmike.com

**DRILL CABINET**

ITEM	QTY
3/4" PLY	1
EURO HINGE	2
HANDLE	1
1-1/4" POCKET HOLE SCREWS	40
GLUE	16OZ
1-1/4" BRADS	30



JASPER, Ga  
www.woodshopmike.com  
mike@woodshopmike.com

PROJECT NAME: DRILL CABINET		DRAWING NAME: COVER SHEET	
REV	DATE	BY	DESCRIPTION
A	11/20/18	MP	INITIAL RELEASE

Woodshop Mike, LLC and it's affiliates are not responsible for any damages that may come to persons or properties involved during the creation or use of this project or plans. The use of these plans and construction of this projects is acknowledgement that you as the fabricator assume all liability for proper construction and safe use of the project through all stages.

DWN BY: MP

SCALE:

SHT. NO: 1

Reproduction of this document without the written authorization of Woodshop Mike, LLC is strictly prohibited Copyright 2017 Woodshop Mike, LLC





JASPER, Ga  
www.woodshopmike.com  
mike@woodshopmike.com

PROJECT NAME: DRILL CABINET

DRAWING NAME: PLYWOOD LAYOUT

REV	DATE	BY	DESCRIPTION
A	11/20/18	MP	INITIAL RELEASE

Woodshop Mike, LLC and it's affiliates are not responsible for any damages that may come to persons or properties involved during the creation or use of this project or plans. The use of these plans and construction of this projects is acknowledgement that you as the fabricator assume all liability for proper construction and safe use of the project through all stages.

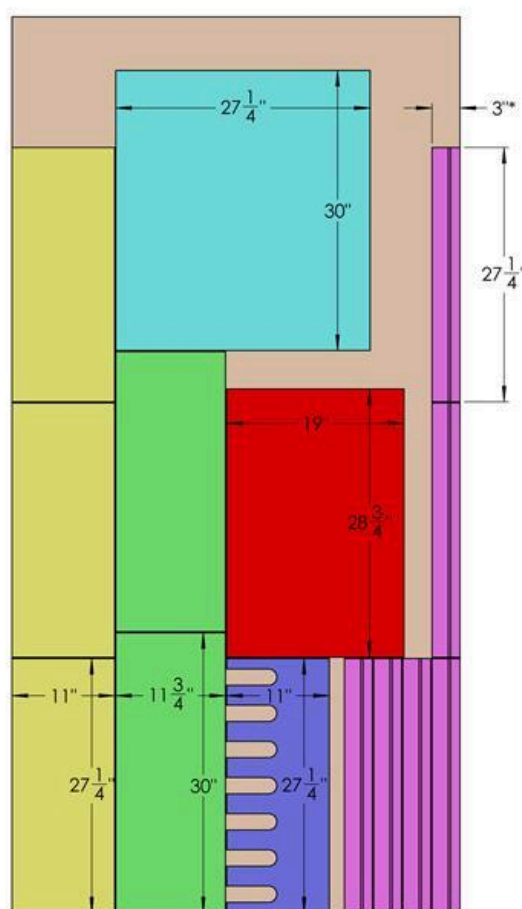
DWN BY:  
MP

SCALE: 1:12

SHT. NO:

3

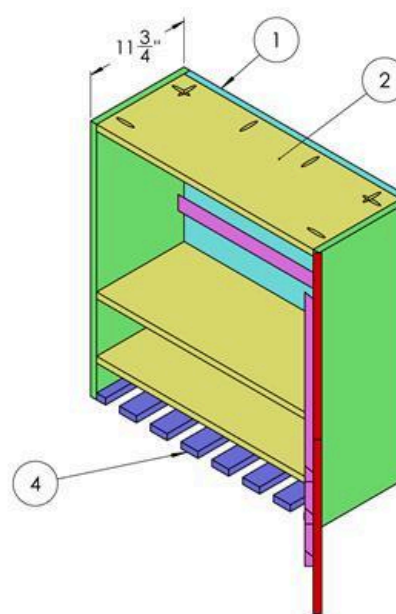
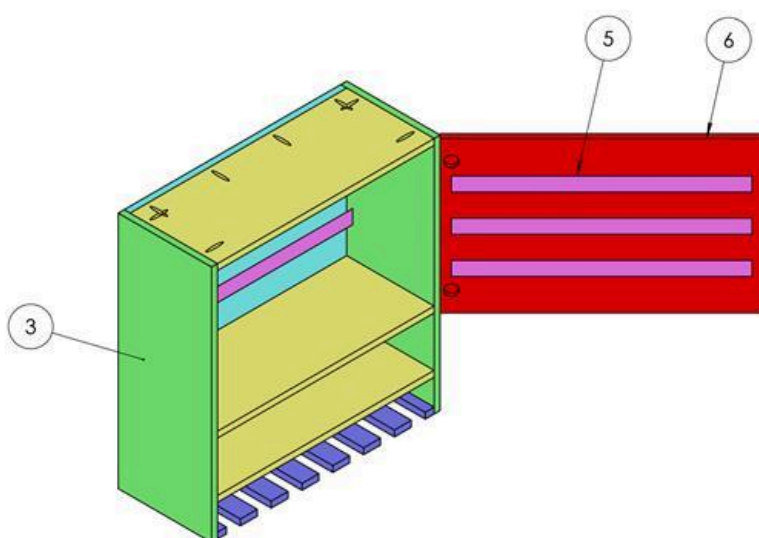
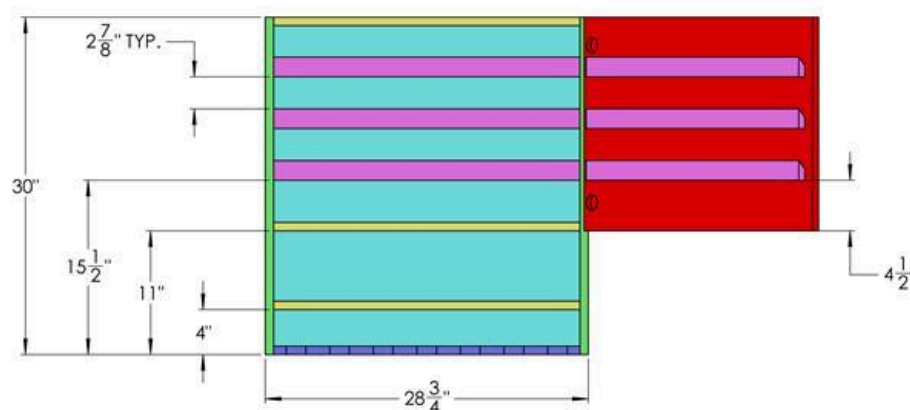
Reproduction of this document without the written authorization of Woodshop Mike, LLC is strictly prohibited Copyright 2017 Woodshop Mike, LLC



NOTE:

\* RIP AS 3" WIDE STRIPS, THEN CUT IN HALF WITH A 45° ANGLE TO MAKE FRENCH CLEAT

ITEMNO	DESCRIPTION	QTY	PAGE
1	BACK	1	4
2	TOP & SHELVES	3	4
3	SIDES	2	4
4	BOTTOM	1	5
5	FRENCH CLEAT	6	5
6	DOOR	1	5



JASPER, Ga  
www.woodshopmike.com  
mike@woodshopmike.com

PROJECT NAME: DRILL CABINET

DRAWING NAME: CABINET ASSEMBLY

REV	DATE	BY	DESCRIPTION
A	11/20/18	MP	INITIAL RELEASE

Woodshop Mike, LLC and it's affiliates are not responsible for any damages that may come to persons or properties involved during the creation or use of this project or plans. The use of these plans and construction of this projects is acknowledgement that you as the fabricator assume all liability for proper construction and safe use of the project through all stages.

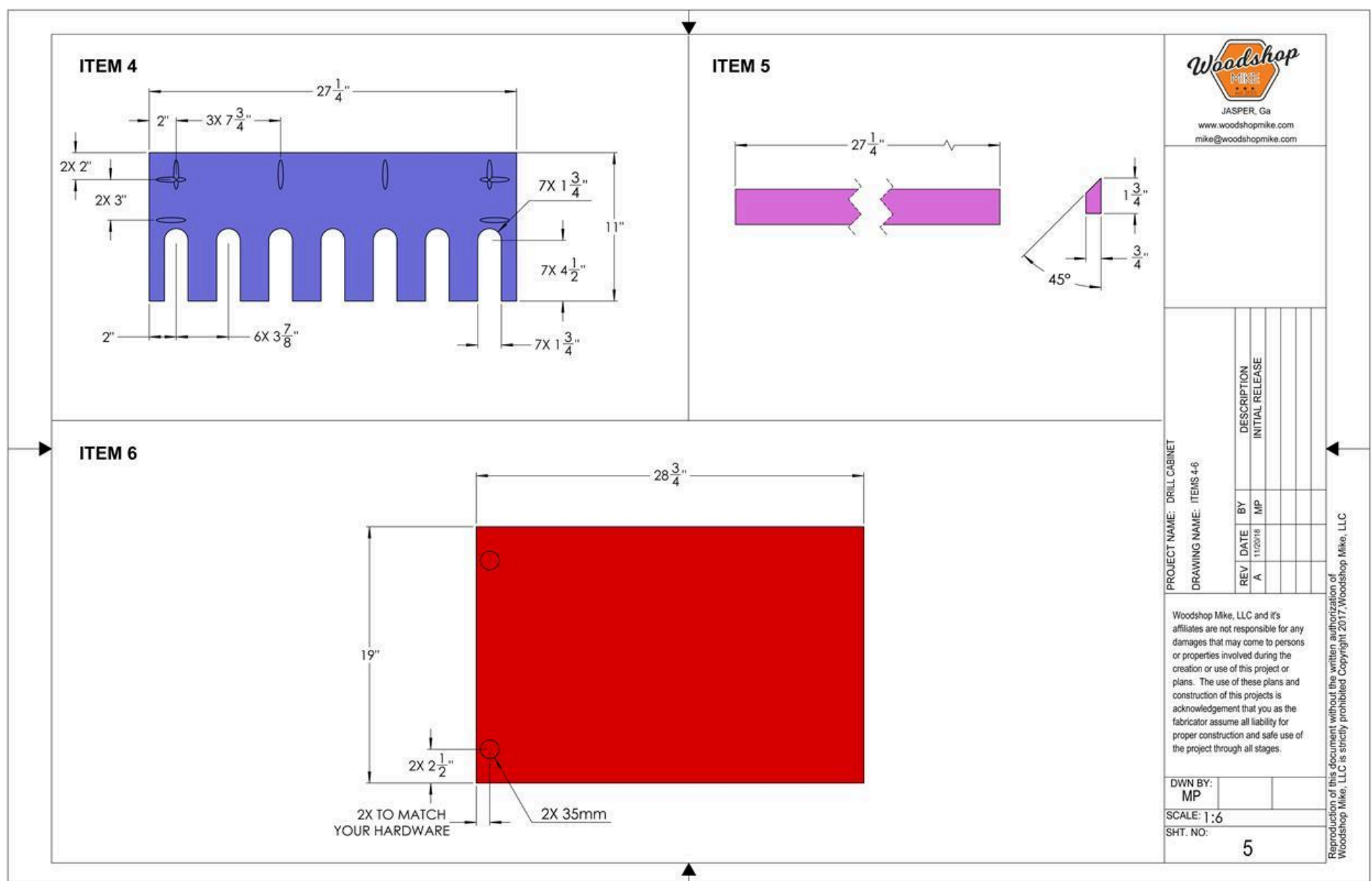
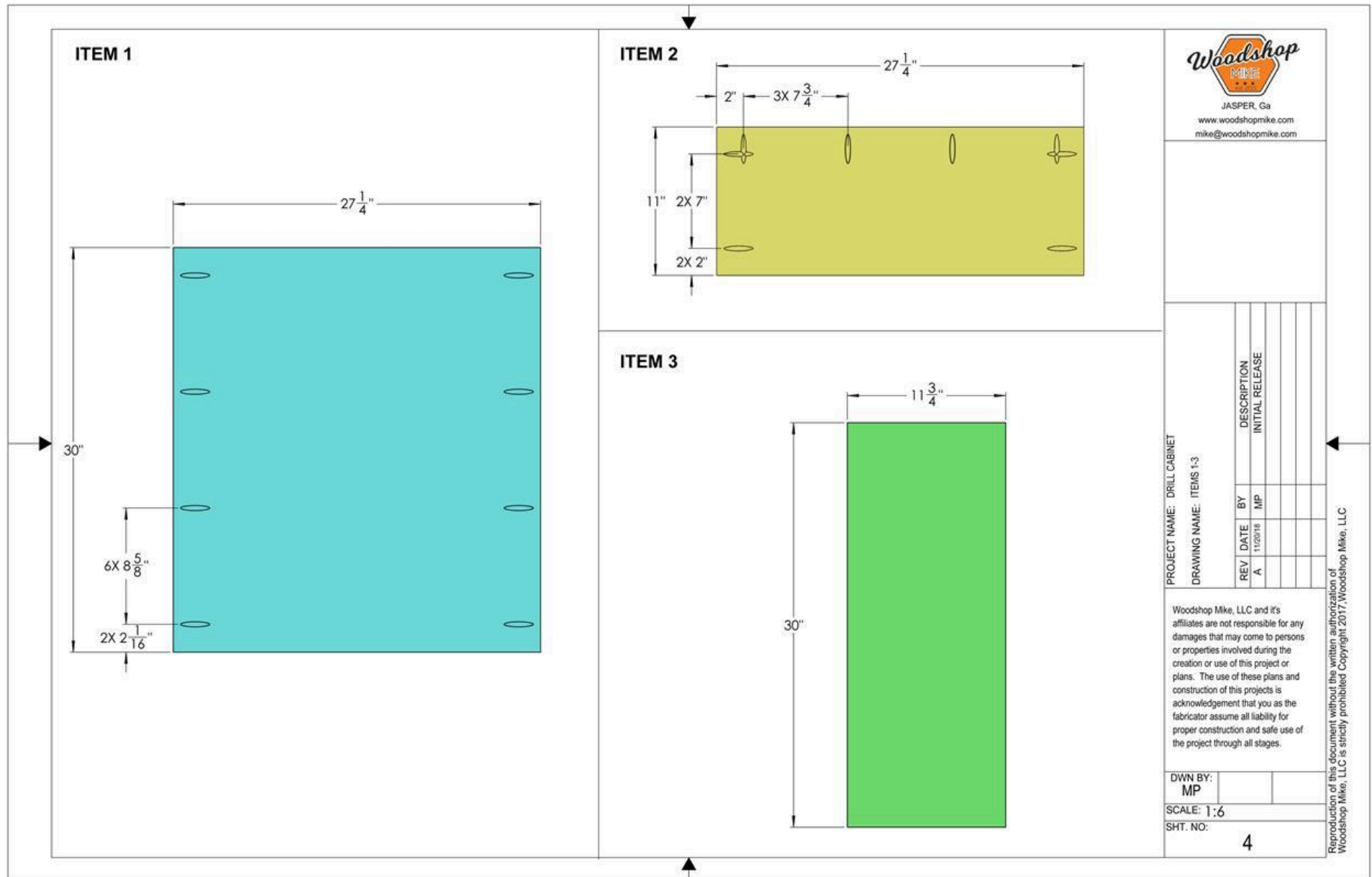
DWN BY:  
MP

SCALE: 1:10

SHT. NO:

2

Reproduction of this document without the written authorization of Woodshop Mike, LLC is strictly prohibited Copyright 2017 Woodshop Mike, LLC



# Directions

---

1

## Cutting Parts

Follow the cut sheet to break down the single sheet of plywood needed for this project.

For the french cleats, I first cut 3" wide pieces at 24-3/4" long. I then set the blade to 45° and ripped them into two equal halves.

I used a table saw and miter saw for this process, but a circular saw could certainly handle this first step with some careful planning!





**2**

## Pocket Holes

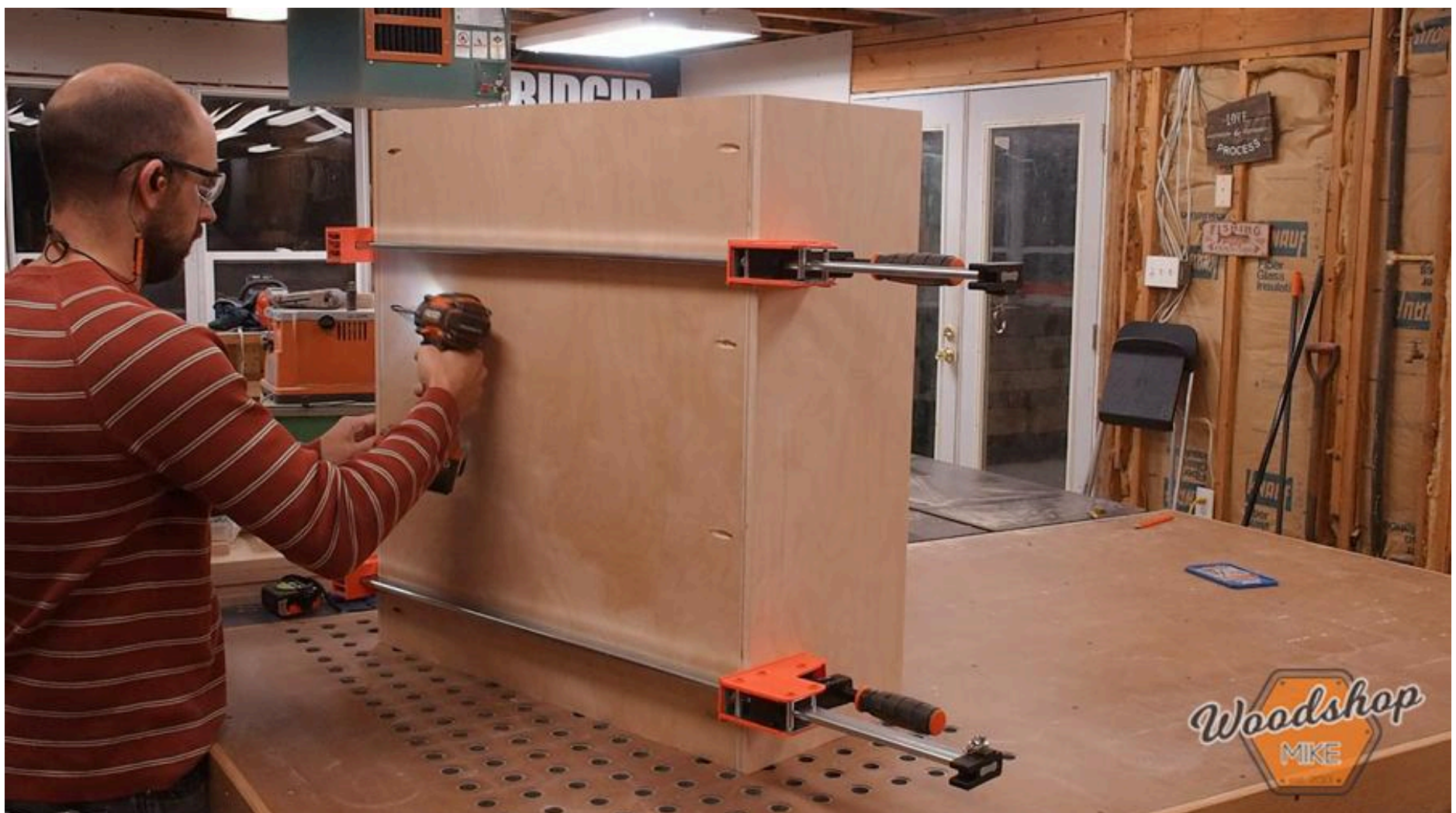
Next I broke out my K5 and drilled pocket holes as detailed in the plans.

**3**

## Attach Back and Sides

For assembly, I used 1-1/4" coarse pocket hole screws. I used bar clamps to hold the cabinet together during the process, but the 90° Corner Clamp or Right Angle Clamp would both work well!

The first step is to assemble the back and sides together.

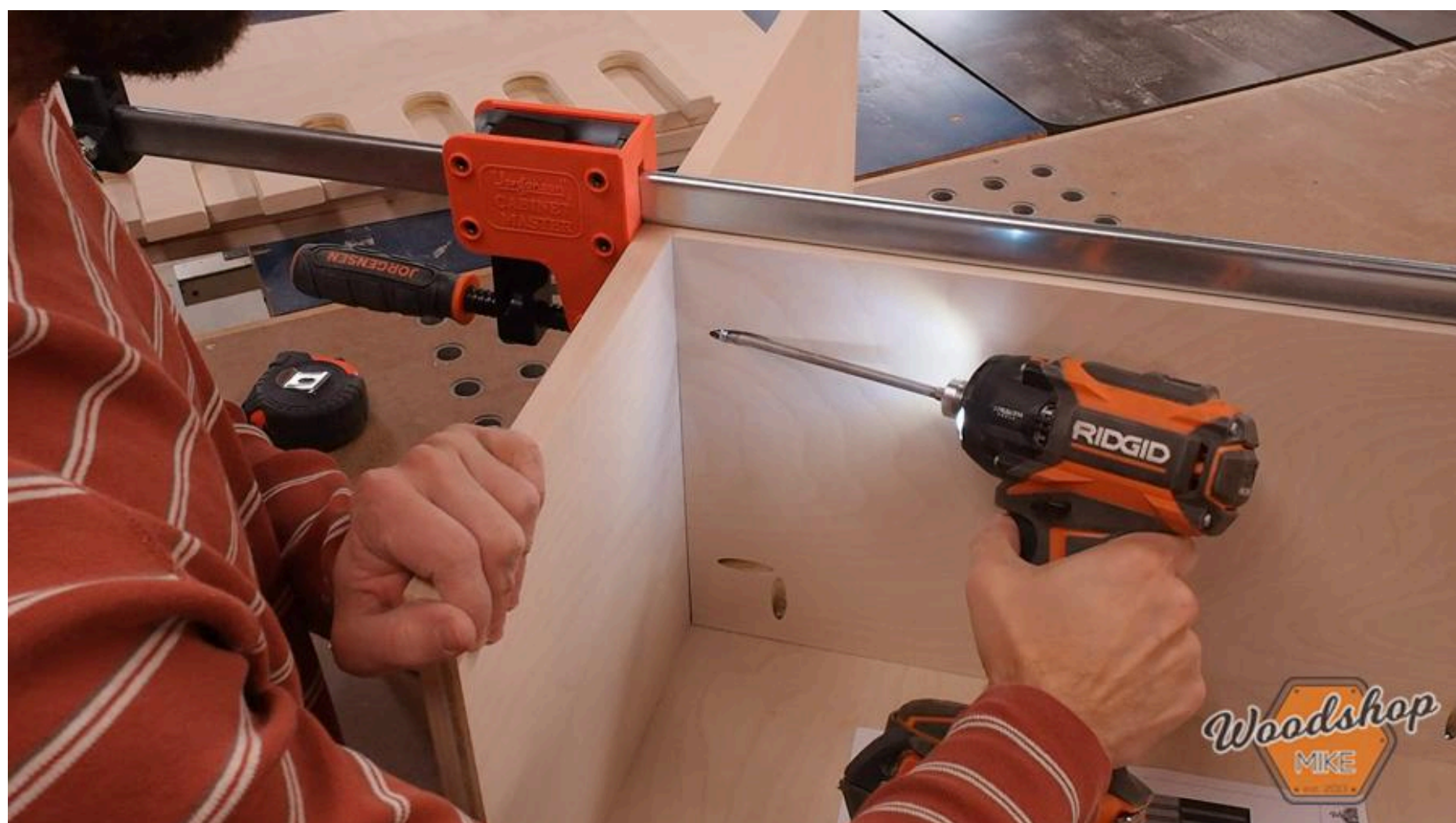




**4**

### Add Shelves

Next I added the shelves as located in the plans.

**5**

### Assemble Top and Drill Holder

Now I'll attach the top with the pocket holes facing up and the drill holder with the pocket holes facing down.





## 6

### Cabinet Hardware

Using my concealed hinge jig, I drill for the cabinet hinges in the door.

With that done, I install the hinges.



# 7

## Install French Cleats

This is the ideal time to install the french cleats in the cabinet and door.

I like to glue and nail these in place with 1-1/4" brads. The location of these cleats is completely up to you. Just make sure the door will close before you secure the cleats on the door!





## 8

### Hanging Cabinet

There are several options to hang this cabinet, but I opted to simply secure it directly into studs.

With my wife's help, we located and secured the cabinet in place with 3" construction screws.

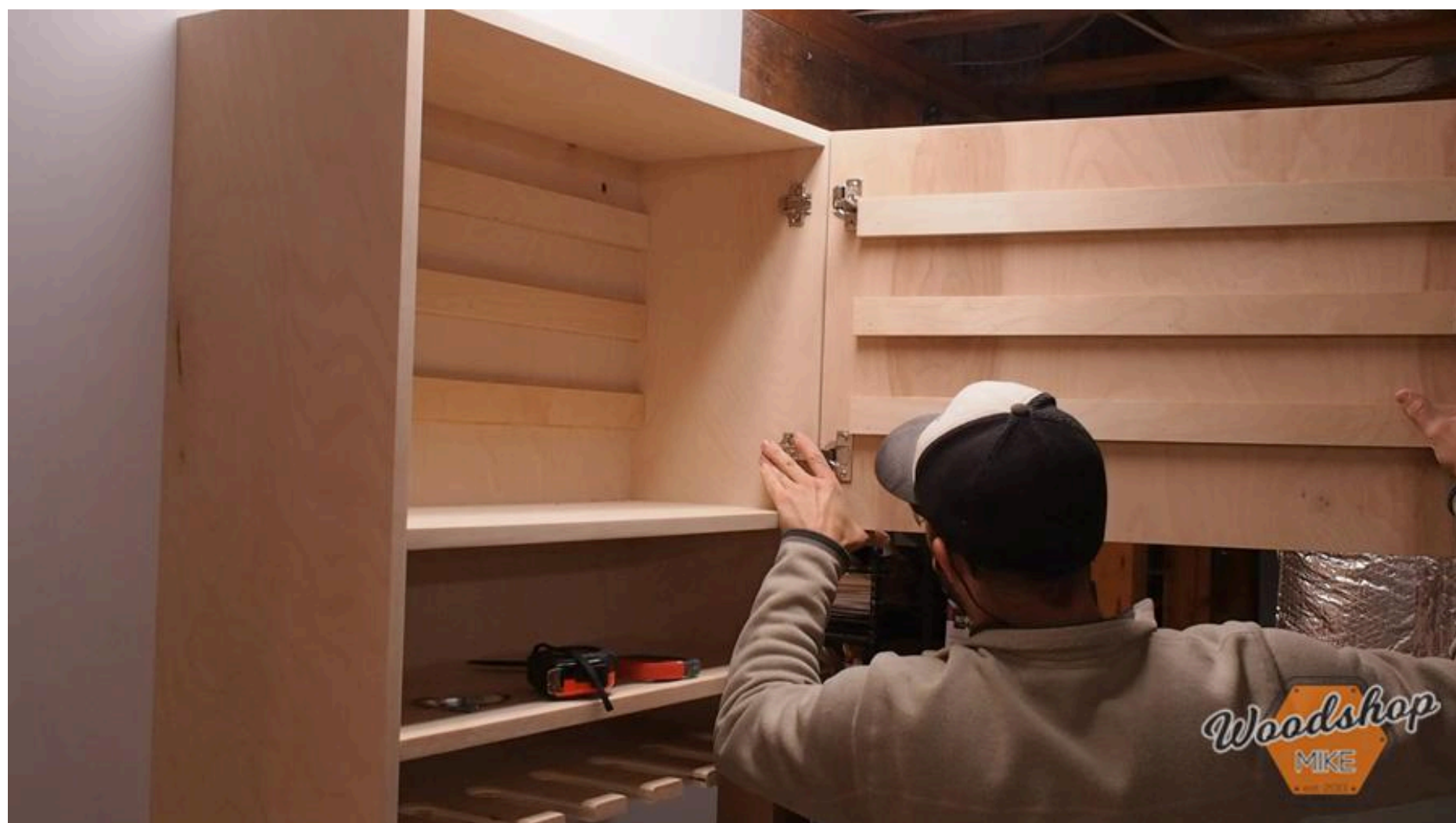


# 9

## Install Door

What I love about the euro hinges is how easy it is to put the doors on. Simply line up the hinge with the mounting clips and snap them into place!

With the door installed, add a handle of your choosing.





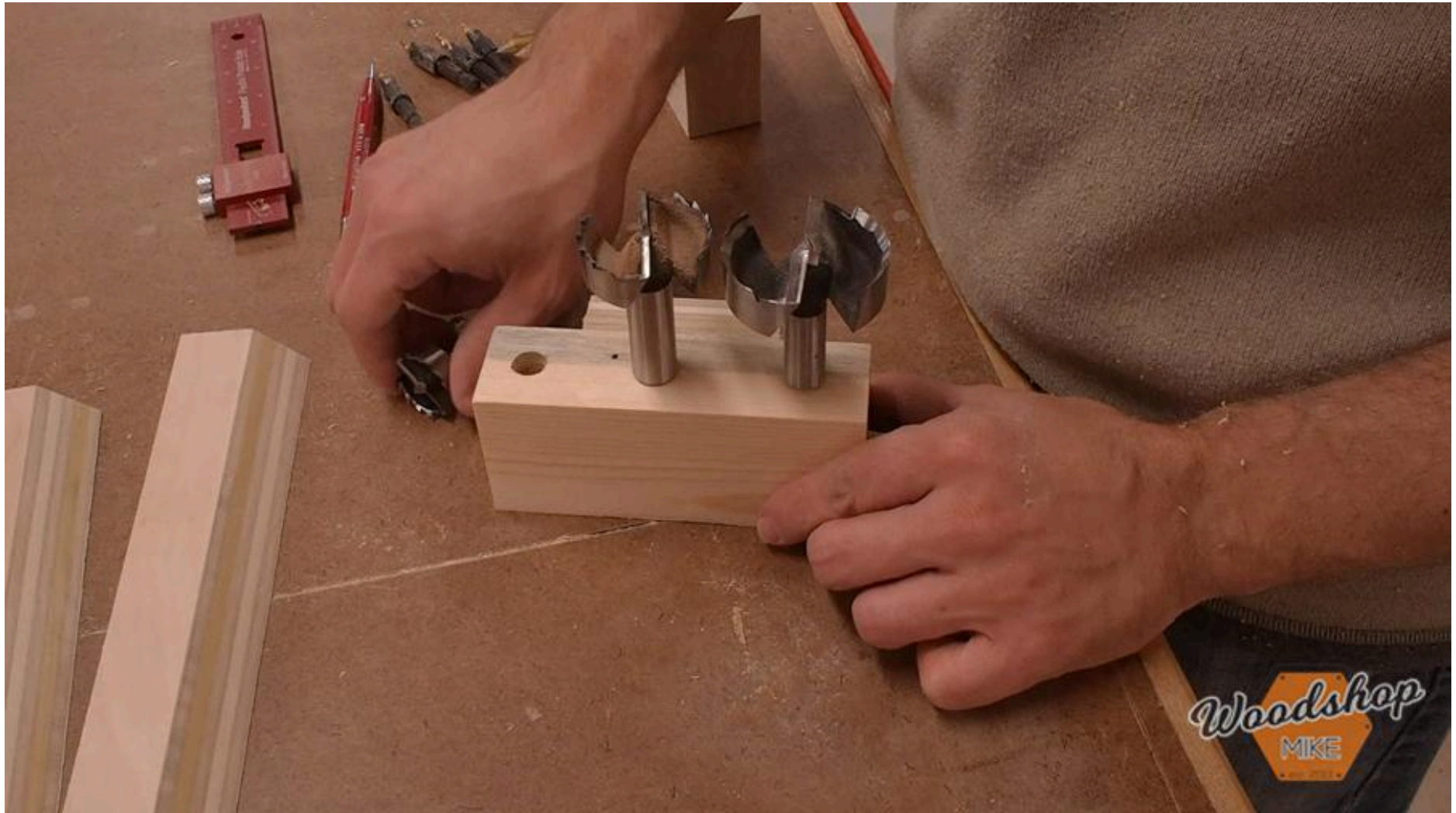
# 10

## Make Tool Holders

These can be as simple or complex as you like.

The simplest tool holder is a block of wood with holes in it to store things like counter sinks, Forstner bits, or any other collection of things you need to organize.

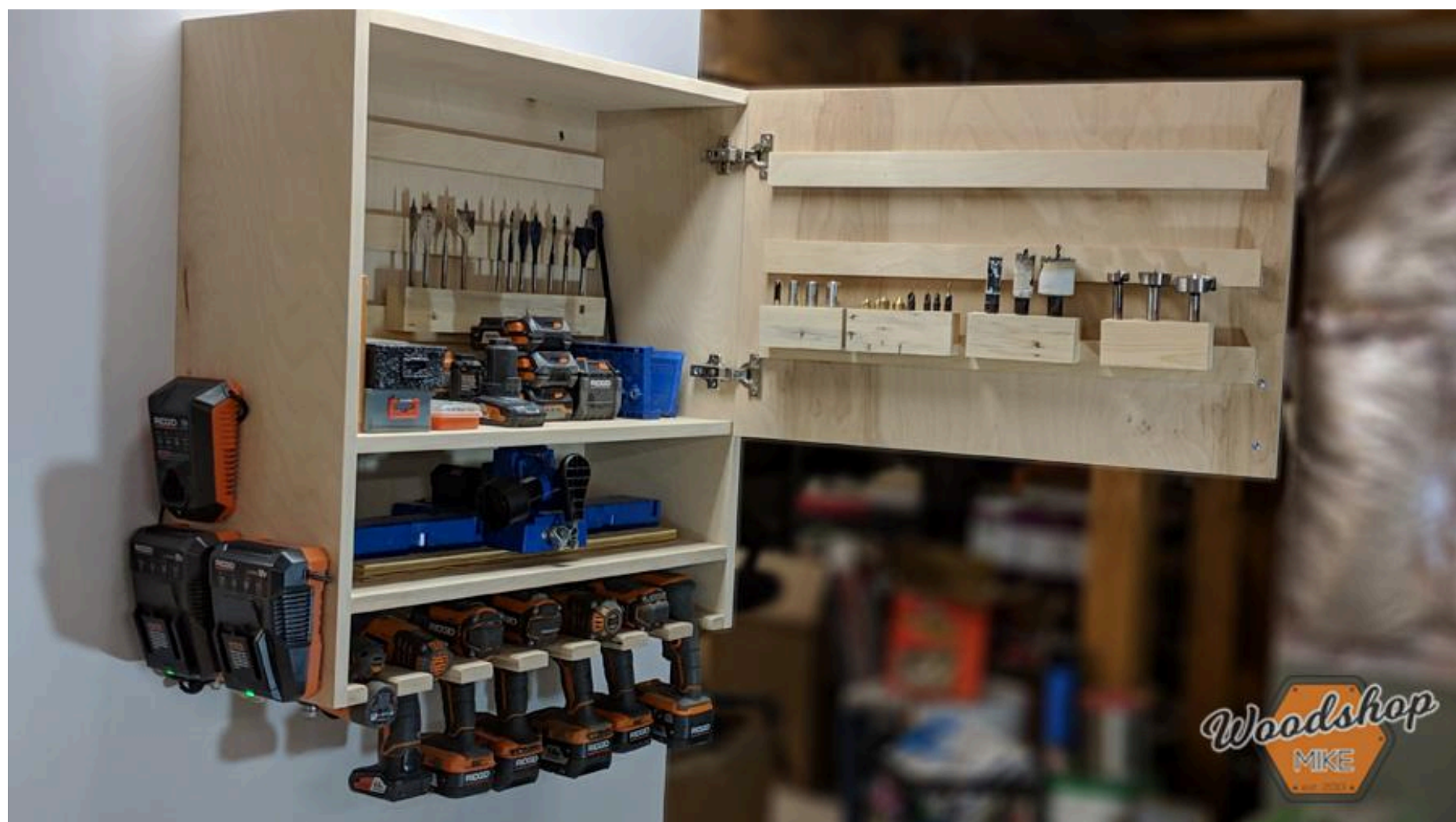
I then use glue and 1-1/4" brad nails to secure these blocks to a piece of French cleat.



**11****Finished!**

The finished cabinet comes in at 30" tall, 28-3/4" wide, and 11-3/4" deep. You can adjust this design to fit just about any space, but these dimensions worked best for me and only used one 4'x8' sheet of 3/4" plywood!

I hope you enjoyed the project. Let me know if you have any questions and until next time, have fun making somethin'!



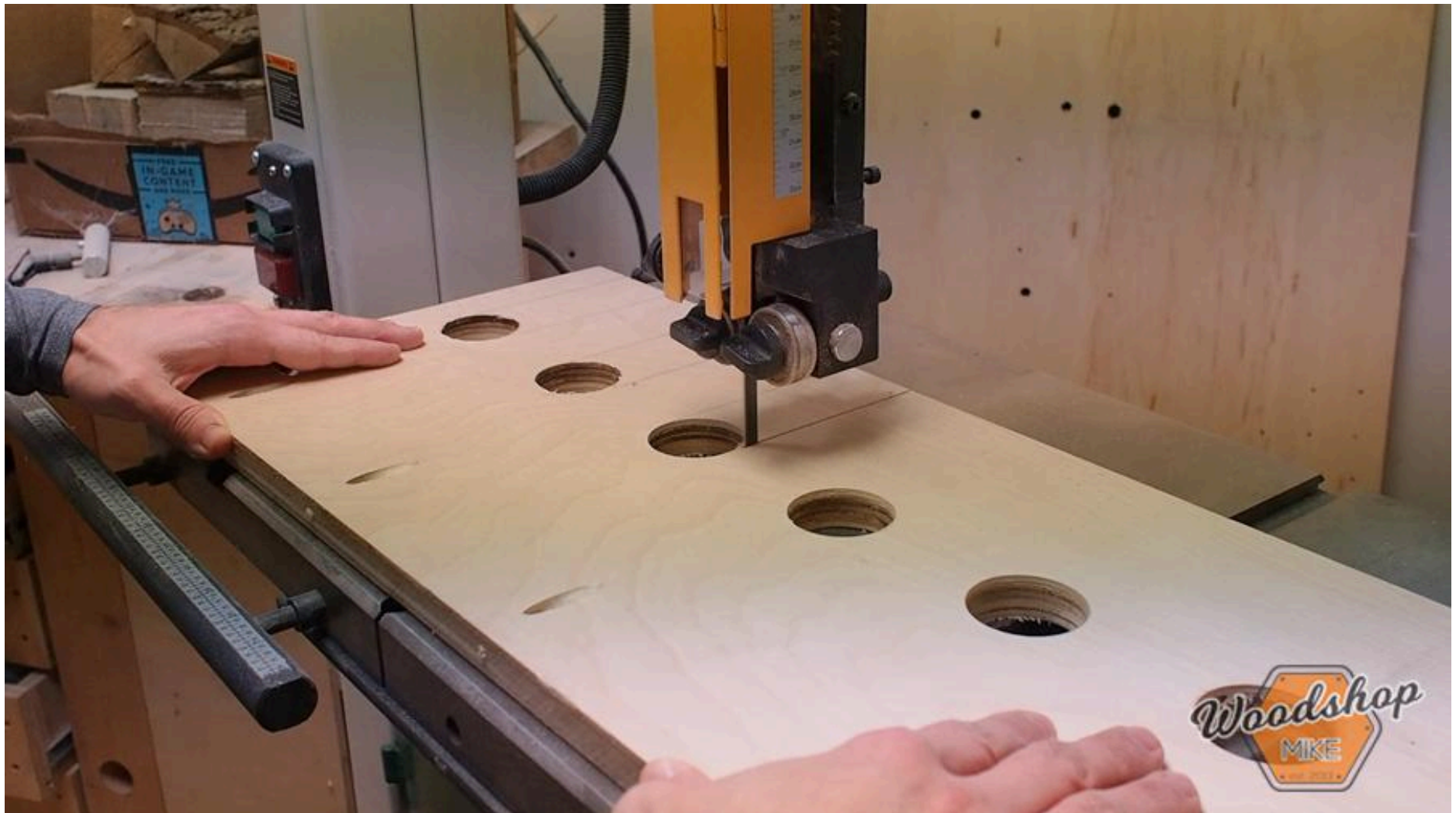


**12**

### Make Drill Holder

I measure out the spacing required for my drills and then drill a 1-3/4" circle at the end of each slot. Next, I make straight cuts to connect the dots.

Make sure to measure the tools you'll be storing and size appropriately for your cabinet!



**13**

### Hinge Mounting Plate

Draw layout lines and transfer the hinge position from the door to inside the cabinet. Then simply run the provided screws into the mounting plate to secure it.



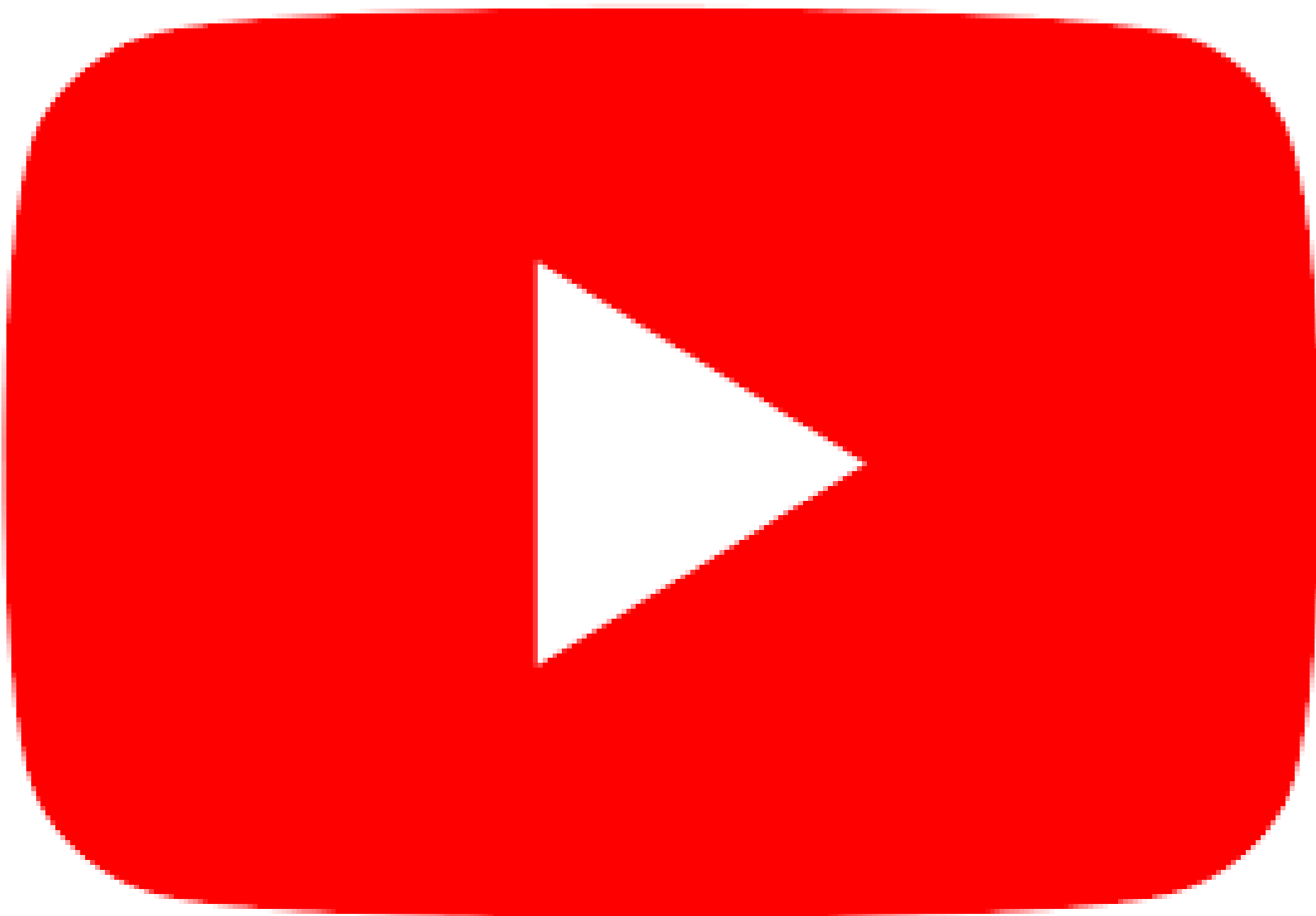


14

### Watch The Video!

Check out my YouTube video to show more of this build!

<https://www.youtube.com/watch?v=8tjL8Gcqcl&t=50s>



15

**Visit [woodshopmike.com](https://woodshopmike.com)**

Go checkout this out to see more pictures of this project! <https://woodshopmike.com/how-to-make-diy-drill-charging-cabinet/>

