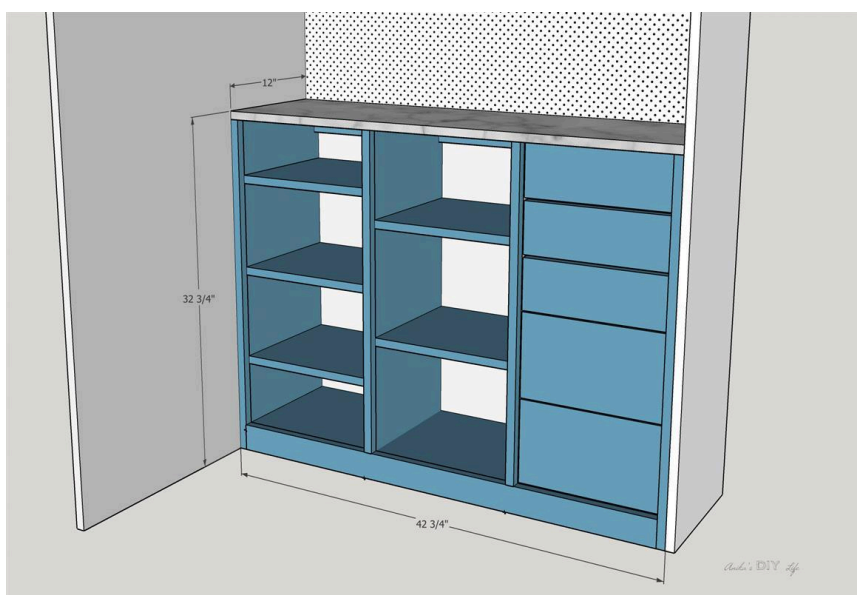


DIY Custom Craft Closet

Difficulty
Moderate

Turn any closet into the craft closet of your dreams with this easy DIY custom craft closet. With multiple drawers and adjustable shelving, it keeps all the craft supplies organized.

This plan is easy to adapt to any closet size. Look for notes in the steps.





Tools

Kreg Tools

- Accu-Cut™
[Accu-Cut™](#)
- Wood Project Clamp - 6"
[Wood Project Clamp - 6"](#)
- Kreg® Pocket-Hole Jig 720
[Kreg® Pocket-Hole Jig 720](#)
- Cabinet Hardware Jig
[Cabinet Hardware Jig](#)
- Drawer Slide Jig
[Drawer Slide Jig](#)
- Shelf Pin Jig with 1/4"
[Shelf Pin Jig with 1/4"](#)

Other Tools

- Circular Saw (cordless)
- Miter Saw
- Table Saw
- Tape Measure
- Drill (cordless)
- Nail Gun
- Shop Vacuum
- Workbench

Materials

Wood Products

- 1 Plywood , 3/4" Thick , Full Sheet
- 1 Plywood , 1/4" Thick , Quarter Sheet
- 2 Board , 1x3 , 96"
- 1 Board , 1x6 , 96"
- 1 Board , 1x5 , 96"
- 1 Board , 1x8 , 48"
- 5 Board , 3/4" X 3/4" , 48"

Hardware & Supplies

- 50 1 1/4" Pocket Hole Screws
- 5 10" Drawer Slides
- 5 Sets Of Shelf Pins
- 5 Drawer Knobs/Pulls

Cut List & Parts

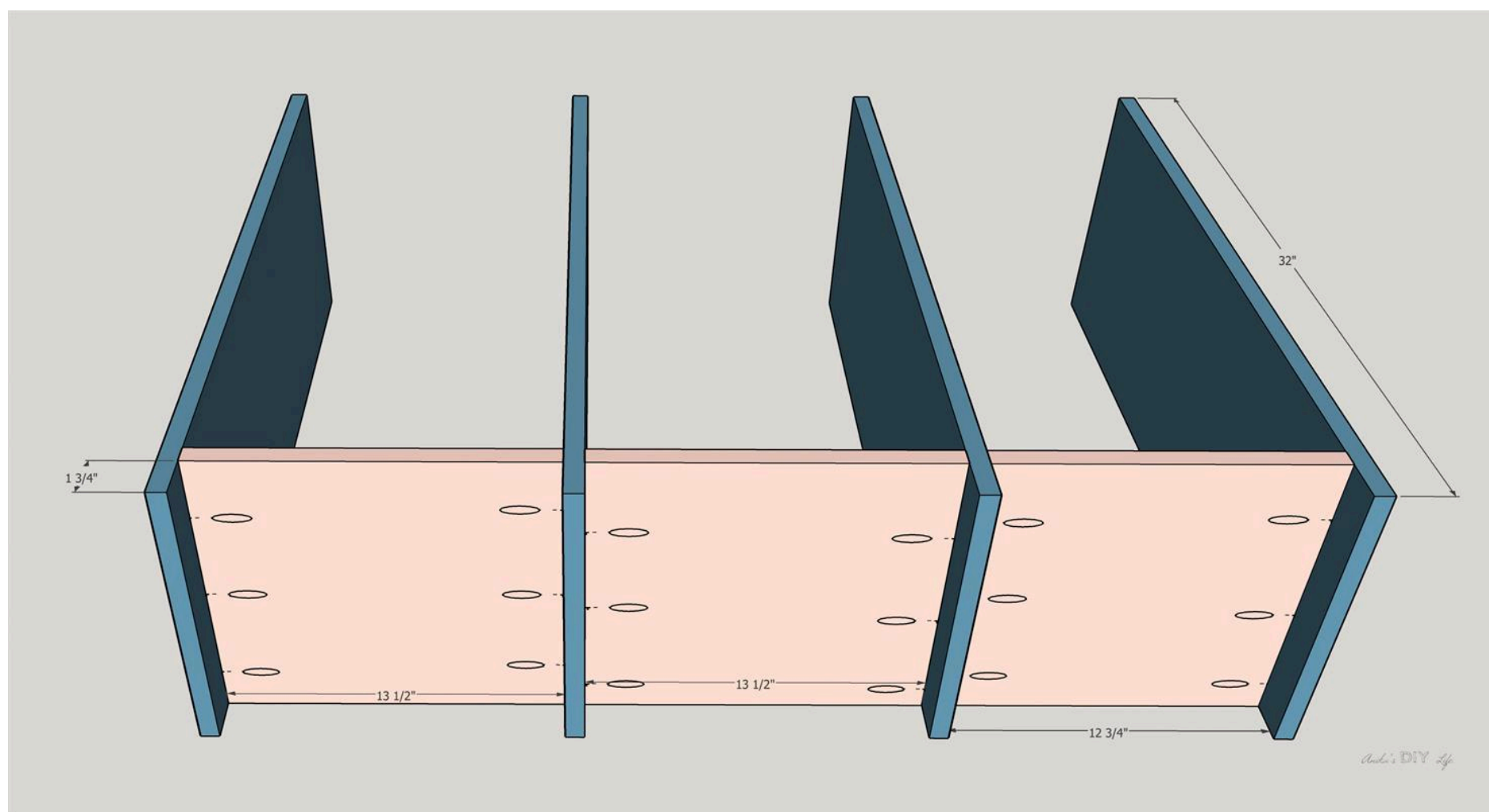
- 1** Top , 3/4" X 13" X 42 3/4"
- 4** Sides , 3/4" X 12 1/4" X 32"
- 2** Base Support 1 , 3/4" X 12 1/4" X 13 1/2"
- 1** Base Support 2 , 3/4" X 12 1/4" X 12 3/4"
- 3** Small Drawer Fronts , 3/4" X 4 1/2" X 12 1/2"
- 2** Large Drawer Fronts , 3/4" X 7 1/2" X 12 1/2"
- 5** Shelves , 3/4" X 12 1/4" X 13 1/2"
- 6** Small Drawer Side 1 , 3/4" X 2 1/2" X 10 1/4"
- 6** Small Drawer Side 2 , 3/4" X 2 1/2" X 11"
- 4** Large Drawer Side 1 , 3/4" X 5 1/2" X 10 1/4"
- 4** Large Drawer Side 2 , 3/4" X 5 1/2" X 11"

Directions

1**Attach base supports**

Build the basic frame by attaching base supports to the sides as shown in the figure. They are 1 3/4" off of the bottom.

Note - I chose to make one of the three sections narrow than the others. But you can make them any width you like. Be sure to cut the base supports and back supports accordingly.

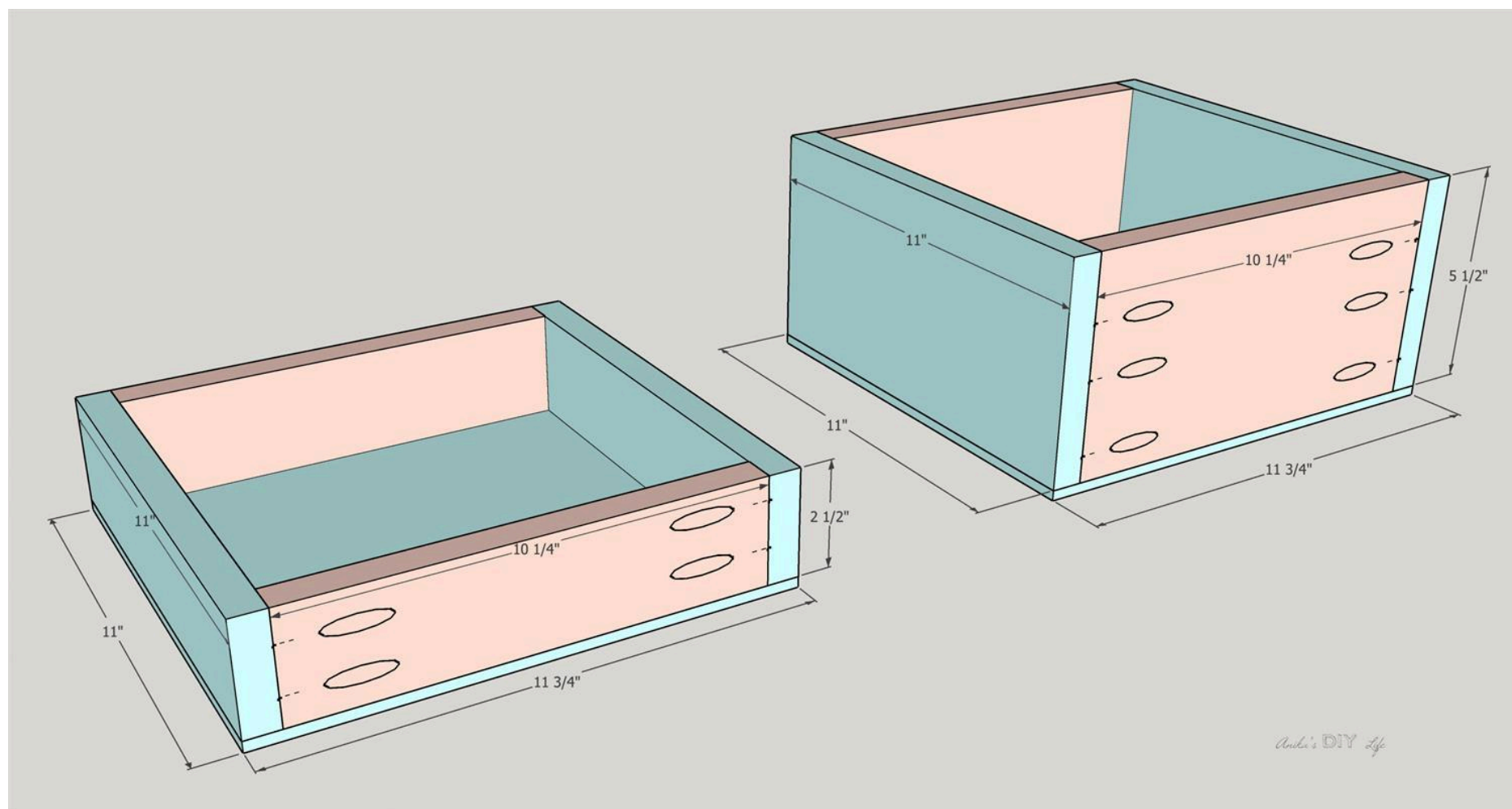


2

Build Drawers

Build 5 drawers using pocket hole screws and wood glue - 3 using 1x3 boards and 2 using 1x6 boards as shown.

The base is 1/4" plywood.



3

Add shelf and drawer slides

Before attaching to the closet, make shelf pin holes using the Shelf Pin Jig.

Also, attach the drawer slides and test the drawers for fit. The Drawer Slide Jig makes this quick and easy.

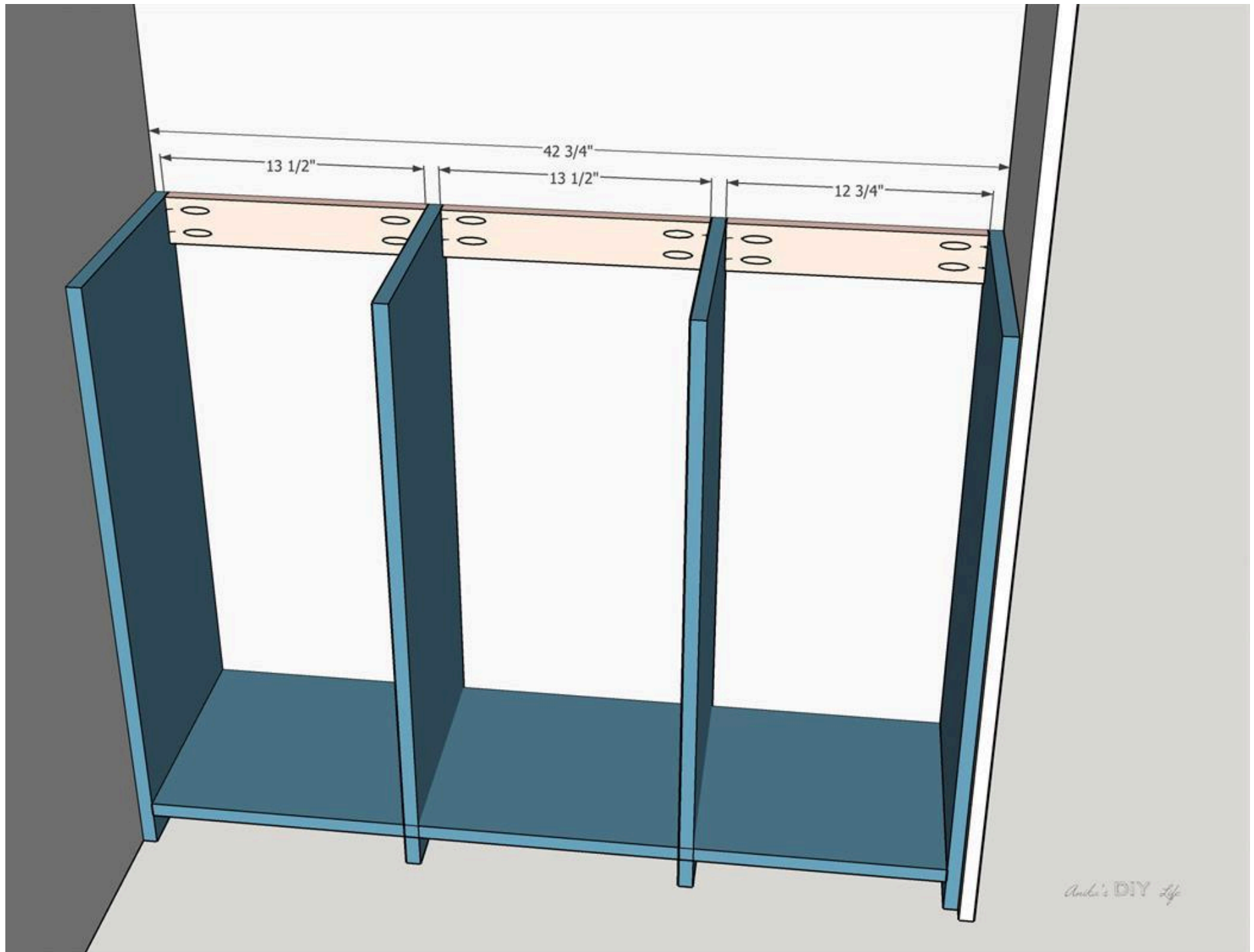
I did this before attaching to the wall because it is easier to clamp jigs and reach in behind the shelves.

4

Attach back support

Attach the organizer to the wall using 1x3 back supports. These supports are attached using 1 1/4" pocket hole screws to the sides.

Use 3" screws to attach the back supports to the studs in the wall.



5**Add the top**

Now add the top and attach using wood glue and 1-1/4" finish nails to the base.

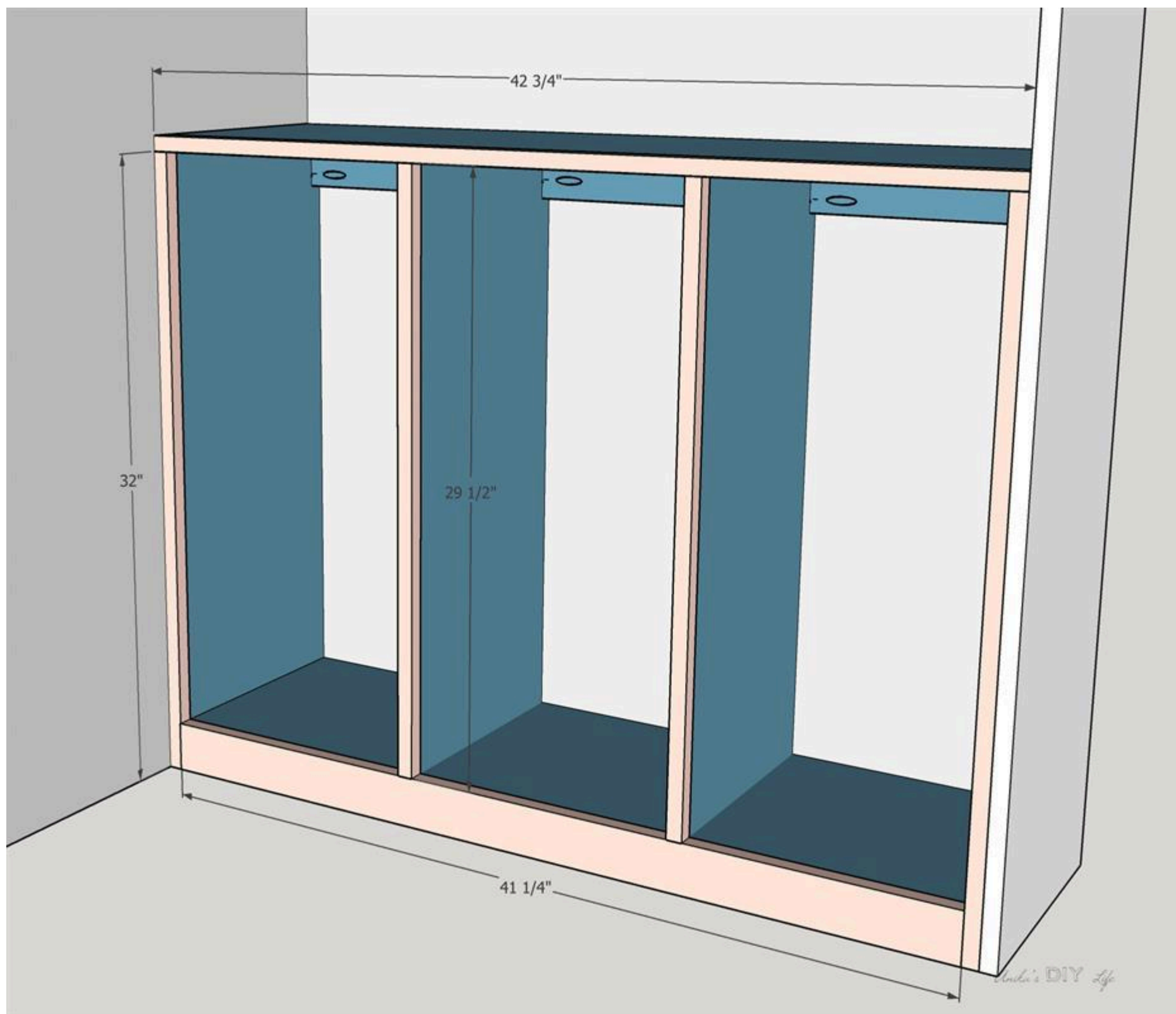


6

Attach trim

Attach 3/4" square dowels as trim along the sides and the top to cover the plywood edges using wood glue and 1-1/4" finish nails.

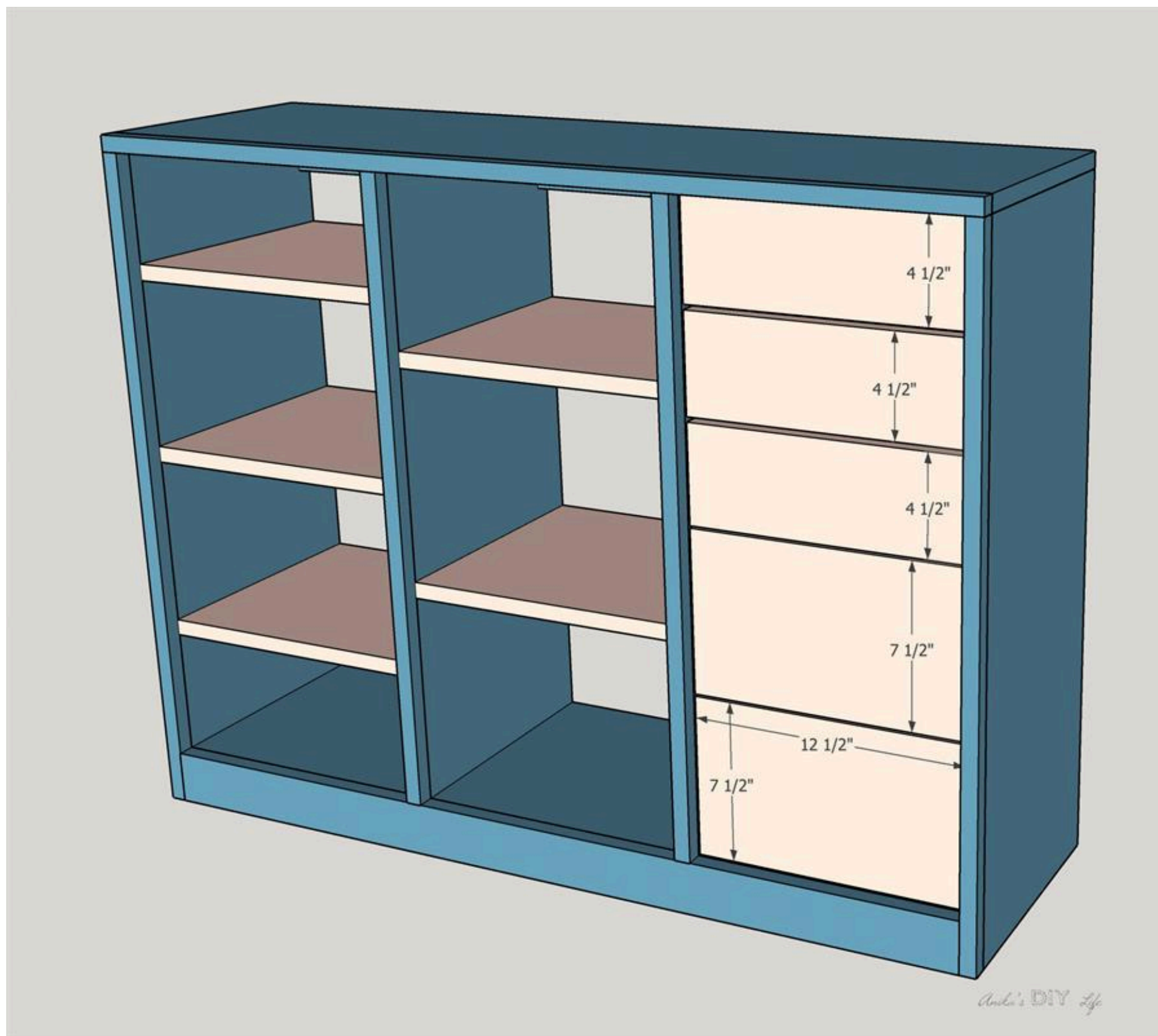
For the toe kick, attach a 1x3 board using wood glue and 1-1/4" finish nails.



7**Add drawer fronts**

Finally, attach drawer fronts to the drawers leaving 1/8" gap on all sides.

Also, add the shelves.



8**Add pegboard (optional)**

If you would like to add a pegboard, mark the studs and attach 1x3 boards using 3" screws into the studs. Attach pegboard to the 1x3 boards using 1 1/4" screws.

**9****Finish the project**

Fill any visible nail holes and sand.

Stain or paint in color of your choice. I decided to add contact paper to the top.

Add drawer pulls or knobs using the cabinet hardware jig.

10

More Details

Check out more details and pictures of the process at - <https://www.anikasdiylife.com/diy-craft-closet-organizer-plans/>
