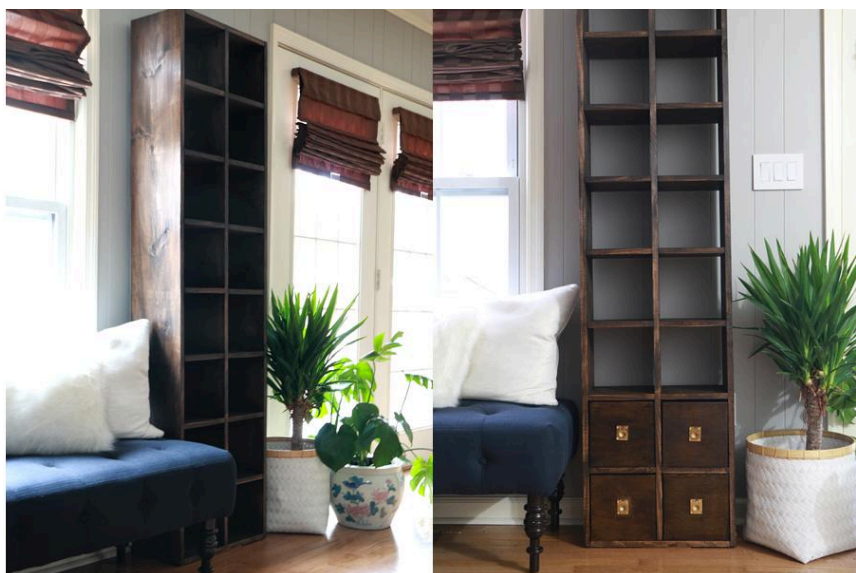


Custom Cube Organizer

Difficulty

Easy

Use these simple plans to create a custom Cube Organizer, or follow these dimensions exactly and pair with my DIY Storage Box for a campaign styled furniture piece(link to tutorial found under "extras" tab)! Use this furniture piece horizontally as a shoe cubby, or even attach legs for a side board!



Tools

Kreg Tools

 [Wood Project Clamp - 6"](#)

 [Kreg® Pocket-Hole Jig 720](#)

Other Tools

Miter Saw

Square

Tape Measure

Drill (cordless)

Sander

Materials

Wood Products

4 Board , 1x10 , 96"

Hardware & Supplies

81 1" Kreg Screws

21 1-1/4" Kreg Screws

1 Wood Filler

1 Stain + Sealer

Cut List & Parts

- 2** Long Sides , 1"x10"x72-3/4
- 1** Middle Shelf , 1"x10"x71-1/4
- 2** Short Sides , 1"x10"x17-1/4
- 14** Shelves , 1"x10"x8-1/4"



Directions

1

Cut Wood To Size

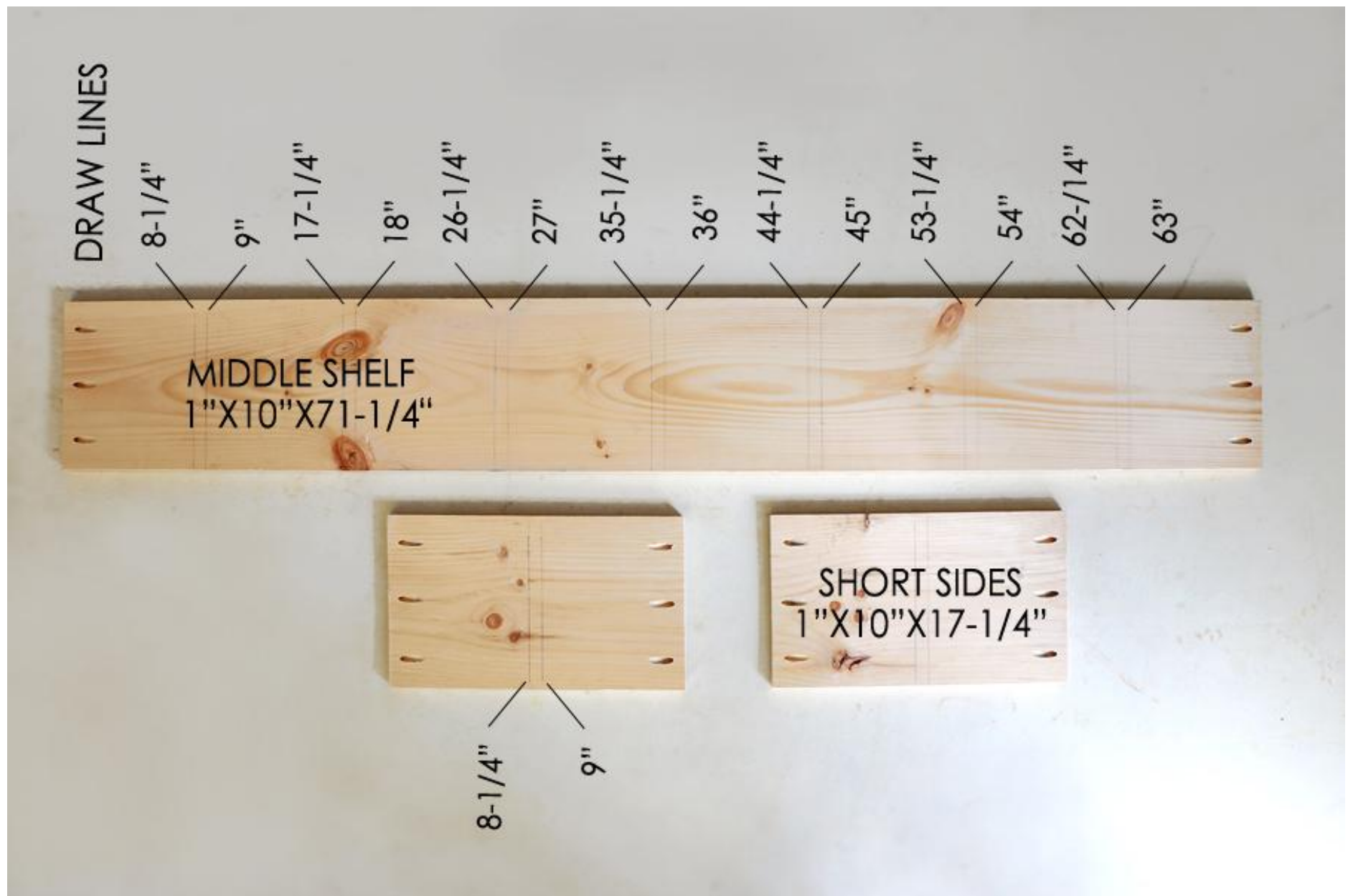
Follow the cut list to get all pieces to size using a miter saw, then sand any rough edges. An optional (and slightly cheaper but more difficult) alternative to 1"x10"x8' boards is to cut pieces from a 3/4"x4'x8' sheet.



2

Drill Pocket Holes & Mark Lines

Drill three pocket holes into either end of the Middle Shelf (1"x10"x71-1/4"), and the two Short Side boards (1"x10"x17-1/4"). Draw lines where the shelves will be placed at the intervals pictured (equates to 8-1/4" intervals with 3/4" between). Place lines on the back and front of the middle shelf, and one side of each short side board.



3

Drill Pocket Holes in Shelves

Next drill three pocket holes into either end of each 1"x10"x8-1/4" shelf. 7 shelves should have consistent pocket holes in the center and edges, the next 7 shelves should be staggered so that the holes are just off center from the first set of 7 pocket holes. This is so screws don't overlap and hit each other.



4**Attach the first 7 Shelves**

Attach the first seven 8-1/4" shelves to the 71-1/4" middle shelf. Use the guide lines you drew.



5**Attach the Next 7 Shelves**

Flip over the middle shelf piece you just worked on. Attach the next seven 8-1/4" shelves (the ones with off-set pocket holes) to the opposite side of the 71-1/4" middle shelf, using the guide lines you drew. Use the longer 1-1/4" Kreg screws for this step...this is why it is important that the pocket holes don't line up, you don't want screws running into each other.



6**Attach Short Sides**

Attach the two short sides (1"x10"x17-1/4") to either end of the unit you have been building. Use the guide lines to center the pieces.



7

Attach Long Side

In order to attach the long sides (1"x10"72-3/4") place it on a flat work surface and place the unit you just assembled on top. Using a right angle screw driver attach both outside ends first, then use a square to ensure each 8-14" shelf is straight and attach those to the long side board below.



8**Attach Final Long Side**

Place the final long side on a flat work surface, and just as before place the unit atop. Attach via either end first, then the 8-14" shelves. Optionally fill holes and paint or stain.

