

Concrete Faux Fireplace

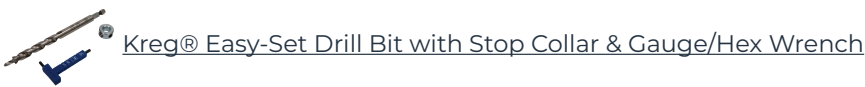
Difficulty
Moderate

How to build a concrete faux fireplace.



Tools

Kreg Tools



Other Tools

Drill

Stud finder

Razor knife

Concrete trowel

Nail gun

Tape measure

Pencil

Materials

Wood Products

- 2 Pine Boards , 16' - 2"x12" (Cut List To Follow On Diagram)
- 1 Cement Board
- 4 Metal Corner Bead , 1 1/4" X 8'
- 1 Primed Mdf Board (For Baseboard) , 8' - 1" X 6"
- 1 Primed Mdf Board (For Trim On Top Of Fireplace) , 8' - 1" X 2"

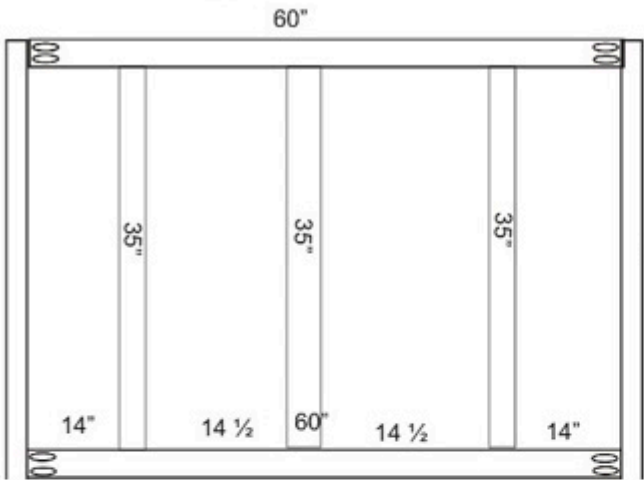
Hardware & Supplies

- 1 Box Of 2 1/2" Kreg Pocket Hole Screws (See Tool List)
- 1 Wood Glue
- 1 Box Of Cement Board Screws
- 1 Premixed Bucket Of Mortar
- 1 Sanding Block 120 Grit
- 1 Box Of 2" Brad Nails

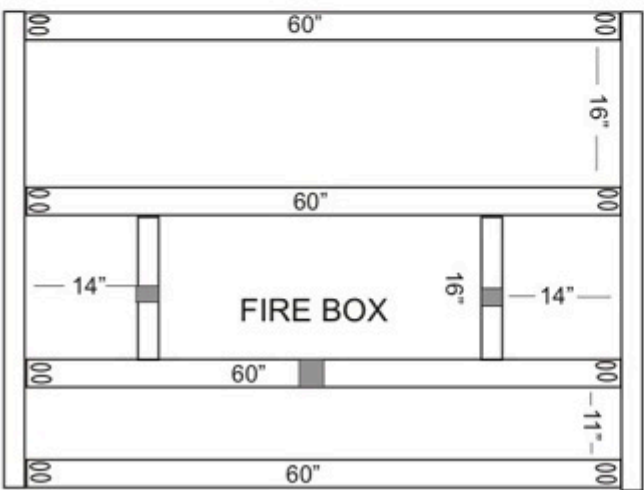
Cut List & Parts

- 11 Boards , 2.5" X 60"
- 2 Boards , 2.5" X 95.5"
- 5 Boards , 2.5" X 16"
- 6 Boards , 2.5" X 6"
- 2 Boards , 2.5" X 52.5"
- 2 Boards , 2.5" X 43"
- 3 Boards , 2.5" X 38"

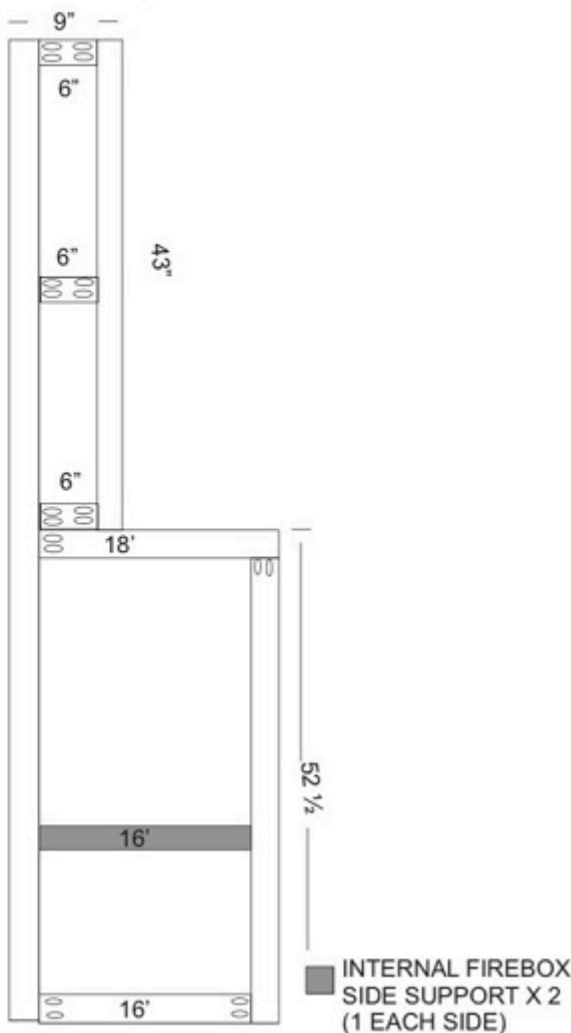
FRONT FACE UPPER



FRONT FACE W/ FIRE BOX



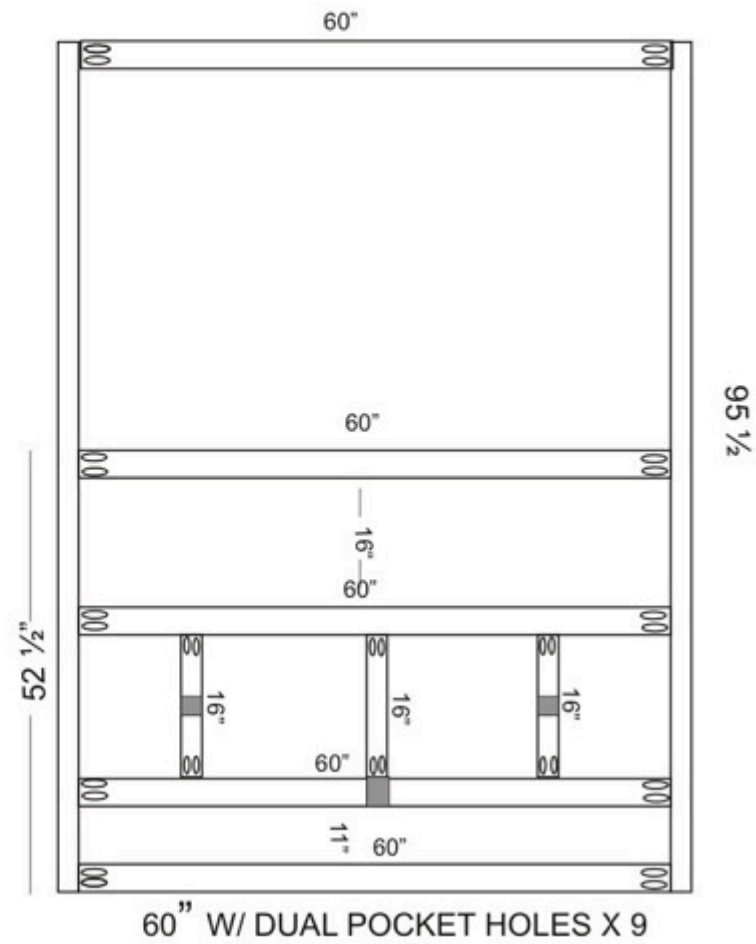
LEFT SIDE (REVERSE FOR RIGHT SIDE)



INTERNAL FIREBOX
SIDE SUPPORT X 2
(1 EACH SIDE)

CONCRETE FAUX FIREPLACE

ATTACHED TO BACK WALL
(REAR FRAME FACE)



- POCKET HOLE
- CUT ALL BOARDS TO LENGTH
- DRILL POCKET HOLES
- ATTACH BACK WALL FRAME
- BUILD FRONT FRAME FACE
- CONNECT FRONT FACE TO BACK W/ 16" SUPPORTS
- ATTACH UPPER FRONT FACE WITH 6" SUPPORTS
- COVER WITH HARDY/GOBOARD (USE DRYWALL TIN CORNER EDGING FOR ALL EDGES BEFORE CEMENTING SURFACES)



Directions

1

Rip pine boards

Start by ripping the pine boards into 2 1/2" boards. (All boards should be 1 1/2" x 2 1/2")

2

See diagram for cut list.

Cut each board to length using the framing diagram provided.

3

Drill pocket holes

Drill all of the pocket holes and assemble the frame per the diagram description.

4

Attach frame to wall

Attach the frame to the wall. Be sure to attach it directly to studs or use the proper anchors to attach it safely.

5

Wrap frame with cement board

Begin wrapping the whole frame with cement board. Be sure to install the metal corner bead on the corners after all of the cement board is installed. This will ensure nice, clean lines all around the edge of your fireplace.

6

Skim coat

Now it's time to skim coat the fireplace using pre-mixed mortar and a trowel. I did 3 coats total and I let each coat dry at least 12 hours before applying the next.

7

Sand

Once dry, knock down any super rough patches or blemishes in the mortar using the 120 grit sanding block.

8

Install baseboard

Use the 1"x6" mdf board to install a baseboard on the bottom of the fireplace using the nail gun and 2" brad nails. Be sure to caulk along the edges.

9

Install top molding

Use the 1"x2" mdf board to install the molding on the top of the fireplace. Be sure to caulk along the edges again.

10

Finish

Time to paint & decorate!
