

# Custom Walnut Double Sink Vanity (72")

Difficulty

Advanced

This custom walnut vanity has a definitely luxurious feel with its rich walnut wood grain, double sink, and 6 spacious drawers for ample storage. The long bottom shelf can be used for storing towels and/or baskets with items tucked inside. This is a build you'll be proud of!



# Tools

## Kreg Tools



[Kreg® Pocket-Hole Jig 720PRO](#)



[Precision Miter Gauge](#)



[Drawer Slide Jig](#)

## Other Tools

Table Saw

60 T ATB Blade

Dado Stack

Track Saw

Mortiser

3/8" Chisel

Planer

Router

¼" Spiral upcut blade

Drill/Impact Driver

Chisels

Mallet

# Materials

## Wood Products

- 1 Walnut Boards (See Dimensions) , 12/4 , 10.25 Bd FT
- 1 Walnut Boards (See Dimensions) , 4/4 , 30.89 Bd FT
- 1 Plywood Sheet , 1/2" Walnut (MDF Core)

## Hardware & Supplies

- 1 Stain/Finish

# Cut List & Parts

- 4** Legs , 2 1/4 X 2 1/4 X 32 13/16" - 12/4 Walnut
- 2** Top Rail, Sides , 3/4 X 1 3/4 X 18 1/2" - 4/4 Walnut
- 2** Mid Rail, Sides , 3/4 X 1 5/8 X 18 1/2" - 4/4 Walnut
- 2** Bottom Rail, Sides , 3/4 X 1 5/8 X 18 1/2" - 4/4 Walnut
- 2** Panel Side , 1/2 X 16 1/4 - 1/2" Plywood
- 1** Top Rail, Front , 3/4 X 1 3/4 X 69 1/2" - 4/4 Walnut
- 3** Mid & Bottom Rail, Front , 3/4 X 1 5/8 X 69 1/2" - 4/4 Walnut
- 4** Stile, Front , 3/4 X 1 7/8 X 7" - 12/4 Walnut
- 1** Top Rail, Back , 3/4 X 1 3/4 X 69 1/2" - 4/4 Walnut
- 1** Mid Rail, Back , 3/4 X 1 5/8 X 69 1/2" - 4/4 Walnut
- 1** Bottom Rail, Back , 3/4 X 1 5/8 X 69 1/2" - 4/4 Walnut
- 1** Panel, Back , 1/2 X 16 1/4 X 68 1/8 - 1/2" Plywood
- 1** Panel - Mid-shelf , 1/2 X 19 1/8" 69 7/8" - 1/2" Plywood
- 2** Shelf Support Front/Back , 3/4 X 3/4 X 67 1/2" - 4/4 Walnut
- 2** Shelf Support Side , 3/4 X 3/4 X 16 1/2" - 4/4 Walnut
- 1** Bottom Shelf , 3/4 X 20 7/8" 71 3/4" - 4/4 Walnut (Glued Up)



# Directions

---

1

## Prep lumber

Plane all the rough lumber to desired thickness.



2

## Rip 4/4 walnut pieces

Rip all the parts from the 4/4 Walnut. We first identified what boards would be the straightest for our Front Rails, then Back Rails. The rest of the parts are short enough that we were not terribly concerned.





**3****Machine biscuits**

We then identified what boards we would use for our bottom shelf and machined biscuits slots to keep things aligned during our glue up.

**4****Glue boards and scrape off excess**

After the glue set up on our bottom board glue up, we took a hook scraper and scraped off any glue squeeze out. It is good to do this about 20 mins after the glue up.





**5**

### Rip and plane legs

While she was machining biscuits slots, I ripped and planed our legs down to size.

**6**

### Cut stiles

We were able to use a scrap from ripping the legs down for the stiles. This required us to get the planer back out, but we were happy to be able to get all the stiles out of one piece instead of using smaller scraps or having to cut into another board.





**7****Cross cut boards to length**

We then Cross Cut the boards to length using the Kreg's Precision Miter gauge.

**8****Ensure legs are the same length**

To make sure that the legs were all the same length we used the Table saw fence with a scrap of wood clamped to the fence. It is important that the scrap ends before the blade, this will prevent the wood from binding between the blade and the fence.





**9****Break down plywood**

We then used a track saw to break the plywood down.

**10****Locate places for mortises on legs**

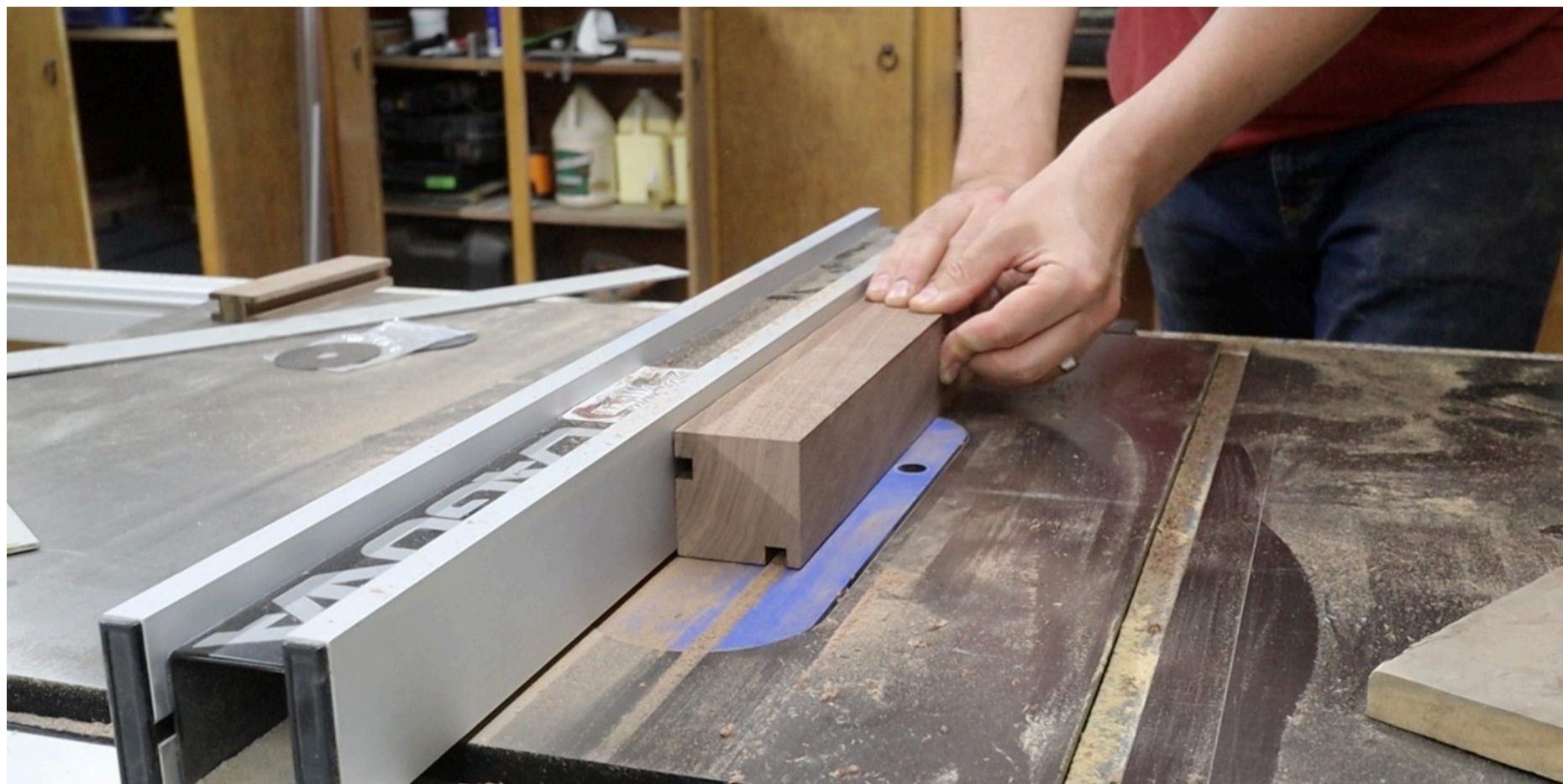
We laid out where all the mortises would be located on the legs.





**11****Cut grooves in the legs for side panels**

Using a Dado blade stacked to 3/8" we cut a groove in the legs, as well as the side and back top and mid rails for the side panels and back panels

**12****Mortise the legs**

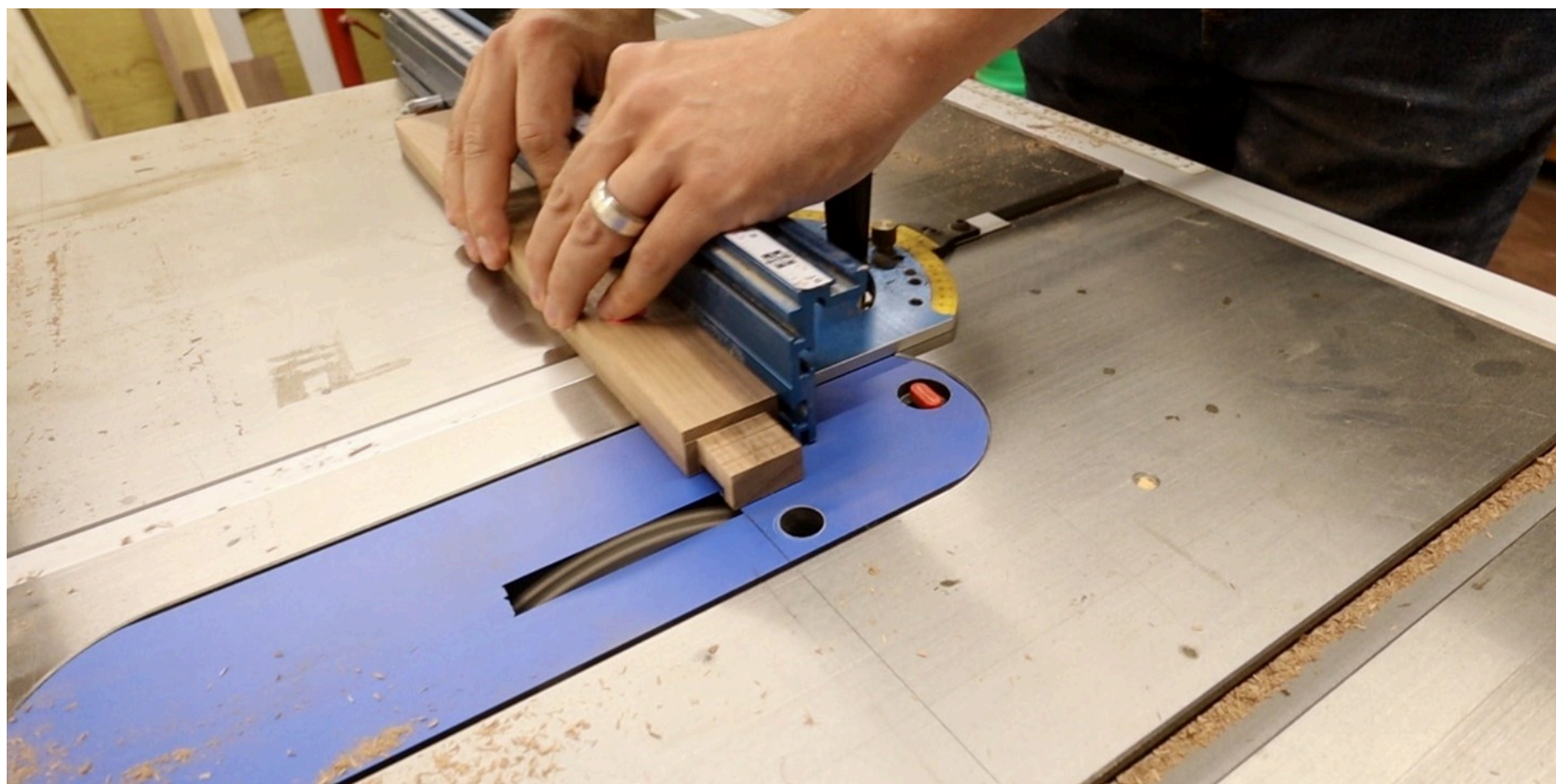
Using a mortiser we mortised the required areas in the legs.





**13****Cut tenons on rails**

Using the same dado stack and miter gauge as before we cut the tenons on each of the rails.

**14****Adjust the fit of the mortises**

We dialed in the fit using a chisel and file





15

### Dry fit your vanity

One of the benefits to mortise and tenon is that you can dry fit everything.





**16****Measure and cut shelves**

Now that we know everything fits, we need to measure the as built dimensions for the bottom and middle shelf, then tear it all down and cut the bottom and middle shelf to size.





**17**

### Glue everything together

Time to glue everything up. We glued the sides first making sure everything is square.

**18**

### Install bottom shelf

Gluing the rest of the vanity is a little tricky. I probably should find a glue with a little longer open time. I always get stressed when it come to a large glue up when I am dealing with a time limit. One thing to keep in mind is that we need to install the bottom shelf at the time.





**19****Check that everything is square**

Again, once everything is in clamped, we need to check for square.

**20****Drill pocket holes in stiles**

We then used our Kreg 720 Pro to drill pocket holes in our stiles...





**21****Mount stiles between the rails**

...and mounted them between the rails. This provides the openings for our six drawers on the front of the vanity.

**22****Mount the supports for the middle shelf**

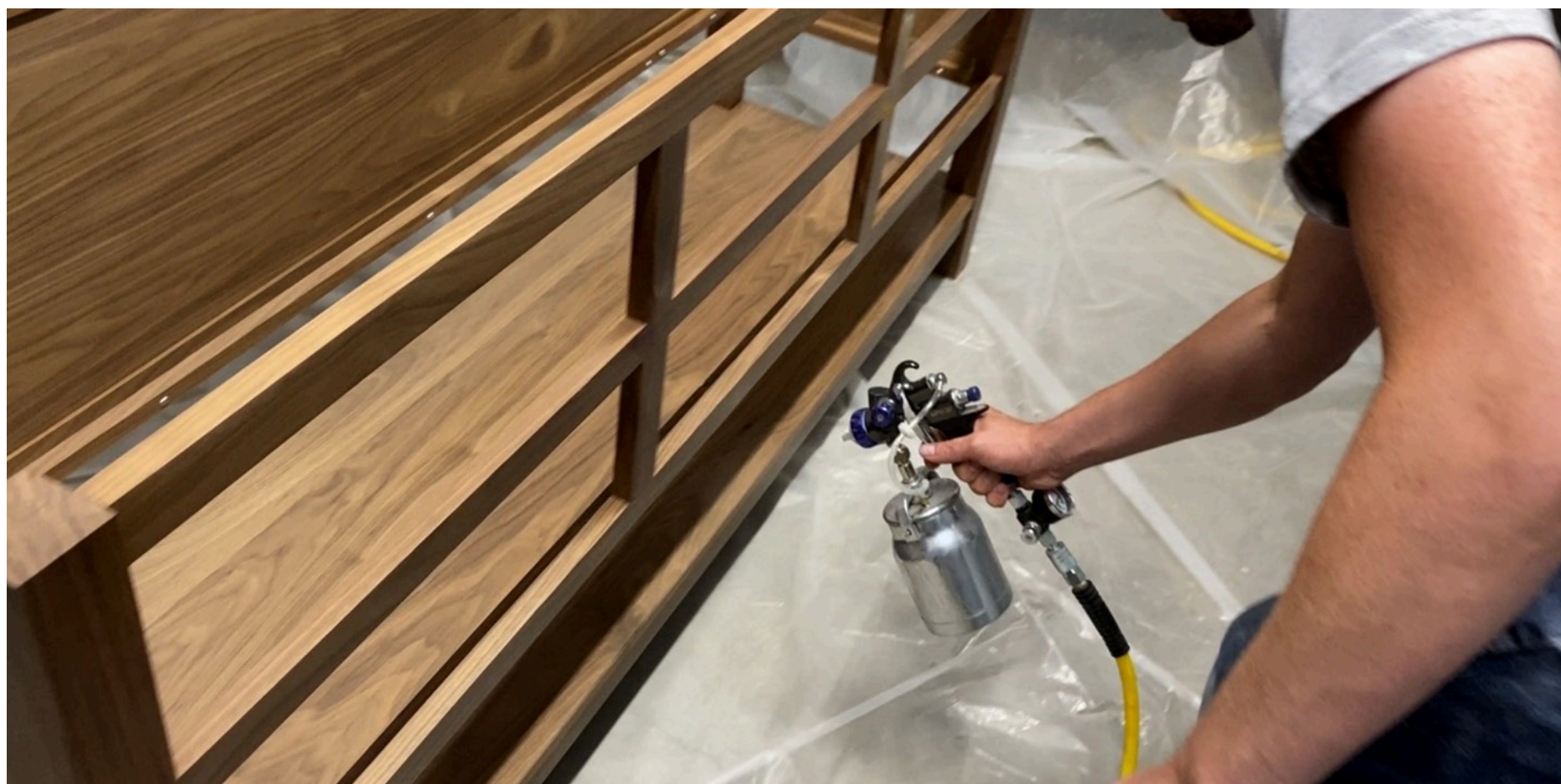
Our final step before finish was to mount the supports for the middle shelf.





**23****Spray the vanity with polyacrylic**

We sprayed a water based polyacrylic, sanding with 320 grit and wiping it down with tack cloth between coats.

**24****Add countertop and build drawers**

It looks amazing in our master bathroom. We had a template made for a quartz countertop, and now we wait for that to be finished and installed! Once that is done we will build inset drawer faces and drawer boxes.

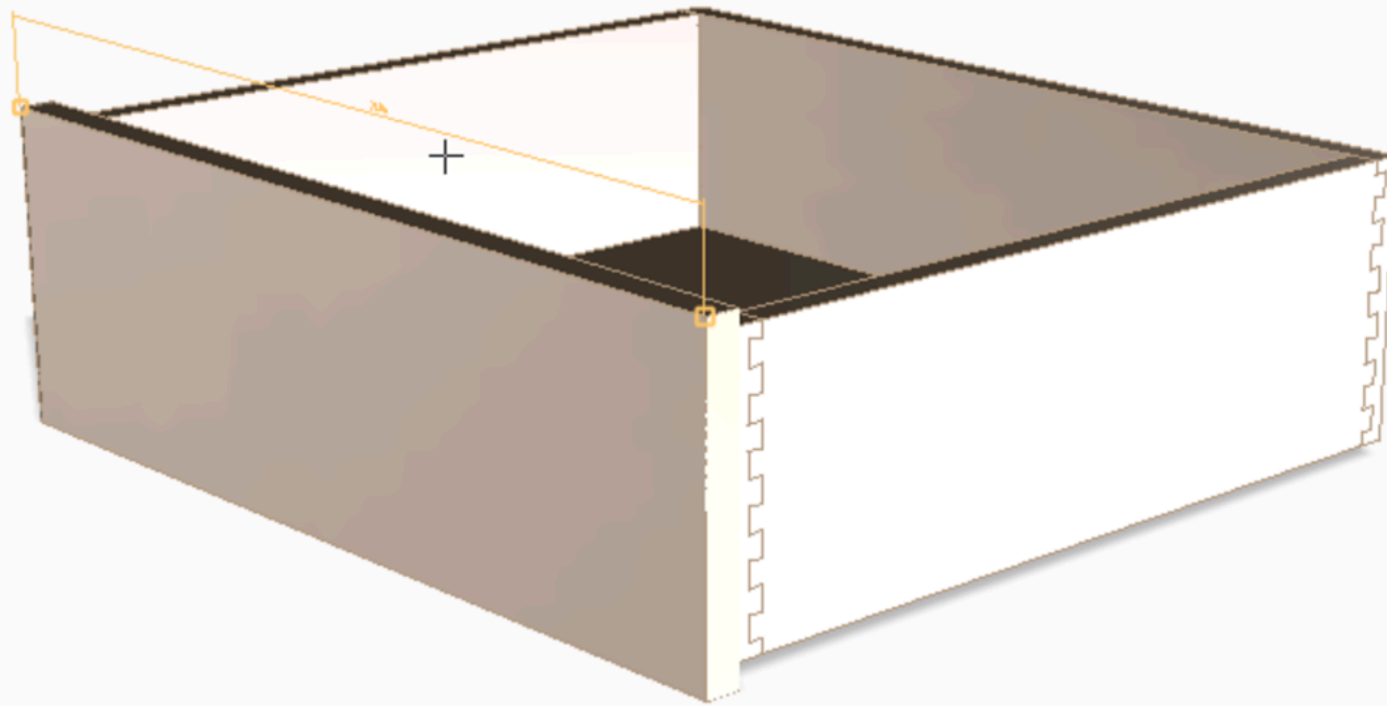




25

### See note on building drawers

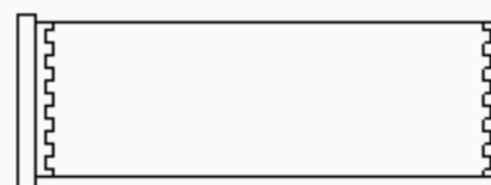
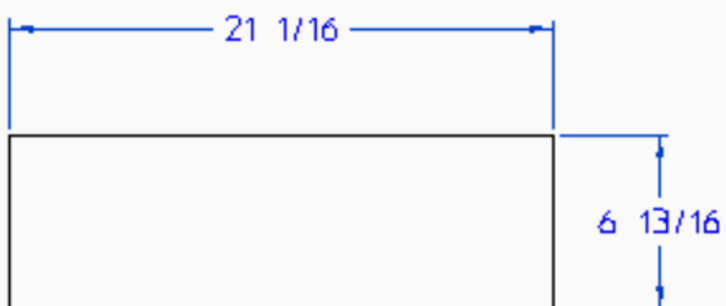
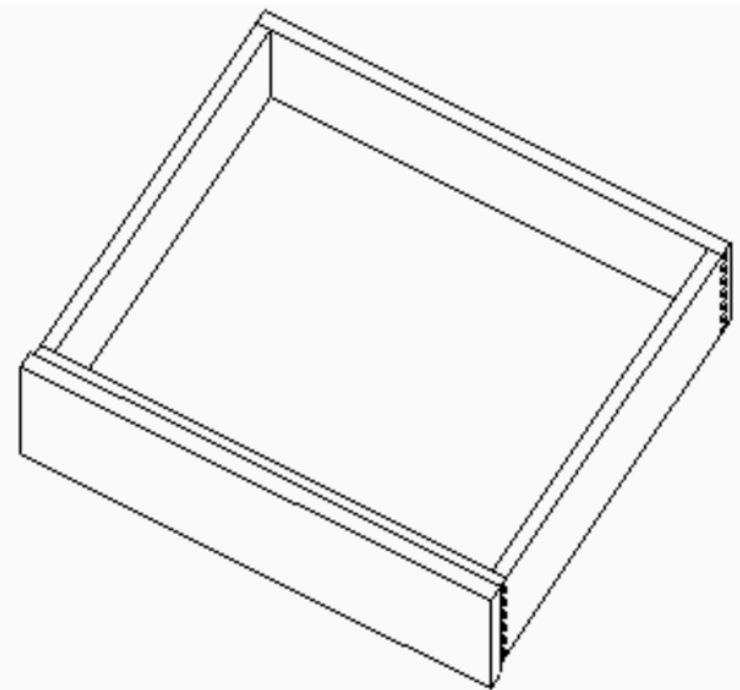
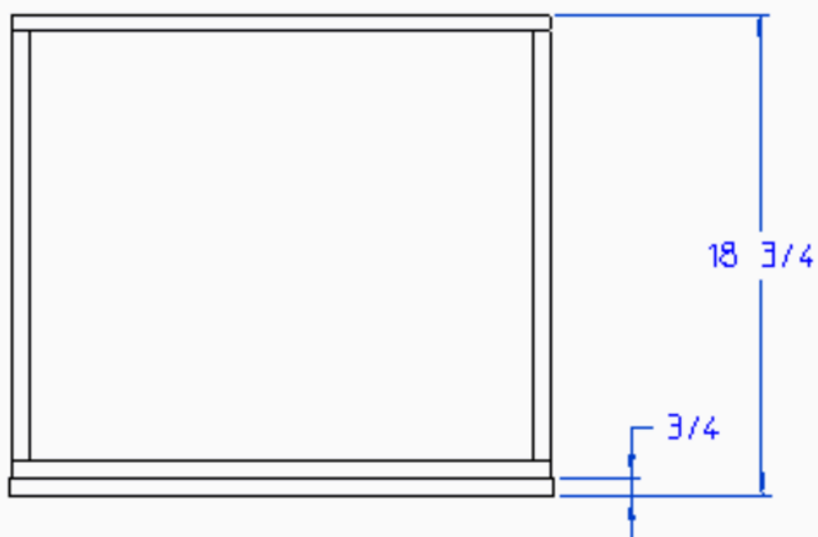
Note: Most of these dimensions will fluctuate since the placement of the sinks and plumbing will have an affect on them.



26

### Cut drawer fronts

We will start by cutting out drawer fronts, we are cutting ours  $\frac{3}{16}$ " smaller that the drawer opening.

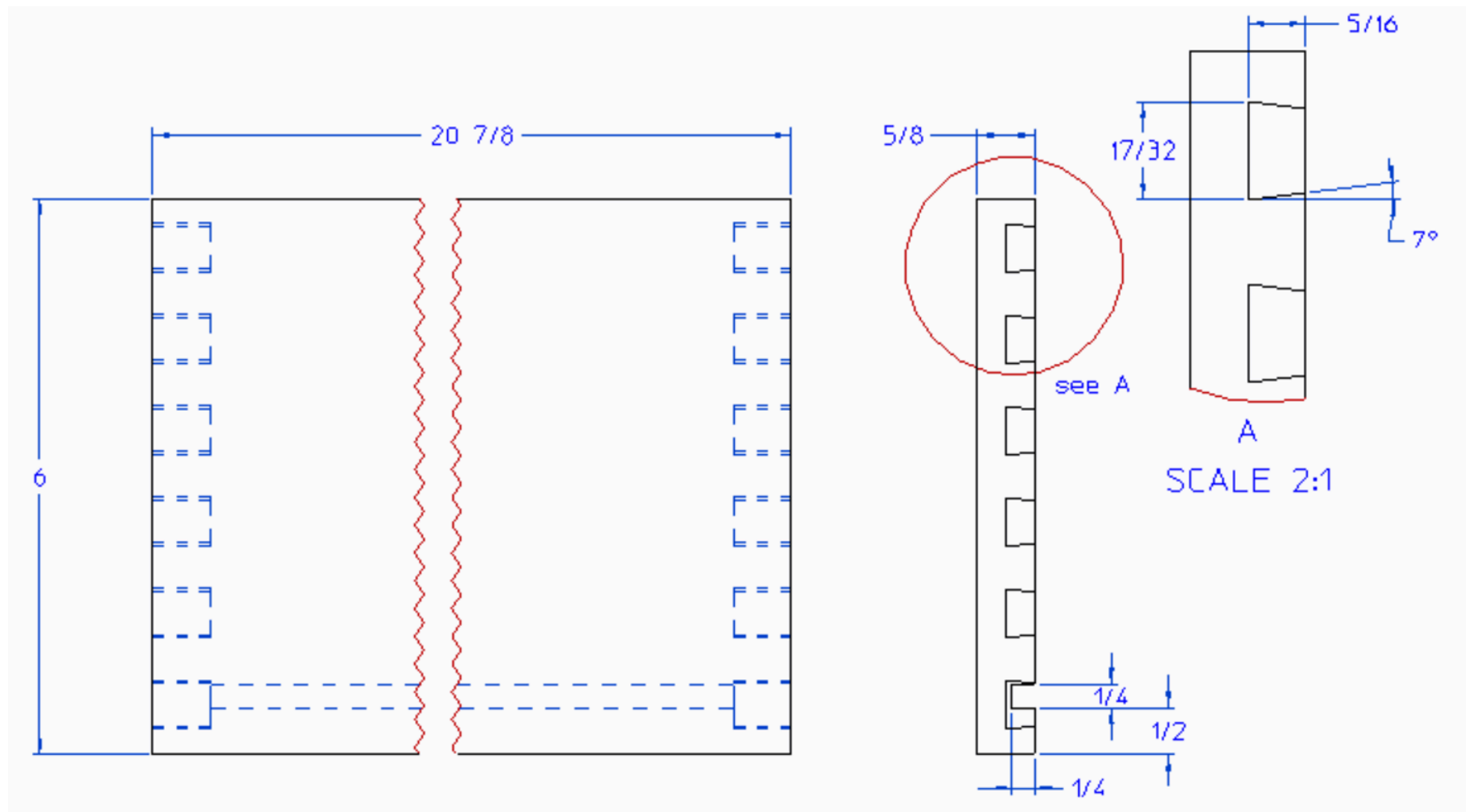




27

### Cut drawer sides, back and bottom

We then cut the sides, back, and bottom to length. Using a router template and a  $\frac{17}{32}$ "  $7^\circ$  dovetail router bit we route our pins and tails. Lastly we cut our groove for our shelf bottom.





28

### Cut drawer bottom and assemble

Then we cut the drawer bottom and assembled

