

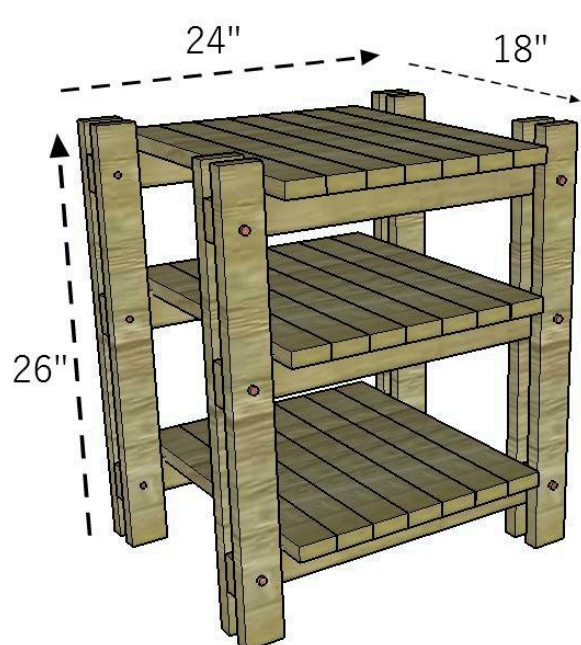
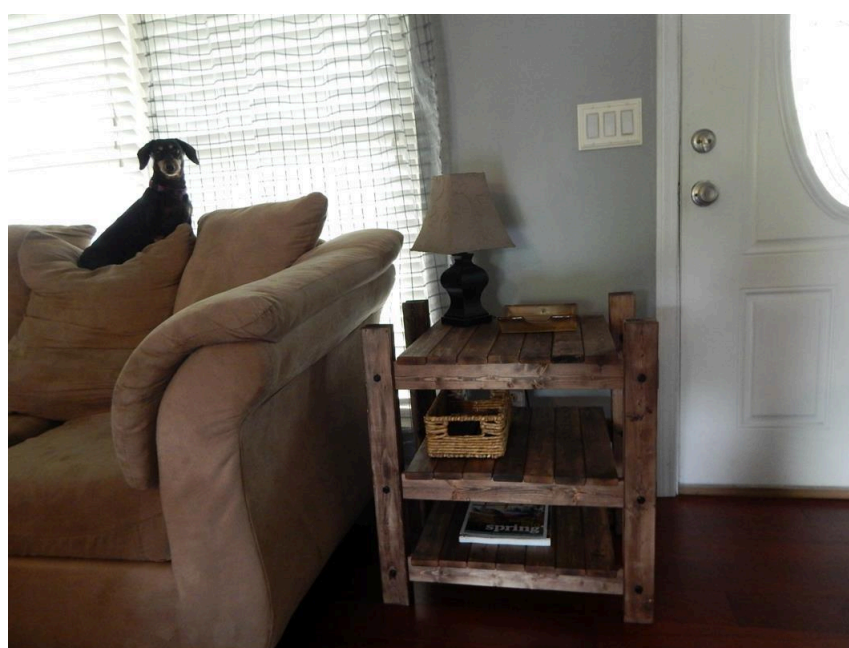
Rustic End Table

By **The Crafted Maker**

Difficulty

Easy

Rustic end table inspired by a very popular furniture store. This project is super simple to build and is held together with pocket hole screws and nuts and bolts. Easy weekend project.



SAWDUST to Sequins

Tools

Kreg Tools

Kreg®
Pocket-
Hole Jig
720

[Kreg® Pocket-Hole Jig 720](#)

Other Tools

Miter Saw

Tape Measure

Drill (cordless)

Sander

Materials

Wood Products

- 9 Board , 1x3 , 96"
- 2 Board , 1x2 , 96"

Hardware & Supplies

- 12 1 1/4" Pocket Hole Screws
- 12 3/8-in-16 Hex Nuts
- 12 3/8-in-16 X 3-in Bolts
- 12 3/8-in X 7/8-in Flat Washers
- 42 1 1/4" Wood Screws

Cut List & Parts

- 21 1x3 , 18"
- 8 1x3 , 26"
- 6 1x3 , 24"
- 6 1x2 , 17.5"

Directions

1

Drill Holes with Spade Bit

Cut boards according to cut list and drill holes in the 8- 1X3's @ 26" and the 6-1X3's @ 24". Use the 3/8" spade bit for this step.

○ = holes drilled
with 3/8" spade
bit

Holes 1.25" from
side and end.



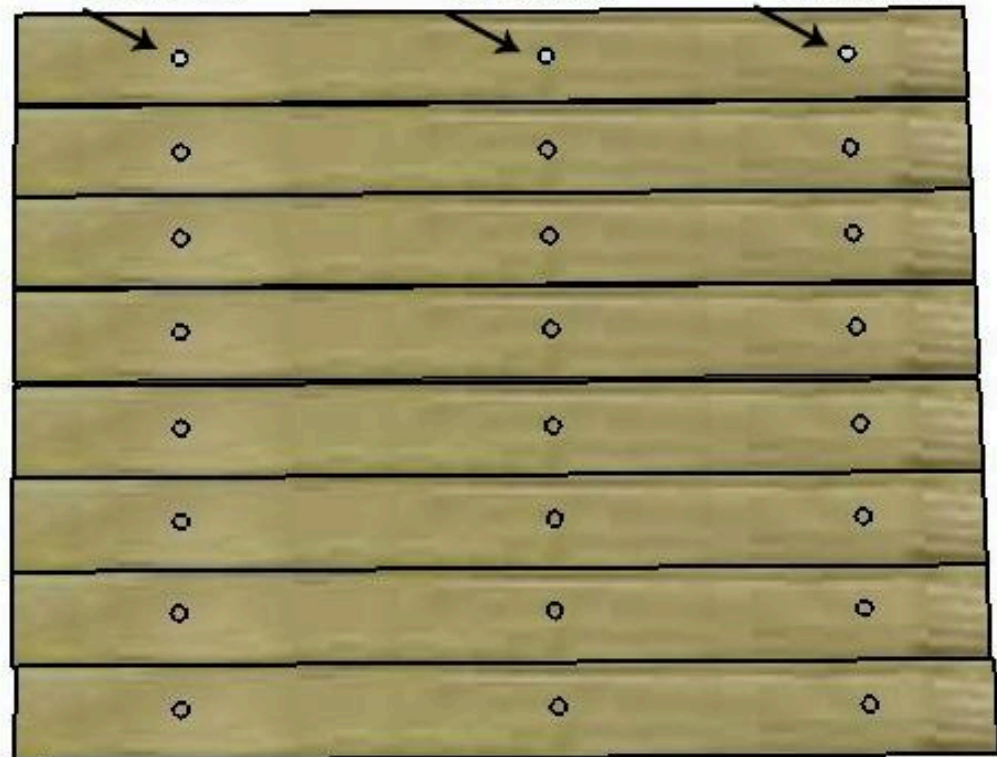
1X3 @ 24"

Holes are 1.25" from side and

4.5" from top
of board

14.5" from top
of board

22.75" from top
of board



1X3 @ 26"

SAWDUST to Sequins

2

Drill Pocket Holes

Drill pocket holes in the 6- 1X3 @ 24". This is what the shelf boards will attach to. You will only need two pocket holes per board to support the shelf board sections.

↑ = Pocket Holes



SAWDUST to Sequins

3

Sand and Stain

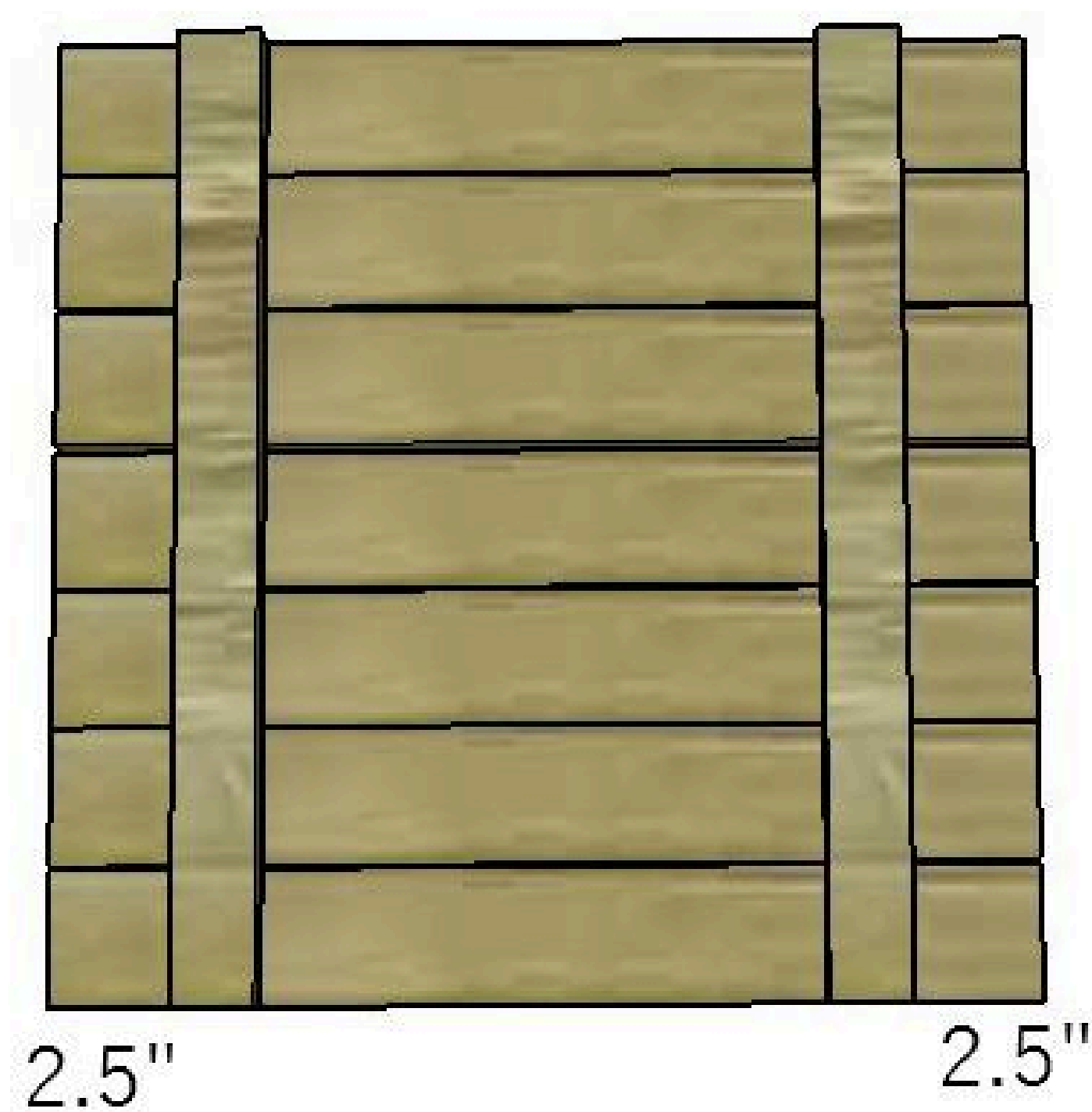
Completely sand your boards and paint or stain. This is very difficult to do once the table is assembled.

4**Make Shelf Units**

Lay 2- 1X2 @ 17.5" boards across

7- 1X3 @ 18" boards and screw together

with 1 1/4" wood screws. Make three of these.



SAWDUST to *Sequins*

5

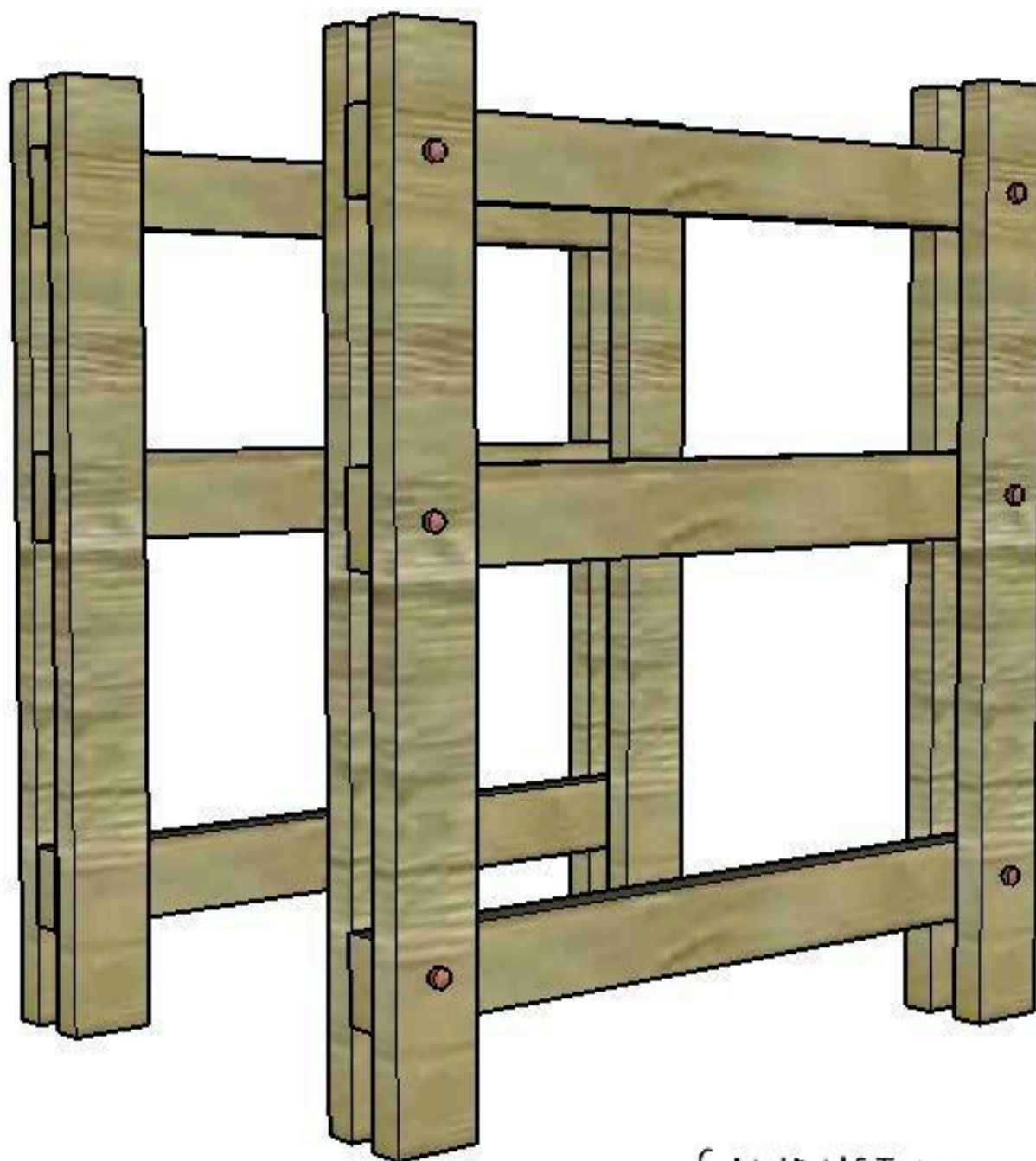
Build Leg Units

Place 3-1X3 @ 24" between 2- 1X3 @ 26"

Secure with a bolt, washer, and hex nut. The holes drilled with the spade bit will be the placement of the boards.

tighten nuts to ensure stability of the table.

Make two leg units.



SAWDUST to Sequins

6**Attach Shelves to Leg Units**

Take the shelf sections you have already assembled and attach to the leg units with pocket hole screws. The shelf units should hang over 1" on each side.



SAWDUST to *Sequins*