

Modular Miter Station – Phase 2 – Air Cart

By **The Awesome Orange**

Difficulty
Moderate

A mobile workbench that stores your air compressor, all your pneumatic tools, hose reel and more! Part 2 of the Modular Miter Station series.





Tools

Kreg Tools

Wood
Project [Wood Project Clamp - 6"](#)
Clamp -
6

Kreg®
Pocket-
Hole Jig [Kreg® Pocket-Hole Jig 720](#)
720

Cabinet
Hardware [Cabinet Hardware Jig](#)
Jig

Other Tools

Circular Saw (corded)

Miter Saw

Square

Table Saw

Tape Measure

Drill (cordless)

Nail Gun

Air Compressor

Materials

Wood Products

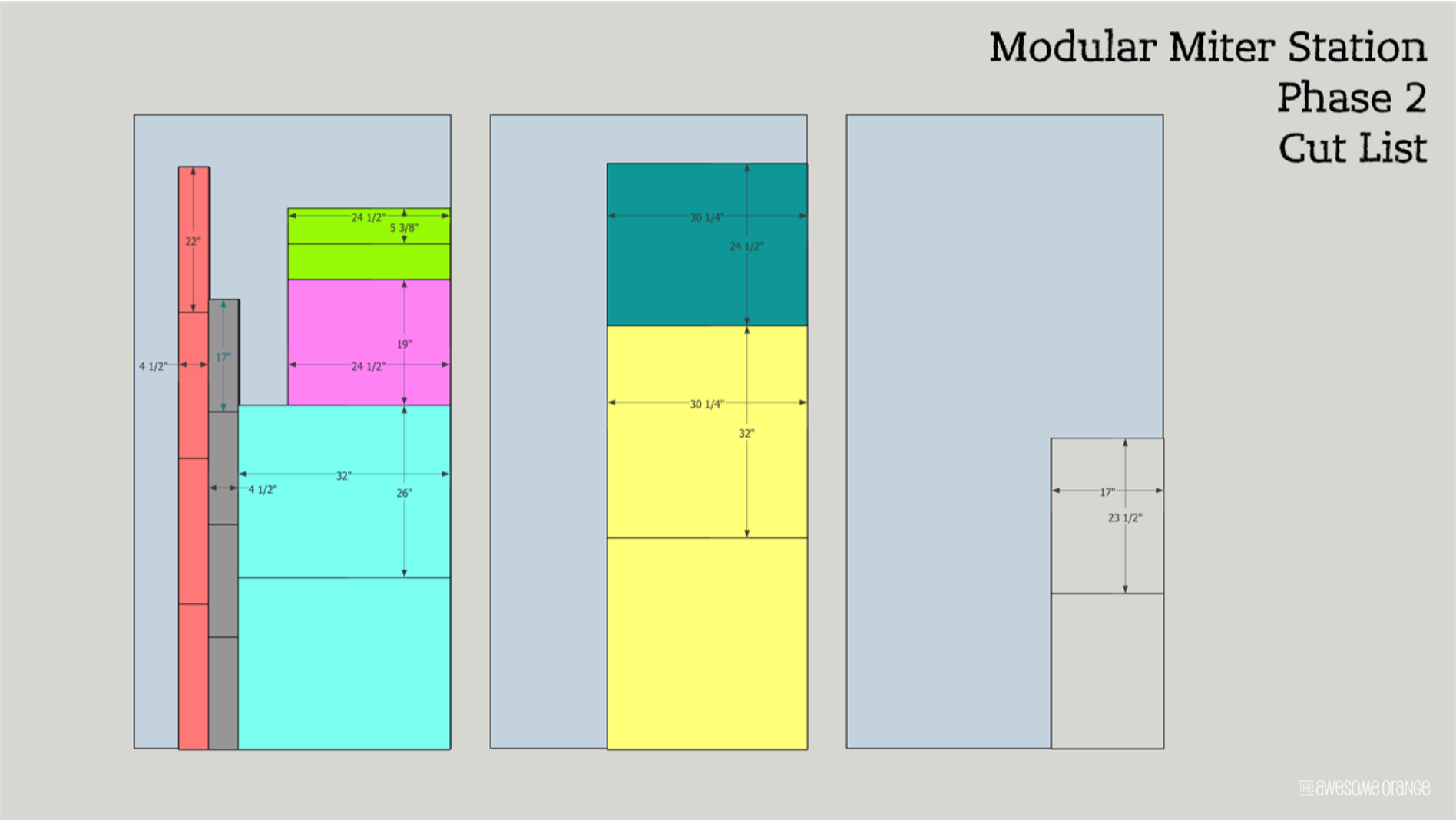
- 2 Plywood , 3/4" Thick , Full Sheet
- 1 Plywood , 1/4" Thick , Half Sheet

Hardware & Supplies

- 3 Pulls/Knobs
- 16 1" Lag Wood Screws
- 16 Washers
- 4 4" Casters
- 1 Set Hinges
- 1 Box 1 1/4" Coarse Pocket Holes Screws
- 1 18 Ga Brad Nails

Cut List & Parts

- 2 Top And Bottom , 3/4" 32" X 26"
- 2 Sides/Uprights , 3/4" X 32" X 30 1/4"
- 1 Middle Divider/Upright , 3/4" X 30 1/4" X 24 1/2"
- 2 Shelves , 3/4" X 24 1/2" X 12 1/2"
- 4 Drawer Sides , 3/4" X 4 1/2" X 17"
- 4 Drawer Box Front & Back , 3/4" X 4 1/2" X 22"
- 2 Drawer Bottoms , 1/4" X 17" X 23 1/2"
- 2 Drawer Fronts , 3/4" X 24 1/4" X 5 3/8"
- 1 Cabinet Door , 3/4" X 24 1/4" X 19"



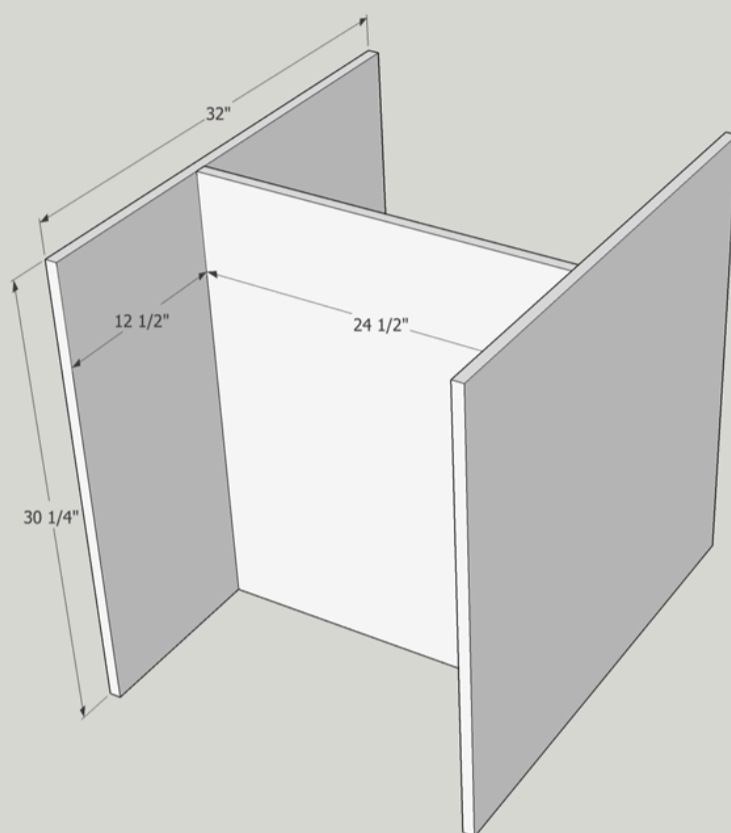
Directions

1

Assemble Uprights

Attach middle divider upright to two side uprights using 3/4" pocket holes with 1 1/4" coarse pocket holes screws. Use spacer block to ensure divider is evenly space 12 1/2" back on both pieces. Check for square thru-out building process.

Modular Miter Station Phase 2 Step 1



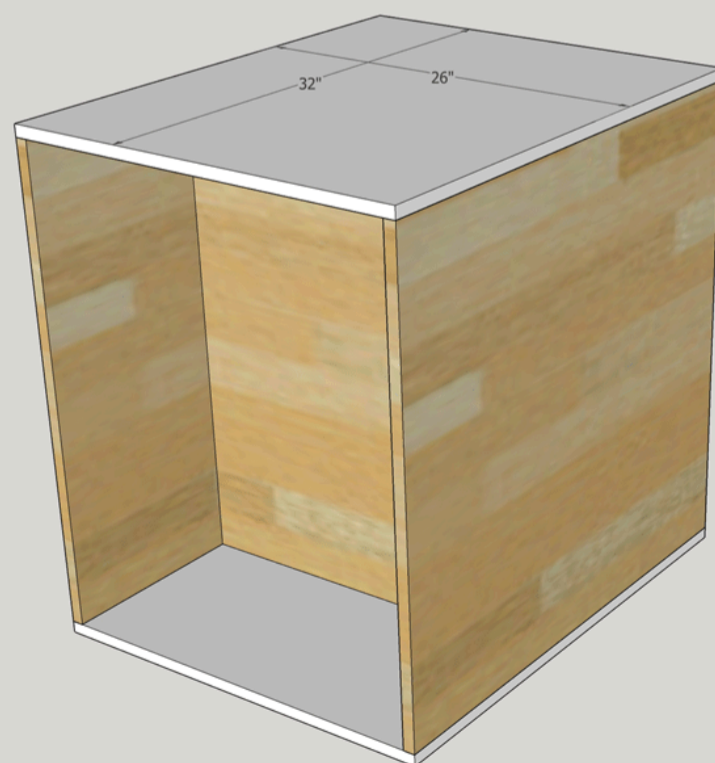
THE AWESOME ORANGE

2

Attach Top & Bottom

Attach top and bottom to upright section using 3/4" pocket holes with 1 1/4" coarse pocket hole screws.

Modular Miter Station Phase 2 Step 2



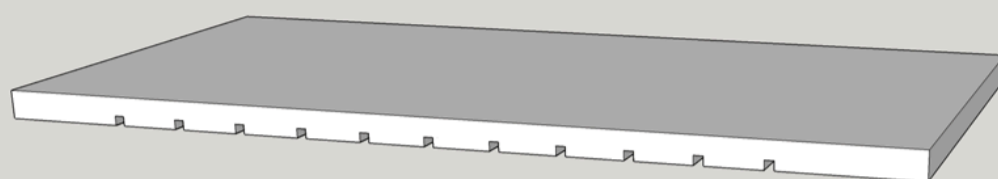
THE AWESOME ORANGE

3

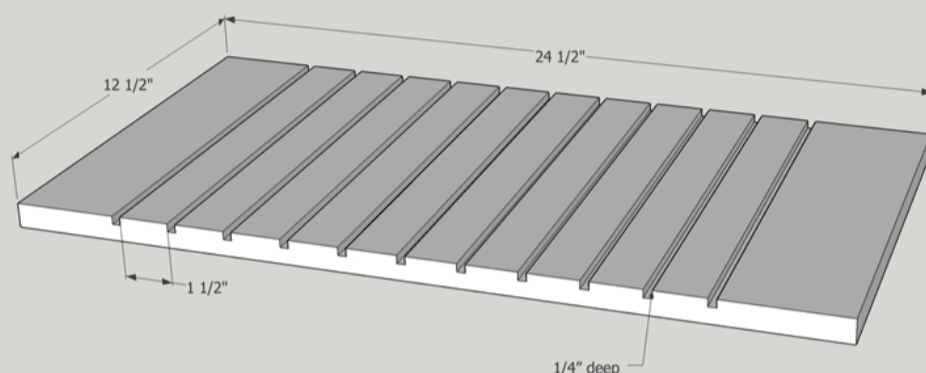
Dado Shelves

Using the table saw or router rip $\frac{1}{4}$ " deep dados approximately $1\frac{1}{2}$ " apart. Be sure that both top and both match.

Modular Miter Station Phase 2 Step 3



Be sure that dado's on both the top and bottom shelf line up.



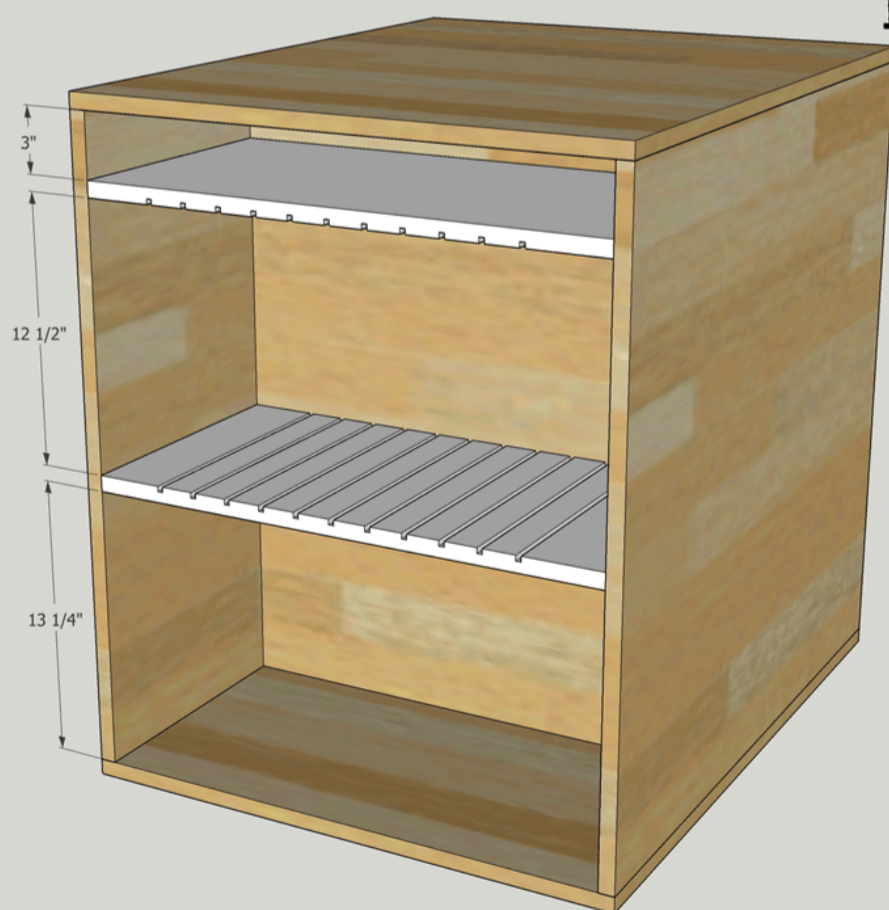
THE awesome ORANGE

4

Install Shelves

Using $\frac{3}{4}$ " pocket holes with $1\frac{1}{4}$ " coarse pocket holes screws install first shelf (dado's facing down) 3" from top. Then install second shelf the same way (dado's facing up) $12\frac{1}{2}$ " down from there. You can adjust these measurements to fit your pneumatic tools, but these dimensions should fit most. Bottom section is for a hose reel.

Modular Miter Station Phase 2 Step 4



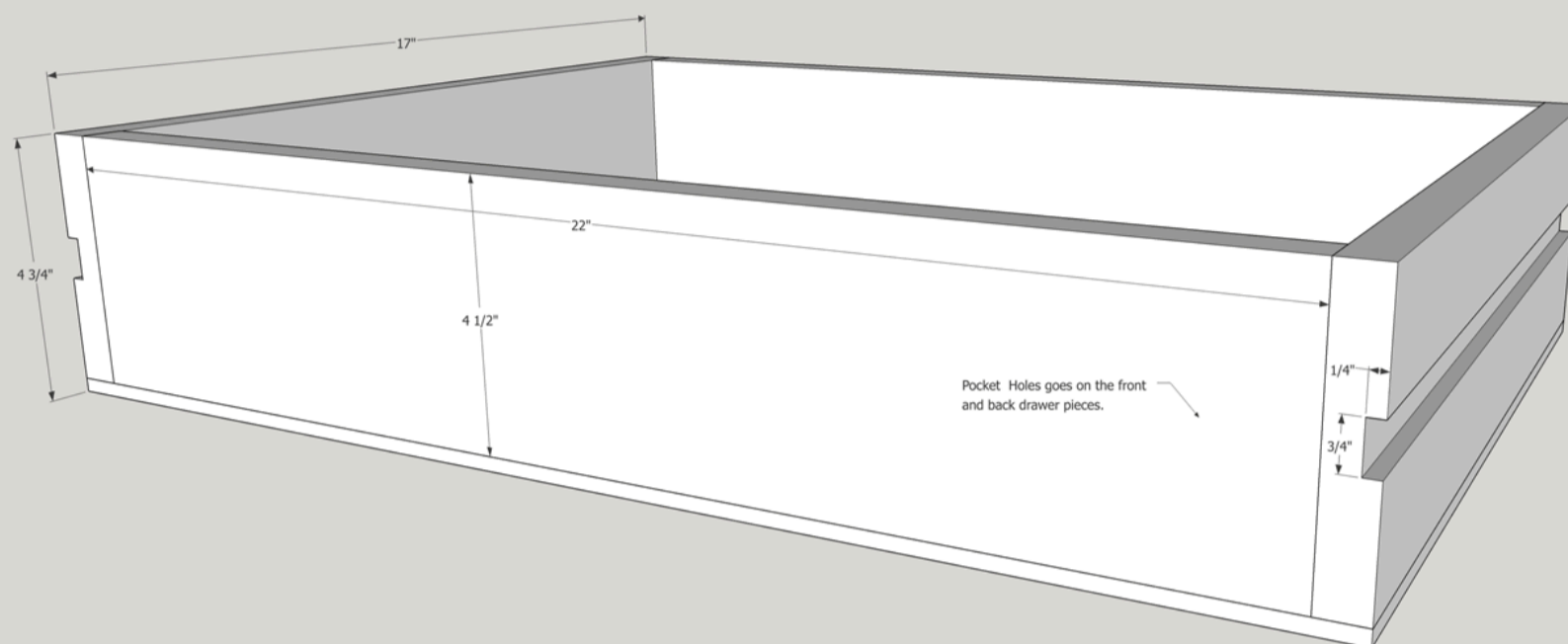
THE awesome ORANGE

5

Assemble Drawer Boxes

Drill 3/4" pocket holes in the front and back panels of the drawer boxes, 4 of them. On the other 4 side panels rip a 3/4" dado 1/4" deep down 1 7/8" from the top. Assemble drawers sides using 1 1/4" coarse pocket holes screws and wood glue. Then attach bottom using wood glue and 1 1/4" 18 ga brad nails.

Modular Miter Station Phase 2 Step 5



THE awesome ORANGE

6

Install Drawers

Install wooden drawer slides starting from the top. Put 2 1/2" spacer blocks on the top and then install wooden drawer slide underneath using wood glue and 1 1/4" 18 ga brad nails. Then after first drawer slides use 4 1/2" spacer blocks to install 2nd drawer slides. Install drawers. NOTE: Slides should be slightly less than 3/4" so that drawer glide freely. Waxing slides will also help in drawers sliding freely.

Modular Miter Station Phase 2 Step 6

Install 2 1/2" down from top.

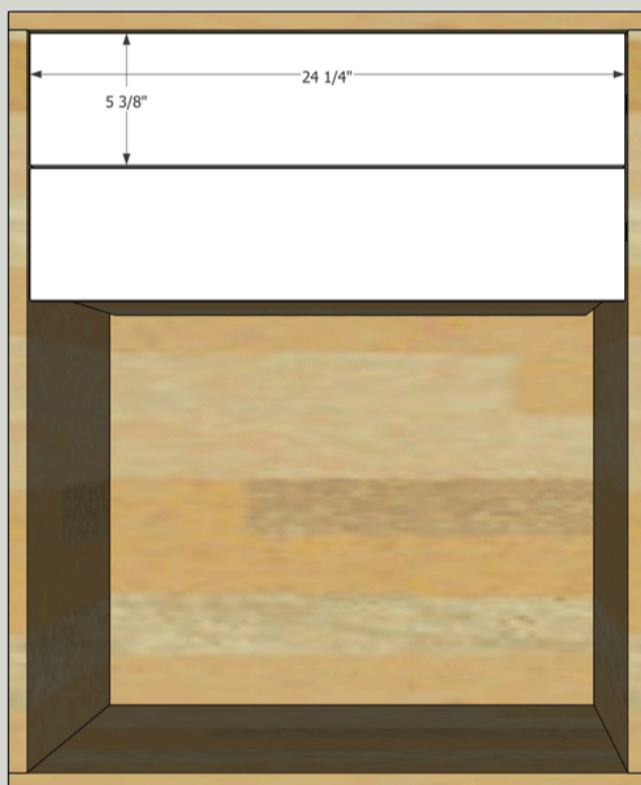
4 1/2"



THE awesome ORANGE

7**Install Drawer Fronts**

Drill hole(s) for desired drawer hardware. Then line up bottom drawer front with drawer, using playing cards or business cards as spacers. Once at desired location, screw a screw thru hardware hole in drawer front into drawer box. Once that is secure pull out drawer and attached four screw from inside drawer into drawer front. Then remove screw from hardware hole and install hardware. If you need more detailed information on how to do this, I put a link in the Extras section to a detailed description.



Modular Miter Station

Phase 2

Step 7

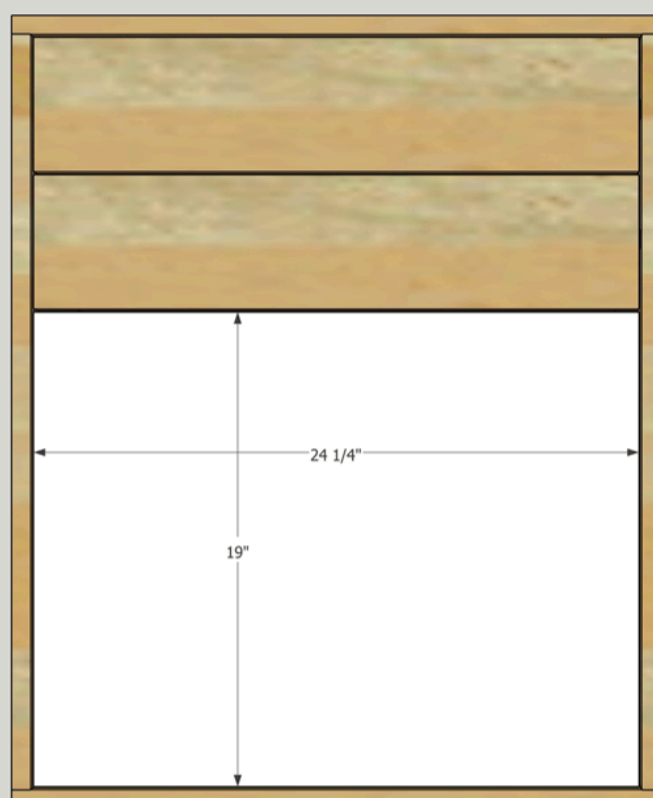
THE AWESOME ORANGE

8

Install Cabinet Door

Follow instructions that came with your inset hinges and install door.

Modular Miter Station Phase 2 Step 8



the awesome orange

9

Add Accessories

Add 1/4" slot dividers per your tools, install 4" casters using 1" wood lag screws and washers, attach hose reel, drill holes from air compressor storage cabinet to hose reel side, and any other accessories as desired.



the awesome orange

10

Visit theAwesomeOrange.com

Visit www.theAwesomeOrange.com to see more pics of this build and all Phases' of the Modular Miter Station Series.

THE awesome Orange

Build Loud, Build Wild
