

Bookcase with Toy Storage

By **Rogue Engineer**

Difficulty
Moderate

If you have kids then you know how important toy storage is. This wall unit now only gives you a ton of toy storage but it incorporates a book shelf for all those nighttime stories.

Check the extras tab for a PDF download of these plans and cut list.



Tools

Kreg Tools

Kreg®
Pocket-
Hole Jig
720

[Kreg® Pocket-Hole Jig 720](#)

Other Tools

Circular Saw (cordless)

Jigsaw

Square

Table Saw

Tape Measure

Drill (cordless)

Nail Gun

Sander

Materials

Wood Products

- 2** Plywood , 3/4" Thick , Full Sheet
- 1** Baseboard Trim , 3-1/4" , 48"
- 1** Decorative Moulding , 3/4" Thick , 48"

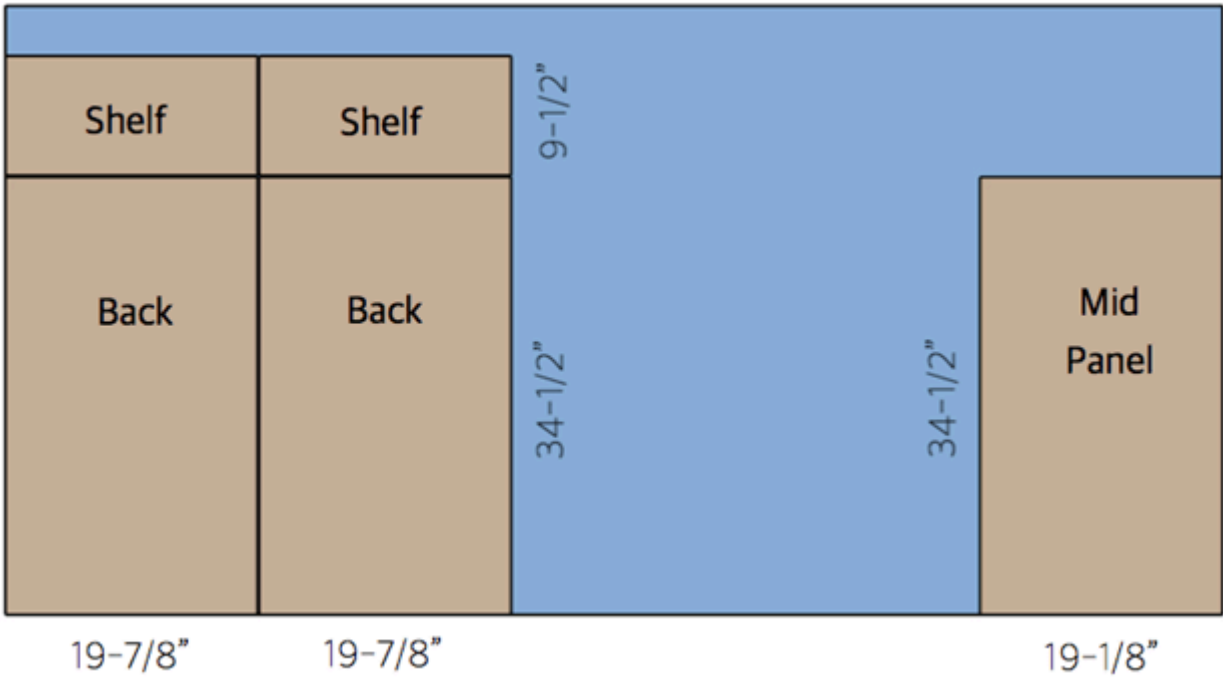
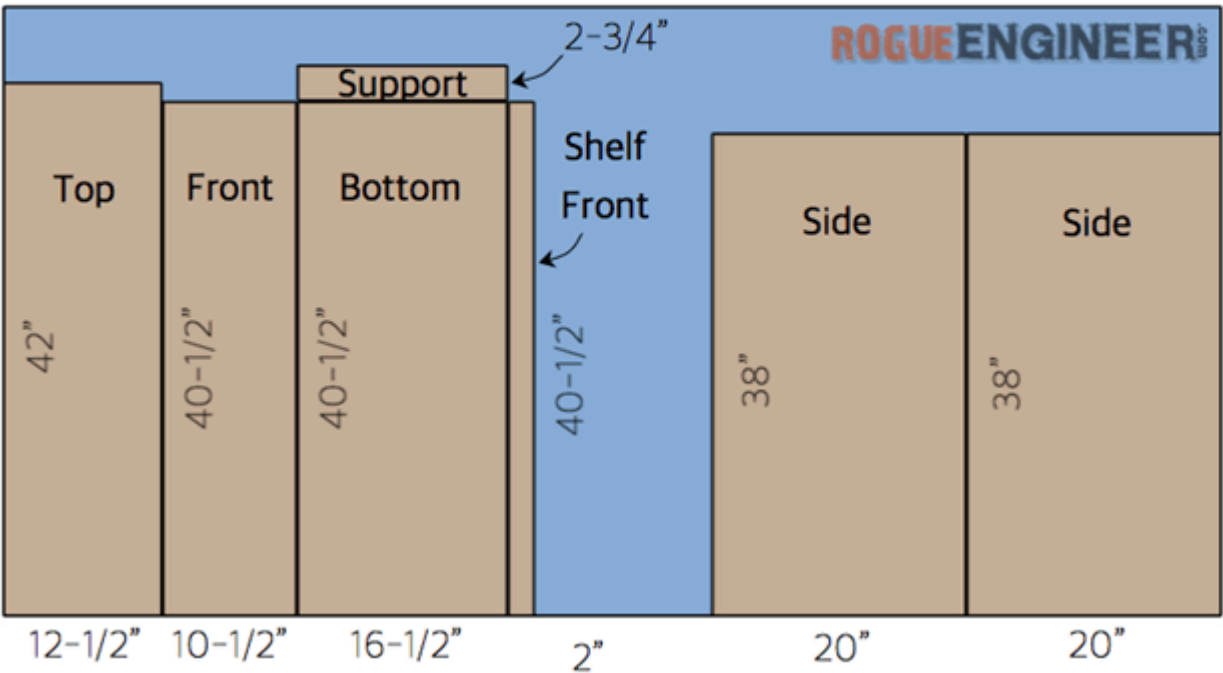
Hardware & Supplies

- 100** 1-1/4" Pocket Screws
- 100** 1-1/4" Brad Nails

Cut List & Parts

- 2 Sides , 3/4" X 20" X 38"
- 1 Mid Panel , 3/4" X 19-1/8" X 34-1/2"
- 1 Top , 3/4" X 12-1/2" X 42"
- 1 Front , 3/4" X 10-1/2" X 40-1/2"
- 1 Bottom , 3/4" X 16-1/2" X 40-1/2"
- 1 Support , 3/4" X 2-3/4" X 16-1/2"
- 2 Shelf , 3/4" X 9-1/2" X 19-7/8"
- 1 Shelf Front , 3/4" X 2" X 40-1/2"
- 2 Back , 3/4" X 19-7/8" X 34-1/2"

3/4" x 48" x 96" (Qty 2)



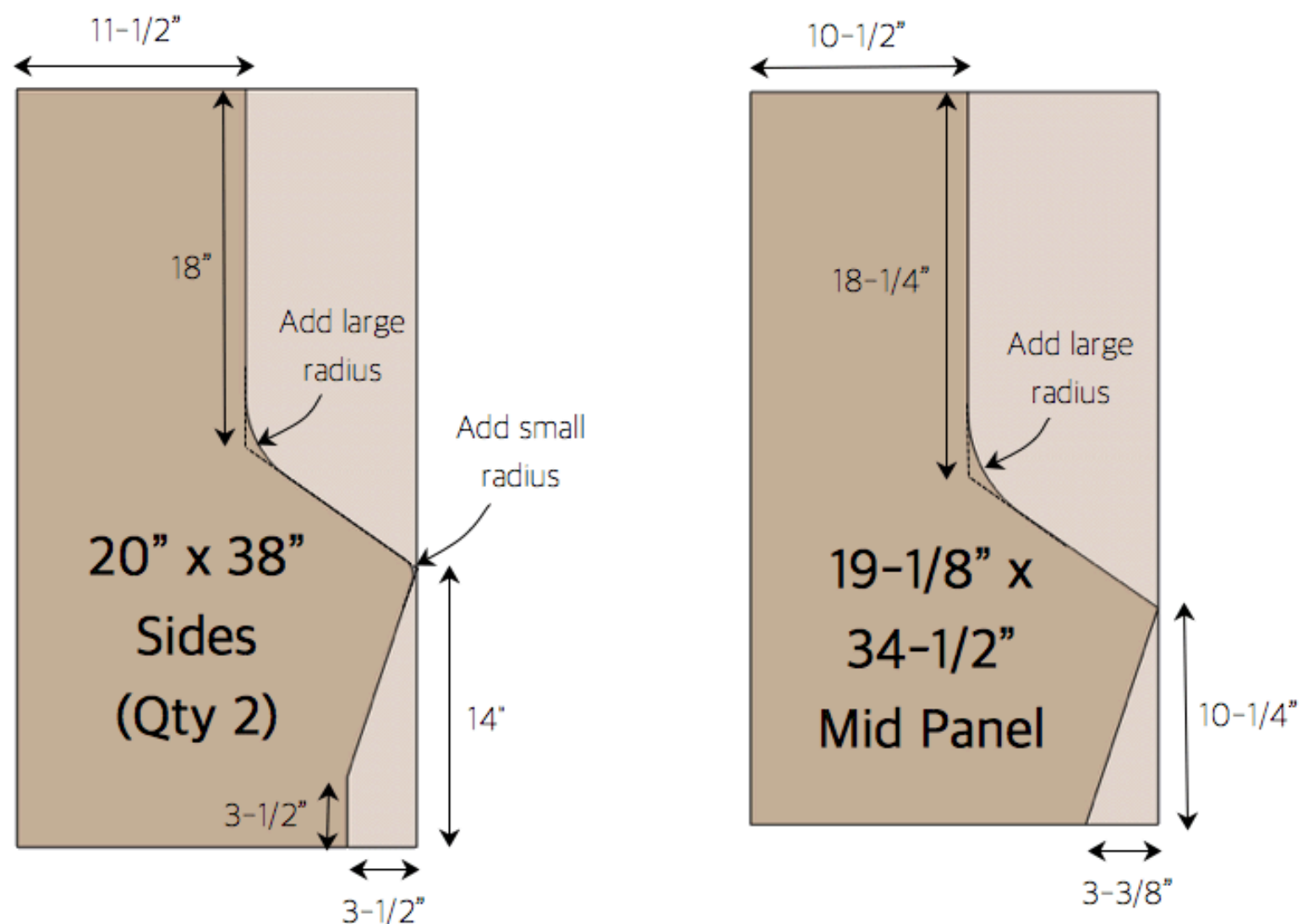
Directions

1

Cut Sides and Mid Panel

Use the diagrams shown to draw two sides and one middle panel. Then cut out using a circular saw and jig saw.

Step 1: Cut Sides and Mid Panel

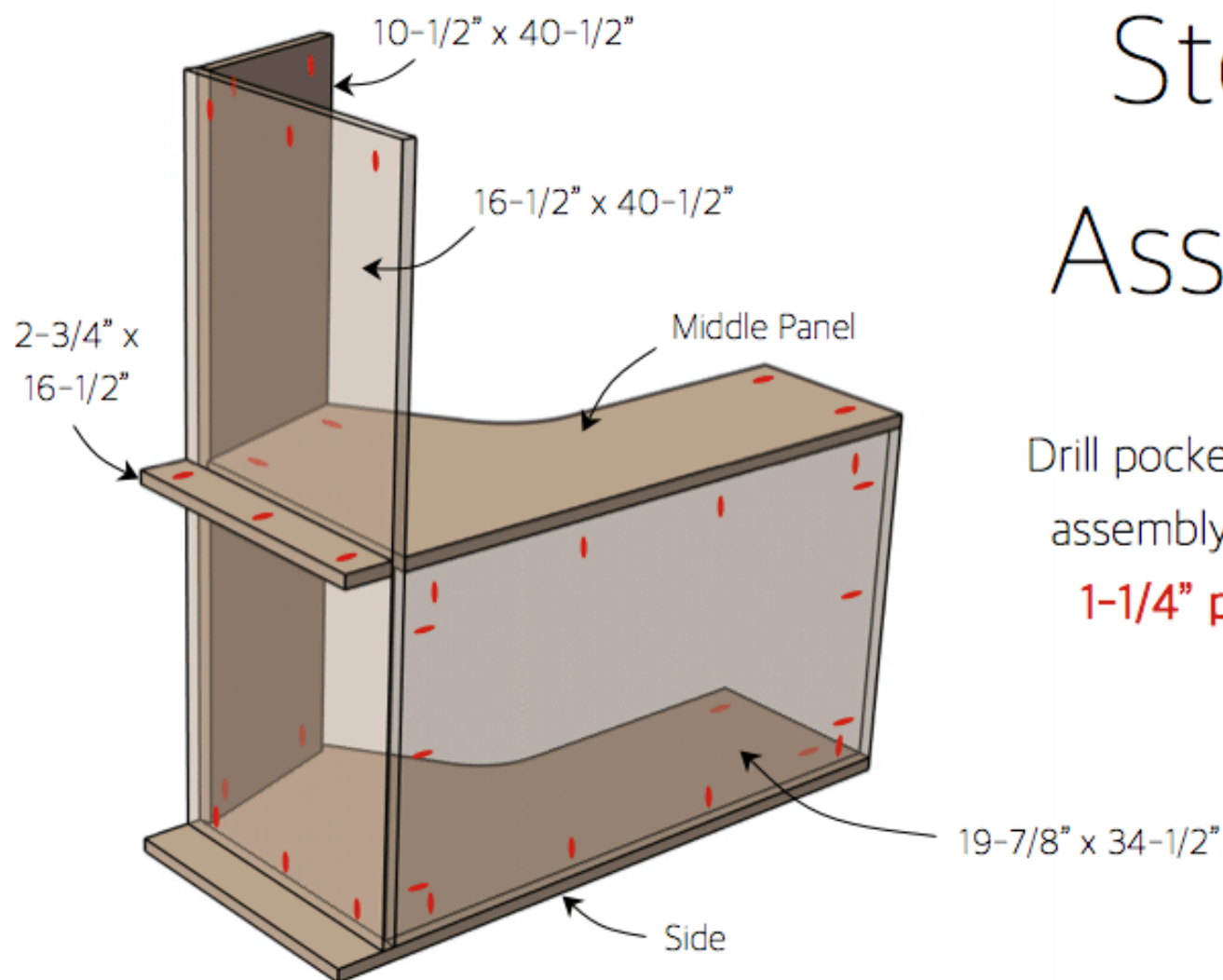


Cut sides and middle panel as shown using jig saw and/or circular saw.

2

Assembly

Drill pocket holes and begin assembly as shown using 1-1/4" pocket screws.



Step 2: Assembly

Drill pocket holes and begin
assembly as shown using
1-1/4" pocket screws.



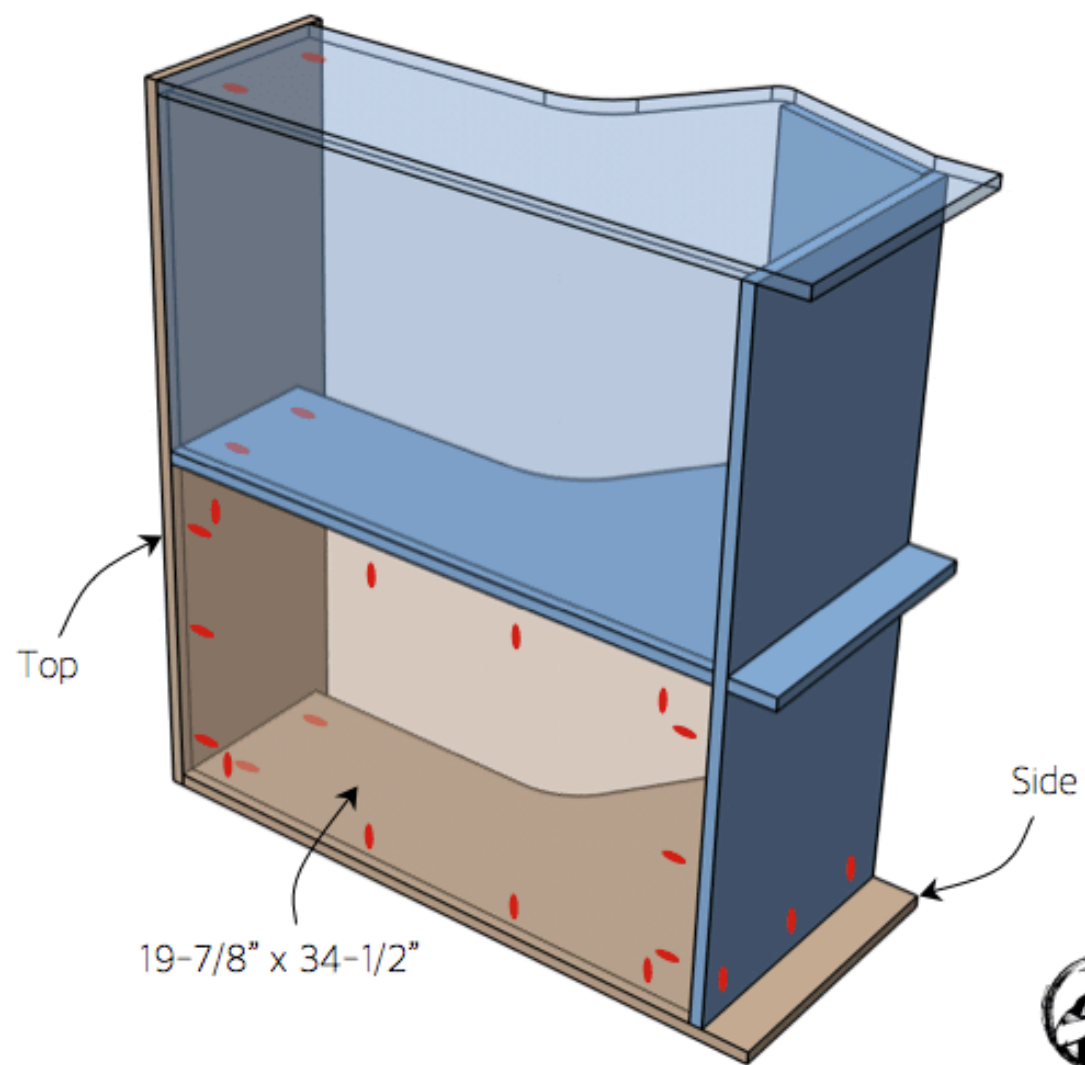
3

Assembly

Drill pocket holes and continue assembly as shown using 1-1/4" pocket screws.

Step 3: Assembly

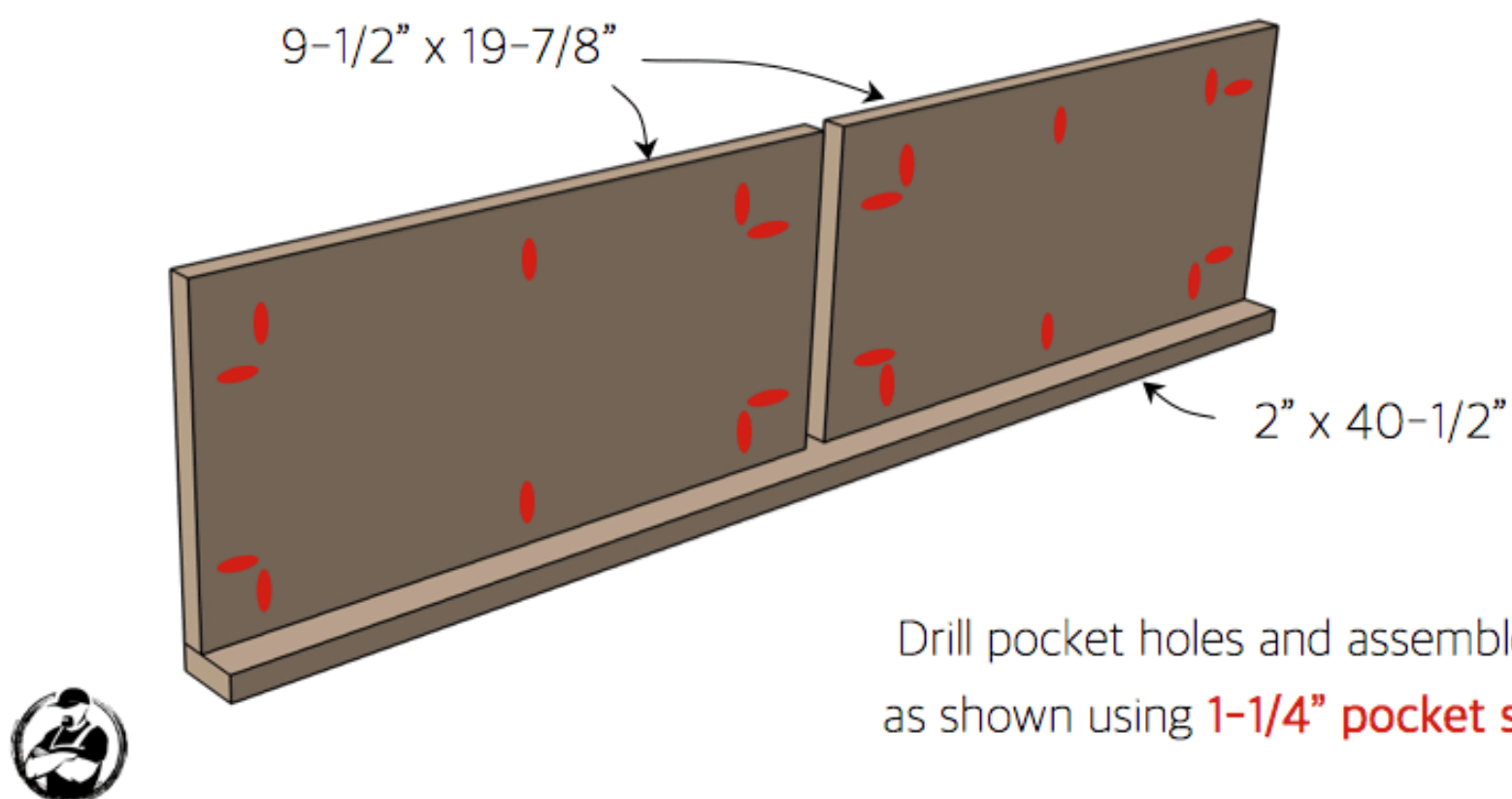
Drill pocket holes and
continue assembly
as shown using
1-1/4" pocket screws.



4**Assemble Shelf**

Drill pocket holes and assemble shelf as shown using 1-1/4" pocket screws.

Step 4: Assemble Shelf



5**Install Shelf and Trim**

Install shelf as shown using 1-1/4" pocket screws.

Cut base board trim and decorative moulding to length and install using 1-1/4" brad nails.

For more plans like this be sure to visit RogueEngineer.com

Step 5: Install Shelf & Trim

Install shelf as shown
using **1-1/4" pocket screws**.
Cut base board trim and
decorative moulding to length
and install using **1-1/4" brad nails**.

