

# Easy Mailbox Tutorial

By **Reality Daydream**

Difficulty

Easy

Build this simple, yet chic, mailbox using our building plans!



# Tools

## Kreg Tools

Kreg®  
Pocket-Hole Jig 720PRO  
[Kreg® Pocket-Hole Jig 720PRO](#)  
Adaptive Cutting System Saw + Guide Track Kit  
[Adaptive Cutting System Saw + Guide Track Kit](#)  
Precision Router Table System  
[Precision Router Table System](#)

## Other Tools



[Table Saw](#)



[Orbital Sander](#)



[Impact Driver](#)



[Router](#)



[Pin nailer](#)



[Miter Saw](#)

# Materials

## Wood Products

- 1 1X8X8 , 3/4" X 7 1/4" X 96"
- 1 1X6X8 , 3/4" X 5 1/2" X 96"
- 1 1X4X8 , 3/4" X 3 1/2" X 96"

## Hardware & Supplies

- 4 Rare Earth Magnets
- 1 Plumbers Chain
- 2 Eye Hooks
- 1 Mailbox Numbers
- 1 Titebond Outdoor Glue

# Cut List & Parts

- 1** Top , 4 15/16 X 14 1/2 X 1/2"
- 2** Mailbox Sides , 16 1/4 X 3 1/2 X 1/2"
- 1** Back , 16 1/4 X 12 1/2 X 1/2"
- 1** Front Brace , 13 1/2 X 1 3/16 X 1/2"
- 1** Bottom , 12 1/2 X 3 X 1/2"
- 1** Front , 13 11/16 X 13 1/2 X 1/2"
- 1** Mail Holder Bottom , 11 1/4 X 2 3/8 X 1/2"
- 2** Mail Holder Sides , 12 9/16 X 2 7/8 X 1/2"
- 1** Back Inner Box , 11 1/4" X 12 9/16"



# Directions

---

1

## Plane Boards

Plane Boards to 1/2"



2

## Rough Cut the Back, Front, and Mail Holder Back

Cut the 1X8 down to their rough dimensions (2 @ 17 1/4, 14 11/16, 13 9/16. Then glue and clamp them together



3

### Finish Cut the Back, Front, and Mail Holder Back

Using an track saw we cut the boards to there final dimensions.





4

## Cut Remaining Parts

Cut the remaining parts out of the 1x4 and 1x6.





**5****cut the 20 degree bevels on the Back, Top, and Front Brace**

we used a table saw to cut the bevels.

**6****Glue the Sides, Bottom, and the Back**

Using an outdoor glue, glue the sides bottom and Back together.

**7****Glue on the Front Brace**

Glue the Front Brace on, flush with the top edge of the sides.



**8****Drill pocket holes**

Drill pocket holes in the mailbox insert sides and bottom

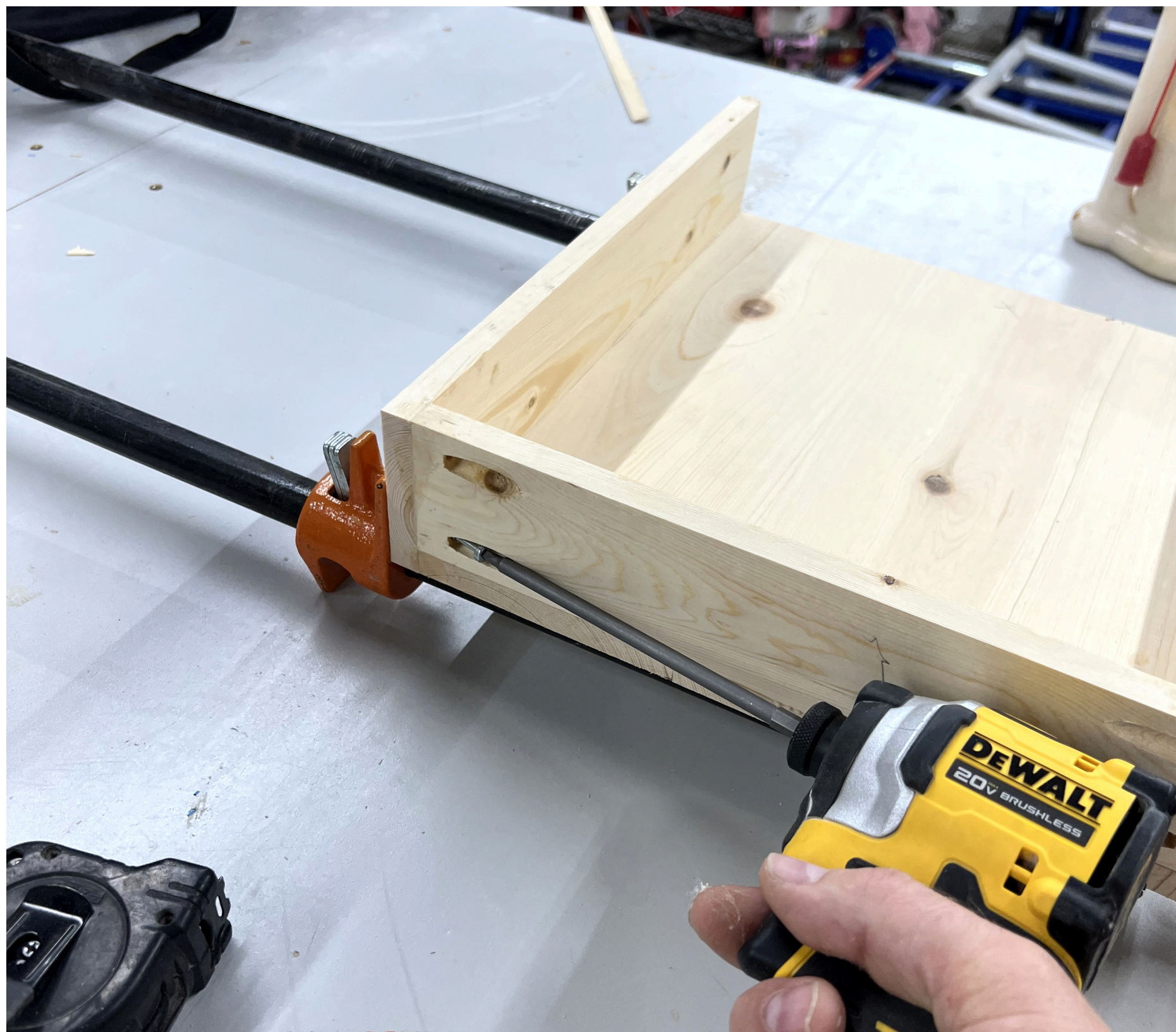




9

## Clamp, Glue, and Screw Mailbox Insert

Glue the Sides to the Back and Bottom on the Mailbox Insert, screw the bottom to the sides





10

## Cutting Trim

we wanted to add trim to the front, you could buy this at the hardware store or make your own.





11

## Glue and Nail Trim

Add trim to mailbox.





12

## Sand & Paint

We sanded with an orbital sander, primed, and painted with an oil-based paint for maximum durability.





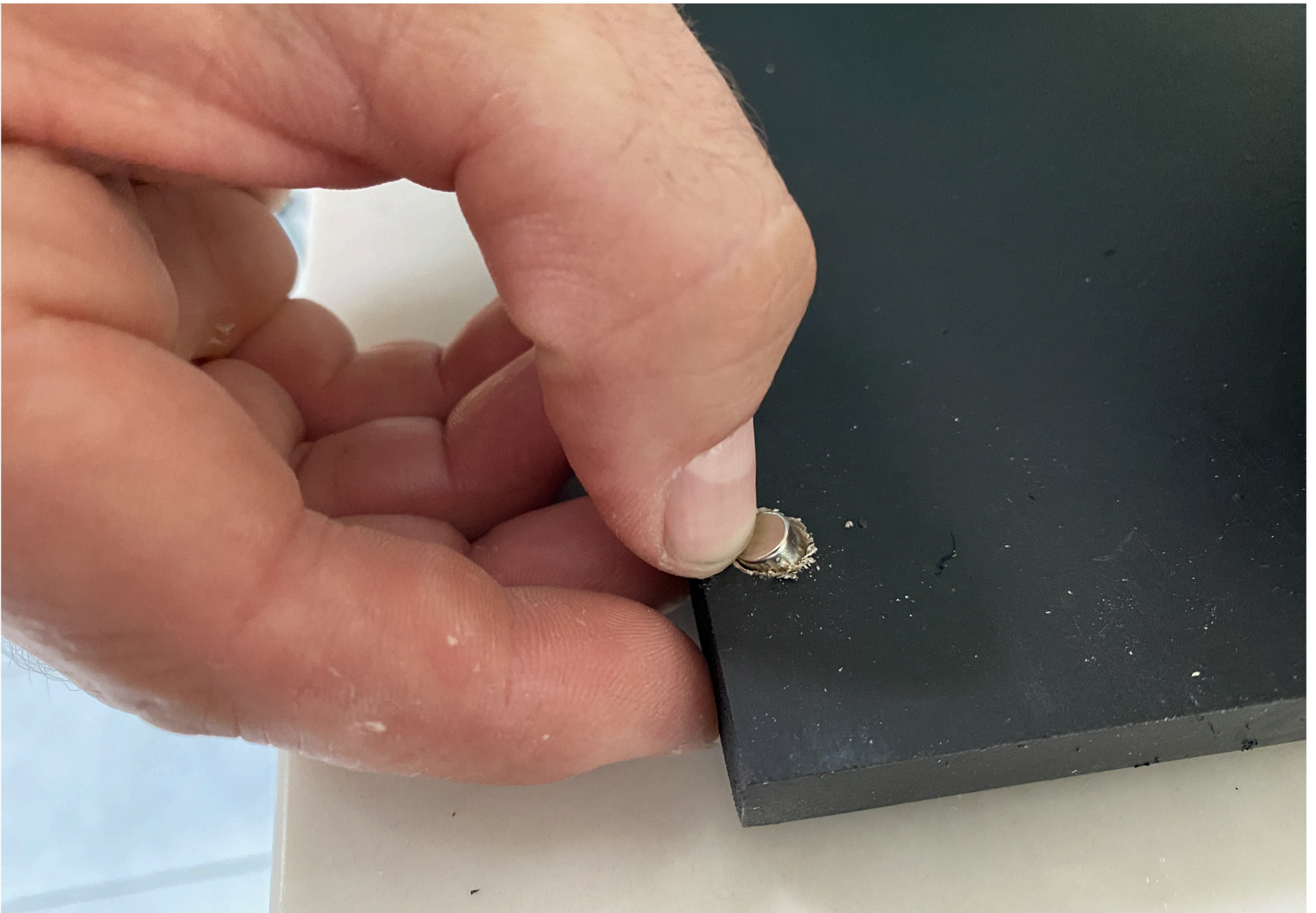
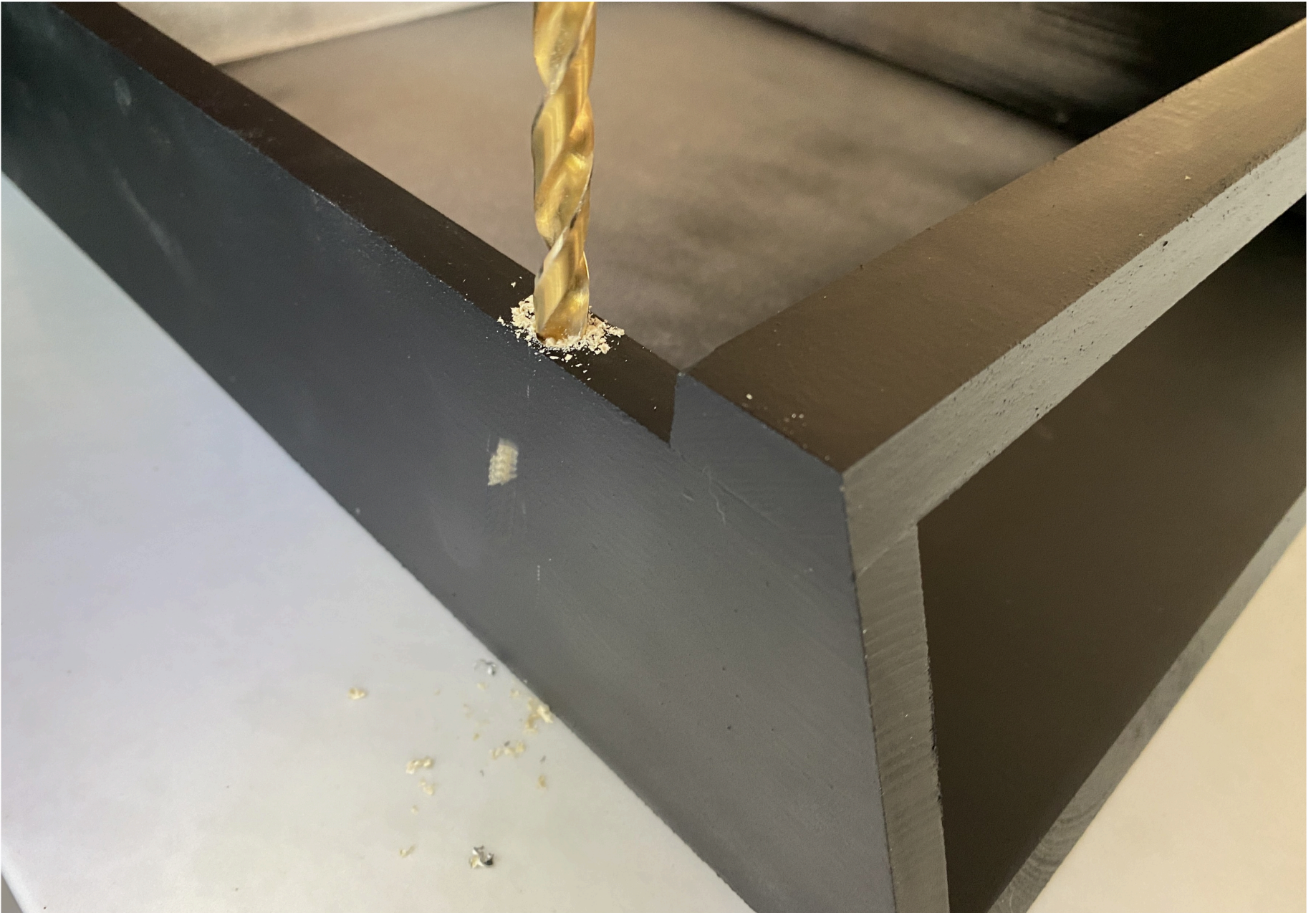
13

## Install Magnets

Drill holes for your rare earth magnets, and glue them in place.

---







14

## Assemble

Assemble mailbox!





15

**Reveal!**

Check out the final product!

