

# DIY Saw Blade Storage Box

By **Lemon Thistle**

Difficulty

Easy

A simple shelf/ box to store saw blades in- perfect for organizing the workshop. Acrylic dividers make it easy to find the blade you're looking for.



# Tools

## Kreg Tools

Accu-Cut™ [Accu-Cut™](#)

Kreg® Pocket-Hole Jig 720 [Kreg® Pocket-Hole Jig 720](#)

## Other Tools

Circular Saw (corded)

Square

Tape Measure

Drill (cordless)

Sander

Tape Measure

Utility Knife

# Materials

## Wood Products

**1** Plywood , 3/4" Thick , Half Sheet

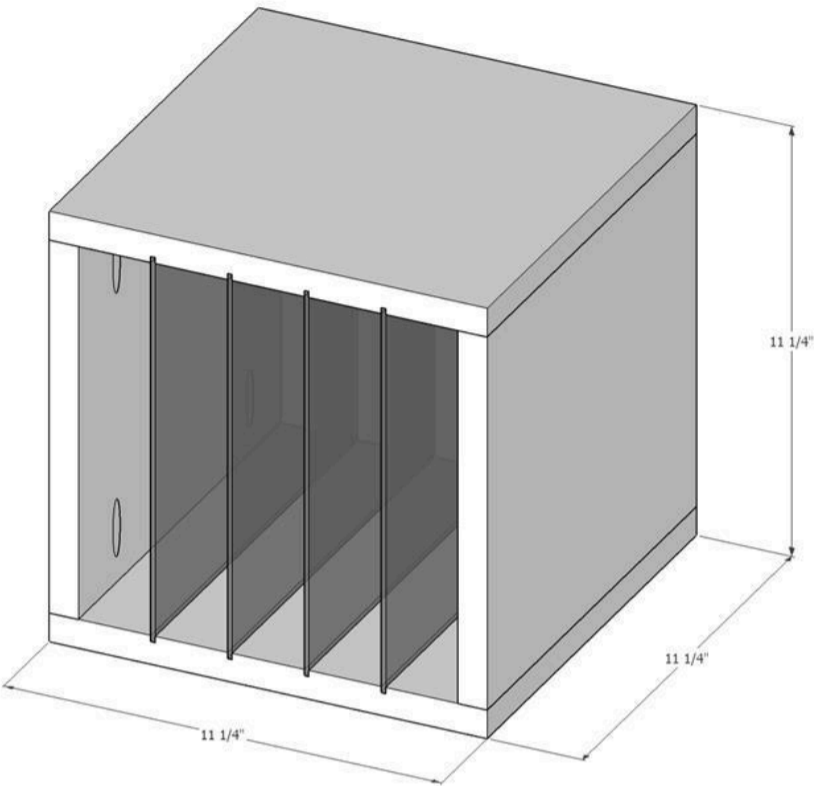
## Hardware & Supplies

**1** Sheet Acrylic

**8** Kreg Screws For Plywood

# Cut List & Parts

- 2 Top And Bottom , 13" X 11.5"
- 2 Sides , 11.5"x11.5"



# Directions

---

1

## Cut Plywood to Size

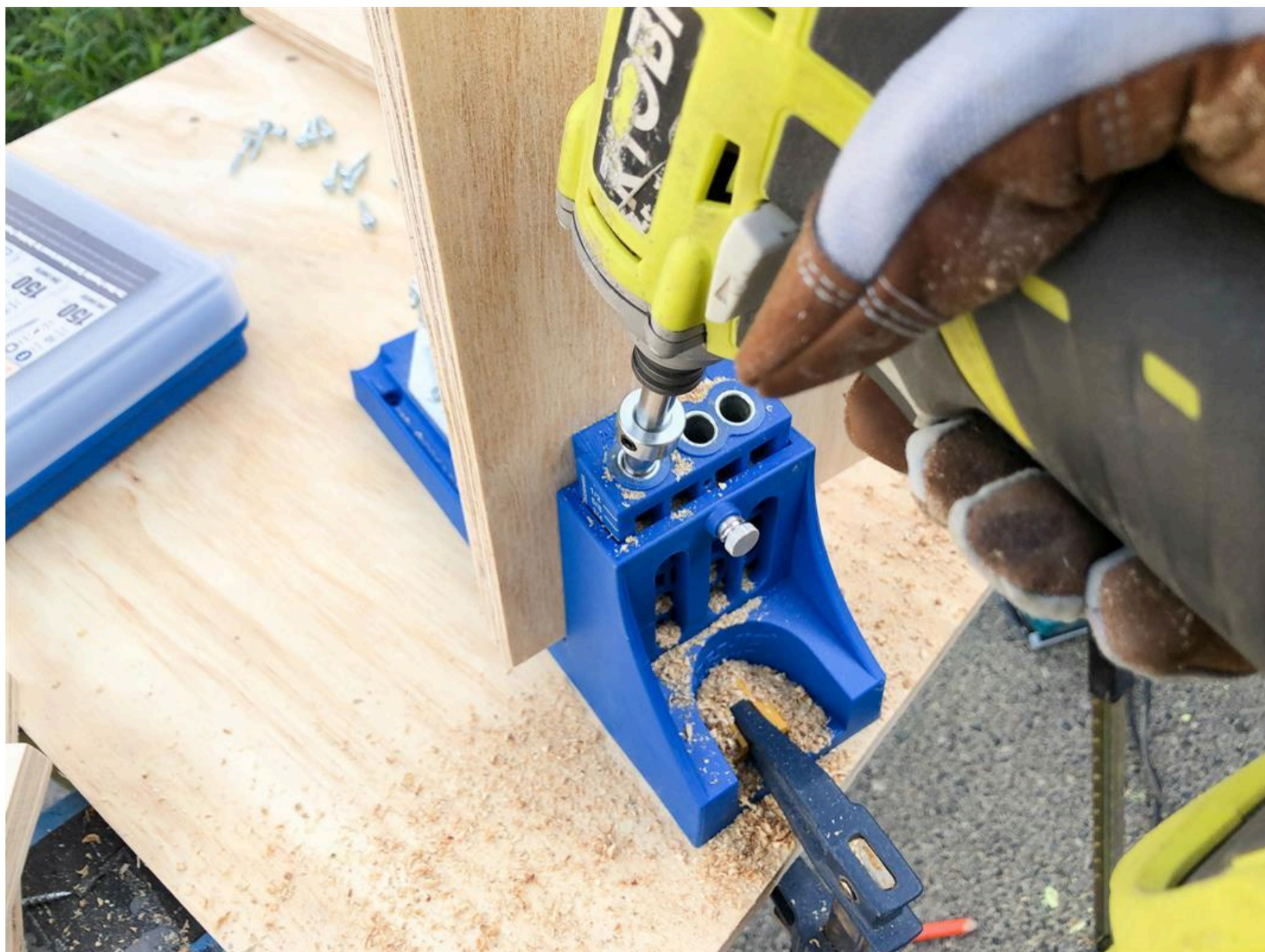
I used my Kreg Rip Cut to cut the 3/4" plywood to size. I sized mine for the largest type of saw blade we needed which meant 11 1/2" interior for us. I made it a perfect square, so had the top and bottom cut 1 1/2" longer. Sand if needed.



2

## Drill Pocket Holes

I drilled two pocket holes per side to connect the plywood box.



### 3

#### Cut Grooves for Dividers

You could use a plunge router for this. I used my skill saw on a shallow depth and my Kreg Rip Cut for a guide. I cut four grooves for dividers in the top and bottom pieces of plywood.

Optional- cut grooves for backing (I did this but then took it out. I preferred it without.



**4****Assemble Box**

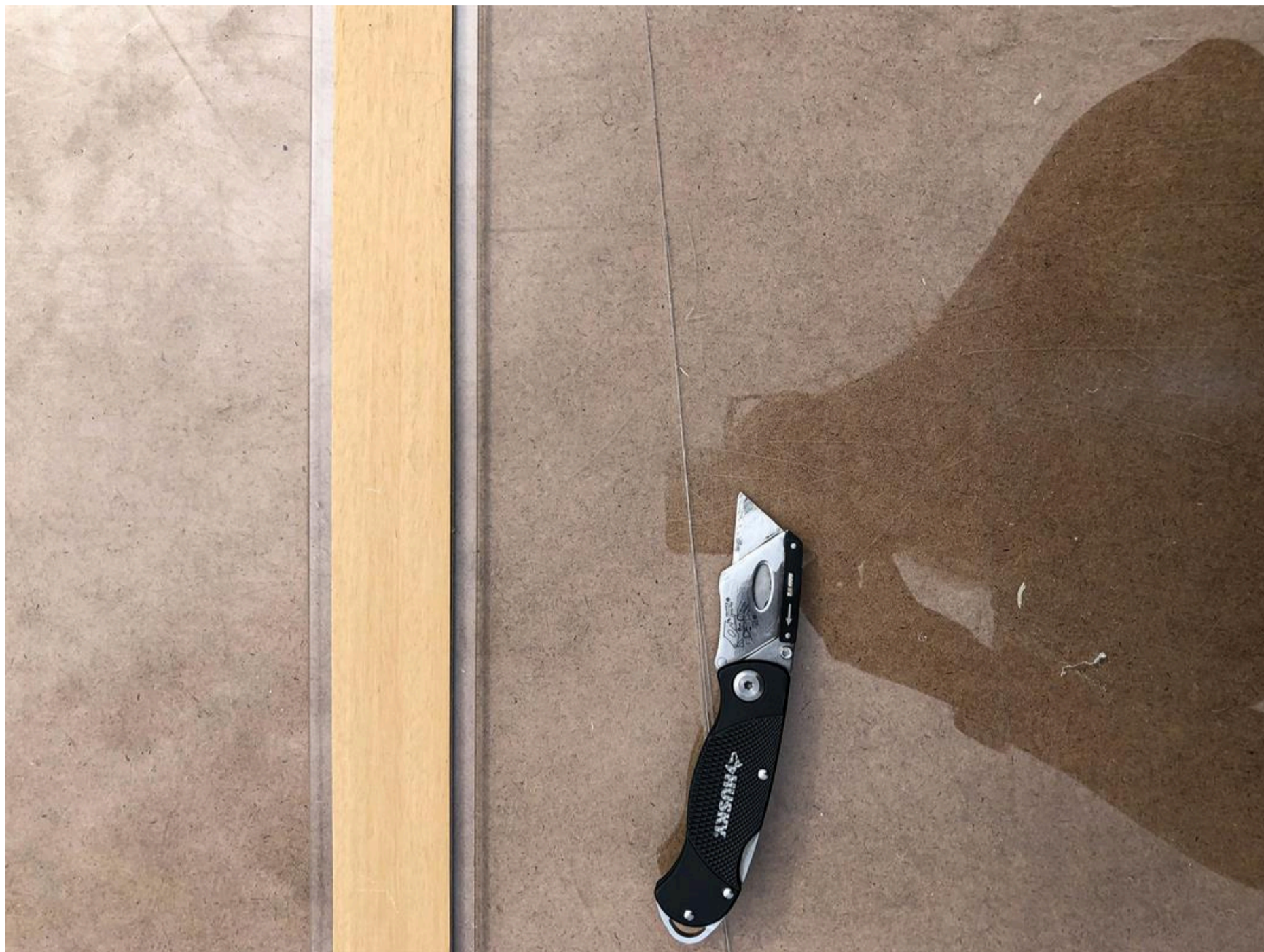
Assemble the box using pocket holes. Be sure to line up your grooves front to back so you will be able to slide in your dividers.



**5**

### Cut Acrylic Dividers

You could choose to route thicker grooves and use hardboard for your dividers. I used acrylic I had on hand. Cut acrylic by scoring with a utility knife and a straight edge (score a few times), then snapping it over the edge of a table.



**6****Slide in the Dividers**

Slide them in and it's ready to go! Sand down any rough edges showing using a fine grit sandpaper (I used 100)

