

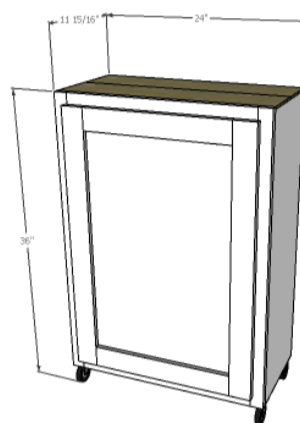
# Build a Rolling Storage Cabinet

By **Designs by Studio C**

Difficulty

Moderate

An easy to build cabinet on casters with a tile top, and a shelf behind the door. The cabinet is counter height and the perfect addition to a small space.



DESIGNS BY  
STUDIO C

DESIGNS BY  
STUDIO C

# Tools

## Kreg Tools

Kreg®  
Pocket-  
Hole Jig  
720

[Kreg® Pocket-Hole Jig 720](#)

## Other Tools

Miter Saw

Table Saw

Tape Measure

Nail Gun

Sander

# Materials

## Wood Products

- 2 Board , 1x2 , 96"
- 1 Board , 1x3 , 96"
- 2 Plywood , 1/4" Thick , Quarter Sheet
- 1 Plywood , 3/4" Thick , Half Sheet

## Hardware & Supplies

- 1 Box Of 1-1/4" Pocket Hole Screws
- 1 Box Of 1/2" Brad Nails
- 1 Box Of 1-1/2" Brad Nails
- 2 1/4" Overlay Hinges
- 4 3" Casters With 3/4" Screws
- 1 Wood Glue
- 1 Sandpaper (80, 120, 220 Grits)
- 2 Rectangular Wood Grain Ceramic Tiles

# Cut List & Parts

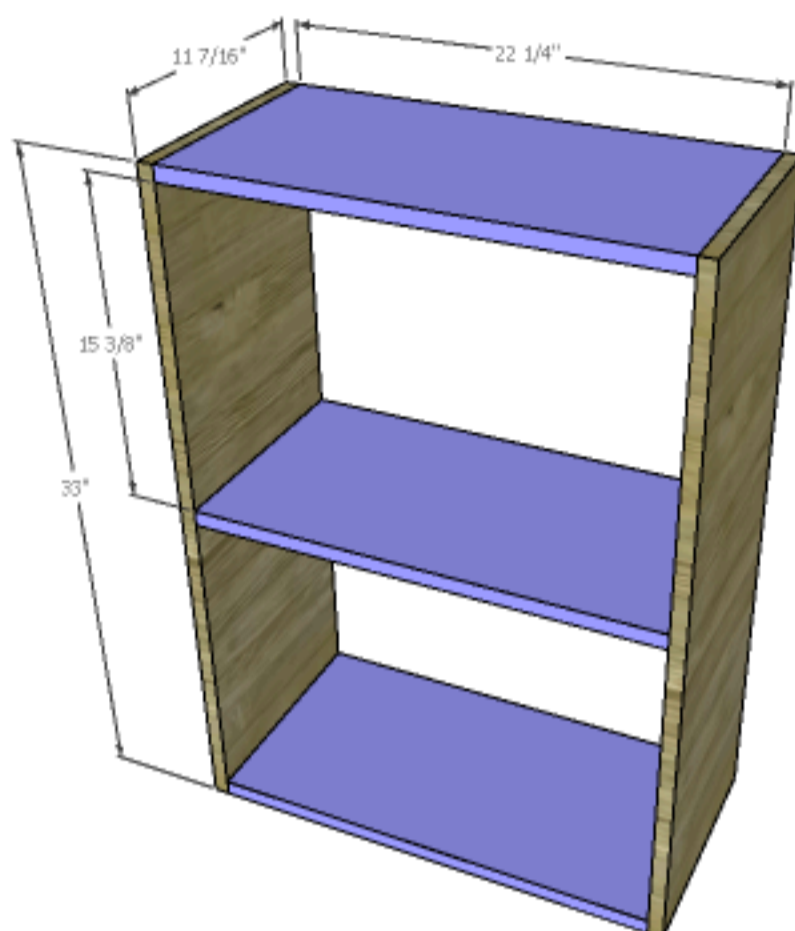
- 2 Case Sides , 3/4" Plywood At 11-7/16" X 33"
- 3 Case Top, Bottom & Shelves , 3/4" Plywood At 11-7/16" X 22-1/4"
- 2 Face Frame , 1x2 At 20-3/4"
- 2 Face Frame , 1x2 At 33-1/4"
- 1 Back , 1/4" Plywood At 23" X 32-1/4"
- 2 Door Frame , 1x3 At 16-1/4"
- 2 Door Frame , 1x3 At 30-3/4"
- 1 Door Panel , 1/4" Plywood At 16-3/4" X 26-1/4"

# Directions

1

## Step One

Cut the pieces for the sides, top and shelf. With the pocket hole jig set for  $\frac{3}{4}$ " material, drill pocket holes in each end of the top, bottom and shelf. Assemble the case using glue and  $1\frac{1}{4}$ " pocket hole screws.

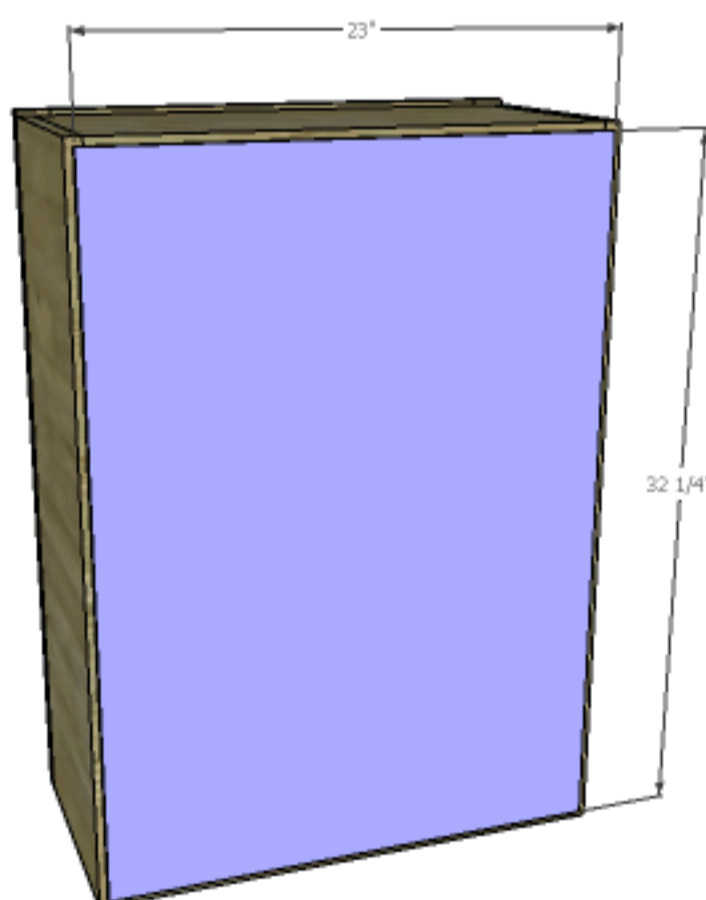


DESIGNS BY  
STUDIO C

2

## Step Two

Cut the piece for the back. Secure the back to the case using  $1\frac{1}{2}$ " brad nails.



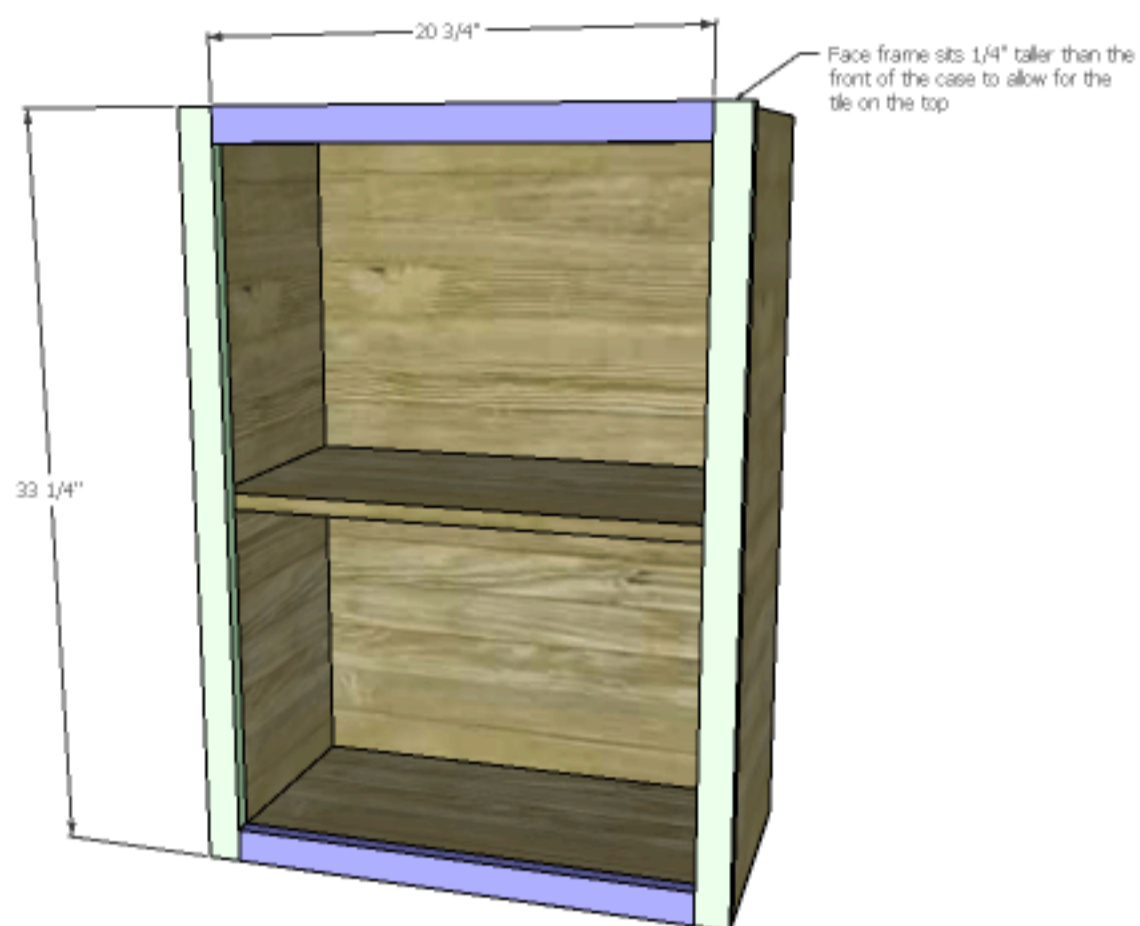
DESIGNS BY  
STUDIO C

## 3

**Step Three**

Cut the pieces for the face frame. Drill pocket holes in each end of the shorter pieces. Assemble the frame using glue and 1-1/4" pocket hole screws.

Position the face frame on the case with the sides and bottom flush. (Remember: the top of the face frame will sit 1/4" higher than the case to accommodate the tile.) Secure in place using glue and 1-1/2" brad nails.



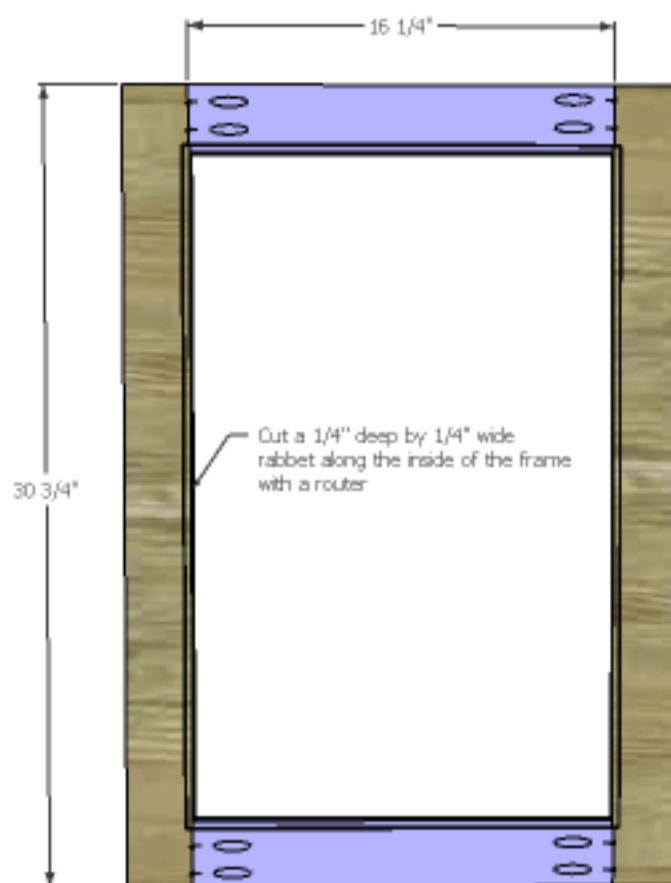
DESIGNS BY  
STUDIO C

## 4

**Step Four**

Cut the pieces for the door frame and drill pocket holes in each end of the shorter pieces. Assemble the frame using glue and 1-1/4" pocket hole screws.

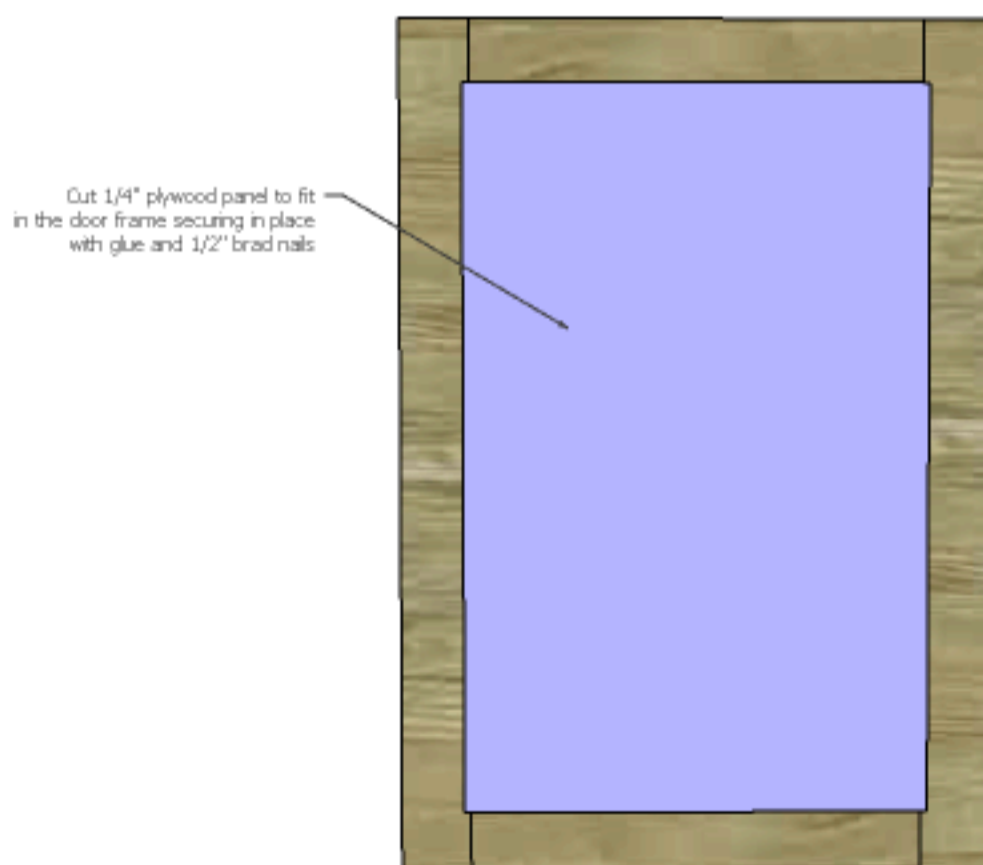
Using a router and a 1/4" rabbeting bit, cut a 1/4" deep rabbet along the inside back of the frame to accommodate the panel. Use a chisel to square the corners so the frame will fit (the corners of the panel can also be rounded.)

DESIGNS BY  
STUDIO C

## 5

**Step Five**

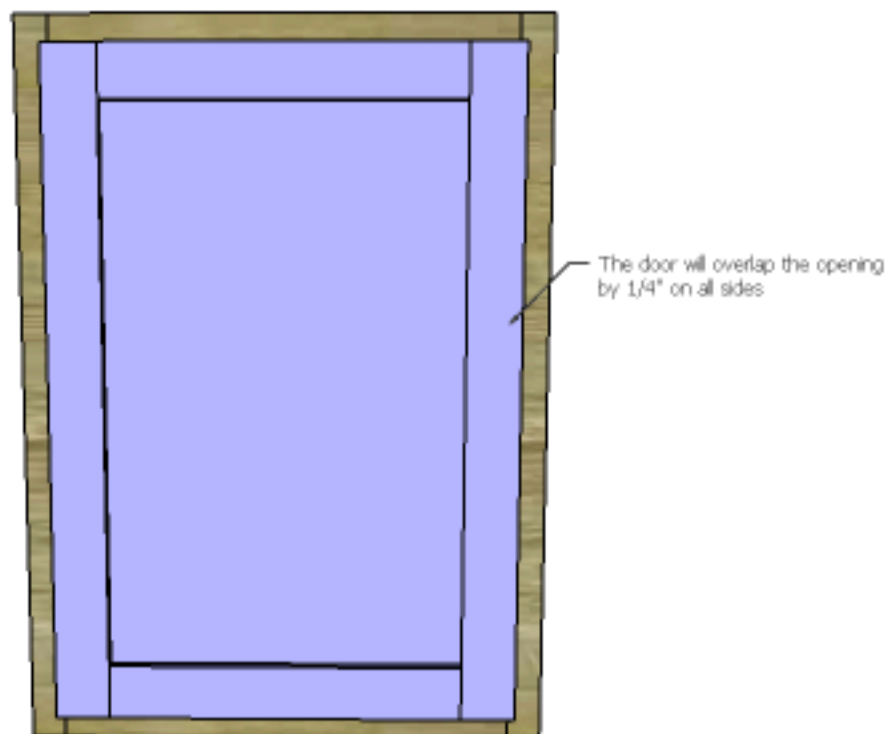
Cut the 1/4" panel to fit, then secure to the door frame using glue and 1/2" brad nails.

DESIGNS BY  
STUDIO C

6

### Step Six

Finish the cabinet as desired, then install the door following the manufacturer's installation instructions for the hinges. The door will overlap the opening by 1/4" on all sides.



DESIGNS BY  
STUDIO C

7

### Step Seven

The casters will be secured to the bottom of the case using 3/4" screws.



DESIGNS BY  
STUDIO C